

CABERNET — SENSATION



Builder: SENSATION

Year Built: 2006

Model: Motor Yacht

Price: PRICE ON APPLICATION

Location: United States

LOA: 147' (44.81mm)

Beam: 28.75

Min Draft: 6' 11" (2.11mm)

Cruise Speed: 16 Knots Kts. (18 MPH)

Max Speed: 19 Knots Kts. (22 MPH)

Our experienced yacht broker, Andrey Shestakov, will help you choose and buy a yacht that best suits your needs **CABERNET — SENSATION** from **our catalogue**. Presently, at **Shestakov Yacht Sales Inc.**, we have a wide variety of yachts available on **our sale's list**. We also work in close contact with all the big **yacht manufacturers** from all over the world.

If you would like to buy a yacht **CABERNET — SENSATION** or would like help answering any questions concerning purchasing, selling or chartering a yacht, please call **+1(954)274-4435**

TABLE OF CONTENTS

TABLE OF CONTENTS	2
SPECIFICATIONS	3
Overview	3
Basic Information	3
Dimensions	3
Speed, Capacities and Weight	4
Accommodations	4
Hull and Deck Information	4
Engine Information	4
PHOTOS	5
CONTACTS	17
Contact details	17
Telephones	17
Office hours	17
Address	17

SPECIFICATIONS

Overview

CABERNET is back on the market after a massive price reduction. CABERNET represents one of the best values on the market today and the owner has made it clear that he is ready to sell by approving a \$2MM USD price reduction.

CABERNET features a central glass elevator that services each deck allowing easy access from the lower guest accommodations all the way to the upper sundeck.

She has a private owner's deck located on the upper level with both a private lounge area, ensuite bath and completely private exterior deck only accessible from the cabin itself assuring complete privacy.

CABERNET sleeps 12 guests in 6 cabins with a large VIP and 4 spacious guests on the lower deck.

Crew accommodations are for 9 and include a captain's cabin located off of the wheelhouse.

7ft Bahama draft.

Basic Information

Category: Motor Yacht

Sub Category: Mega Yacht

Model Year: 2006

Year Built: 2006

Country: United States

Dimensions

LOA: 147' (44.81mm)

Beam: 28.75

Min Draft: 6' 11" (2.11mm)

Speed, Capacities and Weight

Cruise Speed: 16 Knots Kts. (18 MPH) **Cruise Speed Range:** 3500

Max Speed: 19 Knots Kts. (22 MPH) **Gross Tonnage:** 493 Pounds

Water Capacity: 2000 Gallons **Holding Tank:** 900 Gal Gallons

Fuel Capacity: 17000 Gal Gallons

Accommodations

Total Cabins: 6

Total Berths: 6

Sleeps: 12

Total Heads: 8

Crew Cabin: 9

Crew Berths: 9

Crew Heads: 5

Hull and Deck Information

Hull Material: Fiberglass

Deck Material: Teak over Fiberglass

Hull Configuration: Semi-Displacement **Exterior Designer:** Evan K Marshall

Interior Designer: Evan K Marshall

Engine Information

Engines: 2

Manufacturer: Caterpillar

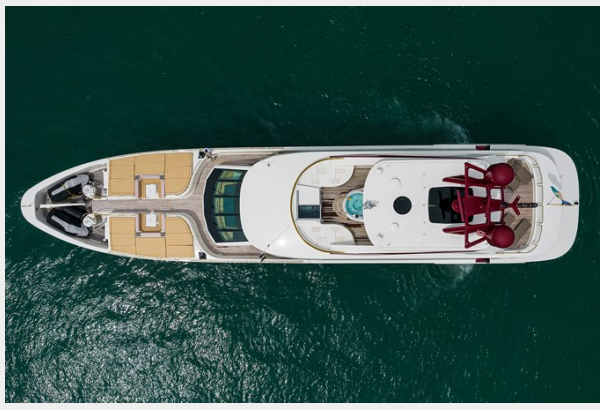
Engine Type: Inboard

Fuel Type: Diesel

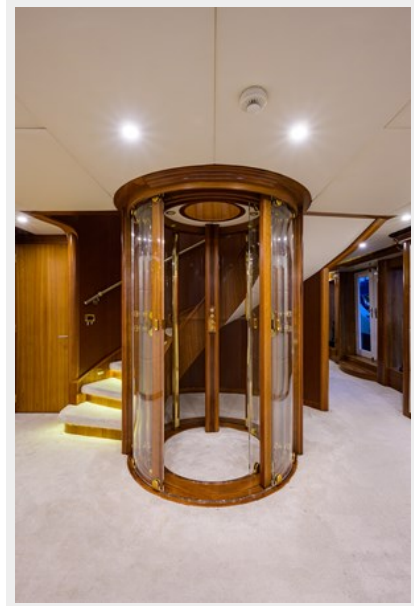
PHOTOS



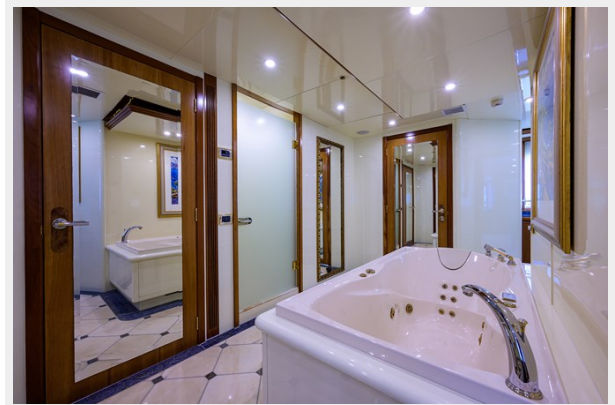


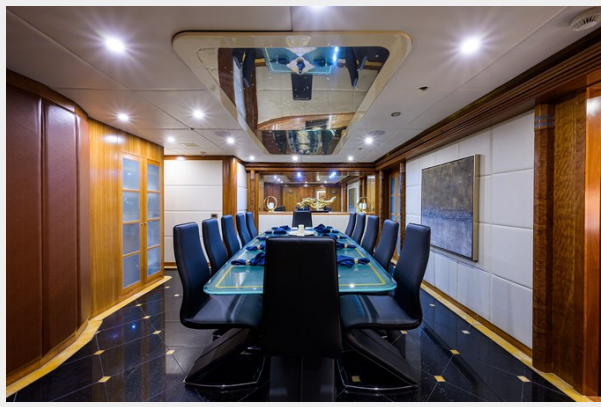






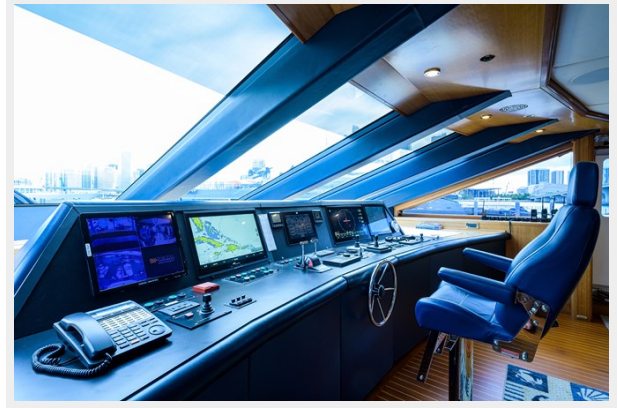














CONTACTS

Andrey Shestakov, leading yacht broker of the sales department of Shestakov Yacht Sales Inc. Shestakov Yacht Sales Inc., the official representative of the Miami/Fort Lauderdale FL headquarters.

Contact details

Email: **andrey@shestakovyachtsales.com**

Web: shestakovyachtsales.com/en/

Telephones

USA: **+1(954)274-4435**

Office hours

Monday – Saturday: **9:00 - 21:00** EDT

Sunday: **closed**

Address



Harbour Towne Marina, 850 NE 3rd St, STE 213, Dania, FL 33004