

RIVENDELL — C & C YACHTS



Builder: C & C Yachts

LOA: 35' 0" (10.67m)

Year Built: 1987

Max Draft: 6' 6" (1.98m)

Model: Cruising Sailboat

Price: PRICE ON APPLICATION

Location: United States

Our experienced yacht broker, Andrey Shestakov, will help you choose and buy a yacht that best suits your needs **RIVENDELL — C & C Yachts** from our catalogue. Presently, at Shestakov Yacht Sales Inc., we have a wide variety of yachts available on our sale's list. We also work in close contact with all the big yacht manufacturers from all over the world.

If you would like to buy a yacht **RIVENDELL — C & C Yachts** or would like help answering any questions concerning purchasing, selling or chartering a yacht, please call **+1(954)274-4435**

TABLE OF CONTENTS

TABLE OF CONTENTS	2
SPECIFICATIONS	3
Overview	3
Basic Information	4
Dimensions	5
Speed, Capacities and Weight	5
Accommodations	5
Hull and Deck Information	5
Engine Information	5
PHOTOS	6
CONTACTS	12
Contact details	12
Telephones	12
Office hours	12
Address	12

SPECIFICATIONS

Overview

"Rivendell" is a rare example of Steve Killing's work post-involvement with C&C. She is sleek and beautiful, and outfitted with all of gear necessary to hop aboard and go cruising today. 2018 Survey Available! Import duty paid! She has the lines of a C&C and a substantially beefed-up build. Her loving owners have taken exceptional care of her, but their cruising days are over and they are ready to pass this special boat along to a new owner.

Here's an extensive timeline of what her owners have done and added:

2017 >> Replaced: >> . Foresail halyard from wire and rope to all rope >> . New hardware for boom vang by "Garhauer" and new line >> . New line for preventer >> . New spinnaker halyard >> . New lines for traveler >> . New towline for dinghy >> . New block by "Garhauer" on pulpit for furling line >> . Refurbished wind generator >> . Refurbished water maker >> . Refurbished Electrasan (waste disposal/purification) by "Raritan" >> . New Y valve and plumbing for toilet >> . New chip for chart plotter >> . New leather on steering wheel >> . Upper third portion of mast stripped and repainted >> 2016 >> . Stripped and painted supports for wind generator >> . Stripped and painted housing for water maker pump >> . New compressor for fridge >> . Corion covers for sink refinished >> . Additional lighting installed in v-berth, quarter berth and cabin. >> . Reconditioned hydraulic backstay >> 2015 >> . Replaced sailing instruments >> . Replaced chart plotter "Standard Horizon" >> . Engine moved and realigned "Holland Marine" >> . Installed new "Harkin" furler >> . Replaced batteries 6 volt golfcart >> . Refurbished Max Prop >> . Refurbished stuffing box >> . Replaced alternator >> . Installed "MacPack" for mainsail >> 2014 >> . Replaced stove "Force Ten" >> . Sunscreen side panels for cockpit (Velcro attachment) >> . All lighting replaced with LED >> . Replaced auto-pilot control head >> 2013 >> . Engine overhauled...new injectors and high pressure pump >> . Stainless steel bow protector installed >> . New Main halyard >> . New custom closet storage unit in quarter berth >> . New "Standard Horizon" Matrix GX 2000 radio >> 2012 >> . Installed new windless by "Lewmar" >> . Installed radar >> 2008 >> . Installed 120amp high output alternator >> . Installed Watermaker by "SK" >> . Installed 1500 watt inverter >> . Replaced old cars with adjustable Genoa cars by "Garhauer" >> 2007 >> . New sails — cruising blue water, cross cut , 7 ounce "Bainbridge Dacron" >> . Water filters installed in galley >> . Installed additional cooling fan for fridge compressor >> . Installed additional lighting above seating in salon >> 2006 >> . Mast and boom stripped and repainted >> . Installed Canvas enclosure >> . Replaced Lexan in both hatches >> . Installed solar vent in aft hatch >> . Recauked all cabin sidelights (windows) >> . Replaced cockpit cushions >> . Replaced toilet >> . Replaced all black water sewage hoses >> . Installed 1500 watt inverter >> 2005 >> . Installed Custom Stainless steel frame for galley >> . Installed Davits "Garhauer"..heavy-duty

>> 2004 >> . Installed "RayMarine" wheel auto pilot >> . Replaced all wiring on boat >> .

Installed Speakers in cockpit, v-berth and quarter birth >> . Installed Shower attachment in rear lazarette >> . Reupholstered salon cushions >> . Replaced foam in mattress v-berth added memory foam topper >> . Installed “Garboard” bilge drain >> 2003 >> . Wood interior throughout stripped and refinished (polyurethane and paint) >> . Cockpit floor boards stripped and refinished with epoxy and polyurethane >> . Replacement of fabric on liners in cabin and v-berth >> . New curtains “sunscreens” for side lights >> . Stainless steel panels installed under cabinet and on wall in galley >> . Installed extra light in galley
 Specs Keel: Fin Dimensions LOA: 35 ft 0 in Beam: 11 ft 6 in LWL: 29 ft 0 in Maximum Draft: 6 ft 6 in Displacement: 11500 lbs Ballast: 5300 lbs Engines Engine 1: Engine Brand: Yanmar Year Built: 1987 Engine Model: 3GM30F Engine/Fuel Type: Diesel Engine Hours: 2542 Engine Power: 29 HP Tanks Fresh Water Tanks: 40 Plastic Fuel Tanks: 32 Aluminum Accommodations Number of single berths: 2 Number of double berths: 2 Number of cabins: 2 Number of heads: 1 Electronics VHF Plotter Autopilot Wind speed and direction GPS Navigation center Depthsounder Log-speedometer Radar Compass Sails Fully battened mainsail Furling genoa Rigging Steering wheel Inside Equipment Refrigerator Deep freezer Manual bilge pump Hot water Electric bilge pump Fresh water maker Heating Chemical head Battery charger Oven Marine head Air conditioning Electrical Equipment Inverter Shore power inlet Generator Outside Equipment/Extras Solar panel Cockpit cushions Cockpit table Cockpit shower Swimming ladder Davits Wind generator Electric windlass Covers Bimini Top Lazy bag

Accommodations

This boat has been amazingly well-maintained. Everything sparkles! Upon entering through the companionway, you will notice the fine joinery and detail of this vessel. The galley is to port and large nav station is to starboard. The head, which is surprisingly large for a boat of this size, is located aft of the nav station, and a large private stateroom with a double berth lies aft of the galley to port.

The salon is spacious enough to host a large dinner party (will comfortably seat 6), and the v-berth is roomy as well, with lots of storage.

Basic Information

Category: Cruising Sailboat

Sub Category: Cruising Sailboat

Model Year: 1987

Year Built: 1987

Country: United States

Dimensions

LOA: 35' 0" (10.67m)

LWL: 29' 0" (8.84m)

Max Draft: 6' 6" (1.98m)

Speed, Capacities and Weight

Displacement: 11500 Pounds

Water Capacity: 40 Gallons

Fuel Capacity: 32 Gallons

Accommodations

Total Cabins: 2

Hull and Deck Information

Hull Material: Fiberglass

Engine Information

Engines: 1

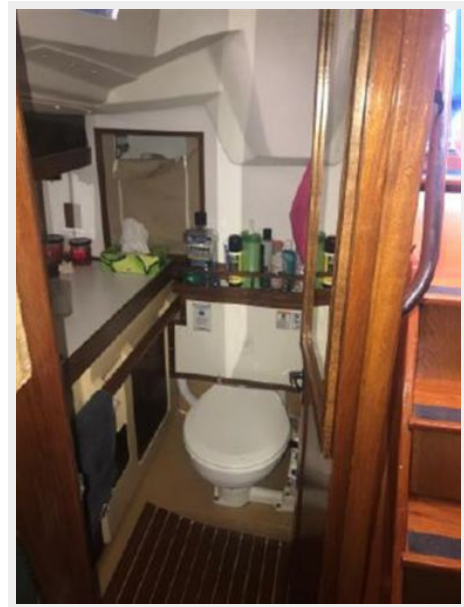
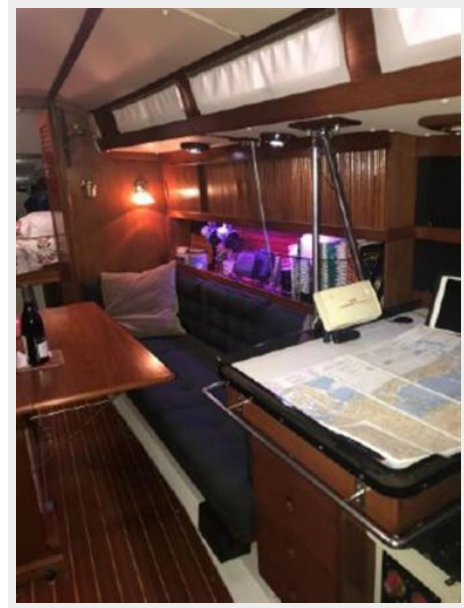
Manufacturer: Yanmar

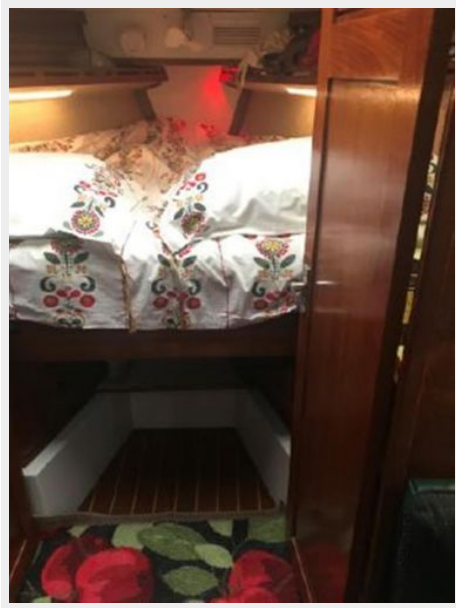
Model: 3GM30F

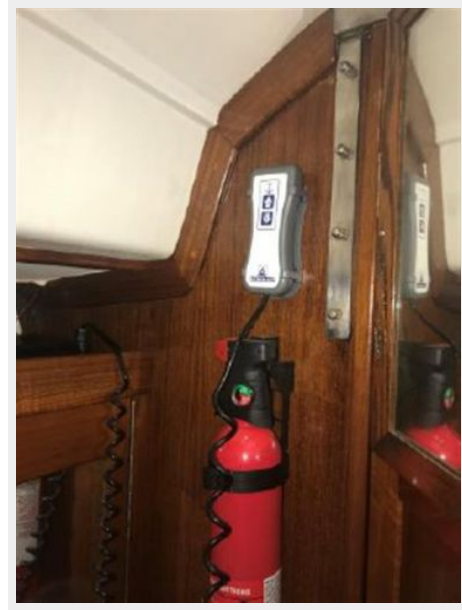
Engine Type: Inboard

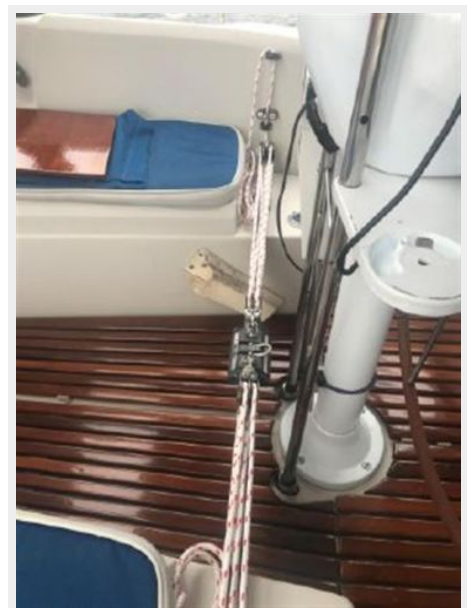
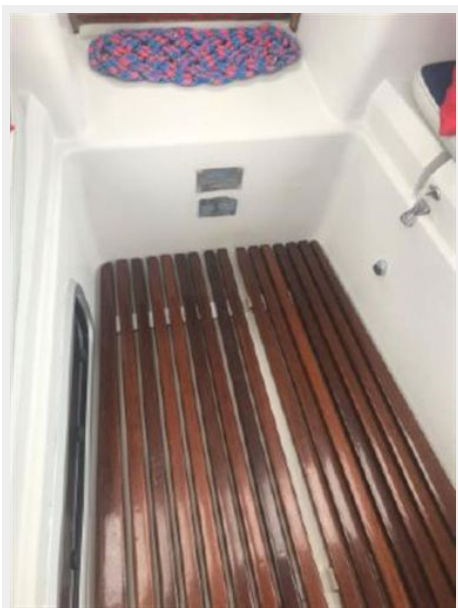
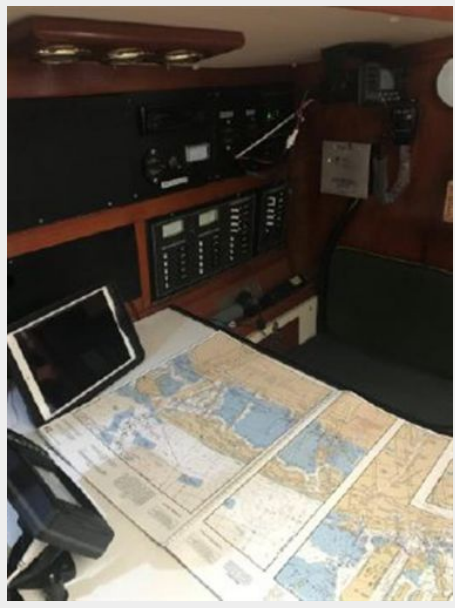
Fuel Type: Diesel

PHOTOS













CONTACTS

Andrey Shestakov, leading yacht broker of the sales department of Shestakov Yacht Sales Inc. Shestakov Yacht Sales Inc., the official representative of the Miami/Fort Lauderdale FL headquarters.

Contact details

Email: andrey@shestakovyachtsales.com

Web: shestakovyachtsales.com/en/

Telephones

USA: +1(954)274-4435

Office hours

Monday – Saturday: **9:00 - 21:00** EDT

Sunday: **closed**

Address



Harbour Towne Marina, 850 NE 3rd St,
STE 213, Dania, FL 33004