

NAVALIS — BENETEAU



Builder: BENETEAU

Year Built: 2006

Model: Cruising/Racing Sailboat

Price: PRICE ON APPLICATION

Location: United States

LOA: 47' 0" (14.33m)

Beam: 14' 2" (4.32m)

Min Draft: 6' 9" (2.06m)

Our experienced yacht broker, Andrey Shestakov, will help you choose and buy a yacht that best suits your needs **Navalis — BENETEAU** from our catalogue. Presently, at Shestakov Yacht Sales Inc., we have a wide variety of yachts available on our sale's list. We also work in close contact with all the big yacht manufacturers from all over the world.

If you would like to buy a yacht **Navalis — BENETEAU** or would like help answering any questions concerning purchasing, selling or chartering a yacht, please call **+1(954)274-4435**

TABLE OF CONTENTS

TABLE OF CONTENTS	2
SPECIFICATIONS	3
Overview	3
Basic Information	3
Dimensions	3
Speed, Capacities and Weight	3
Accommodations	3
Hull and Deck Information	4
Engine Information	4
DETAILED INFORMATION	5
Accommodations & Layout	5
Galley and Dinette	5
Sails & Rigging	5
Mechanical	6
Electrical	6
Electronics/Navigation Equipment	7
Deck Equipment	7
Disclaimer	8
Exclusions	8
Disclaimer	8
PHOTOS	9
CONTACTS	16
Contact details	16
Telephones	16
Office hours	16
Address	16

SPECIFICATIONS

Overview

4 stateroom, 3 head layout. Large salon and mid ship galley. Centerline master berth forward, twin bunk room and 2 double cabins aft. Roomy cockpit! Great sailing vessel with a 6'9" draft and a keel stepped mast. 63' bridge clearance. Newer Mainsail, new cutlass bearing 2018, new rudder bushing 2018. Being sold at an excellent price with the opportunity to customize to your specifications. This is not a hurricane damaged vessel.

Basic Information

Category: Cruising/Racing Sailboat

Sub Category: Sloop

Model Year: 2006

Year Built: 2006

Country: United States

Dimensions

LOA: 47' 0" (14.33m)

LWL: 43' 10" (13.36m)

Beam: 14' 2" (4.32m)

Min Draft: 6' 9" (2.06m)

MFG Length: 46' 11" (14.30m)

Speed, Capacities and Weight

Displacement: 24277 Pounds

Water Capacity: 222 Gallons

Fuel Capacity: 57 Gallons

Accommodations

Total Cabins: 4

Sleeps: 8

Total Heads: 3

Hull and Deck Information

Hull Material: Fiberglass

Hull Designer: Groupe Finot

Engine Information

Engines: 1

Manufacturer: Yanmar

Model: 4JH3-TE

Fuel Type: Diesel

DETAILED INFORMATION

Accommodations & Layout

- As you walk down the companionway entry you find a spacious salon with an L shaped upholstered settee to starboard with a teak dining table and built in double bench seat on opposite side of table. Large enough for your entire family and guests.
- There is a long midship galley on the port side.
- The forward facing Navigation desk is to starboard.
- Going forward is a centerline double cabin and an over-under bunk room to starboard with the head and shower opposite.
- Each of the double cabins aft have a head and shower.
- Plenty of natural light and ventilation
- 9 opening hatches with shades and opening ports
- 3 fixed skylights
- Sliding companionway hatch with Lexan hatch boards
- Easy to maintain laminate cabin sole
- White vinyl headliner with teak battens
- Upholstered L shaped settee and midship loveseat
- custom sheets and blankets
- Decor items excluded

Galley and Dinette

- Top loading Refrigerator, engine driven
- Top loading Freezer, engine driven
- Dual SS sinks
- Built in sink drain
- Pressure water system
- 222 gallon water capacity
- Salt water foot pump
- 3 burner Force 10 propane oven, needs replacement
- 2 LPG tanks Trident gas shutoff
- Cabinets and drawer storage
- Set of Dishes

Sails & Rigging

- Newer Mainsail with Stack Pack and Lazy Jacks - good condition
- 5 full battens on Main
- Profurl roller furling unit

- Genoa
- Z Spar Aluminum mast and boom
- Boom vang
- Spinnaker pole
- Lewmar sail track
- Harken blocks
- Lewmar cam cleats
- Deck stepped mast
- SS wire standing rigging
- Slab reefing on mainsail
- (2) #53Harken ST Primary winches
- (2) #40 Harken St winches

Mechanical

- Yanmar 4JH3-TE 73hp diesel engine, 6400 hours
- Direct drive transmission
- SS shaft
- Stuffing box
- 3 bladed prop
- New Cutlass bearing (2018)
- New Rudder bushing (2018)
- Dual helm wheels
- (2) Rule Electric bilge pumps w/ float switch
- Whale manual bilge pump
- 11 gallon Hot water heater, engine driven
- (3) Jabsco manual heads
- 40 gal holding tank
- Jabsco macerator
- Y valves
- Shower sump
- Fresh water pump

Electrical

- Lifeline AGM batteries, 2 8D house bank 135 amp hrs ea1 Group 27 start battery 90 amp hrs
- 3 Rotary selector switches
- Xantrex battery charger
- Hitachi 80 Amp Alternator
- AC system converted from 220 to 120
- (1) Marinco 125V , 30 amp inlet

- Newer US electric panel with (1) 125V outlet
- 12V DC12V fans
- Shore power cord
- Guest Dynaplate grounding plates

Electronics/Navigation Equipment

- Raymarine A50D Chartplotter
- Raymarine ST6001+ Autopilot
- Raymarine 54 DSC VHF Radio
- ST60 displays, wind, speed, depth
- 2 Compass - lenses fogged
- Electronics are dated, screens sun damaged
- Uniden handheld VHF
- Sony Stereo
- 4 Speakers
- Platismo Barometer
- Platismo Clock
- Ships Bell

Deck Equipment

- Anchor roller
- Anchor locker
- Delta Anchor, chain and rode
- 2nd anchor
- Lofrans Tigress electric windlass with wired remote
- Transocean 6 person Liferaft in hard case - needs recertification
- Swim platform and walk thru transom with door
- Teak inlay on transom
- SS Swim ladder
- Transom shower
- Deep cockpit lazarette storage
- Dual helm stations
- Long bench seating with teak inlay
- Cockpit cushion seats
- Cockpit table with drop leafs
- SS bimini frame, canvas needs renewal
- Non skid decks
- Teak toe rails
- Teak grab rails on foredeck
- SS stanchions and double lifelines, side gates

- 8 PFD's
- Harness, hook ons, jacklines
- (2) Horseshoe buoys
- (10) fenders
- (6) dock lines
- Outboard mount

Disclaimer

The Company offers the details of this vessel in good faith but cannot guarantee or warrant the accuracy of this information nor warrant the condition of the vessel. A buyer should instruct his agents, or his surveyors, to investigate such details as the buyer desires validated. This vessel is offered subject to prior sale, price change, or withdrawal without notice.

Exclusions

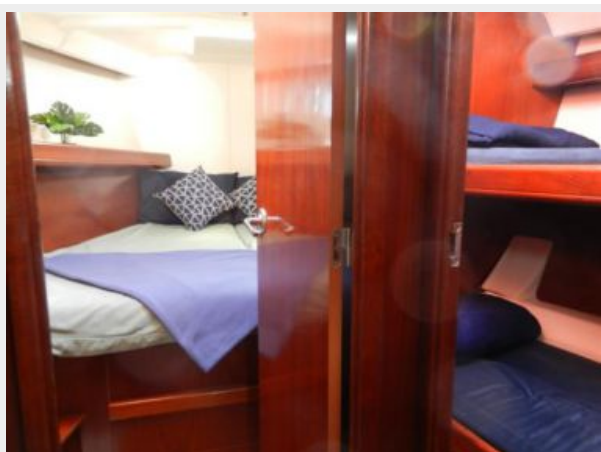
Owner's personal belongings.

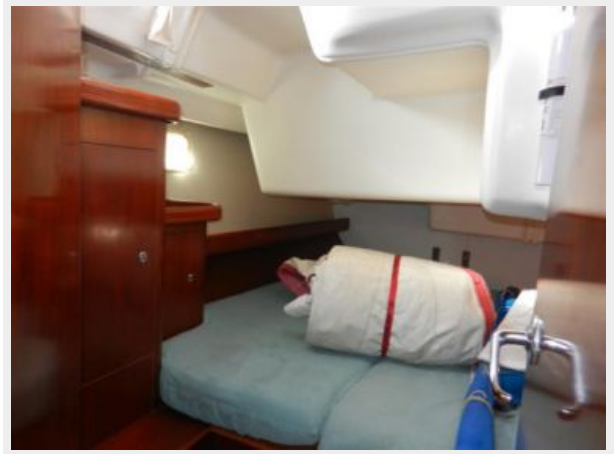
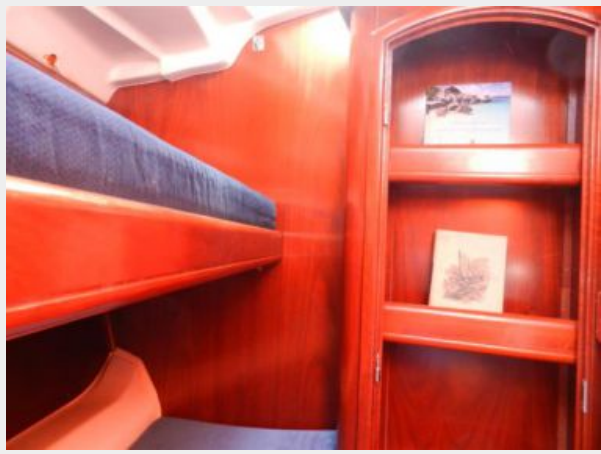
Disclaimer

The Company offers the details of this vessel or yacht in good faith but cannot guarantee or warrant the accuracy of this information nor warrant the condition of the vessel. A buyer should instruct his representatives, agents, or his surveyors, to investigate such details as the buyer desires validated. This vessel or yacht is offered subject to prior sale, price change, or withdrawal without notice.

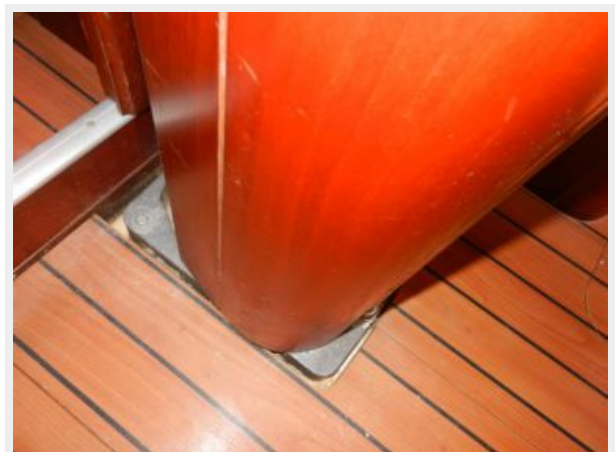
PHOTOS

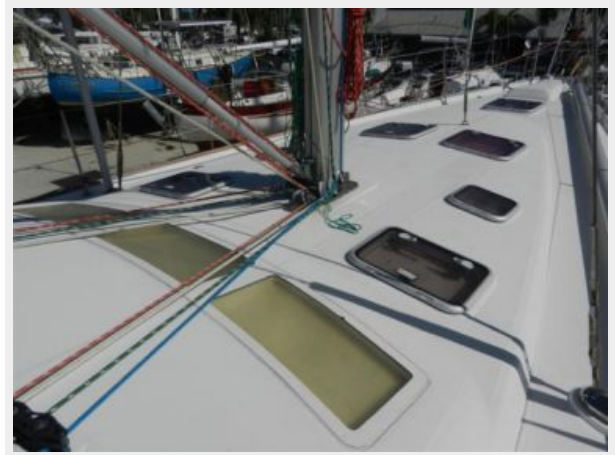
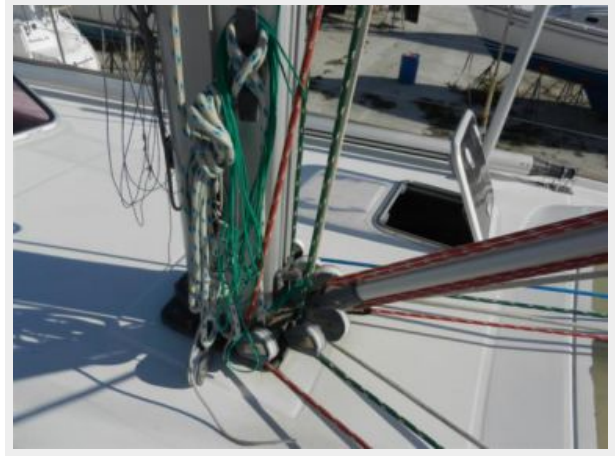
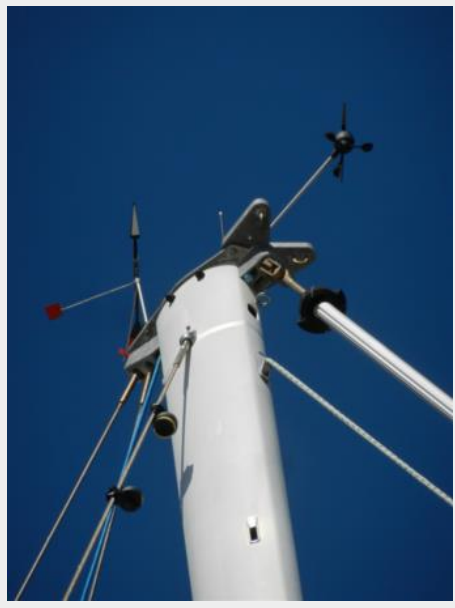














CONTACTS

Andrey Shestakov, leading yacht broker of the sales department of Shestakov Yacht Sales Inc. Shestakov Yacht Sales Inc., the official representative of the Miami/Fort Lauderdale FL headquarters.

Contact details

Email: andrey@shestakovyachtsales.com

Web: shestakovyachtsales.com/en/

Telephones

USA: +1(954)274-4435

Office hours

Monday – Saturday: **9:00 - 21:00** EDT

Sunday: **closed**

Address



Harbour Towne Marina, 850 NE 3rd St,
STE 213, Dania, FL 33004