

MY WORLD — BENETEAU



Builder: BENETEAU

LOA: 51' (15.54m)

Our experienced yacht broker, Andrey Shestakov, will help you choose and buy a yacht that best suits your needs **My World — BENETEAU** from our catalogue. Presently, at Shestakov Yacht Sales Inc., we have a wide variety of yachts available on our sale's list. We also work in close contact with all the big yacht manufacturers from all over the world.

If you would like to buy a yacht **My World — BENETEAU** or would like help answering any questions concerning purchasing, selling or chartering a yacht, please call **+1(954)274-4435**

TABLE OF CONTENTS

TABLE OF CONTENTS	2
SPECIFICATIONS	3
Overview	3
Basic Information	6
Dimensions	6
Speed, Capacities and Weight	6
Accommodations	7
Hull and Deck Information	7
Engine Information	7
PHOTOS	8
CONTACTS	12
Contact details	12
Telephones	12
Office hours	12
Address	12

SPECIFICATIONS

Overview

Ready to live the dream?

Or are you looking for affordable housing in the Florida Keys?

This German Frers designed hull, 3+ cabin, 3 head sailboat, is for you.

She survived Hurricane Irma without a scratch.

She boasts 200 gallons freshwater storage, 2x 60 gallons diesel tanks, solar, wind, 85hp Perkins engine, plus loads of extras including Garmin electronics.

11.5' dinghy, with 20hp motor and spare 8hp motor included.

MyWorld is ready to take you on your next adventure or let you relax in comfort in Marathon or wherever you'd like to settle.

Possibilities are limitless.

More about Beneteau IDYLLE 15.5

Beneteau's Idylle series are **not** the inexpensive plastic boats.

Beneteau produced the German Frers designed 51 from 1985 to 1987.

The 51 Idylle is a Frers designed boat, and Frers always pens fast yachts.

The 51 has an raked bow, classic sheer, and flat stern.

Her toerail is the perforated aluminum and the trunk cabin is low and racy with the well aft cockpit. Underneath she has a deep, 6'6" fin keel and spade rudder.

The propeller is half way between the rudder and keel. She looks sexy underway with her sharp, low cutting profile.

These Beneteaus were built in France. The deck has a 2 inch balsa core.

You have 360 degree, unhindered access to the **85 HP Perkins** that comes standard.

Beneteau Idylle 51 is an excellent long distance cruiser.

Good lay-out with three cabins and a fourth crew cabin, now in use as storage.

Please contact for a showing, thank you. Boat Name MyWorld Specs Builder: Beneteau Designer: German Frers Flag of Registry: United States Keel: Fin

Dimensions

- Beam, 15ft
- Draft 6,5ft
- Bridge Clearance, 64 1/2
- Length Overall, 54ft
- Length. 51ft

Sailing and Rigging Gear:

- **Main Sail**
- **Head Sails**
- **Genoa**
- **Standing rigging age? Replaced upper shroud 2017, rest serviced**
- **Running rigging operational**
- **Winches**
- **Boom Vang**
- **Reefing**
- **Roller Furling**
- **Mast Material: Aluminum**
- **Type of Backstay: 1/2 in.stainless**
- **Sail Covers**

Accommodations:

- **AC**
- **Dinette, converts to bed**
- **Heads 3x**
- **Shower**
- **Transom Shower**
- **Sinks, 2x double**
- **Fridge**
- **Oven**
- **Stove, 3 burner**
- **Sleeping Capacity 10**
- **Cabins, 3+**
- **Berths, 7 + salon converts to bed**

Deck Gear:

- **Anchor, 2x**

- **Bimini**
- **Coolers, in cockpit**
- **Dinghy Davits / Lift**
- **Fenders**
- **BBQ Grill**
- **Mooring Lines**
- **Rodholders, 2x**
- **Swim Ladder**
- **Washdown, fresh**
- **Windlass**

Safety Equipment:

- **Alarm**
- **Bilge Pump**
- **Fire Extinguisher**
- **Fume / Gas Detector**
- **Grab Rails**
- **Horn**
- **Life Jackets**

Navigation Equipment:

- **GPS**
- **VHF**
- **Compass**
- **Autopilot, not hooked up**
- **Depth Instrument**
- **Fish Finder**
- **Radar**

Electrical Systems:

- **Batteries, 6x**
- **Generator, Honda 2000**
- **Alternator**
- **Engine Kill Switch**
- **Battery Charger**
- **Battery Perko-switch**
- **Circuit Breaker Panel**
- **Shore Power Cord**
- **Flat screen TV**

- **Sound System**
- **Sirius / XM Radio**
- **Ship's Power hook ups**
- **Navigation lights**

Engine and Speed

- **Perkins 85 HP Diesel**
- **Inboard**
- **Cruise Speed, 6-7**
- **Max Speed, 8,5**
- **Fuel Tank Capacity, 120**
- **Raw water cooling system**

Water & Waste Capacity

- **Water Capacity, 200 gal**
- **Waste capacity, composting**

Additional Information

- **Saltwater use**
- **Current Status, outside at dock**
- **Clear Title**
- **Best features, space and amazing Hull**

Basic Information

Sub Category: Cruising Sailboat

Model Year: 1987

Dimensions

LOA: 51' (15.54mm)

Speed, Capacities and Weight

Water Capacity: 200 Gallons

Fuel Capacity: 120 Gal Gallons

Accommodations

Total Cabins: 3

Total Heads: 3

Hull and Deck Information

Hull Material: Fiberglass

Engine Information

Engines: 1

Manufacturer: Perkins Diesel

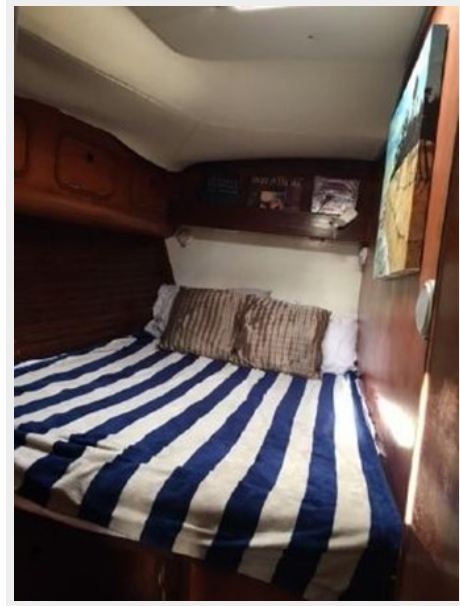
Engine Type: Inboard

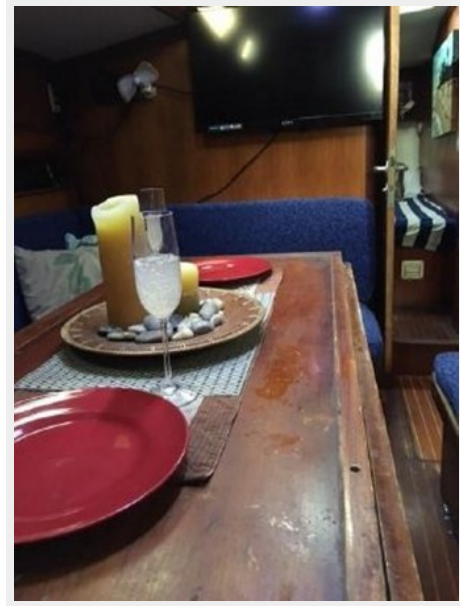
Fuel Type: Diesel

PHOTOS









CONTACTS

Andrey Shestakov, leading yacht broker of the sales department of Shestakov Yacht Sales Inc. Shestakov Yacht Sales Inc., the official representative of the Miami/Fort Lauderdale FL headquarters.

Contact details

Email: andrey@shestakovyachtsales.com

Web: shestakovyachtsales.com/en/

Telephones

USA: +1(954)274-4435

Office hours

Monday – Saturday: **9:00 - 21:00** EDT

Sunday: **closed**

Address



Harbour Towne Marina, 850 NE 3rd St,
STE 213, Dania, FL 33004