

68 SPORT YACHT — SUNSEEKER



Builder: SUNSEEKER

Year Built: 2014

Model: Motor Yacht

Price: PRICE ON APPLICATION

Location: United States

LOA: 68' 0" (20.73m)

Beam: 16' 0" (4.88m)

Max Draft: 5' 2" (1.57m)

Cruise Speed: 24 Kts. (28 MPH)

Max Speed: 33 Kts. (38 MPH)

Our experienced yacht broker, Andrey Shestakov, will help you choose and buy a yacht that best suits your needs 68 Sport Yacht — SUNSEEKER from our catalogue. Presently, at Shestakov Yacht Sales Inc., we have a wide variety of yachts available on our sale's list. We also work in close contact with all the big yacht manufacturers from all over the world.

If you would like to buy a yacht 68 Sport Yacht — SUNSEEKER or would like help answering any questions concerning purchasing, selling or chartering a yacht, please call +1(954)274-4435

TABLE OF CONTENTS

TABLE OF CONTENTS	2
SPECIFICATIONS	3
Overview	3
Basic Information	3
Dimensions	3
Speed, Capacities and Weight	3
Accommodations	4
Hull and Deck Information	4
Engine Information	4
DETAILED INFORMATION	5
Aft Deck	5
Fly Bridge	5
Accommodations	5
Galley	7
Main Helm Console	7
Deck Equipment	8
Mechanical	8
Electrical Equipment	8
Construction	9
Exclusions	9
Disclaimer	9
PHOTOS	10
CONTACTS	16
Contact details	16
Telephones	16
Office hours	16
Address	16

SPECIFICATIONS

Overview

This 68 Sport Yacht is a classic example of Sunseeker design with sleek lines, a sea kindly ride and amazing speeds.

The interior is stunning with satin finish Figured Anegre bulkheads and high gloss Wenge doors and cabinetry. Accommodations include 3 en suite staterooms plus crew aft. Add to that a state of the art entertainment system, high quality fabrics and plenty of natural light and you have a yacht that will be the envy of all.

The exterior areas are sure to impress with large sunpads, a large inviting fly bridge and many comfortable seating areas providing sun or shade, unencumbered views and an unforgettable cruise.

Basic Information

Category: Motor Yacht

Sub Category: Flybridge

Model Year: 2014

Year Built: 2014

Country: United States

Vessel Top: Bimini Top

Dimensions

LOA: 68' 0" (20.73m)

LWL: 53' 10" (16.41m)

Beam: 16' 0" (4.88m)

Max Draft: 5' 2" (1.57m)

Speed, Capacities and Weight

Cruise Speed: 24 Kts. (28 MPH)

Cruise Speed Range: 300

Max Speed: 33 Kts. (38 MPH)

Displacement: 82209 Pounds

Water Capacity: 211 Gallons

Fuel Capacity: 925 Gallons

Accommodations

Total Cabins: 3

Total Heads: 3

Hull and Deck Information

Hull Material: Fiberglass

Hull Configuration: Deep Vee

Engine Information

Manufacturer: MTU

Model: 8V 2000 M94

Engine Type: Inboard

Fuel Type: Diesel

DETAILED INFORMATION

Aft Deck

- Teak-laid cockpit decking
- Stern safety door
- Cockpit speakers with CD remote
- Waeco refrigerator
- Upholstered settee w/cockpit table
- Storage beneath settee
- Aft deck sun pad
- 24v Overhead cockpit lights
- 24v Low-level courtesy lights
- Engine room access hatch
- Fly bridge stairway

Fly Bridge

- Bimini Top
- Teak deck
- U-settee w/custom teak table top
- Large sun pad
- Wet bar w/Victrifrigo icemaker, coolbox, and Kenyon BBQ
- Sportbridge Helm console
- 2 x Raymarine chartplotter, GPS and radar display
- Raymarine depth and speed display
- Raymarine Autopilot
- Raymarine VHF
- Xenta joystick control
- Jabsco searchlight

Accommodations

Deck Salon

- Separate dining area with table
- Settee w/storage below
- 55" Samsung TV on hi/lo
- Harmon Kardon surround sound system
- AirPort Express
- Liquor cabinet

- U-line Wine Cooler
- 24v LED overhead lighting
- Stainless steel sliding door to cockpit
- Main control panel (AC/DC)
- Generator controls
- Air conditioning
- 3 x double AC sockets
- Wood flooring
- Choice of interior finishes and veneers
- Scatter cushions

Master Aft Stateroom

- Centerline Queen berth w/storage below
- Cabinet and drawer storage
- Walk-in cedar lined closet
- 2 x 24v reading lights
- 2 x Nightstands
- 2 x large windows with opening portholes, screens and blinds
- Fitted carpet
- Settee
- 32" Samsung TV
- Harmon Kardon stereo
- En suite head w/shower

Forward Stateroom

- Centerline queen berth w/storage below
- Drawer in base-end
- 2 x 24v reading lights
- Outboard shelving and cabinets
- Hanging locker w/mirrored panel
- 24v LED overhead lighting
- 2 x opening portholes w/screens
- Deck hatch with blind and screen
- Skylight
- Fitted carpet
- Air conditioning
- 32" Samsung TV
- Harmon Kardon stereo
- En Suite head and shower

Starboard Guest Cabin

- 2 x Twin berths w/storage below

- 2 x 24v reading lights
- Hanging locker
- 24v LED overhead lighting
- Opening porthole w/screen and blinds
- Fitted carpet
- Air conditioning
- 22" Samsung TV
- Harmon Kardon stereo
- En Suite head and shower

Crew Quarters-Aft

- Twin berths
- Hanging locker
- Splendide Washer/Dryer
- Head/shower

Galley

- SS Sink and drainer-hot & cold water
- 3 burner Plastimo ceramic touch-control cooktop
- Bosch exhaust fan
- Vitrifigo refrigerator and 2 drawer freezer
- Sharp Microwave convection oven
- Miele dishwasher
- Cabinet and drawer storage
- Granite countertop
- 8 place settings-china and flatware
- Wood flooring

Main Helm Console

- Twin helm seats
- Navigation console with chart area
- MTU Xenta joystick (FB and Main console)
- Analog engine instrumentation
- 2 x Raymarine Displays Chart plotter, radar and Raystar 130 GPS
- Raymarine Radar open scanner
- Raymarine Autopilot
- Raymarine Speed and depth instrumentation
- Raymarine VHS
- Raymarine AIS
- Raymarine sounder and depth display

- Water and Fuel tank gauges
- Trim tab controls
- Dual trumpet Horn

Deck Equipment

- Stainless steel bow roller with anchor stop
- Stainless steel bow plate
- 40 kg Lewmar delta anchor and 90m chain (galvanized)
- Lewmar winch and capstan with deck and Interior helm controls
- Chain locker with fender storage
- Fore Deck sun pad with folding back rest
- Fresh water deck wash outlet fore deck, swim platform, fly bridge
- Hydraulic Passerelle
- Teak laid swim platform, fore deck, side decks and aft deck
- Hand held swim shower
- Lewmar stern docking winches
- Sunbrella aft deck enclosure w/windows
- Garage for tender

Mechanical

- Twin MTU 8V 2000 M94 @1270 hp each
- 23kw Onan generator
- Bow and Stern Thrusters
- Plumbing and wiring for watermaker
- Fuel filters/water separators to engines
- Fuel filters/water separators to generators
- Automatic bilge and flood pumps with high-level alarms
- Generator exhaust silencers and water separators
- Engine exhaust dry risers and water injection
- Power steering – hydraulic control steering
- Garage door and trim tabs hydraulic control unit
- Lifting platform hydraulic control unit
- FM 200 Engine room fire extinguishing system

Electrical Equipment

- 23kW Onan generator with underwater silent exhaust and sound shield
- AC dockside connection
- Galvanic isolator

- 24v and 12v DC electrical system with full circuit breaker protection
- 8 x 24v engine batteries
- 4 x 24v domestic batteries
- 2 x 12v generator batteries
- Alternator split charging system
- Remote battery switches controlled from locker in cockpit
- 24v Battery charger
- 12v Battery charger
- Tropic Spec A/C
- Water heater
- AC electrical sockets throughout the boat
- 24v hand light and cable

Construction

- Hand-laid GRP
- Gel coat including stripes
- Vinylester skin coat with powderbound mat
- Stitched multi-axial reinforced single-skin bottom
- Balsa-cored hull topsides
- PVC foam-cored deck and superstructure
- Hull stiffened with longitudinal stringers supported by transverse bulkheads and floors

Exclusions

Owner's personal belongings.

Disclaimer

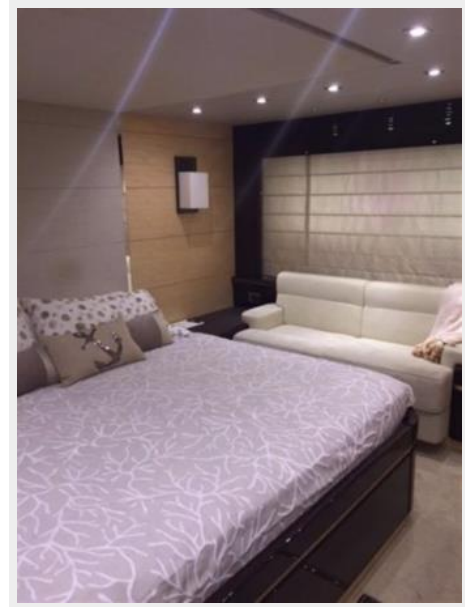
The Company offers the details of this vessel or yacht in good faith but cannot guarantee or warrant the accuracy of this information nor warrant the condition of the vessel. A buyer should instruct his representatives, agents, or his surveyors, to investigate such details as the buyer desires validated. This vessel or yacht is offered subject to prior sale, price change, or withdrawal without notice.

PHOTOS













CONTACTS

Andrey Shestakov, leading yacht broker of the sales department of Shestakov Yacht Sales Inc. Shestakov Yacht Sales Inc., the official representative of the Miami/Fort Lauderdale FL headquarters.

Contact details

Email: andrey@shestakovyachtsales.com

Web: shestakovyachtsales.com/en/

Telephones

USA: +1(954)274-4435

Office hours

Monday – Saturday: **9:00 - 21:00** EDT

Sunday: **closed**

Address



Harbour Towne Marina, 850 NE 3rd St,
STE 213, Dania, FL 33004