

CIAO — RIVA



Builder: RIVA

Year Built: 2011

Model: Motor Yacht

Price: PRICE ON APPLICATION

Location: United States

LOA: 52' 11" (16.13m)

Beam: 15' 1" (4.60m)

Min Draft: 4' 7" (1.40m)

Cruise Speed: 28 Kts. (32 MPH)

Max Speed: 34 Kts. (39 MPH)

Our experienced yacht broker, Andrey Shestakov, will help you choose and buy a yacht that best suits your needs **CIAO — RIVA** from our catalogue. Presently, at Shestakov Yacht Sales Inc., we have a wide variety of yachts available on our sale's list. We also work in close contact with all the big yacht manufacturers from all over the world.

If you would like to buy a yacht **CIAO — RIVA** or would like help answering any questions concerning purchasing, selling or chartering a yacht, please call **+1(954)274-4435**

TABLE OF CONTENTS

TABLE OF CONTENTS	2
SPECIFICATIONS	4
Overview	4
Basic Information	4
Dimensions	4
Speed, Capacities and Weight	4
Accommodations	4
Hull and Deck Information	5
Engine Information	5
DETAILED INFORMATION	6
Overview	6
Hull And Deck	6
Hatches And Windows	7
Cockpit	8
Helm Station	8
Lounge	9
Galley	9
Master Cabin	10
Master Head	11
Guest Stateroom	11
Guest / Day Head	11
Crew Stateroom And Head	12
Engine Room	13
Systems	13
Electrical System	13
Safety	14
Broker's Comment	15
Exclusions	15

Disclaimer	15
PHOTOS	16
CONTACTS	20
Contact details	20
Telephones	20
Office hours	20
Address	20

SPECIFICATIONS

Overview

CIAO is hull 76 of this popular series. She has 863 total time engine hours. Her second owners have put approximately 125 hours in their ownership, primarily in fresh water. CIAO shows her pedigree in this popular series through meticulous care and upgrades. Priced accurately to sell quickly!

Basic Information

Category: Motor Yacht

Model Year: 2011

Year Built: 2011

Country: United States

Dimensions

LOA: 52' 11" (16.13m)

Beam: 15' 1" (4.60m)

Min Draft: 4' 7" (1.40m)

Speed, Capacities and Weight

Cruise Speed: 28 Kts. (32 MPH)

Max Speed: 34 Kts. (39 MPH)

Water Capacity: 132 Gallons

Fuel Capacity: 602 Gallons

Accommodations

Total Cabins: 3

Sleeps: 6

Total Heads: 2

Crew Cabin: 1

Crew Berths: 1

Hull and Deck Information

Hull Material: Fiberglass

Hull Configuration: Deep Vee

Engine Information

Engines: 2

Manufacturer: MAN

Model: D2848LE423

Engine Type: Inboard

Fuel Type: Diesel

DETAILED INFORMATION

Overview

- Complete bottom job with full sanding, two coats epoxy barrier, bottom paint and prop speed, Spring 2016
- Balanced propellers via propscan technology
- Replaced rudder assemblies to install new beds/seats/seals, Spring 2016
- Replaced both shafts with magnaflux, balanced, and new dripless shaft logs, Spring 2016
- Full engine and drive train alignment, Spring 2016
- MAN authorized service for full 1000 hour service on engines, hoses, injectors, pumps, turbos, inter-coolers, after-coolers, etc. Spring 2016. Engine hours: 863 as of March 2018
- Full generator service, Spring 2016
- Replaced all ship's water and waste pumps and hoses
- Spring 2016 Fully detail and painting of engine room, Spring 2016
- Replaced all cockpit upholstery including Bimini Spring 2016
- Replaced stereo system with new head, amps, speakers, remotes, etc. Spring 2016
- Replaced cushions and canvas, 2015
- Updated Garmin GPS
- Updated stern thruster
- Updated underwater lights
- Updated soft goods including bedding, comforters and pillows
- Serviced exhaust sensors

Hull And Deck

- Tender haulage/launch system with electric winch and rollers
- Access to the stern platform with fiberglass steps and antislip surface flooring
- Adjustable searchlight controlled from the helm station
- Air inlet covers (2)
- Bow sunpad with upholstered cushions, side stainless steel handrail and Plexiglass glass holders
- Bow sunpad cover
- Bow watertight bulkhead
- Concealed stainless steel electrohydraulic gangway with automatic stanchions and teak flooring
- Concealed stainless steel electrohydraulic swimming ladder built into in the swimming platform
- Echo transducer moved on aft
- Electric anchor winch 1500 W 24 V controlled from helm station, upper bridge and bow control
- Electric bowthruster

- Electric winch for stern warping 700 W 24 V with foot control
- Electrohydraulic stern garage fiberglass hatch
- Fiberglass antenna support and signal mast with columns in Bright Black color coating
- Fiberglass deck with side walkways in Riva Cream color antislip finish floor
- Fiberglass hatches to cover winches and stern cleats (2)
- Fiberglass hull with Riva Cream color finish
- Fiberglass stern swimming platform with antislip surface Riva Cream color finish
- Freshwater chrome inlet
- Fuel chrome inlet (2)
- Garage lights (2)
- GPS antenna
- Horn
- Hull antifouling coating
- Perimeter stainless steel rub rail
- Radar antenna radome
- Removable fender hooks (6)
- Retractable cleats on the stern platform for tender mooring (2)
- Running lights and anchor lights
- Stainless steel anchor with galvanized steel chain
- Stainless steel bow protection
- Stainless steel cleats: (4) at stern, (2) at midships and (2) at bow
- Stainless steel deck accessories
- Stainless steel fairleads at bow and stern
- Stainless steel rail
- Stainless steel signal mast
- Steel buckle for fender holder pins (6 per side)
- Stern compartment with hatch housing shore electric supply
- Stern compartment with hatch housing shower unit and mixer tap, freshwater tap for deck wash and freshwater shore connection
- Stern garage for tender housing
- TV antenna
- VHF antenna

Hatches And Windows

- Access hatch to crew cabin
- Emergency exit hatch from bow cabin to the deck
- Engine room access hatchway from the cockpit
- Interior doors in wood with stainless steel handle and threshold
- Side windows in Plexiglass with builtin stainless steel portholes
- Stainless steel and Plexiglass portholes
- Stainless steel and tempered glass windshield
- Technical forepeak access hatches (2)

- Tempered glass sliding access door to below deck areas with lock
- Wipers with builtin washers (2)

Cockpit

- Amplifier with remote control and loudspeakers
- Barbeque
- Central sofa and stern sunpad cover
- Concealed electrohydraulic sunshade
- Fiberglass wet bar equipped with sink, icemaker, refrigerator, beech chopping board, preparation for electric grill
- Icemaker
- Living and dining area with two sofas at stern with upholstered cushions, underneath life rafts storage
- Sliding stern gates in fiberglass with manual blocking system
- Spotlights in the cockpit
- Stainless steel table with glossy coated teak folding top
- Starboard side sofa cover
- Stern stainless steel rail with the Riva logo
- Stern sunpad with upholstered cushions
- Table cover
- Teak cockpit, side walkways, swimming platform and stern steps

Helm Station

- Fusion stereo
- Acoustic alarm for water in bilge
- Adjustable searchlight control panel
- Anchor chain digital counter
- Audio/video configuration
- Automatic pilot with rudder angle gauge interfaced with plotter/GPS
- Color plotter/GPS
- Compartment with Mini HiFi CD
- Dashboard panels in Plexiglass
- Depth Sounder
- Echosounder function
- Electric bowthruster control panel with joystick
- Electrohydraulic steering system
- Emergency activation/shutoff panel in “shutdown” unit (engines, generator and extractors shut down in the engine room) with cylinder status gauge
- Engine and reverse gear electronic controls
- Engine room high temperature acoustic alarm

- Fiberglass helm station with Bright Black color finish, covered steering wheel, complete engine instrumentation, magnetic compass, rev. counter with hour counter, controls, alarm lights
- Fire extinguisher
- Flooring with antislip surface Riva Cream color finish
- Fuel filters water alarm
- Furuno Navnet 3D 12"
- Furuno Electronics System
- Helm station total cover
- Multifunction navigation instrument (depth, speed, compass, temperature)
- Onboard computer with the following functions: trim tabs and rudder position, recommended trim position, consumption, water and fuel tanks filling
- Pilot seat cover
- Pilot seat unit with two seats one of which can be folded manually
- Socket (cigarette lighter type) 12 V
- Spotlight
- Twoseater pilot seat in leather (one foldaway)
- VHF radio telephone with DSC
- Windscreen washerwiper control panel

Lounge

- Bose 321 Stereo System
- IPOD Docking Station
- Carpeted flooring with padding underneath
- Ceiling upholstered with vinyl fabric with lacquering
- Cushions
- Electric outlet 230 V
- HiFi system
- Leather covered ottoman with storage compartment and wooden base (2)
- Leather sofa with 4 seats
- Open shelving in essence
- Porthole housing with hull window and Venetian blinds
- Spotlights
- Stainless steel handrail and ladder with wooden steps and carpet, to access below deck
- TV 32" (60Hz)
- Wooden bulkheads and furniture with leather panels
- Wooden cabinet
- Wooden table and mirror with base in wood and stainless steel
- Writing area with floor and cabinets in wood

Galley

- Antislip surface wooden flooring
- Bulkhead builtin unit for refrigerator with leather upholstered door
- Concealed Corian® worktop in the unit with incorporated wash basin and mixer tap
- Dishwasher 60Hz
- Electric outlet 230 V
- Extractor fan 60Hz
- Fire extinguisher
- Furniture and wall units in wood
- Glass ceramic cooking top with pan holder
- Glossy lacquered ceiling
- Housing for pots and pans, tableware and cutlery
- Icemaker
- Microwave oven 60Hz
- Open shelving in essence
- Porthole housing and Venetian blinds
- Refrigerator and 45litre freezer 24/230 V, 142lt
- Sink with mixer tap
- Spotlights
- Walls in wood

Master Cabin

- Bed border upholstered in leather
- Carpeted flooring with padding underneath
- Ceiling upholstered with vinyl fabric with lacquering
- Cushions 40 x 40 cm (2)
- Docking station for Mbquarter
- Double bed with mattress, pillows, bedspread and pillow covers
- Drawer under the bed
- Electric outlet 230 V
- Fire extinguisher
- Headboard upholstered in leather with integrated mirror
- Lockers
- Mini HiFi CD
- Nightstands with lacquering (2)
- Porthole housing and Venetian blinds
- Safe
- Sheets and pillow cases set
- Spotlights
- TV 19" (60Hz)
- Varnished bed base, steps and chest of drawers
- Walls and furniture in wood
- Wardrobe with courtesy lights (2)

Master Head

- Bathroom accessories (towel rail, soap holder, (2) bathrobe hangers, toilet paper holder, toilet brush holder and glass for toothbrushes)
- Black water tank level indicator integrated in the toilet control panel
- Color lacquered ceiling
- Electric ceramic toilet/bidet
- Electric extractor
- Electric outlet 230 V
- Fiberglass flooring
- Porthole housing with hull window and Venetian blinds
- Round shower cubicle with round Plexiglass sliding doors
- Spotlights
- Stainless steel wash basin with mixer tap
- Walls in wood and laminate
- Wash basin top in satin glass and stainless steel
- Wooden locker
- Wooden unit under wash basin

Guest Stateroom

- Bed border upholstered in leather
- Carpeted flooring with padding underneath
- Cushions 40 x 40 cm (2)
- Docking station for Mbquarter
- Electric outlets 230 V
- Fire extinguisher
- Headboard upholstered in leather with integrated mirror
- Mini HiFi CD
- Open shelving in essence
- Porthole housing with Venetian blinds
- Sheets and pillow cases (2 sets)
- Single beds with: mattresses, pillows, bedspreads and pillow covers (2)
- Spotlights
- Upholstered ceiling with lacquering
- Walls and furniture in wood and leather inserts
- Wardrobe with courtesy lights
- Wooden bedside table

Guest / Day Head

- Additional access from lower deck lobby

- Bathroom accessories (towel rail, soap holder, (2) bathrobe hangers, toilet paper holder, toilet brush holder and glass for toothbrushes)
- Black water tank level indicator integrated in the toilet control panel
- Electric ceramic toilet/bidet
- Electric extractor
- Electric outlet 230 V
- Fiberglass flooring
- Lacquered ceiling
- Mirror
- Porthole housing with Venetian blinds
- Round shower cubicle with round Plexiglass sliding doors
- Set of towels (2)
- Spotlights
- Stainless steel wash basin with mixer tap
- Walls in wood and laminate
- Wash basin top in satin glass and stainless steel
- Wooden locker and shelves and mirror door
- Wooden unit under wash basin

Crew Stateroom And Head

- Access to stair from the cockpit and lounge door
- Bathroom accessories (towel rail, soap dispenser, (2) bathrobe hangers, toilet paper holder, toilet brush holder and glass for toothbrushes)
- Bed with mattress, pillow and bedspread Black water tank level indicator integrated in the toilet control panel
- Carpeted flooring with padding underneath
- Ceiling upholstered with fabric
- Concealed electric toilet/bidet
- Concealed wash basin
- Corian® basin top
- Electric extractor
- Electric outlet 230 V
- Fire extinguisher
- Headboard upholstered in leather
- Mini HiFi CD
- Mirror
- Porthole housing with aluminum Venetian blinds
- Shower with waterproof curtain
- Spotlights
- Suspended essence
- Walls and furniture in wood
- Wooden bedside table

Engine Room

- (2) MAN D2848LE423 900 HP engines
- Twin disc model 5114 reduction gear (V-drive) 1.92:1
- (2) Air inlets
- Antislip floor
- Electric outlet 230 V
- (2) Engine cooling water filters
- (2) Engine gas outlets with mufflers and silencers
- Engine room temperature alarm sensor
- Fiberglass fuel tank holding 2280 liters with visual level
- Freshwater tap for topping up and cleaning
- (2) Fuel water separator filters with alarms
- Lighting
- Stainless steel ladder to access engine room
- Water on board alarm sensor

Systems

- 30,000 BTU/h Tropical A/C System
- Air extraction system in the engine room
- Automatic extinguisher FM200 in engine room with external control
- Bilge discharge system using main engines suction in the event of an emergency (2)
- Bilge discharge system with immersed electric pumps with automatic controls
- Black water discharge system with a 106 litre centralized holding tank and pump
- Centralized bilge discharge system connected to multifunction pump with switch for each area
- Chain seawater washing system
- Device for remote closure of the engine fuel supply valves and generator controlled by the fire fighting system
- Electrohydraulic power assisted steering system
- Fresh water system autoclave with electronic control 24 V
- Fresh water water tank 500lt
- Freshwater system
- Fuel interception valves for engine and generator power supply
- Grey water 3 way valve in galley
- Grey water discharge system with holding tank and electric pump
- Hot water system with 30litre boiler
- Trim tabs system (flaps)
- WC system with freshwater flush

Electrical System

- Automatic battery charger
- Battery charger for generator
- Battery parallel facility for starting up engines
- Battery switches
- Bonding system with porous copper plate
- Breaker box
- Carling Switch 50A for 240V shore supply
- Cathodic protection with zinc anodes
- Electrio Hydraulic Steering
- Engine battery set low water loss
- Galvanic isolator 50A
- Generator: Kohler 13EOZD, 13 KW/ 60Hz with soundproof box, exhaust gas and cooling water separator
- Generator battery low water loss
- Genset hours are 1575
- Glendinning 50A 4 poles cable reeler for shore cable
- Glendinning remote control
- Ground fault interrupters 120V 6mA
- Hatch control sensors
- Internal American sockets: double 120V sockets on every box
- Lighting 24 V and 230 V outlets in various areas
- Manual battery switch for generator
- Porous ground plate top dedicated to electronics dashboard
- Preparation for decoder: cable 120V + F connector + TV SAT antenna cables in all cabins
- Preparation for TV: cable 120V + F connector + TV antenna cables
- Racor generator filter and stern steps
- Service battery set low water loss
- Shore power connection with cable 32A 230 V 50Hz
- Switch panel
- Voltage reducer for VHF 24/12 V

Safety

- Electrical manual for American version
- Illuminated float
- Inflatable life jacket (10)
- Life rafts compliant to American requirements 10 people
- Life ring with floater
- Manual fire extinguishers
- Mechanical parts compliant to NMMA
- Model indication plate (XFA number)
- NMMA Certification (inspection, testing, documents)
- NMMA compliance plate

- Owner manual for American version
- Shore power GFI 50A30mA
- Warning labels

Broker's Comment

CIAO is hull 76 of this popular series. She has 863 total time engine hours. Her second owners have put approximately 125 hours in their ownership, primarily in fresh water. CIAO shows her pedigree in this popular series through meticulous care and upgrades. Priced accurately to sell quickly!

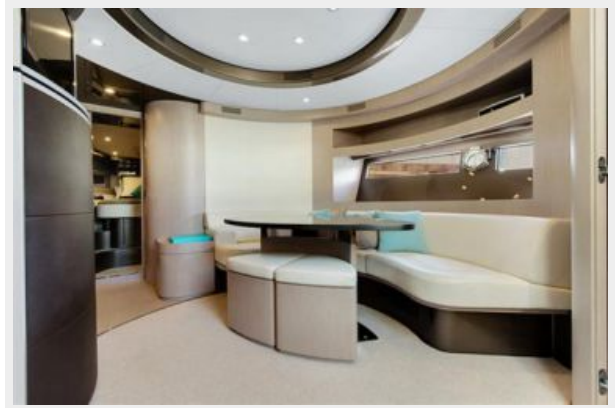
Exclusions

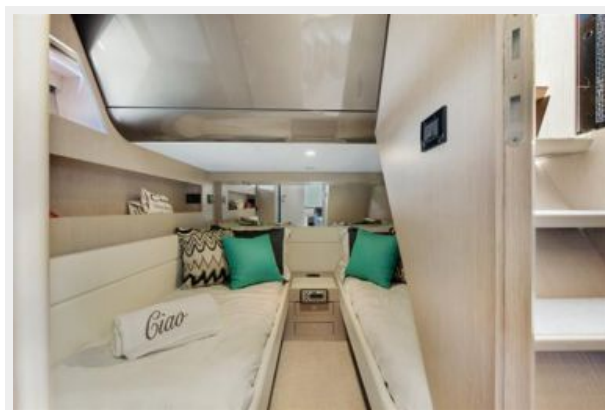
Owner's personal belongings.

Disclaimer

The Company offers the details of this vessel or yacht in good faith but cannot guarantee or warrant the accuracy of this information nor warrant the condition of the vessel. A buyer should instruct his representatives, agents, or his surveyors, to investigate such details as the buyer desires validated. This vessel or yacht is offered subject to prior sale, price change, or withdrawal without notice.

PHOTOS









CONTACTS

Andrey Shestakov, leading yacht broker of the sales department of Shestakov Yacht Sales Inc. Shestakov Yacht Sales Inc., the official representative of the Miami/Fort Lauderdale FL headquarters.

Contact details

Email:
andrey@shestakovyachtsales.com

Web: shestakovyachtsales.com/en/

Telephones

USA: **+1(954)274-4435**

Office hours

Monday – Saturday: **9:00 - 21:00 EDT**

Sunday: **closed**

Address



Harbour Towne Marina, 850 NE 3rd St,
STE 213, Dania, FL 33004