

GREEN EYED LADY — FORMULA



Builder: FORMULA

Year Built: 2005

Model: Cruiser

Price: PRICE ON APPLICATION

Location: United States

LOA: 31' 0" (9.45m)

Beam: 11' 0" (3.35m)

Max Draft: 3' 4" (1.02m)

Our experienced yacht broker, Andrey Shestakov, will help you choose and buy a yacht that best suits your needs **Green Eyed Lady — FORMULA** from our catalogue. Presently, at Shestakov Yacht Sales Inc., we have a wide variety of yachts available on our sale's list. We also work in close contact with all the big yacht manufacturers from all over the world.

If you would like to buy a yacht **Green Eyed Lady — FORMULA** or would like help answering any questions concerning purchasing, selling or chartering a yacht, please call **+1(954)274-4435**

TABLE OF CONTENTS

| | |
|------------------------------|----|
| TABLE OF CONTENTS | 2 |
| SPECIFICATIONS | 3 |
| Overview | 3 |
| Basic Information | 3 |
| Dimensions | 3 |
| Speed, Capacities and Weight | 3 |
| Accommodations | 4 |
| Hull and Deck Information | 4 |
| Engine Information | 4 |
| PHOTOS | 5 |
| CONTACTS | 15 |
| Contact details | 15 |
| Telephones | 15 |
| Office hours | 15 |
| Address | 15 |

SPECIFICATIONS

Overview

MAKE AN OFFER AND TAKE HER HOME!! Come see what all the fuss is about! Only 547/539 hours on Mercruisers 6.2 and a Kohler Gen with 874 hours. Dry stacked and well maintained. Newer Raymarine ST60 Depth finder. Newer GPS Map 5208 Garmin. New Alternator. New Starboard side Exhaust Riser. Stepping onto this well maintained boat the cockpit welcomes you with a U-Shaped lounge and dual tables with separate pedestals allowing for lowering the tables and adding filler cushions to turn space into a sun pad. To port is a sink and waste basket with counter space to spare and a dual voltage refrigerator below. The helm seating allows for a companion for captain and a walk through with molded steps and convenient grab rails for easy access to bow. Below deck the 31 PC is a showcase of fit and finish. The eye immediately takes in the gleaming finish and upon closer inspection one can see the extra work that Formula puts into their interiors. In the galley besides ample storage you will find the necessities such as a refrigerator, stove top, sink, microwave oven and a small TV. Seating on starboard is spacious and comfortable with high gloss wooden tables which go low for an optional berth. For your overnight comfort you will find a full double bed forward full wet head midship and conversation area aft allowing for comfort for up to 6 guests with 6'4" of headroom.

Basic Information

Category: Cruiser

Model Year: 2005

Year Built: 2005

Country: United States

Cockpit: Yes

Dimensions

LOA: 31' 0" (9.45m)

Beam: 11' 0" (3.35m)

Max Draft: 3' 4" (1.02m)

MFG Length: 33' 1" (10.08m)

Speed, Capacities and Weight

Water Capacity: 50 Gallons

Fuel Capacity: 180 Gallons

Accommodations

Total Cabins: 2

Total Heads: 1

Hull and Deck Information

Hull Material: Fiberglass

Engine Information

Engines: 2

Manufacturer: Mercruiser

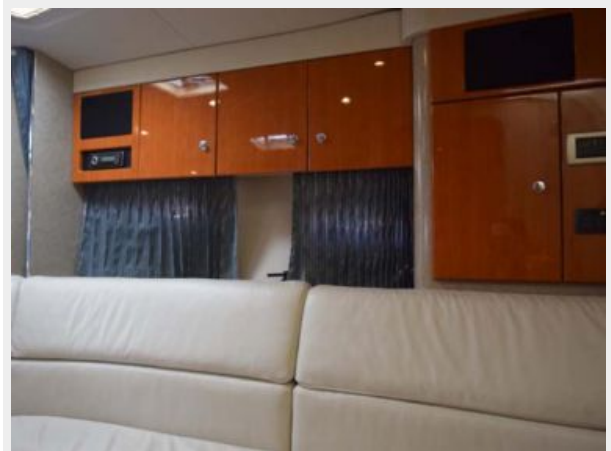
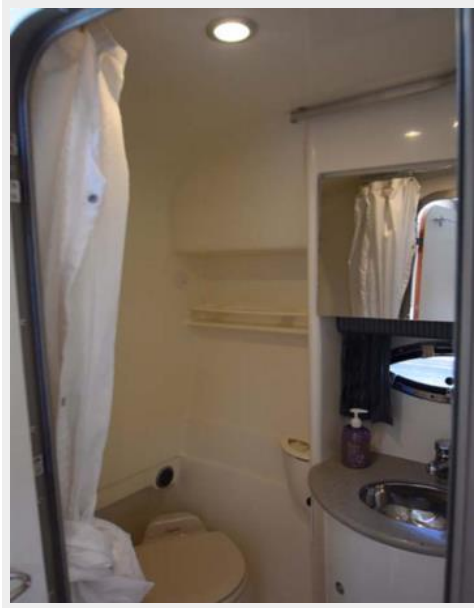
Model: 6.2 MPI

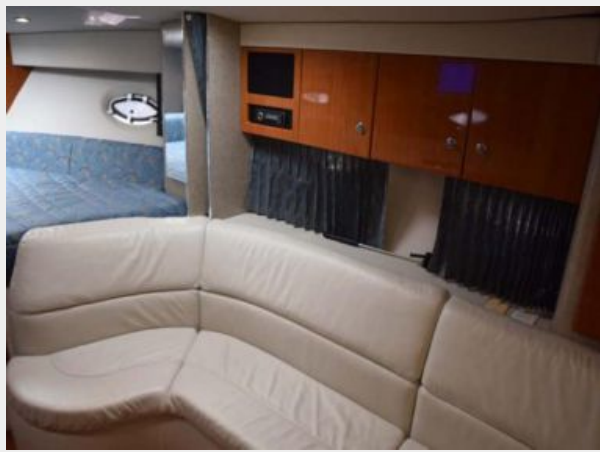
Engine Type: Inboard

Fuel Type: Gas

PHOTOS

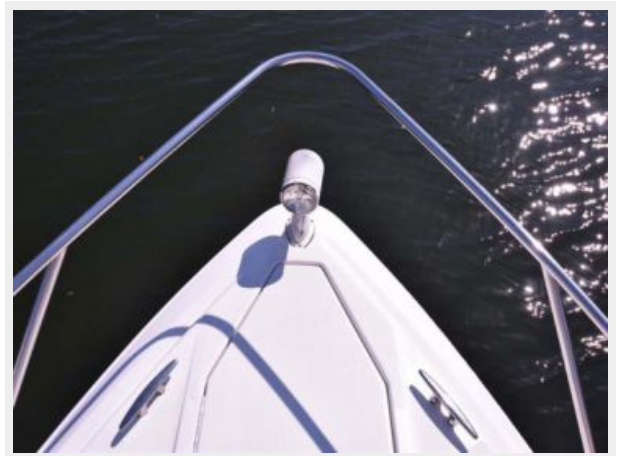




















CONTACTS

Andrey Shestakov, leading yacht broker of the sales department of Shestakov Yacht Sales Inc. Shestakov Yacht Sales Inc., the official representative of the Miami/Fort Lauderdale FL headquarters.

Contact details

Email: andrey@shestakovyachtsales.com

Web: shestakovyachtsales.com/en/

Telephones

USA: +1(954)274-4435

Office hours

Monday – Saturday: **9:00 - 21:00** EDT

Sunday: **closed**

Address



Harbour Towne Marina, 850 NE 3rd St,
STE 213, Dania, FL 33004