

INTERMEZZO — ISLAND PACKET YACHTS



Builder: ISLAND PACKET YACHTS

Year Built: 1989

Model: Cutter

Price: PRICE ON APPLICATION

Location: United States

LOA: 38' 0" (11.58m)

Beam: 12' 8" (3.86m)

Max Draft: 5' 0" (1.52m)

Our experienced yacht broker, Andrey Shestakov, will help you choose and buy a yacht that best suits your needs **Intermezzo — ISLAND PACKET YACHTS** from our catalogue. Presently, at Shestakov Yacht Sales Inc., we have a wide variety of yachts available on our sale's list. We also work in close contact with all the big yacht manufacturers from all over the world.

If you would like to buy a yacht **Intermezzo — ISLAND PACKET YACHTS** or would like help answering any questions concerning purchasing, selling or chartering a yacht, please call **+1(954)274-4435**

TABLE OF CONTENTS

TABLE OF CONTENTS	2
SPECIFICATIONS	4
Overview	4
Basic Information	4
Dimensions	4
Speed, Capacities and Weight	4
Accommodations	5
Hull and Deck Information	5
Engine Information	5
DETAILED INFORMATION	6
Galley	6
Accommodations	6
Sails & Rigging	6
Deck	7
Electrical	7
Additional	7
Exclusions	8
Disclaimer	8
PHOTOS	9
Under Sail	9
Helm Electronics	9
Helm	10
Helm Electronics	10
Anchor Windless	10
Salon looking Forward	10
Portside sette	10
Nav Station Starboard side	11
Master Pullman	11

Aft Stateroom	11
Forward stateroom looking aft	11
Forward Head	11
Anchor Locker	11
Galley	12
Oven	12
Dodger	12
Captains seat	12
Yanmar	12
CONTACTS	13
Contact details	13
Telephones	13
Office hours	13
Address	13

SPECIFICATIONS

Overview

Seller Motivated - Bring All Reasonable Offers

This popular IPY 38 is a two owner boat. The first thirteen years of Intermezzo life was spent in fresh water on Lake Michigan and was lightly used. Intermezzo has never been chartered, raced or been in a Liv aboard status and is dried stored six months a year during Hurricane season.

Note the following items that set this 38 Ft. Island Packet apart from others that are on the market (Major overhaul just completed with the Auxilary Yanmar engine - less than 10 hours) (Custom Blue hull (Alwgrip) (Bottom stripped and soda blasted 2 new barrier coats- 2013) (All 12 porthole glass and seals replaced 2014) (New Bimini / Dodger November 2017) (Dingy davits with solar panels) (10 Ft. Caribe hard bottom tender & 4 stroke outboard motor ...Clean and a must see! More Information and pictures coming soon. DYSID:3160079

Basic Information

Category: Cutter

Model Year: 1989

Year Built: 1989

Country: United States

Dimensions

LOA: 38' 0" (11.58m)

LWL: 33' 0" (10.06m)

LOD: 38' 0" (11.58m)

Beam: 12' 8" (3.86m)

Max Draft: 5' 0" (1.52m)

Speed, Capacities and Weight

Displacement: 21500 Pounds

Water Capacity: 157 Gallons

Holding Tank: 30 Gallons

Fuel Capacity: 57 Gallons

Accommodations

Total Cabins: 2

Total Berths: 4

Total Heads: 2

Hull and Deck Information

Hull Material: Fiberglass

Hull Configuration: Monohull

Engine Information

Engines: 1

Manufacturer: Yanmar

Model: W-44

Fuel Type: Diesel

DETAILED INFORMATION

Galley

Adler Barbour refrigerator, 12 volt, two deep stainless sinks.

Princes gimbaled propane oven with three burner stainless steel top with pot holders.

Generous storage lockers, drawers & shelves.

Hot & Cold pressurized fresh water with manual hand pump.

Accommodations

Large Salon with fold down dining table / cabinet, teak & holly floors throughout.

2013 - 16000 BTU Cruisair Air / heat with computerized SMX II controls outlet in salon and forward berth.

New California custom queen size HMY Mattress with custom sheets in Pullman berth forward, cedar lined closets.

Queen Berth in aft cabin, cedar lined closets.

Main Salon has pullout double berth with extensive shelving.

Hella fans throughout, forward & aft heads have covered GFI outlets.

Chelsa Ships bell, clock & barometer.

Sails & Rigging

Harken roller furling, aluminum spreaders, three to one rigid boom vang.

130 Genoa head sail, staysail & main sail all in excellent condition.

Staysail has self tacking boom.

Mainsail has Mack Pack with lazy jacks system.

Two pair line clutches.

Isomat Aluminum Mast.

Lewmar 30 speed self tailing winch - main - Two Lewmar 46 self tailing - Genoa,

Lewmar 16 - Staysail. Additional winches Lewmar 8 & 24

Running Rigging all replaced new 2014.

Deck

Anchors 45 & 35 lb. CQR's Spilt anchor locker with forward berth access - no smells.

Simpson Lawrence horizon 1500 remote electric windless with foot pedal and manual handle.

Two Stainless Steel winch handles.

Two Stainless steel dual anchor roller snubbers.

Bow pulpit two tier stainless steel, side stanchions with double vinyl covered lifelines with port & starboard openings for boarding.

Two bow, two stern cleats with chocks, four amidship cleats.

Side mounted coastguard approved quick release five step fold down safety swim ladder.

Dingy davits, 2.5 HP Yamaha four stroke engine, 2001 10 ft. Caribe hard bottom tender. Life sling hoist, Nova lift rated to 275 lbs.

Electrical

Three AMG Batteries

Perko rotary selector type smart switch.

True charge battery charger 40 amp multi stage

New 80 Amp Engine alternator installed in 2009 and spare 65 amp alternator.

Vessel fully bonded grounded from chain plates to keel / reverse polarity indicator.

110 Volt to boat adapter 10 ft. Shore power cable.

Galvanic Isolater - all outlets GFI protected.

2017 Kyrocera Solar panels (3) with blue star regulator - Mounted above dingy davits.

Additional

Custom Dark blue hull - painted with Alwgrip, Gold pinstripe with red boot stripe.

Hull Stripped and soda blasted with two coats barrier coats applied.

Integral Keel and hull, strongest possible construction with no keel bolts.

Coarse Diamond Non- skid decks.

New fresh water pump - 2009

Complete inventory of bumpers, lines & safety equipment.

Assortment of spare parts.

Twelve stainless steel side opening ports - all glass & seals replaced in 2014 - all hatches have screens and UV blackout covers.

November 2017 - New Custom Bimini & Dodger.

Yanmar Diesel rebuilt - 2017

New Transmission installed -2008

New PYI Dripless shaft - 2017

Exclusions

Owner's personal belongings.

Disclaimer

The Company offers the details of this vessel or yacht in good faith but cannot guarantee or warrant the accuracy of this information nor warrant the condition of the vessel. A buyer should instruct his representatives, agents, or his surveyors, to investigate such details as the buyer desires validated. This vessel or yacht is offered subject to prior sale, price change, or withdrawal without notice.

PHOTOS



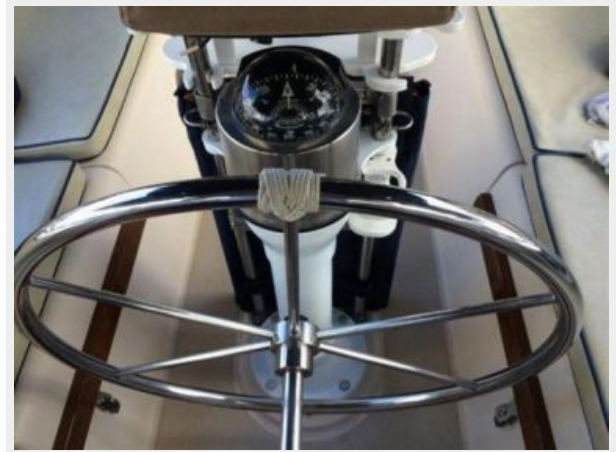
Under Sail



Helm Electronics



Helm



Helm Electronics



Anchor Windless



Salon looking Forward



Portside sette



Nav Station Starboard side



Master Pullman



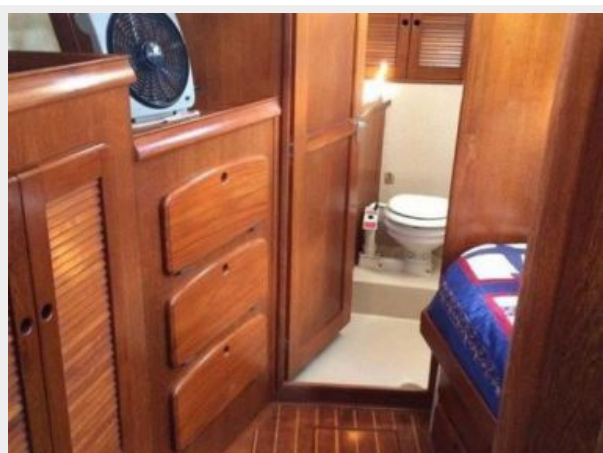
Aft Stateroom



Forward stateroom looking aft



Forward Head



Anchor Locker



Galley



Oven



Dodger



Captains seat



Yanmar



CONTACTS

Andrey Shestakov, leading yacht broker of the sales department of Shestakov Yacht Sales Inc. Shestakov Yacht Sales Inc., the official representative of the Miami/Fort Lauderdale FL headquarters.

Contact details

Email: andrey@shestakovyachtsales.com

Web: shestakovyachtsales.com/en/

Telephones

USA: +1(954)274-4435

Office hours

Monday – Saturday: **9:00 - 21:00** EDT

Sunday: **closed**

Address



Harbour Towne Marina, 850 NE 3rd St,
STE 213, Dania, FL 33004