

BON VOYAGE — TA CHIAO



Судостроитель: TA CHIAO

Год постройки: 1977

Модель: Крейсерский кеч

Цена: ЦЕНА ЯХТЫ ПО ЗАПРОСУ

Местонахождение: United States

Длина общая: 41' 0" (12.50m)

Ширина: 12' 0" (3.66m)

Мин. осадка: 6' 0" (1.83m)

Купить **BON VOYAGE — TA CHIAO** а также выбрать подходящую вам яхту из нашего каталога яхт вам поможет опытный яхтенный брокер Андрей Шестаков. На сегодняшний день компания **Shestakov Yacht Sales Inc.** имеет большое количество яхт в собственном списке продаж, а также тесно сотрудничает со всеми крупными яхтенными производителями по всему миру.

Для того чтобы купить яхту **BON VOYAGE — TA CHIAO** а также проконсультироваться по любому вопросу связанному с покупкой, продажей, чартером яхт позвоните по телефону **+7(918)465-66-44**.

ОГЛАВЛЕНИЕ

ОГЛАВЛЕНИЕ	2
ХАРАКТЕРИСТИКИ	5
Обзор	5
Основная информация	5
Размеры	6
Скорость, вместимость и масса	6
Размещение	6
Корпус и палуба	6
ПОДРОБНОЕ ОПИСАНИЕ	7
BON VOYAGE 1977 CT 42 WALKTHROUGH	7
BON VOYAGE 1977 CT 41 ACCOMMODATIONS	7
BON VOYAGE 1977 CT 41 GALLEY	7
BON VOYAGE 1977 CT 41 SALON	7
BON VOYAGE 1977 CT 41 Master Stateroom	8
BON VOYAGE 1977 CT 41 MASTER HEAD	8
BON VOYAGE 1977 CT 41 COCKPIT	8
BON VOYAGE 1977 CT 41 ELECTRONICS	9
BON VOYAGE 1977 CT 41 DECK	9
BON VOYAGE 1977 ct 41 ELECTRICAL & PLUMBING	9
BON VOYAGE 1977 CT 41 MECHANICAL	10
BON VOYAGE 1977 CT 41 Tankage	10
BON VOYAGE 1977 CT 41 Anchoring and Safety	10
BON VOYAGE 1977 CT 41 UPGRADES	10
Additional Units Included	11
Исключения	11
Отказ от ответственности	11
ФОТОГРАФИИ	12
(3) BON VOYAGE 1977 CT 41 Port Bow	12

(2) BON VOYAGE 1977 CT 41 Cockpit	12
(5) BON VOYAGE 1977 CT 41 Cockpit Seating	12
(4) BON VOYAGE 1977 CT 41 Dodger	12
(6) BON VOYAGE 1977 CT 41 Cockpit Aft	12
(7) BON VOYAGE 1977 CT 41 Helm	12
(8) BON VOYAGE 1977 CT 41 Helm Instruments	13
(9) BON VOYAGE 1977 CT 41 Magnetic Compass	13
(10) BON VOYAGE 1977 CT 41 Cockpit to Port	13
(11) BON VOYAGE 1977 CT 41 Cockpit to Stbd	13
(12) BON VOYAGE 1977 CT 41 Belaying Pins	13
(13) BON VOYAGE 1977 CT 41 Stbd Side Deck	13
(14) BON VOYAGE 1977 CT 41 Foredeck	14
(15) BON VOYAGE 1977 CT 41 Windlass	14
(16) BON VOYAGE 1977 CT 41 Bow Pulpit	14
(17) BON VOYAGE 1977 CT 41 Foredeck Aft	14
(18) BON VOYAGE 1977 CT 41 Belaying Pins Port Side	14
(19) BON VOYAGE 1977 CT 41 Stbd Sidedeck Aft	14
(20) BON VOYAGE 1977 CT 41 Port Sidedeck Aft	15
(21) BON VOYAGE 1977 CT 41 Companionway	15
(23) BON VOYAGE 1977 CT 41 Interior Port Side	15
(22) BON VOYAGE 1977 CT 41 Interior Fwd	15
(24) BON VOYAGE 1977 CT 41 Interior Stbd	15
(25) BON VOYAGE 1977 CT 41 Galley	15
(26) BON VOYAGE 1977 CT 41 Galley Range	16
(27) BON VOYAGE 1977 CT 41 Galley to Port	16
(29) BON VOYAGE 1977 CT 41 Nav Station to Stbd	16
(28) BON VOYAGE 1977 CT 41 Nav Station	16
(31) BON VOYAGE 1977 CT 41 Where ever you go...You go in Peace	16
(30) BON VOYAGE 1977 CT 41 Woodstove	16

(33) BON VOYAGE 1977 CT 41 Settee	17
(32) BON VOYAGE 1977 CT 41 Butterfly Hatch	17
(34) BON VOYAGE 1977 CT 41 Seating to Stbd	17
(35) BON VOYAGE 1977 CT 41 Beverage Storage	17
(36) BON VOYAGE 1977 CT 41 Woodstove to Stbd	17
(37) BON VOYAGE 1977 CT 41 Portable Air Conditioning	17
(39) BON VOYAGE 1977 CT 41 V-Berth to Port	18
(38) BON VOYAGE 1977 CT 41 V-Berth	18
(40) BON VOYAGE 1977 CT 41 V-Berth to Stbd	18
(41) BON VOYAGE 1977 CT 41 V-Berth Storage	18
(43) BON VOYAGE 1977 CT 41 Vacu-flush Toilet	18
(42) BON VOYAGE 1977 CT 41 Head to Port	18
(44) BON VOYAGE 1977 CT 41 Stand-alone Shower	19
(45) BON VOYAGE 1977 CT 41 Sole	19
(46) BON VOYAGE 1977 CT 41 Interior Af	19
(47) BON VOYAGE 1977 CT 41 Isuzu Diesel	19
(50) BON VOYAGE 1977 CT 41 Mercury 15Hp	19
(49) BON VOYAGE 1977 CT 41 Dinghy	19
(52) BON VOYAGE 1977 CT 41 Bow Pulpit Support	20
(51) BON VOYAGE 1977 CT 41 Stern	20
(54) BON VOYAGE 1977 CT 41 3-Blade Fixed Prop	20
(53) BON VOYAGE 1977 CT 41 Full Keel	20
КОНТАКТЫ	21
Контактная информация	21
Телефоны	21
Время работы	21
Адрес	21

ХАРАКТЕРИСТИКИ

Обзор

Cruise the Bahamas, Caribbean and Beyond... "Where ever you go...You go in Peace" . This Chinese saying is carved in Teak and experienced in the spirit of this Taiwanese built vessel. Laying eyes on BON VOYAGE with the classic lines of this 1977 design is a nostalgic experience. From the NEW Bow Pulpit to the center cockpit with traditional wheel and beautiful classic interior your heart will yearn for the journeys you've been dreaming about. This Ketch has many new additions and updates that make this a comfortable enchanting sailing vessel.

- NEW Bow Pulpit
- NEW LED Tri lights
- NEW LED Transom lights
- Updated Aluminum Masts
- NEW Rigging
- Updated Harken Winches
- NEW Sail Covers
- NEW Butterfly hatch cover
- NEW Lazy Jack System
- The teak decks are in good condition - brite work shines.
- NEW canvas dodger cover
- NEW Refrigerator
- NEW Water Heater
- Portable Air Conditioner
- NEW Bottom Paint -Two coats of Trinidad
- NEW Zincs
- NEW Cutlass Bearing
- Dinghy w/15Hp Outboard

Основная информация

Тип судна: Крейсерский кеч

Модельный год: 1977

Год постройки: 1977

Страна: United States

Размеры

Длина общая: 41' 0" (12.50m)

Длина по ватерлинии: 36' 5" (11.10m)

Ширина: 12' 0" (3.66m)

Мин. осадка: 6' 0" (1.83m)

Трапы: 62' 0" (18.90m)

Скорость, вместимость и масса

Водоизмещение: 27500 Pounds

Вместимость воды: 55 Gallons

Вместимость сточного бака: 20 Gallons

Объем топливного бака: 150 Gallons

Размещение

Всего кают: 1

Всего коек: 1

Всего ком. состава: 1

Корпус и палуба

Материал корпуса: Fiberglass

Комплектация корпуса: Monohull

ПОДРОБНОЕ ОПИСАНИЕ

BON VOYAGE 1977 CT 42 WALKTHROUGH

Step on this nostalgic sailing vessel port side into the center cockpit. Aft has below-deck storage and forward is the companionway four steps down to the cabin. To port is the galley and stbd is the nav station with day bed bench. Salon continues forward with cushioned bench with storage to stbd and U-shaped seating and hi-lo table to port. Also can be made to be a double berth. Forward to port is head/shower. Then the Master V-berth with ample storage.

BON VOYAGE 1977 CT 41 ACCOMMODATIONS

BON VOYAGE with her classic nautical wheel, has a center cockpit that seats six on the generous NEW seat cushions making any voyage a comfortable one. BON VOYAGE can adequately sleep six comfortably. The Master stateroom has an oversized V-Berth, the salon U-shaped seating, a stbd cushioned bench mid-ship and a nav station with single berth.

BON VOYAGE 1977 CT 41 GALLEY

The portside functional, classic, clean teak galley includes:

- Two burner gas stove/oven Regal Galley Maid
- Fridge, Norcold, DE0788B ac/dc
- Duel S/S sinks
- Six drawers
- Two cabinets
- Spice rack
- Hanging wine glass holder
- Tuck away end of counter space for garbage

BON VOYAGE 1977 CT 41 SALON

The Salon on BON VOYAGE has many wonderful details that must not be overlooked:

- Chinese words are written, "Where ever you go...You go in Peace".
- The Butterfly hatch, portholes and windows with curtains fill the salon with daylight during the daytime hours.
- Enjoy the Oil Lamps OR the LED lighting.
- Full cushioned bench with storage compartments.
- Behind the back rest is the well hidden liquor cabinet.
- 17" Samsung TV flatscreen .
- Bluetooth - Pandora CD player

- Side table with three drawers and one cabinet
- Magic Chef Microwave
- U-shape seating around the teak convertible table, seating 4-6 people.
- Small wood burning unit attached to forward bulkhead, Newport by Dickenson
- Nav station and full length sleeping bench with top opening desk, VHF, Inverter and Switch Panel

BON VOYAGE 1977 CT 41 Master Stateroom

Master Stateroom has elaborate Teak detail:

- Large opening hatch over bed
- Three opening portholes
- Oversized V-Berth
- Wardrobe Armor with two hanging lockers and six drawers
- Oil Lamp
- LED lighting
- Port and Stbd shelves

BON VOYAGE 1977 CT 41 MASTER HEAD

- Vacu-Flush Toilet
- Cabinet with mirror
- Wall mirror over sink
- Two Large double door cabinets
- Sink and counter
- Two Opening port holes
- Standup shower with Teak grate and shower curtain

BON VOYAGE 1977 CT 41 COCKPIT

BON VOYAGE with her classic nautical wheel, has a center cockpit that seats six on the generous NEW seat cushions (01/18) making any voyage a comfortable one. The Steering Pedestal has full electronics.

- Magna Grill
- Three natural gas tanks
- Hand Tiller
- Three compartments, two in floor and one in port bench
- NEW canvas dodger cover (01/18)

BON VOYAGE 1977 CT 41 ELECTRONICS

- Chart Plotter, Raymarine E80
- Wind Indicator, Raymarine
- Depth, Raymarine ST 60+ digital
- Auto-pilot ST 6002 & CPT, Raymarine ST 6002 & CPT
- Radar, Raytheon SL70, 24" - 24 mile
- VHF, Icom IC M-504

BON VOYAGE 1977 CT 41 DECK

BON VOYAGE has the classic beautiful lines you would expect for this 1977 Ketch.

- The teak decks in good condition.
- The Inmar Inflatable with aluminum bottom
- Dinghy Davits
- Mercury 15Hp w/harness
- NEW Traditional Bow Pulpit (01/18)
- NEW LED Tri lights
- NEW LED Transom lights
- Updated Two Aluminum Masts (01/18)
- NEW Rigging (01/18)
- Updated Winches, Harken (01/18)
- NEW Sail Cover (01/18)
- NEW Butterfly hatch cover (01/18)
- NEW Lazy Jacks (01/18)
- Three spare sails, Spinnaker, Mizzen, Main
- Engine oil and filter changed
- Fuel filter changed

BON VOYAGE 1977 ct 41 ELECTRICAL & PLUMBING

- Portable Air Conditioning, 12,500 BTU Flagship
- Fischer Panda 5.0 KW Generator
- Batteries 2-8D Marine HD
- 12 Volt on fuses and breakers
- 120V-30 amp system
- Water Heater Seaward 6 gallon electric

BON VOYAGE 1977 CT 41 MECHANICAL

S-Isuzu 41-3 Serial #UNK-100 hrs SMOH Fresh water cooling Engine oil and filter changed (01/18) Fuel filter changed (01/18) Transmission, Borg Warner Reduction 2.50:1 Shaft - S/S Propeller - Three blade bronze

BON VOYAGE 1977 CT 41 Tankage

Fuel tank - 150 gallons Water tank - 55 gallons Sanitation System - Vacu-Flush system Holding Tank

BON VOYAGE 1977 CT 41 Anchoring and Safety

Safety Equipment:

- Two anchors
- Windlass
- Fire Extinguishers -5 ABC, size 1 dry
- PDF's - 20 Type II, 2 Type III, and 2 Type IV
- Flare kit
- CO & smoke detector
- Handheld Horn
- Bilge Pump - 3500 GPH Rule with auto and alarm

BON VOYAGE 1977 CT 41 UPGRADES

Work completed January 2018

- NEW Traditional Bow Pulpit
- NEW LED Tri lights
- NEW LED Transom lights
- NEW Two Furler Masts
- NEW Rigging
- NEW Winches, Harken
- NEW Sail Cover
- NEW Butterfly hatch cover
- NEW Lazy Jacks
- The teak decks in good condition.
- NEW canvas dodger cover

- NEW bottom paint, Two coats Trinidad paint
- Zincs replaced
- Cutlass bearing replaced

Additional Units Included

INMAR 320-TS

Исключения

При продаже яхты исключаются личные вещи владельца.

Отказ от ответственности

Компания предоставляет описание судна или яхты добросовестно, но не может гарантировать точность этой информации, а также не ручается за техническое состояние. Покупатель должен проинструктировать своих агентов или оценщиков исследовать представленную информацию более подробно, по собственному желанию. Продажа судна или яхты, изменение цены или снятие с продажи будет происходить без предварительного уведомления.

ФОТОГРАФИИ

(2) BON VOYAGE 1977 CT 41 Cockpit



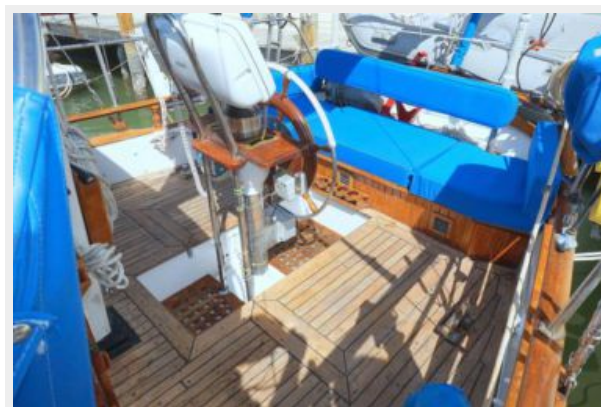
(3) BON VOYAGE 1977 CT 41 Port Bow



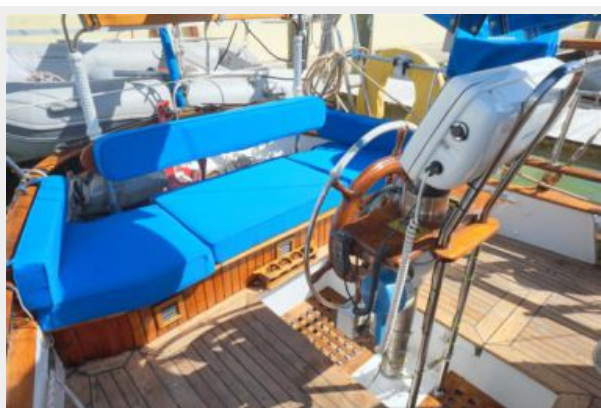
(4) BON VOYAGE 1977 CT 41 Dodger



(5) BON VOYAGE 1977 CT 41 Cockpit Seating



(6) BON VOYAGE 1977 CT 41 Cockpit Aft



(7) BON VOYAGE 1977 CT 41 Helm



(8) BON VOYAGE 1977 CT 41 Helm Instruments



(9) BON VOYAGE 1977 CT 41 Magnetic Compass



(10) BON VOYAGE 1977 CT 41 Cockpit to Port



(11) BON VOYAGE 1977 CT 41 Cockpit to Stbd



(12) BON VOYAGE 1977 CT 41 Belaying Pins



(13) BON VOYAGE 1977 CT 41 Stbd Side Deck



(14) BON VOYAGE 1977 CT 41 Foredeck



(15) BON VOYAGE 1977 CT 41 Windlass



(16) BON VOYAGE 1977 CT 41 Bow Pulpit



(17) BON VOYAGE 1977 CT 41 Foredeck Aft



**(18) BON VOYAGE 1977 CT 41 Belaying
Pins Port Side**



**(19) BON VOYAGE 1977 CT 41 Stbd
Sidedeck Aft**



(20) BON VOYAGE 1977 CT 41 Port Sidedeck Aft



(21) BON VOYAGE 1977 CT 41 Companionway



(22) BON VOYAGE 1977 CT 41 Interior Fwd



(23) BON VOYAGE 1977 CT 41 Interior Port Side



(24) BON VOYAGE 1977 CT 41 Interior Stbd



(25) BON VOYAGE 1977 CT 41 Galley



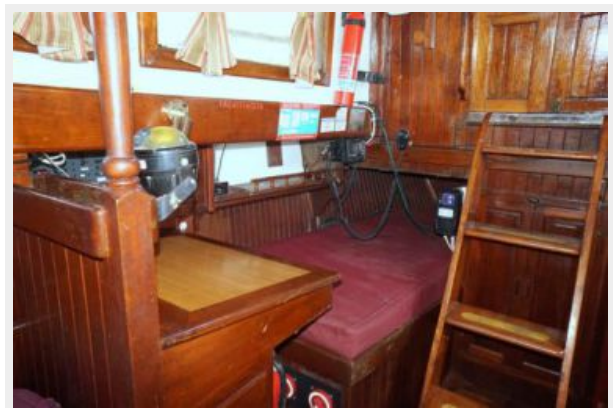
(26) BON VOYAGE 1977 CT 41 Galley Range (27) BON VOYAGE 1977 CT 41 Galley to Port



(28) BON VOYAGE 1977 CT 41 Nav Station



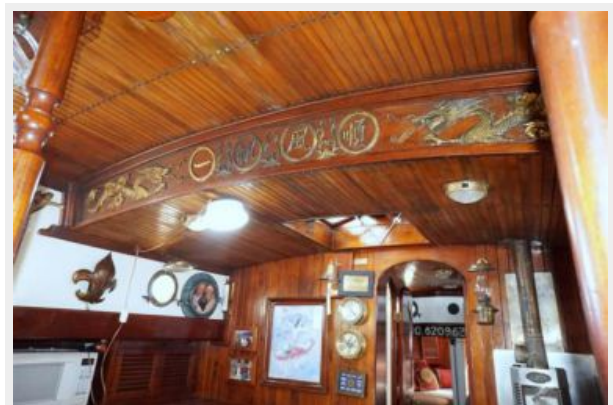
(29) BON VOYAGE 1977 CT 41 Nav Station to Stbd



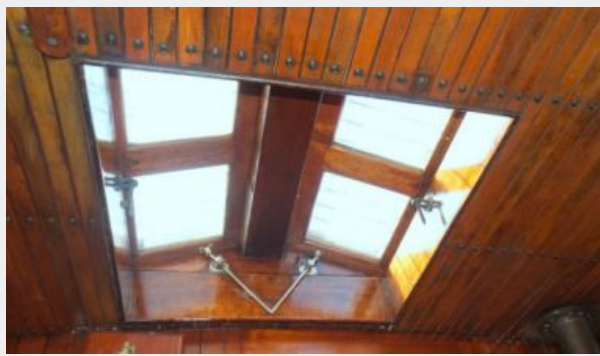
(30) BON VOYAGE 1977 CT 41 Woodstove



(31) BON VOYAGE 1977 CT 41 Where ever you go...You go in Peace



(32) BON VOYAGE 1977 CT 41 Butterfly Hatch



(33) BON VOYAGE 1977 CT 41 Settee



(34) BON VOYAGE 1977 CT 41 Seating to Stbd



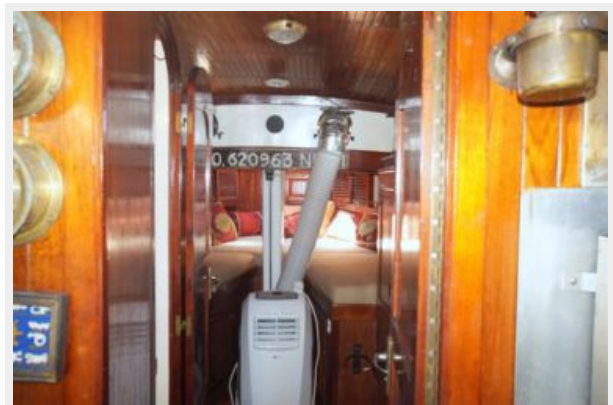
(35) BON VOYAGE 1977 CT 41 Beverage Storage



(36) BON VOYAGE 1977 CT 41 Woodstove to Stbd



(37) BON VOYAGE 1977 CT 41 Portable Air Conditioning



(38) BON VOYAGE 1977 CT 41 V-Berth



(39) BON VOYAGE 1977 CT 41 V-Berth to Port



(40) BON VOYAGE 1977 CT 41 V-Berth to Stbd



(41) BON VOYAGE 1977 CT 41 V-Berth Storage



(42) BON VOYAGE 1977 CT 41 Head to Port



(43) BON VOYAGE 1977 CT 41 Vacu-flush Toilet



(44) BON VOYAGE 1977 CT 41 Stand-alone Shower



(45) BON VOYAGE 1977 CT 41 Sole



(46) BON VOYAGE 1977 CT 41 Interior Af



(47) BON VOYAGE 1977 CT 41 Isuzu Diesel



(49) BON VOYAGE 1977 CT 41 Dinghy



(50) BON VOYAGE 1977 CT 41 Mercury 15Hp



(51) BON VOYAGE 1977 CT 41 Stern



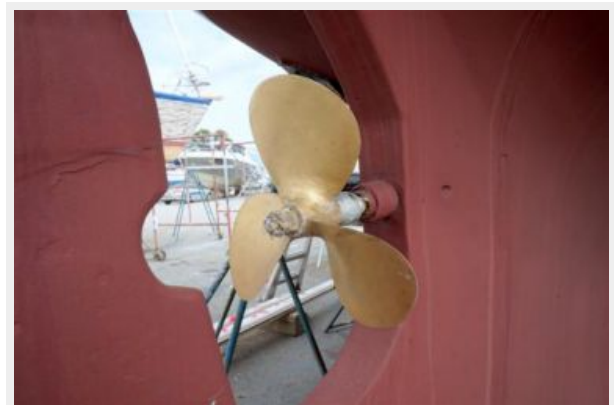
(52) BON VOYAGE 1977 CT 41 Bow Pulpit Support



(53) BON VOYAGE 1977 CT 41 Full Keel



(54) BON VOYAGE 1977 CT 41 3-Blade Fixed Prop



КОНТАКТЫ

Андрей Шестаков (Andrey Shestakov) – ведущий яхтенный брокер отдела продаж яхт и судов компании Shestakov Yacht Sales Inc. Официальный представитель Shestakov Yacht Sales Inc. для русскоговорящих клиентов в центральном офисе компании в Майами/Форт Лодердейл/Флорида/США.

Контактная информация

Email: andrey@shestakovyachtsales.com

Web: shestakovyachtsales.com

Телефоны

Краснодарский край: **+7(918)465-66-44**

США, Майами, Флорида: **+1(954)274-4435**

Время работы

Понедельник – Суббота: **9:00 - 21:00**
EDT

Воскресенье: **Закрито**

Адрес



Harbour Towne Marina, 850 NE 3rd St,
STE 213, Dania, FL 33004