

NEW 2018 PRESTIGE 680 FLYBRIDGE PR18 — PRESTIGE



Builder: PRESTIGE

Year Built: 2018

Price: PRICE ON APPLICATION

Location: United States

LOA: 68' 0" (20.73m)

Beam: 17' 6" (5.33m)

Max Draft: 5' 2" (1.57m)

Cruise Speed: 25 Kts. (29 MPH)

Max Speed: 30 Kts. (35 MPH)

Our experienced yacht broker, Andrey Shestakov, will help you choose and buy a yacht that best suits your needs **NEW 2018 Prestige 680 Flybridge PR18WA-027 — PRESTIGE** from our catalogue. Presently, at Shestakov Yacht Sales Inc., we have a wide variety of yachts available on our sale's list. We also work in close contact with all the big yacht manufacturers from all over the world.

If you would like to buy a yacht **NEW 2018 Prestige 680 Flybridge PR18WA-027 — PRESTIGE** or would like help answering any questions concerning purchasing, selling or chartering a yacht, please call **+1(954)274-4435**

TABLE OF CONTENTS

TABLE OF CONTENTS	2
SPECIFICATIONS	5
Overview	5
Basic Information	5
Dimensions	5
Speed, Capacities and Weight	5
Accommodations	6
Hull and Deck Information	6
DETAILED INFORMATION	7
Standard Features	7
Optional Equipment	7
Exclusions	8
Disclaimer	8
PHOTOS	9
IMG_0535	9
IMG_0597	9
IMG_0600	9
IMG_0577	9
IMG_0594	10
IMG_0596	10
IMG_0589	10
IMG_0588	10
IMG_0587	10
IMG_0598	10
IMG_0574	11
IMG_0585	11
IMG_0580	11
IMG_0582	11

IMG_0584	11
IMG_0601	11
IMG_0608	12
IMG_0599	12
IMG_0602	12
IMG_0609	12
IMG_0603	13
IMG_0615	13
IMG_0604	13
IMG_0606	13
IMG_0605	14
IMG_0613	14
IMG_0614	14
IMG_0611	14
IMG_0547	15
IMG_0616	15
IMG_0593	15
IMG_0592	15
IMG_0561	15
IMG_0565	15
IMG_0568	16
IMG_0549	16
IMG_0551	16
IMG_0556	16
IMG_0571	16
IMG_0564	16
IMG_0563	17
IMG_0560	17
IMG_0569	17

IMG_0558	17
IMG_0537	17
IMG_0570	17
IMG_0559	18
IMG_0566	18
IMG_0555	18
IMG_0567	18
IMG_0553	19
IMG_0573	19
IMG_0552	19
IMG_0554	19
IMG_0562	19
IMG_0572	19
IMG_0538	20
IMG_0539	20
IMG_0540	20
IMG_0541	20
IMG_0542	20
IMG_0543	20
IMG_0534	21
IMG_0544	21
IMG_0536	21
CONTACTS	22
Contact details	22
Telephones	22
Office hours	22
Address	22

SPECIFICATIONS

Overview

This 680 flybridge features an interior design synonymous with light, space, ease of movement and privacy. With bold, timeless lines and high-quality materials, fit and finish, the PRESTIGE 680 offers the same technical attributes found throughout the line, while also benefiting from the latest innovations. Specifically designed to be equipped with an IPS 1200 engine, the PRESTIGE 680 offers enjoyable, comfortable cruising.

Basic Information

Sub Category: Cruiser

Model Year: 2018

Year Built: 2018

Country: United States

Fly Bridge: Yes

Cockpit: Yes

Dimensions

LOA: 68' 0" (20.73m)

Beam: 17' 6" (5.33m)

Max Draft: 5' 2" (1.57m)

MFG Length: 70' 4" (21.44m)

Speed, Capacities and Weight

Cruise Speed: 25 Kts. (29 MPH)

Cruise Speed Range: 303

Max Speed: 30 Kts. (35 MPH)

Displacement: 65698 Pounds

Gross Tonnage: 32849 Pounds

Water Capacity: 243 Gallons

Holding Tank: 68 Gallons

Fuel Capacity: 911 Gallons

Accommodations

Total Cabins: 3

Sleeps: 8

Crew Cabin: 1

Crew Sleeps: 2

Crew Heads: 1

Hull and Deck Information

Hull Material: Fiberglass

DETAILED INFORMATION

Standard Features

- Air Climate Control, Cockpit (BTU)
- Automatic Fire Extinguisher System
- Battery Charging System
- Bottom Paint, Anti-fouling
- Cabin Carpet - Accommodations Level
- Carbon Monoxide Detectors
- Centrifuge Head (2) with Holding Tank
- Cockpit Seating
- Cockpit Wet Bar
- Cockpit Carpet
- Cockpit Shower
- Compass
- Foredeck Chase Lounge and Storage
- Grill, Cockpit - Electric
- Generator Low CO Gas 15.5 Kw, with Sound Shield
- Hardtop, Coupe, with Power Sunroof
- Hot Water System, 20 Gallon/76 Liter
- Patio Door with Power Window
- Mattress (es), Therapeutic Foam
- Microwave/Convection Oven
- Portlights - Opening with Hull Glass Windows
- Seawater Strainers
- Spotlight, Remote Control
- Stove, Electric
- Blackened Oak and Tay Oak
- Swim Platform with Boarding Ladder
- Windlass (Maxwell VWCLP1200)

Optional Equipment

- White Hull IPS
- Seat, Aft FC, Pearl, white with Black
- 28" TV/DVD, Forward Stateroom
- Batteries
- Central Vacuum System 120v
- Head Centrifuge, with Overboard Discharge
- 24" TV, TSR, Charcoal
- Underwater, Lighting

- Joystick Remote Docking Station
- Ice Maker 120v - Cockpit
- Swim Platform, Extended with Hydraulic Lift
- Shade, Foredeck
- Matt, Woven, Cockpit, Oyster
- Algae-X Fuel Conditioner System
- Towel Package
- Washer/Dryer
- Glass Cockpit Electronics Package
- Field Set-Up
- Generator, 16Kw, with Sound Shield 240V/60Hz
- Interior Color, Neutral
- Interior Seating, Chrome Tweed
- Interior Wood, Charcoal Oak
- Chase Lounge - Foredeck, Pearl White
- Dockside, US with Isolation Transformer

Exclusions

Owner's personal belongings.

Disclaimer

The Company offers the details of this vessel or yacht in good faith but cannot guarantee or warrant the accuracy of this information nor warrant the condition of the vessel. A buyer should instruct his representatives, agents, or his surveyors, to investigate such details as the buyer desires validated. This vessel or yacht is offered subject to prior sale, price change, or withdrawal without notice.

PHOTOS

IMG_0535



IMG_0597



IMG_0600

IMG_0577



IMG_0594



IMG_0596



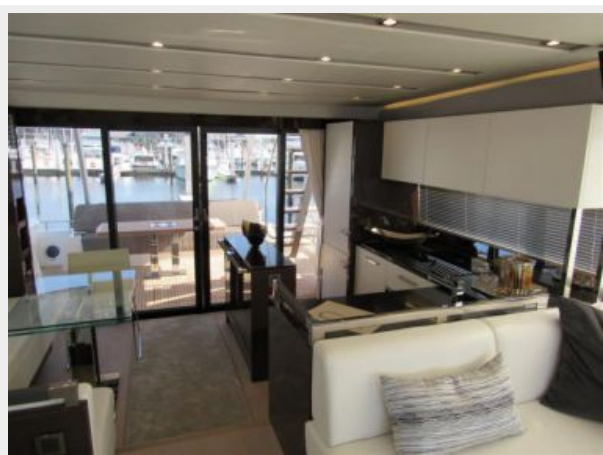
IMG_0589



IMG_0588



IMG_0587



IMG_0598



IMG_0574



IMG_0585



IMG_0580



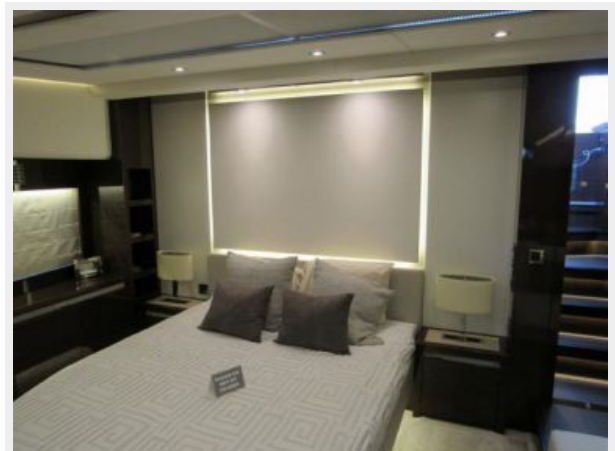
IMG_0582



IMG_0584



IMG_0601



IMG_0599



IMG_0608



IMG_0602



IMG_0609



IMG_0603



IMG_0615



IMG_0604



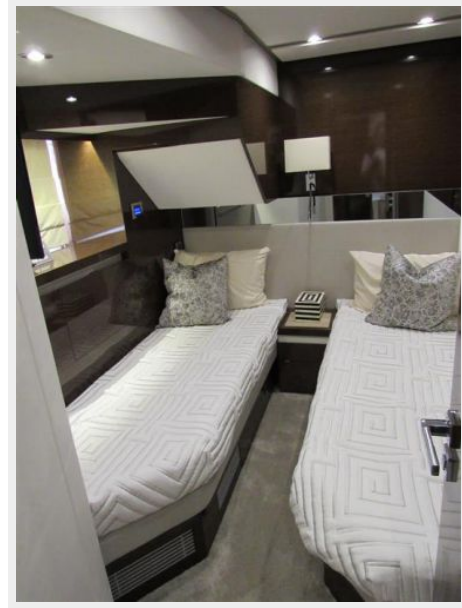
IMG_0606



IMG_0605



IMG_0613



IMG_0614



IMG_0611



IMG_0568



IMG_0549



IMG_0551



IMG_0556



IMG_0571



IMG_0564



IMG_0563



IMG_0560



IMG_0569



IMG_0558



IMG_0537



IMG_0570



IMG_0559



IMG_0566



IMG_0555



IMG_0567



IMG_0553



IMG_0573



IMG_0552



IMG_0554



IMG_0562



IMG_0572



IMG_0538



IMG_0539



IMG_0540



IMG_0541



IMG_0542



IMG_0543



IMG_0544



IMG_0534



IMG_0536



CONTACTS

Andrey Shestakov, leading yacht broker of the sales department of Shestakov Yacht Sales Inc. Shestakov Yacht Sales Inc., the official representative of the Miami/Fort Lauderdale FL headquarters.

Contact details

Email: andrey@shestakovyachtsales.com

Web: shestakovyachtsales.com/en/

Telephones

USA: +1(954)274-4435

Office hours

Monday – Saturday: **9:00 - 21:00** EDT

Sunday: **closed**

Address



Harbour Towne Marina, 850 NE 3rd St,
STE 213, Dania, FL 33004