

# LOW HOURS - NEVER FISHED!! — BERTRAM



**Builder:** BERTRAM

**Year Built:** 2007

**Model:** Sport Yacht

**Price:** PRICE ON APPLICATION

**Location:** Italy

**LOA:** 63' 0" (19.20m)

**Beam:** 18' 1" (5.51m)

**Max Draft:** 5' 3" (1.60m)

**Cruise Speed:** 33 Kts. (38 MPH)

**Max Speed:** 38 Kts. (44 MPH)

Our experienced yacht broker, Andrey Shestakov, will help you choose and buy a yacht that best suits your needs **LOW HOURS - NEVER FISHED!! — BERTRAM** from our catalogue. Presently, at Shestakov Yacht Sales Inc., we have a wide variety of yachts available on our sale's list. We also work in close contact with all the big yacht manufacturers from all over the world.

If you would like to buy a yacht **LOW HOURS - NEVER FISHED!! — BERTRAM** or would like help answering any questions concerning purchasing, selling or chartering a yacht, please call **+1(954)274-4435**

# TABLE OF CONTENTS

TABLE OF CONTENTS	2
SPECIFICATIONS	7
Overview	7
Basic Information	7
Dimensions	7
Speed, Capacities and Weight	7
Accommodations	7
Hull and Deck Information	8
Engine Information	8
DETAILED INFORMATION	9
Description	9
Key Features	9
Cockpit	10
Flybridge	10
Main Salon	11
Galley	12
Master Stateroom	12
VIP Stateroom	13
Over Under Guest Stateroom	14
Aft Twin Guest Stateroom	14
Guest Companionway	15
Deck & Hull Equipment	15
Electrical	15
Engine Room	16
Remarks	17
Exclusions	17
Mechanical Disclaimer	17
Exclusions	17

Disclaimer	17
PHOTOS	18
Port Profile	18
Bow	18
Stern Swim Platform and Tender	18
Stern Passerelle	18
Swimplatform	18
Cockpit	18
Passerelle	19
Cockpit	19
Cockpit Table	19
Cockpit Teak Detail	19
Starboard Cockpit Windlass and Cleat	19
Port Cockpit Windlass and Cleat	19
Cockpit	20
Cockpit Baitwell and Sink	20
Cockpit Freezer	20
Carbon Fibre Bimini Painted White	20
Carbon Fibre Bimini Painted White	21
Main Salon Forward	21
Main Salon Aft	21
Main Salon Forward	21
Main Salon Aft	22
Main Salon Aft	22
Main Salon TV	22
Main Salon Surround Speakers	22
Main Salon Surround Speakers	22
Main Salon Details	22
Wine Cooler	23

---

Galley	23
Galley Refrigerated Drawers	23
Galley Refrigerated Drawers	23
Dining Settee	24
Galley Cooktop	24
Stairs to Guest Staterooms	24
Galley Storage	24
LCD TV	25
Starboard Aft Twin Guest Stateroom	25
Stateroom Airconditioning Controls	25
Starboard Aft Stateroom Ensuite Head	25
Starboard Forward Bunk Stateroom	26
Forward Stateroom	26
Forward Stateroom Detail	26
Forward Stateroom LCD TV	26
Forward Stateroom Ensuite Head	27
Port Stateroom	27
Port Stateroom LCD TV	27
Port Stateroom Under Bed Storage	27
Port Stateroom Detail	28
Port Stateroom Entertainment Equipment	28
Port Stateroom Ensuite Head	28
Port Stateroom Ensuite Head	28
Washer and Dryer	29
Cockpit to Flybridge Stairs	29
Cockpit to Flybridge Stairs	29
Flybridge Aft	29
Flybridge Aft	30
Flybridge Forward	30

---

---

Flybridge Helm	30
Flybridge Helm	30
Flybridge Helm	31
Flybridge Helm	31
Flybridge Switch Panel	31
Engine Hours 322	31
Autopilot	32
VHF Radio	32
Flybridge Helm Chairs	32
Flybridge Forward Seating and Table	32
Flybridge Seating Detail	33
Flybridge Sink and Refrigerator	33
Flybridge Seating Cushions	33
Bow	33
Anchor and Anchor Windlass	34
Anchor Locker and Chain	34
Starboard Side Detail	34
Bow Looking Aft	34
Entertainment Equipment	35
Distribution Panel	35
Distribution Panel	35
Generator	35
Generator Hours 309	35
Engine Room Camera	35
Engine Room Detail	36
Engine Room Battery Switch Panel	36
Dry Bilge Detail	36
Main Engines	36
Upgraded Exhaust Vibration Isolator	37

---

---

Upgraded Exhaust Vibration Isolator	37
Engine Hours	37
Upgraded Dripless Shaft Seals	37
Steering Locker Dry Bilge Detail	38
Upgraded Grey Water Pumps	38
Dry Bilge Detail	38
Upgraded Black Water Pump	38
Cockpit Storage Locker	39
Bilge Detail	39
Storage Locker	39
Swim Platform and Bottom Detail	39
Botom Detail	39
Upgraded LED Underwater Lights	39
Cockpit Evening Lights	40
Stored Indoors For Winter Seasons	40
Cockpit Evening Lights	40
<b>CONTACTS</b>	<b>41</b>
Contact details	41
Telephones	41
Office hours	41
Address	41

---

# SPECIFICATIONS

---

## Overview

---

## Basic Information

---

**Category:** Sport Yacht

**Sub Category:** Convertible

**Model Year:** 2007

**Year Built:** 2007

**Country:** Italy

## Dimensions

---

**LOA:** 63' 0" (19.20m)

**Beam:** 18' 1" (5.51m)

**Max Draft:** 5' 3" (1.60m)

## Speed, Capacities and Weight

---

**Cruise Speed:** 33 Kts. (38 MPH)

**Cruise Speed RPM:** 1850 Kts.

**Max Speed:** 38 Kts. (44 MPH)

**Displacement:** 95609 Pounds

**Water Capacity:** 251 Gallons

**Holding Tank:** 118 Gallons

**Fuel Capacity:** 1849 Gallons

## Accommodations

---

**Total Cabins:** 4

**Total Berths:** 6

**Total Heads:** 3

---

## Hull and Deck Information

---

**Hull Material:** Fiberglass

---

## Engine Information

---

**Engines:** 2

**Manufacturer:** MTU

**Model:** 16V 2000 M91

**Engine Type:** Inboard

**Fuel Type:** Diesel



---

# DETAILED INFORMATION

---

## Description

---

**DON'T MISS THIS UNIQUE OPPORTUNITY TO BUY A VERY LIGHTLY USED 63 BERTRAM CONVERTIBLE.** Without question the BEST OPTION on the market today! Flawless Styling and Quality Construction, Bertram has enjoyed a reputation for building spacious, comfortable, and solid Sportfish and you will enjoy true "Pride of Ownership" when you purchase a Bertram like this! This 4 Stateroom 3 head layout can comfortably accommodate up to 8 guests. Powered by 2000hp MTU 16V2000s with very low hours and excellent performance. This is a **RARE ONE OWNER BERTRAM THAT HAS NEVER BEEN FISHED.** This Bertram is lightly used and in excellent ready to cruise condition. If you are in the market for a Quality Bertram, Don't Let This Unique Option Slip By! She is easy to see 7 days a week. Schedule your appointment today.

### KEY FEATURES TO CONSIDER:

**RARE - ONE OWNER - NEVER FISHED 63' BERTRAM!! VERY LIGHTLY USED WITH ONLY 322 APPX HOURS!! 4 STATEROOM 3 HEAD LAYOUT!! UPGRADED 2000HP MTU 16V2000s!!**

**CUSTOM INTEGRATED SWIM PLATFORM FOR TENDER!!**

**CUSTOM OPACMARE PASSERELLE AND TENDER LIFT!!**

**WILLIAMS 385 JET TENDER WITH MPE 750 WEBER MOTOR!!**

**UPGRADED DRIPLESS SHAFT SEALS AND COMPLETELY DRY BILGES!! UPGRADED LED UNDERWATER LIGHTS!!**

**ALL INTERIOR CARPET UPGRADED TO WOOD FLOORS!! UPGRADED LARGER CUSTOM BLACK AND GREY WATER TANKS!!**

**TO MANY UNIQUE FEATURES TO LIST!!**

**THIS IS THE ABSOLUTE MOST UNIQUE BERTRAM 63 ON THE MARKET TODAY!!**

## Key Features

---

### KEY FEATURES TO CONSIDER:

**RARE - ONE OWNER - NEVER FISHED 63' BERTRAM!! VERY LIGHTLY USED WITH ONLY 322 APPX HOURS!! 4 STATEROOM 3 HEAD LAYOUT!! UPGRADED 2000HP MTU 16V2000s!!**

**CUSTOM INTEGRATED SWIM PLATFORM FOR TENDER!!**

**CUSTOM OPACMARE PASSERELLE AND TENDER LIFT!!**

**WILLIAMS 385 JET TENDER WITH MPE 750 WEBER MOTOR!!**

**UPGRADED DRIPLESS SHAFT SEALS AND COMPLETELY DRY BILGES!! UPGRADED LED UNDERWATER LIGHTS!!**

**ALL INTERIOR CARPET UPGRADED TO WOOD FLOORS!! UPGRADED LARGER CUSTOM BLACK AND GREY WATER TANKS!!**

**TO MANY UNIQUE FEATURES TO LIST!!**

**THIS IS THE ABSOLUTE MOST UNIQUE BERTRAM 63 ON THE MARKET TODAY!!**

---

## Cockpit

---

This 63' Bertram Convertible has a very spacious cockpit that harbors an arsenal of tackle storage cabinets. Everything a dedicated saltwater angler needs. In addition, ample rod storage throughout the boat means that owners can be ready for any fishing situation. This Bertram has the everything you need to battle that tournament winner or for relaxing aft deck entertaining.

- Opacmare Passerelle and Tender Davit
- Transom fish box plumbed to Eskimo Ice Machine
- Cockpit grill
- Tuna Door in cockpit
- Custom swim platform
- Two stainless cockpit freezers
- Cockpit fish box plumbed to macerator
- Cockpit tackle drawers
- Cockpit stereo speakers
- 24v overhead lighting
- Spiral staircase to bridge
- Teak decking with ice box beneath step
- Fresh & salt water wash downs

---

## Flybridge

---

Every inch of this Bertram is built to deliver point-the-bow-and-go simplicity and precision-rigged performance. Obsessive commitments to quality, safety and customer satisfaction are revealed in the countless design and manufacturing details that make for ease of operation and unmatched comfort. The centerline position of the helm enhances that rare combination of visibility and control that only running a Bertram can deliver. Your input through the wheel and throttle's come together as powerful, intuitive grace and you feel more connected to the boat and the hull's interaction with the water.

- Full EZ2CY Enclosure
- U Shaped Bench Seats with Custom Table
- Storage below Helm Seats
- The Helm is well thought out and constructed with no visual restrictions to the operator
- Steering System Hydraulic
- MTU Digital Engine Display's
- Molded Fiberglass Hardtop with Recessed Overhead Lights
- Audio Speakers
- VHF Radio
- Radar
- Raymarine Chartplotter
- Digital Sounder
- Auto Pilot
- Ritchie Compass
- Helm air conditioning
- Rocket Launchers
- Sink & Refrigerated Box
- Rod locker
- Electric pop-up dash with electronics
- Murray Bros. Ladder Back helm chairs

---

## Main Salon

---

As you enter the salon, the blend of beautiful Cherry Wood combined with rich fabrics creates a balanced atmosphere of luxury and comfort. The galley and dinette are on the same level as the salon and add to the functionality and flow of the vessel's accommodations.

- NEW Custom Wood Floors In Aft Salon
- High Gloss Cherry Cabinetry
- 46" Samsung Flatscreen TV
- KVH Sat TV Receiver
- UPS Backup Power System For KVH and Stereo
- 230v, 24v, 12v, Circuit Breaker Panels
- Generator Remote Start Panel
- Fresh water Level Gauge
- Bilge Pump Controls
- Bose Surround Sound System
- AM/FM/CD/DVD Stereo
- Scottsman Ice Maker
- Stainless Sink Basin w/Bar Storage Beneath
- Teak Liquor Rack
- White Cashmere Granite Countertops
- Decorative Coffee Table

- Decorative Throw Pillows
- Air Conditioning w/Digital SMX Control
- Wooden Blinds In Pockets
- Whisperwall Headliner
- High Gloss Cherry Cabinetry
- Overhear Hand Rail
- Decorative Wall Mounted Lamp
- 24v Recessed Lighting On Dimmers
- 24v Indirect Lighting
- 230v Outlets
- Ultra Leather L Shaped Couch w/Storage
- Large Pop Out Window In Aft Bulkhead
- Companionway Door To Cockpit

---

## Galley

---

This fully furnished galley offers all the comforts of home. A perfect design, this galley is sure to satisfy everyone that comes aboard!

- High Gloss Cherry Cabinetry
- 4 SubZero Frig/Freezer Drawers
- 4 Burner Kenyon Electric Cook Top With Sliding Granite Cover
- 24v Recessed Lighting
- 24v Indirect Lighting
- White Cashmere Granite Countertops
- Overhead Rod Storage Locker
- Dish Washer
- GE Profile Microwave/Convection Oven
- Pull Out Storage Drawers
- Dishware and Silverware
- Twin Underhung Sink Basins
- Decorative Faucet
- Hot And Cold Pressure Water
- Trash Receptacle
- Tinted Glass Windows w/Wooden Blinds
- Air Conditioning
- Amtico Sole
- 230v Outlets
- Hand Held Fire Extinguisher

---

## Master Stateroom

---

The elegance comfort and special attention to detail of the yacht are continued in the master

---

The elegance, comfort and special attention to detail of the yacht are contained in the master cabin. A double island berth is easily accessible from either side. A spacious wardrobe provides ample storage for clothing and has a full length mirror inside the door. The private ensuite has plenty of room while onboard with a full shower. A perfect nook for lazy days at anchor!

- Queen Berth with Large Storage Underneath
- Decorative Bed Cover, Pillow Shams, and Throw Pillows
- Carpet
- Twin Night Tables
- Port and Stbd. Cedar Lined Hanging Lockers
- Entertainment Center Locker
- Pull Out Drawers
- Air Conditioning
- Storage Cabinets
- Whisperwall Headliner
- High Gloss Cherry Cabinetry
- Opening Hatch w/Screen and Blackout
- 230v Outlets
- 24v Recessed Lighting
- 24v Indirect Lighting
- Bulkhead Mounted Reading Lamps
- Large Mirror On Aft Bulkhead
- Flat Screen TV
- AM/FM/CD Stereo and Speakers

#### Ensuite Private Head:

- Tecma Electric Head
- 24v Recessed Lighting
- 230v Outlets
- Granite Countertop
- High Gloss Cherry Cabinetry
- Underhung Sink Basin
- 6 Door Mirrored Vanity
- Storage Cabinets
- Hot and Cold Pressure Water
- Amtico Teak and Holly Sole
- Mirrored Ceiling
- Air Conditioning
- Extractor Fan
- Opening Hatch w/Screen and Blackout
- Stall Shower w/Bifold Door and Overhead Light

---

## VIP Stateroom

---

---

The forward VIP Stateroom features a double berth, side tables and A/C control. Access to the private ensuite head is made inside the cabin.

- Queen Island berth
- Storage under berth
- Air conditioning
- Closets with mirror and storage
- Bed spreads with coordinated shams and accent pillows

Ensuite Private Head:

- Tecma Electric Head
- 24v Recessed Lighting
- 230v Outlets
- Granite Countertop
- High Gloss Cherry Cabinetry
- Underhung Sink Basin
- 6 Door Mirrored Vanity
- Storage Cabinets
- Hot and Cold Pressure Water
- Amtico Teak and Holly Sole
- Mirrored Ceiling
- Air Conditioning
- Extractor Fan
- Opening Hatch w/Screen and Blackout
- Stall Shower w/Bifold Door and Overhead Light

## Over Under Guest Stateroom

---

The Starboard Forward Guest Stateroom features an over/under berth, night table and A/C controls.

- Upper and lower single berths
- Storage under lower berth
- Air conditioning
- Closet with mirror and storage
- Bed spreads with coordinated shams and accent pillows

## Aft Twin Guest Stateroom

---

The Starboard Aft Guest Stateroom features Twin Berths, night table and A/C controls. Access to the head is made inside the cabin.

- Twin side by side single berths
- Storage under lower berth
- Air conditioning
- Closet with mirror and storage
- Bed spreads with coordinated shams and accent pillows

---

## Guest Companionway

---

- Full Size Samsung Washer and Dryer

---

## Deck & Hull Equipment

---

Versatile and seaworthy, this bulletproof 63' Bertram has been equipped with everything you need to safely cruise and fish anywhere. Easy access to the bow from either port or starboard side with a forward bow pulpit.

- 24v Running Lights
- 24v Trim Tabs
- Bow Pulpit w/Anchor Roller
- 24v Lewmar Electric Windlass
- 50 Kilo Delta Anchor with 110 meters (328') of chain
- 5 Opening Deck Hatches w/Screens and Blackouts
- Nonskid Decks
- Stainless Cleats and Chocks
- Dock lines and Fenders
- LED Underwater Lights (Upgrade)
- Fiberglass Hard Top w/Molded Running Lights
- Fore And Aft Facing Flood Lights
- Whip VHF Antennas
- Trumpet Horn
- Molded Cockpit Steps w/Courtesy Lighting
- Side Power Bow Thruster

---

## Electrical

---

- (2) 23 KW 230V 50HTZ Kohler Generators In Sound Shields
- Shore Power Converter 120/220/380 Volt
- (2) 50 Amp Shore Power Cords On Glendenning Cable Masters
- 230v Hot Water Heater
- 230v Malber Washer and Dryer 110v AC Compressors
- 24v Rule Bilge Pumps w/Float Switches

- Charles Iso Boost Power Transformer
- Mastervolt Battery Charger - New 2016
- (4) New 2016 12v 8D Batteries (House)
- (6) New 2016 Odyssey 12v Start Batteries (Engine)
- (2) New 2016 12v Batteries (Generators)
- 24v Blowers
- 24v Trim Tabs
- 24v Macerator Pump For Fish Box
- 230v Outlets
- 24v Interior Lighting
- 240v Head Hunter Fresh Water Pump
- 24v Tecma Electric Heads
- 24v Horn
- 24v Running Lights
- 12v Outlets for electric Rods In Cockpit and Fly

---

## Engine Room

---

Easy access from the cockpit, this well laid out stand up engine room has plenty of room for routine maintenance and spare parts. The engine room on the 60 Bertram is an absolute amazing use of space!

- Twin MTU 16V 2000 - 322 Approx. Hours
- Twin Kohler 23KW 230V 50 HTZ Generators In Sound Boxes - 309 Approx. Hours
- 1000 Series Racor Filters on Manifolds (Mains)
- Valved Water Pickups For Emergency Bilge Pumps Off Mains
- 500 Series Racor Filters (Gens)
- (2) Glendenning Cable Masters
- Delta T Air Intake System
- All New Plumbing and Manifold For AC Cooling Water System (Upgrade)
- Bulkhead Mounted Coolant Overflow Tanks
- (4) 24v Blowers (All New) (Upgrade)
- 24v Lights
- 230v Lights
- ZF Transmissions
- Trolling Valves
- Dometic Eskimo Ice maker
- Sea Strainers
- Engine Room Camera
- Overhead Hand Rail
- Full Beam Fiberglass Fuel Tank w/Sight Gauge and Clean Out (1850 gals)
- Rule 24v Bilge Pumps w/Float Switches
- Marche AC Water Circulating Pump and Back Up Pump (Upgrade)



- Hot Water Heater
- Dripless Shaft Seals
- FCI 1200GPD Watermaker
- Reverso Oil Change Pump w/Manifold
- Fireboy FV241 Fire System (Recertified)
- Hydraulic Trim Pump and Reservoir
- Battery Boxes
- AC Compressors and Pumps
- Fresh Water Pump

---

## Remarks

---

This by far the Best Bertram on the market today! Loaded with custom features unlike anything else on the market this Bertram has everything you need to cruise or fish with your family! Absolutely Turn Key Condition - this is the most unique opportunity on the market for a 63' Bertram Convertible That Has Never Been Fished. It won't last long and is easy to see 7 days a week. Schedule your appointment today.

---

## Exclusions

---

Owners personal effects. A list will be provided upon request.

---

## Mechanical Disclaimer

---

Engine hours are a representation of what the listing broker has been supplied by the owner and/or actual reading of the engine hour meters. The broker cannot guarantee the true hours. It is the responsibility of the purchaser to verify engine hours, major overhauls and all other representations noted on the listing brochure.

---

## Exclusions

---

Owner's personal belongings.

---

## Disclaimer

---

The Company offers the details of this vessel or yacht in good faith but cannot guarantee or warrant the accuracy of this information nor warrant the condition of the vessel. A buyer should instruct his representatives, agents, or his surveyors, to investigate such details as the buyer desires validated. This vessel or yacht is offered subject to prior sale, price change, or withdrawal without notice.

# PHOTOS

**Port Profile**



**Bow**



**Stern Swim Platform and Tender**



**Stern Passerelle**



**Swimplatform**



**Cockpit**



**Cockpit**



**Passerelle**



**Cockpit Table**



**Cockpit Teak Detail**



**Starboard Cockpit Windlass and Cleat**



**Port Cockpit Windlass and Cleat**





**Cockpit**



**Cockpit Baitwell and Sink**



**Cockpit Freezer**



**Carbon Fibre Bimini Painted White**



**Carbon Fibre Bimini Painted White**



**Main Salon Forward**



**Main Salon Forward**



**Main Salon Aft**



**Main Salon Aft**



**Main Salon Aft**



**Main Salon TV**



**Main Salon Surround Speakers**



**Main Salon Surround Speakers**



**Main Salon Details**





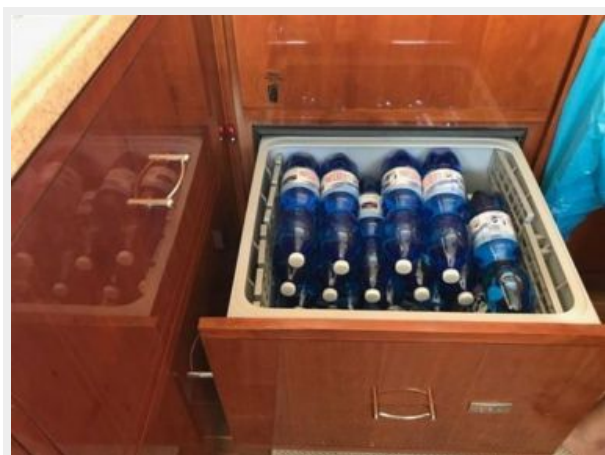
**Galley**



**Wine Cooler**



**Galley Refrigerated Drawers**



**Galley Refrigerated Drawers**



**Galley Cooktop**



**Dining Settee**



**Galley Storage**



**Stairs to Guest Staterooms**





**Starboard Aft Twin Guest Stateroom**



**LCD TV**



**Stateroom Airconditioning Controls**



**Starboard Aft Stateroom Ensuite Head**



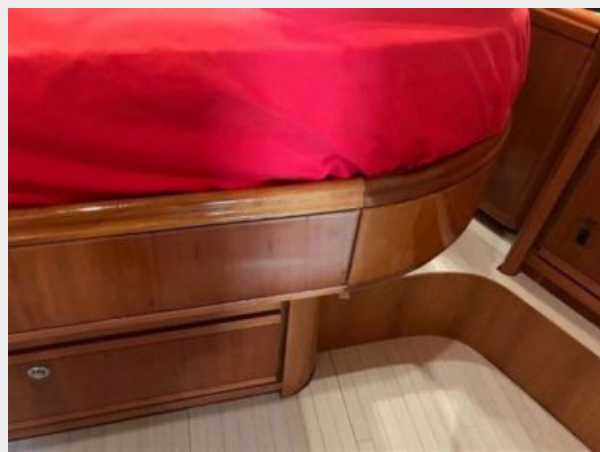
### Starboard Forward Bunk Stateroom



### Forward Stateroom



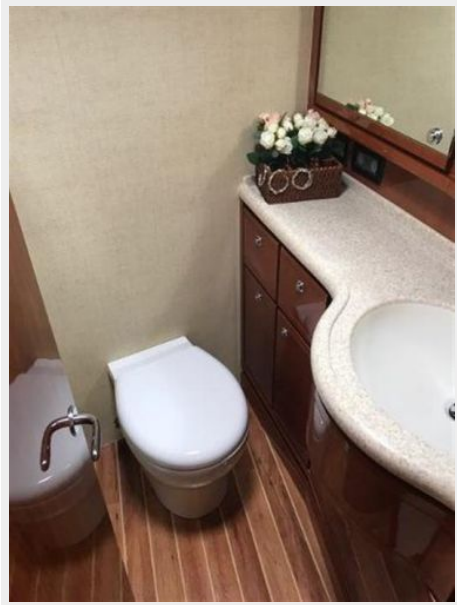
### Forward Stateroom Detail



### Forward Stateroom LCD TV



### Forward Stateroom Ensuite Head



### Port Stateroom



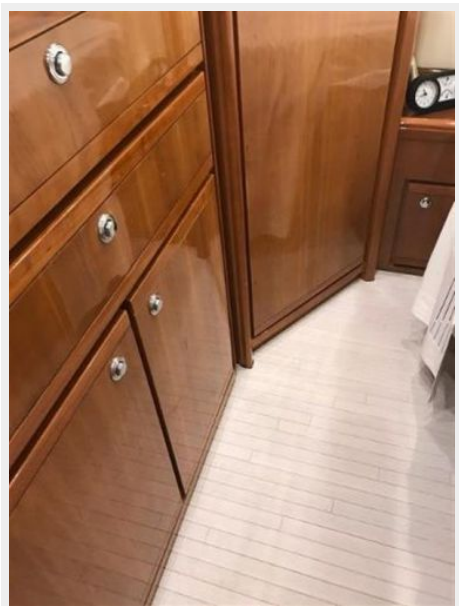
### Port Stateroom LCD TV



### Port Stateroom Under Bed Storage



### Port Stateroom Detail



### Port Stateroom Entertainment Equipment



### Port Stateroom Ensuite Head



### Port Stateroom Ensuite Head





**Washer and Dryer**



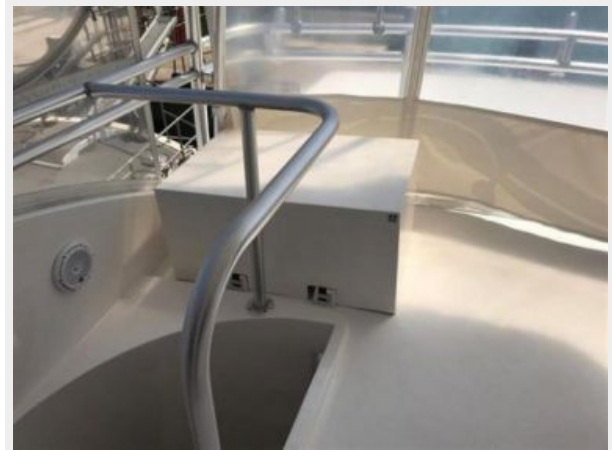
**Cockpit to Flybridge Stairs**



**Cockpit to Flybridge Stairs**



**Flybridge Aft**



**Flybridge Aft**



**Flybridge Forward**



**Flybridge Helm**



**Flybridge Helm**



### Flybridge Helm



### Flybridge Helm



### Flybridge Switch Panel



### Engine Hours 322





**Autopilot**



**VHF Radio**



**Flybridge Helm Chairs**



**Flybridge Forward Seating and Table**





### Flybridge Seating Detail



### Flybridge Sink and Refrigerator



### Flybridge Seating Cushions



### Bow



**Anchor and Anchor Windlass**



**Anchor Locker and Chain**



**Bow Looking Aft**



**Starboard Side Detail**



**Entertainment Equipment**



**Distribution Panel**



**Distribution Panel**



**Generator**



**Generator Hours 309**



**Engine Room Camera**





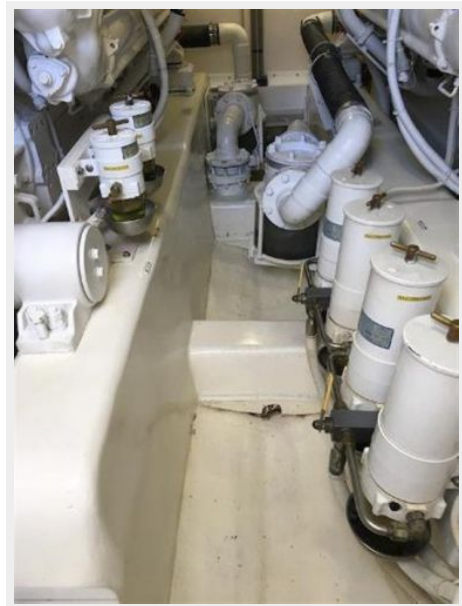
**Engine Room Detail**



**Engine Room Battery Switch Panel**



**Dry Bilge Detail**



**Main Engines**



### Upgraded Exhaust Vibration Isolator

### Upgraded Exhaust Vibration Isolator



### Engine Hours



### Upgraded Dripless Shaft Seals



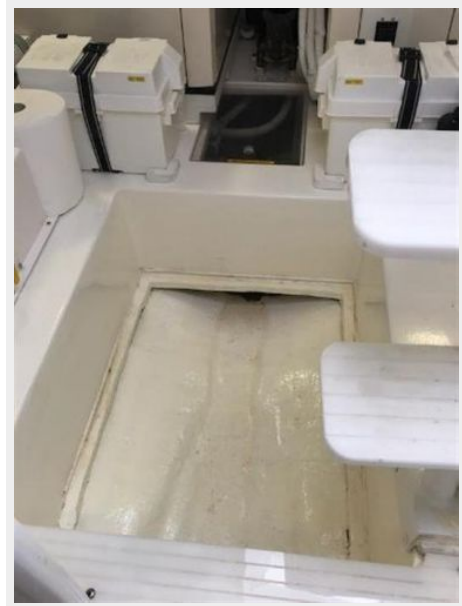
### Steering Locker Dry Bilge Detail



### Upgraded Grey Water Pumps



### Dry Bilge Detail



### Upgraded Black Water Pump

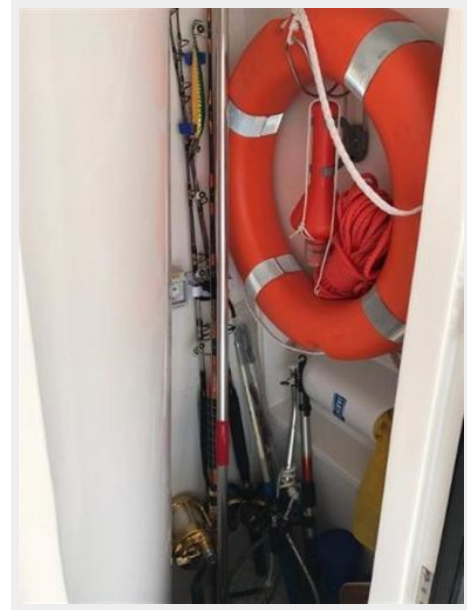




**Bilge Detail**



**Cockpit Storage Locker**



**Storage Locker**



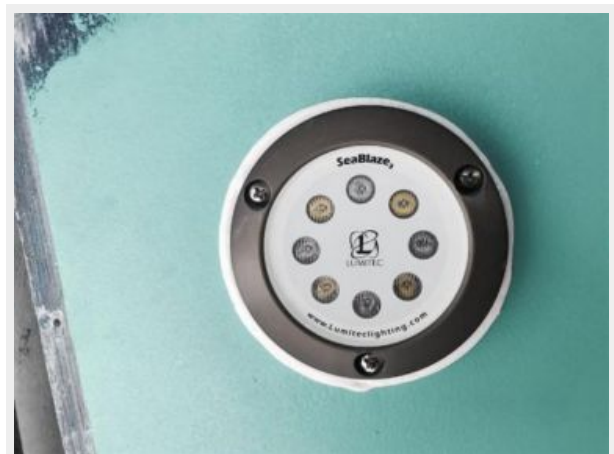
**Swim Platform and Bottom Detail**



**Botom Detail**



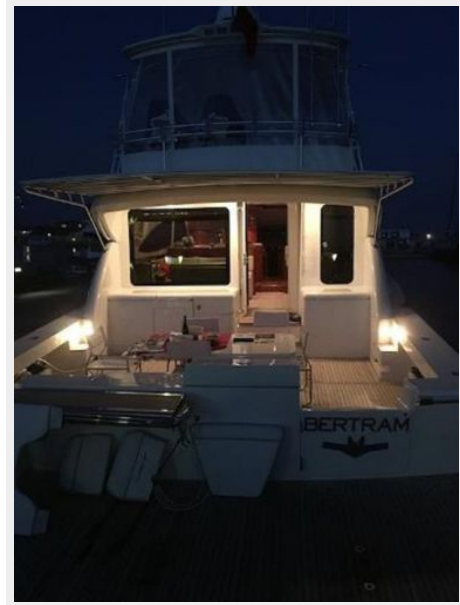
**Upgraded LED Underwater Lights**



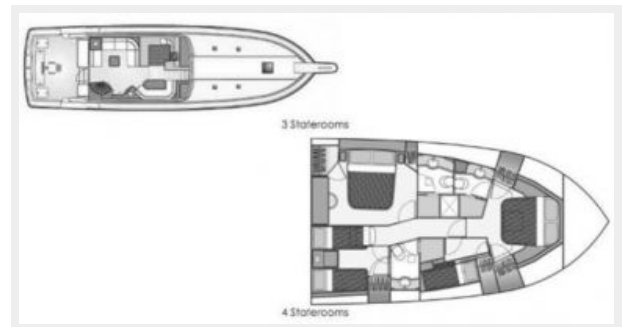
### Stored Indoors For Winter Seasons



### Cockpit Evening Lights



### Cockpit Evening Lights





# CONTACTS

---

Andrey Shestakov, leading yacht broker of the sales department of Shestakov Yacht Sales Inc. Shestakov Yacht Sales Inc., the official representative of the Miami/Fort Lauderdale FL headquarters.

## Contact details

---

Email: [andrey@shestakovyachtsales.com](mailto:andrey@shestakovyachtsales.com)

Web: [shestakovyachtsales.com/en/](http://shestakovyachtsales.com/en/)

## Telephones

---

USA: +1(954)274-4435

## Office hours

---

Monday – Saturday: **9:00 - 21:00** EDT

Sunday: **closed**

## Address

---



Harbour Towne Marina, 850 NE 3rd St,  
STE 213, Dania, FL 33004