

LOW HOURS - NEVER FISHED!! — BERTRAM



Судостроитель: BERTRAM

Год постройки: 2007

Модель: Sport Yacht

Цена: ЦЕНА ЯХТЫ ПО ЗАПРОСУ

Местонахождение: Italy

Длина общая: 63' 0" (19.20m)

Ширина: 18' 1" (5.51m)

Макс. осадка: 5' 3" (1.60m)

Крейс. скорость: 33 Kts. (38 MPH)

Макс. скорость: 38 Kts. (44 MPH)

Купить **LOW HOURS - NEVER FISHED!! — BERTRAM** а также выбрать подходящую вам яхту из нашего каталога яхт вам поможет опытный яхтенный брокер Андрей Шестаков. На сегодняшний день компания **Shestakov Yacht Sales Inc.** имеет большое количество яхт в собственном списке продаж, а также тесно сотрудничает со всеми крупными яхтенными производителями по всему миру.

Для того чтобы купить яхту **LOW HOURS - NEVER FISHED!! — BERTRAM** а также проконсультироваться по любому вопросу связанному с покупкой, продажей, чартером яхт позвоните по телефону **+7(918)465-66-44**.

ОГЛАВЛЕНИЕ

| | |
|-------------------------------|----|
| ОГЛАВЛЕНИЕ | 2 |
| ХАРАКТЕРИСТИКИ | 7 |
| Обзор | 7 |
| Основная информация | 7 |
| Размеры | 7 |
| Скорость, вместимость и масса | 7 |
| Размещение | 7 |
| Корпус и палуба | 8 |
| Информация о двигателе | 8 |
| ПОДРОБНОЕ ОПИСАНИЕ | 9 |
| Description | 9 |
| Key Features | 9 |
| Cockpit | 10 |
| Flybridge | 10 |
| Main Salon | 11 |
| Galley | 12 |
| Master Stateroom | 12 |
| VIP Stateroom | 13 |
| Over Under Guest Stateroom | 14 |
| Aft Twin Guest Stateroom | 14 |
| Guest Companionway | 15 |
| Deck & Hull Equipment | 15 |
| Electrical | 15 |
| Engine Room | 16 |
| Remarks | 17 |
| Exclusions | 17 |
| Mechanical Disclaimer | 17 |
| Исключения | 17 |

| | |
|--------------------------------------|----|
| Отказ от ответственности | 17 |
| ФОТОГРАФИИ | 19 |
| Port Profile | 19 |
| Bow | 19 |
| Stern Swim Platform and Tender | 19 |
| Stern Passerelle | 19 |
| Swimplatform | 19 |
| Cockpit | 19 |
| Passerelle | 20 |
| Cockpit | 20 |
| Cockpit Table | 20 |
| Cockpit Teak Detail | 20 |
| Starboard Cockpit Windlass and Cleat | 20 |
| Port Cockpit Windlass and Cleat | 20 |
| Cockpit | 21 |
| Cockpit Baitwell and Sink | 21 |
| Cockpit Freezer | 21 |
| Carbon Fibre Bimini Painted White | 21 |
| Carbon Fibre Bimini Painted White | 22 |
| Main Salon Forward | 22 |
| Main Salon Aft | 22 |
| Main Salon Forward | 22 |
| Main Salon Aft | 23 |
| Main Salon Aft | 23 |
| Main Salon TV | 23 |
| Main Salon Surround Speakers | 23 |
| Main Salon Surround Speakers | 23 |
| Main Salon Details | 23 |
| Wine Cooler | 24 |

| | |
|--|----|
| Galley | 24 |
| Galley Refrigerated Drawers | 24 |
| Galley Refrigerated Drawers | 24 |
| Dining Settee | 25 |
| Galley Cooktop | 25 |
| Stairs to Guest Staterooms | 25 |
| Galley Storage | 25 |
| LCD TV | 26 |
| Starboard Aft Twin Guest Stateroom | 26 |
| Stateroom Airconditioning Controls | 26 |
| Starboard Aft Stateroom Ensuite Head | 26 |
| Starboard Forward Bunk Stateroom | 27 |
| Forward Stateroom | 27 |
| Forward Stateroom Detail | 27 |
| Forward Stateroom LCD TV | 27 |
| Forward Stateroom Ensuite Head | 28 |
| Port Stateroom | 28 |
| Port Stateroom LCD TV | 28 |
| Port Stateroom Under Bed Storage | 28 |
| Port Stateroom Detail | 29 |
| Port Stateroom Entertainment Equipment | 29 |
| Port Stateroom Ensuite Head | 29 |
| Port Stateroom Ensuite Head | 29 |
| Washer and Dryer | 30 |
| Cockpit to Flybridge Stairs | 30 |
| Cockpit to Flybridge Stairs | 30 |
| Flybridge Aft | 30 |
| Flybridge Aft | 31 |
| Flybridge Forward | 31 |

| | |
|-------------------------------------|----|
| Flybridge Helm | 31 |
| Flybridge Helm | 31 |
| Flybridge Helm | 32 |
| Flybridge Helm | 32 |
| Flybridge Switch Panel | 32 |
| Engine Hours 322 | 32 |
| Autopilot | 33 |
| VHF Radio | 33 |
| Flybridge Helm Chairs | 33 |
| Flybridge Forward Seating and Table | 33 |
| Flybridge Seating Detail | 34 |
| Flybridge Sink and Refrigerator | 34 |
| Flybridge Seating Cushions | 34 |
| Bow | 34 |
| Anchor and Anchor Windlass | 35 |
| Anchor Locker and Chain | 35 |
| Starboard Side Detail | 35 |
| Bow Looking Aft | 35 |
| Entertainment Equipment | 36 |
| Distribution Panel | 36 |
| Distribution Panel | 36 |
| Generator | 36 |
| Generator Hours 309 | 36 |
| Engine Room Camera | 36 |
| Engine Room Detail | 37 |
| Engine Room Battery Switch Panel | 37 |
| Dry Bilge Detail | 37 |
| Main Engines | 37 |
| Upgraded Exhaust Vibration Isolator | 38 |

| | |
|-------------------------------------|-----------|
| Upgraded Exhaust Vibration Isolator | 38 |
| Engine Hours | 38 |
| Upgraded Dripless Shaft Seals | 38 |
| Steering Locker Dry Bilge Detail | 39 |
| Upgraded Grey Water Pumps | 39 |
| Dry Bilge Detail | 39 |
| Upgraded Black Water Pump | 39 |
| Cockpit Storage Locker | 40 |
| Bilge Detail | 40 |
| Storage Locker | 40 |
| Swim Platform and Bottom Detail | 40 |
| Bottom Detail | 40 |
| Upgraded LED Underwater Lights | 40 |
| Cockpit Evening Lights | 41 |
| Stored Indoors For Winter Seasons | 41 |
| Cockpit Evening Lights | 41 |
| КОНТАКТЫ | 42 |
| Контактная информация | 42 |
| Телефоны | 42 |
| Время работы | 42 |
| Адрес | 42 |

ХАРАКТЕРИСТИКИ

Обзор

Основная информация

Тип судна: Sport Yacht

Подкатегория: Convertible

Модельный год: 2007

Год постройки: 2007

Страна: Italy

Размеры

Длина общая: 63' 0" (19.20m)

Ширина: 18' 1" (5.51m)

Макс. осадка: 5' 3" (1.60m)

Скорость, вместимость и масса

Крейс. скорость: 33 Kts. (38 MPH)

Крейсерская скорость поворота: 1850 Kts.

Макс. скорость: 38 Kts. (44 MPH)

Водоизмещение: 95609 Pounds

Вместимость воды: 251 Gallons

Вместимость сточного бака: 118 Gallons

Объем топливного бака: 1849 Gallons

Размещение

Всего кают: 4

Всего коек: 6

Всего ком. состава: 3

Корпус и палуба

Материал корпуса: Fiberglass

Информация о двигателе

Двигатели: 2

Производитель: MTU

Модель: 16V 2000 M91

Тип двигателя: Inboard

Тип топлива: Diesel

ПОДРОБНОЕ ОПИСАНИЕ

Description

DON'T MISS THIS UNIQUE OPPORTUNITY TO BUY A VERY LIGHTLY USED 63 BERTRAM CONVERTIBLE. Without question the BEST OPTION on the market today! Flawless Styling and Quality Construction, Bertram has enjoyed a reputation for building spacious, comfortable, and solid Sportfish and you will enjoy true "Pride of Ownership" when you purchase a Bertram like this! This 4 Stateroom 3 head layout can comfortably accommodate up to 8 guests. Powered by 2000hp MTU 16V2000s with very low hours and excellent performance. This is a **RARE ONE OWNER BERTRAM THAT HAS NEVER BEEN FISHED.** This Bertram is lightly used and in excellent ready to cruise condition. If you are in the market for a Quality Bertram, Don't Let This Unique Option Slip By! She is easy to see 7 days a week. Schedule your appointment today.

KEY FEATURES TO CONSIDER:

RARE - ONE OWNER - NEVER FISHED 63' BERTRAM!! VERY LIGHTLY USED WITH ONLY 322 APPX HOURS!! 4 STATEROOM 3 HEAD LAYOUT!! UPGRADED 2000HP MTU 16V2000s!!

CUSTOM INTEGRATED SWIM PLATFORM FOR TENDER!!

CUSTOM OPACMARE PASSERELLE AND TENDER LIFT!!

WILLIAMS 385 JET TENDER WITH MPE 750 WEBER MOTOR!!

UPGRADED DRIPLESS SHAFT SEALS AND COMPLETELY DRY BILGES!! UPGRADED LED UNDERWATER LIGHTS!!

ALL INTERIOR CARPET UPGRADED TO WOOD FLOORS!! UPGRADED LARGER CUSTOM BLACK AND GREY WATER TANKS!!

TO MANY UNIQUE FEATURES TO LIST!!

THIS IS THE ABSOLUTE MOST UNIQUE BERTRAM 63 ON THE MARKET TODAY!!

Key Features

KEY FEATURES TO CONSIDER:

RARE - ONE OWNER - NEVER FISHED 63' BERTRAM!! VERY LIGHTLY USED WITH ONLY 322 APPX HOURS!! 4 STATEROOM 3 HEAD LAYOUT!! UPGRADED 2000HP MTU 16V2000s!!

CUSTOM INTEGRATED SWIM PLATFORM FOR TENDER!!

CUSTOM OPACMARE PASSERELLE AND TENDER LIFT!!

WILLIAMS 385 JET TENDER WITH MPE 750 WEBER MOTOR!!

UPGRADED DRIPLESS SHAFT SEALS AND COMPLETELY DRY BILGES!! UPGRADED LED UNDERWATER LIGHTS!!

ALL INTERIOR CARPET UPGRADED TO WOOD FLOORS!! UPGRADED LARGER CUSTOM BLACK AND GREY WATER TANKS!!

TO MANY UNIQUE FEATURES TO LIST!!

THIS IS THE ABSOLUTE MOST UNIQUE BERTRAM 63 ON THE MARKET TODAY!!

Cockpit

This 63' Bertram Convertible has a very spacious cockpit that harbors an arsenal of tackle storage cabinets. Everything a dedicated saltwater angler needs. In addition, ample rod storage throughout the boat means that owners can be ready for any fishing situation. This Bertram has the everything you need to battle that tournament winner or for relaxing aft deck entertaining.

- Opacmare Passerelle and Tender Davit
- Transom fish box plumbed to Eskimo Ice Machine
- Cockpit grill
- Tuna Door in cockpit
- Custom swim platform
- Two stainless cockpit freezers
- Cockpit fish box plumbed to macerator
- Cockpit tackle drawers
- Cockpit stereo speakers
- 24v overhead lighting
- Spiral staircase to bridge
- Teak decking with ice box beneath step
- Fresh & salt water wash downs

Flybridge

Every inch of this Bertram is built to deliver point-the-bow-and-go simplicity and precision-rigged performance. Obsessive commitments to quality, safety and customer satisfaction are revealed in the countless design and manufacturing details that make for ease of operation and unmatched comfort. The centerline position of the helm enhances that rare combination of visibility and control that only running a Bertram can deliver. Your input through the wheel and throttle's come together as powerful, intuitive grace and you feel more connected to the boat and the hull's interaction with the water.

- Full EZ2CY Enclosure
- U Shaped Bench Seats with Custom Table
- Storage below Helm Seats
- The Helm is well thought out and constructed with no visual restrictions to the operator
- Steering System Hydraulic
- MTU Digital Engine Display's
- Molded Fiberglass Hardtop with Recessed Overhead Lights
- Audio Speakers
- VHF Radio
- Radar
- Raymarine Chartplotter
- Digital Sounder
- Auto Pilot
- Ritchie Compass
- Helm air conditioning
- Rocket Launchers
- Sink & Refrigerated Box
- Rod locker
- Electric pop-up dash with electronics
- Murray Bros. Ladder Back helm chairs

Main Salon

As you enter the salon, the blend of beautiful Cherry Wood combined with rich fabrics creates a balanced atmosphere of luxury and comfort. The galley and dinette are on the same level as the salon and add to the functionality and flow of the vessel's accommodations.

- NEW Custom Wood Floors In Aft Salon
- High Gloss Cherry Cabinetry
- 46" Samsung Flatscreen TV
- KVH Sat TV Receiver
- UPS Backup Power System For KVH and Stereo
- 230v, 24v, 12v, Circuit Breaker Panels
- Generator Remote Start Panel
- Fresh water Level Gauge
- Bilge Pump Controls
- Bose Surround Sound System
- AM/FM/CD/DVD Stereo
- Scottsman Ice Maker
- Stainless Sink Basin w/Bar Storage Beneath
- Teak Liquor Rack
- White Cashmere Granite Countertops
- Decorative Coffee Table

- Decorative Throw Pillows
- Air Conditioning w/Digital SMX Control
- Wooden Blinds In Pockets
- Whisperwall Headliner
- High Gloss Cherry Cabinetry
- Overhear Hand Rail
- Decorative Wall Mounted Lamp
- 24v Recessed Lighting On Dimmers
- 24v Indirect Lighting
- 230v Outlets
- Ultra Leather L Shaped Couch w/Storage
- Large Pop Out Window In Aft Bulkhead
- Companionway Door To Cockpit

Galley

This fully furnished galley offers all the comforts of home. A perfect design, this galley is sure to satisfy everyone that comes aboard!

- High Gloss Cherry Cabinetry
- 4 SubZero Frig/Freezer Drawers
- 4 Burner Kenyon Electric Cook Top With Sliding Granite Cover
- 24v Recessed Lighting
- 24v Indirect Lighting
- White Cashmere Granite Countertops
- Overhead Rod Storage Locker
- Dish Washer
- GE Profile Microwave/Convection Oven
- Pull Out Storage Drawers
- Dishware and Silverware
- Twin Underhung Sink Basins
- Decorative Faucet
- Hot And Cold Pressure Water
- Trash Receptacle
- Tinted Glass Windows w/Wooden Blinds
- Air Conditioning
- Amtico Sole
- 230v Outlets
- Hand Held Fire Extinguisher

Master Stateroom

The elegance comfort and special attention to detail of the yacht are continued in the master

The elegance, comfort and special attention to detail of the yacht are contained in the master cabin. A double island berth is easily accessible from either side. A spacious wardrobe provides ample storage for clothing and has a full length mirror inside the door. The private ensuite has plenty of room while onboard with a full shower. A perfect nook for lazy days at anchor!

- Queen Berth with Large Storage Underneath
- Decorative Bed Cover, Pillow Shams, and Throw Pillows
- Carpet
- Twin Night Tables
- Port and Stbd. Cedar Lined Hanging Lockers
- Entertainment Center Locker
- Pull Out Drawers
- Air Conditioning
- Storage Cabinets
- Whisperwall Headliner
- High Gloss Cherry Cabinetry
- Opening Hatch w/Screen and Blackout
- 230v Outlets
- 24v Recessed Lighting
- 24v Indirect Lighting
- Bulkhead Mounted Reading Lamps
- Large Mirror On Aft Bulkhead
- Flat Screen TV
- AM/FM/CD Stereo and Speakers

Ensuite Private Head:

- Tecma Electric Head
- 24v Recessed Lighting
- 230v Outlets
- Granite Countertop
- High Gloss Cherry Cabinetry
- Underhung Sink Basin
- 6 Door Mirrored Vanity
- Storage Cabinets
- Hot and Cold Pressure Water
- Amtico Teak and Holly Sole
- Mirrored Ceiling
- Air Conditioning
- Extractor Fan
- Opening Hatch w/Screen and Blackout
- Stall Shower w/Bifold Door and Overhead Light

VIP Stateroom

The forward VIP Stateroom features a double berth, side tables and A/C control. Access to the private ensuite head is made inside the cabin.

- Queen Island berth
- Storage under berth
- Air conditioning
- Closets with mirror and storage
- Bed spreads with coordinated shams and accent pillows

Ensuite Private Head:

- Tecma Electric Head
- 24v Recessed Lighting
- 230v Outlets
- Granite Countertop
- High Gloss Cherry Cabinetry
- Underhung Sink Basin
- 6 Door Mirrored Vanity
- Storage Cabinets
- Hot and Cold Pressure Water
- Amtico Teak and Holly Sole
- Mirrored Ceiling
- Air Conditioning
- Extractor Fan
- Opening Hatch w/Screen and Blackout
- Stall Shower w/Bifold Door and Overhead Light

Over Under Guest Stateroom

The Starboard Forward Guest Stateroom features an over/under berth, night table and A/C controls.

- Upper and lower single berths
- Storage under lower berth
- Air conditioning
- Closet with mirror and storage
- Bed spreads with coordinated shams and accent pillows

Aft Twin Guest Stateroom

The Starboard Aft Guest Stateroom features Twin Berths, night table and A/C controls. Access to the head is made inside the cabin.

- Twin side by side single berths
- Storage under lower berth
- Air conditioning
- Closet with mirror and storage
- Bed spreads with coordinated shams and accent pillows

Guest Companionway

- Full Size Samsung Washer and Dryer

Deck & Hull Equipment

Versatile and seaworthy, this bulletproof 63' Bertram has been equipped with everything you need to safely cruise and fish anywhere. Easy access to the bow from either port or starboard side with a forward bow pulpit.

- 24v Running Lights
- 24v Trim Tabs
- Bow Pulpit w/Anchor Roller
- 24v Lewmar Electric Windlass
- 50 Kilo Delta Anchor with 110 meters (328') of chain
- 5 Opening Deck Hatches w/Screens and Blackouts
- Nonskid Decks
- Stainless Cleats and Chocks
- Dock lines and Fenders
- LED Underwater Lights (Upgrade)
- Fiberglass Hard Top w/Molded Running Lights
- Fore And Aft Facing Flood Lights
- Whip VHF Antennas
- Trumpet Horn
- Molded Cockpit Steps w/Courtesy Lighting
- Side Power Bow Thruster

Electrical

- (2) 23 KW 230V 50HTZ Kohler Generators In Sound Shields
- Shore Power Converter 120/220/380 Volt
- (2) 50 Amp Shore Power Cords On Glendenning Cable Masters
- 230v Hot Water Heater
- 230v Malber Washer and Dryer 110v AC Compressors
- 24v Rule Bilge Pumps w/Float Switches

- Charles Iso Boost Power Transformer
- Mastervolt Battery Charger - New 2016
- (4) New 2016 12v 8D Batteries (House)
- (6) New 2016 Odyssey 12v Start Batteries (Engine)
- (2) New 2016 12v Batteries (Generators)
- 24v Blowers
- 24v Trim Tabs
- 24v Macerator Pump For Fish Box
- 230v Outlets
- 24v Interior Lighting
- 240v Head Hunter Fresh Water Pump
- 24v Tecma Electric Heads
- 24v Horn
- 24v Running Lights
- 12v Outlets for electric Rods In Cockpit and Fly

Engine Room

Easy access from the cockpit, this well laid out stand up engine room has plenty of room for routine maintenance and spare parts. The engine room on the 60 Bertram is an absolute amazing use of space!

- Twin MTU 16V 2000 - 322 Approx. Hours
- Twin Kohler 23KW 230V 50 HTZ Generators In Sound Boxes - 309 Approx. Hours
- 1000 Series Racor Filters on Manifolds (Mains)
- Valved Water Pickups For Emergency Bilge Pumps Off Mains
- 500 Series Racor Filters (Gens)
- (2) Glendenning Cable Masters
- Delta T Air Intake System
- All New Plumbing and Manifold For AC Cooling Water System (Upgrade)
- Bulkhead Mounted Coolant Overflow Tanks
- (4) 24v Blowers (All New) (Upgrade)
- 24v Lights
- 230v Lights
- ZF Transmissions
- Trolling Valves
- Dometic Eskimo Ice maker
- Sea Strainers
- Engine Room Camera
- Overhead Hand Rail
- Full Beam Fiberglass Fuel Tank w/Sight Gauge and Clean Out (1850 gals)
- Rule 24v Bilge Pumps w/Float Switches
- Marche AC Water Circulating Pump and Back Up Pump (Upgrade)

- Hot Water Heater
- Dripless Shaft Seals
- FCI 1200GPD Watermaker
- Reverso Oil Change Pump w/Manifold
- Fireboy FV241 Fire System (Recertified)
- Hydraulic Trim Pump and Reservoir
- Battery Boxes
- AC Compressors and Pumps
- Fresh Water Pump

Remarks

This by far the Best Bertram on the market today! Loaded with custom features unlike anything else on the market this Bertram has everything you need to cruise or fish with your family! Absolutely Turn Key Condition - this is the most unique opportunity on the market for a 63' Bertram Convertible That Has Never Been Fished. It won't last long and is easy to see 7 days a week. Schedule your appointment today.

Exclusions

Owners personal effects. A list will be provided upon request.

Mechanical Disclaimer

Engine hours are a representation of what the listing broker has been supplied by the owner and/or actual reading of the engine hour meters. The broker cannot guarantee the true hours. It is the responsibility of the purchaser to verify engine hours, major overhauls and all other representations noted on the listing brochure.

Исключения

При продаже яхты исключаются личные вещи владельца.

Отказ от ответственности

Компания предоставляет описание судна или яхты добросовестно, но не может гарантировать точность этой информации, а также не ручается за техническое состояние. Покупатель должен проинструктировать своих агентов или оценщиков исследовать представленную информацию более подробно, по собственному желанию. Продажа судна или яхты, изменение цены или снятие с продажи будет происходить без

предварительного уведомления.

ФОТОГРАФИИ

Port Profile



Bow



Stern Swim Platform and Tender



Stern Passerelle



Swimplatform



Cockpit



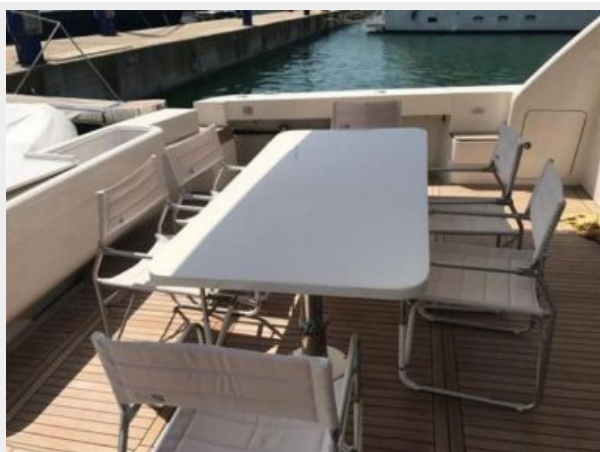
Cockpit



Passerelle



Cockpit Table



Cockpit Teak Detail



Starboard Cockpit Windlass and Cleat



Port Cockpit Windlass and Cleat



Cockpit



Cockpit Baitwell and Sink



Cockpit Freezer



Carbon Fibre Bimini Painted White



Carbon Fibre Bimini Painted White



Main Salon Forward



Main Salon Forward



Main Salon Aft



Main Salon Aft



Main Salon Aft



Main Salon TV



Main Salon Surround Speakers



Main Salon Surround Speakers



Main Salon Details



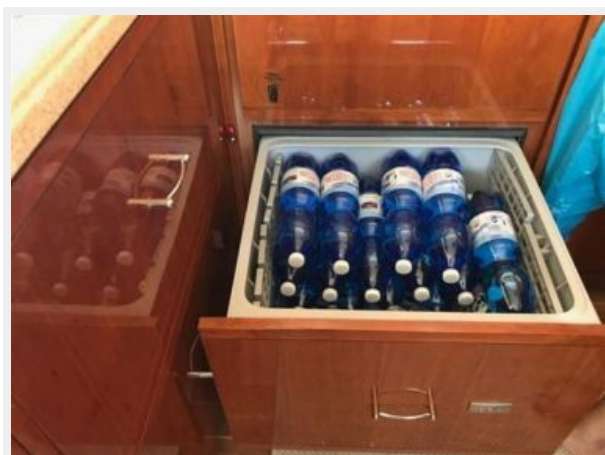
Galley



Wine Cooler



Galley Refrigerated Drawers



Galley Refrigerated Drawers



Galley Cooktop



Dining Settee



Galley Storage



Stairs to Guest Staterooms



Starboard Aft Twin Guest Stateroom



LCD TV



Stateroom Airconditioning Controls



Starboard Aft Stateroom Ensuite Head



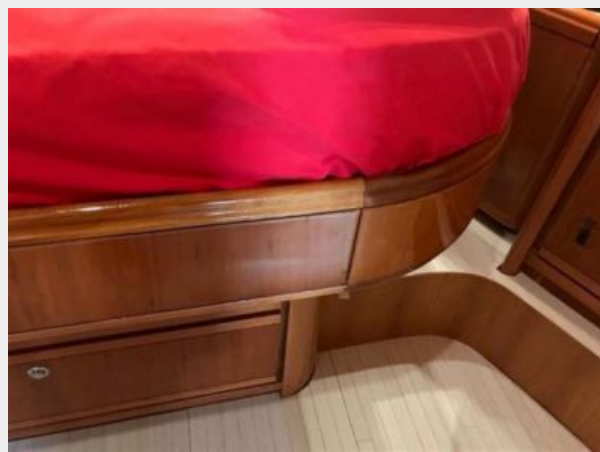
Starboard Forward Bunk Stateroom



Forward Stateroom



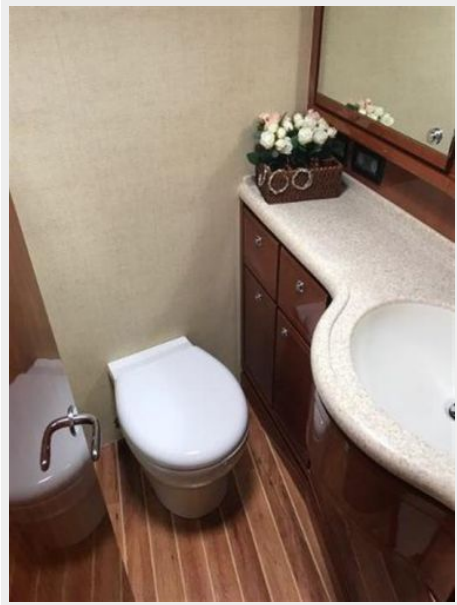
Forward Stateroom Detail



Forward Stateroom LCD TV



Forward Stateroom Ensuite Head



Port Stateroom



Port Stateroom LCD TV



Port Stateroom Under Bed Storage



Port Stateroom Detail



Port Stateroom Entertainment Equipment



Port Stateroom Ensuite Head



Port Stateroom Ensuite Head



Washer and Dryer



Cockpit to Flybridge Stairs



Cockpit to Flybridge Stairs



Flybridge Aft



Flybridge Aft



Flybridge Forward



Flybridge Helm



Flybridge Helm



Flybridge Helm



Flybridge Helm



Flybridge Switch Panel



Engine Hours 322



Autopilot



VHF Radio



Flybridge Helm Chairs



Flybridge Forward Seating and Table



Flybridge Seating Detail



Flybridge Sink and Refrigerator



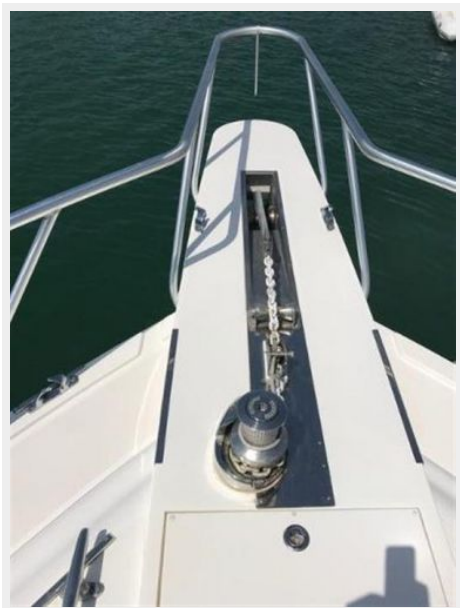
Flybridge Seating Cushions



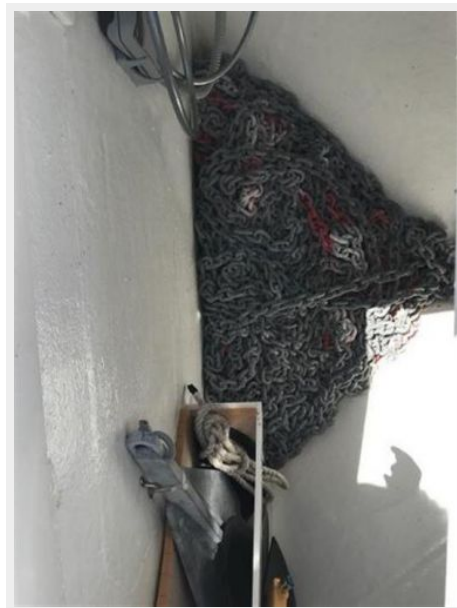
Bow



Anchor and Anchor Windlass



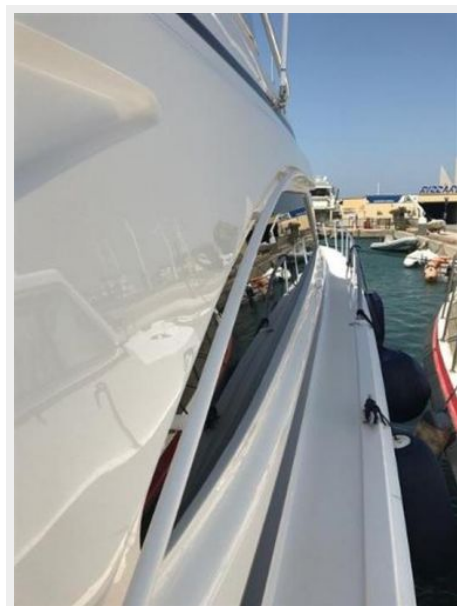
Anchor Locker and Chain



Bow Looking Aft



Starboard Side Detail



Entertainment Equipment



Distribution Panel



Distribution Panel



Generator



Generator Hours 309



Engine Room Camera



Engine Room Detail



Engine Room Battery Switch Panel



Dry Bilge Detail



Main Engines



Upgraded Exhaust Vibration Isolator

Upgraded Exhaust Vibration Isolator



Engine Hours



Upgraded Dripless Shaft Seals



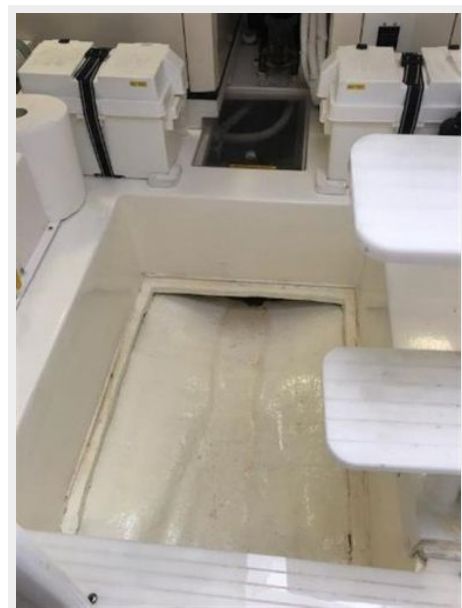
Steering Locker Dry Bilge Detail



Upgraded Grey Water Pumps



Dry Bilge Detail



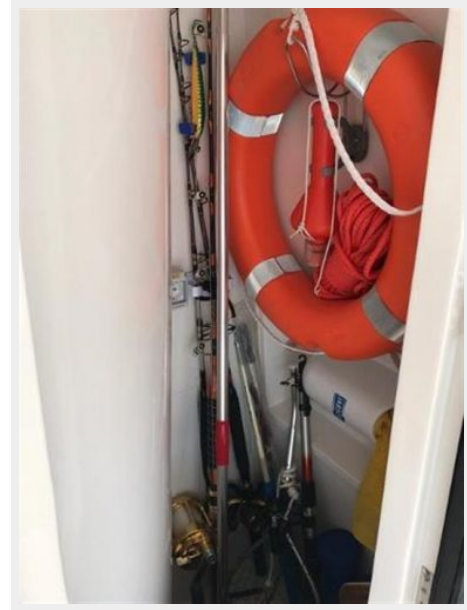
Upgraded Black Water Pump



Bilge Detail



Cockpit Storage Locker



Storage Locker



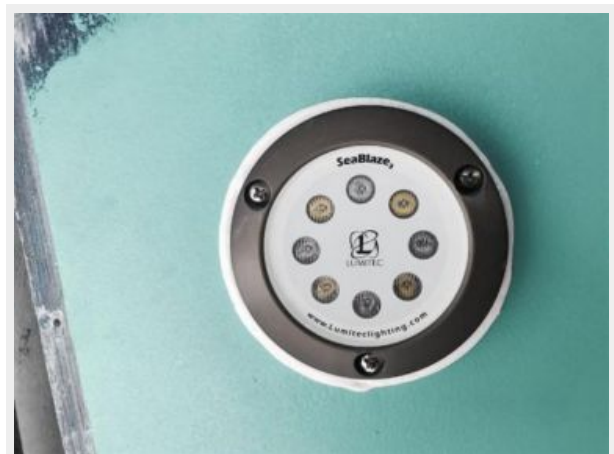
Swim Platform and Bottom Detail



Botom Detail



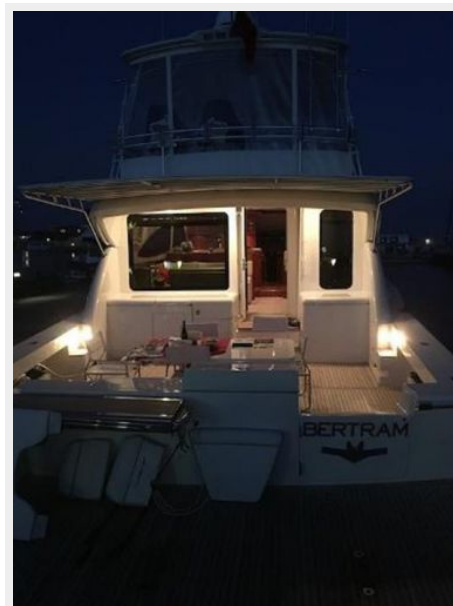
Upgraded LED Underwater Lights



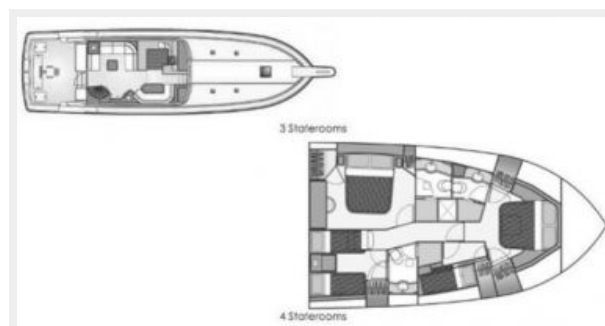
Stored Indoors For Winter Seasons



Cockpit Evening Lights



Cockpit Evening Lights



КОНТАКТЫ

Андрей Шестаков (Andrey Shestakov) – ведущий яхтенный брокер отдела продаж яхт и судов компании Shestakov Yacht Sales Inc. Официальный представитель Shestakov Yacht Sales Inc. для русскоговорящих клиентов в центральном офисе компании в Майами/Форт Лодердейл/Флорида/США.

Контактная информация

Email: andrey@shestakovyachtsales.com

Web: shestakovyachtsales.com

Телефоны

Краснодарский край: **+7(918)465-66-44**

США, Майами, Флорида: **+1(954)274-4435**

Время работы

Понедельник – Суббота: **9:00 - 21:00**
EDT

Воскресенье: **Закрето**

Адрес



Harbour Towne Marina, 850 NE 3rd St,
STE 213, Dania, FL 33004