

## JADE SKY — BUDDY DAVIS



**Builder:** BUDDY DAVIS

**Year Built:** 2002

**Model:** Sport Fisherman

**Price:** PRICE ON APPLICATION

**Location:** United States

**LOA:** 52' 0" (15.85m)

**Beam:** 16' 0" (4.88m)

**Max Draft:** 4' 4" (1.32m)

**Cruise Speed:** 26 Kts. (30 MPH)

**Max Speed:** 30 Kts. (35 MPH)

Our experienced yacht broker, Andrey Shestakov, will help you choose and buy a yacht that best suits your needs **Jade Sky — BUDDY DAVIS** from our catalogue. Presently, at Shestakov Yacht Sales Inc., we have a wide variety of yachts available on our sale's list. We also work in close contact with all the big yacht manufacturers from all over the world.

If you would like to buy a yacht **Jade Sky — BUDDY DAVIS** or would like help answering any questions concerning purchasing, selling or chartering a yacht, please call **+1(954)274-4435**

# TABLE OF CONTENTS

TABLE OF CONTENTS	2
SPECIFICATIONS	5
Overview	5
Basic Information	5
Dimensions	5
Speed, Capacities and Weight	5
Accommodations	5
Hull and Deck Information	5
Engine Information	6
DETAILED INFORMATION	7
Description	7
Introduction	7
Key Features	8
Recent Service & Upgrades	9
Cockpit	10
Helm Deck	10
Main Salon	11
Galley	11
Master Stateroom	12
VIP Guest Stateroom	12
Deck Equipment	13
Tower	13
Engine Room	14
Electrical	15
Remarks	15
Exclusions	15
Mechanical Disclaimer	15
Disclaimer	16

Exclusions	16
Disclaimer	16
PHOTOS	17
Bow Running Shot	17
Port Bow	17
Stern	17
Starboard Stern	17
Cockpit	17
Bluewater Fighting Chair	17
Cockpit Overhead	18
Helm Deck Starboard	18
Helm	18
Helm	18
Helm Chair Detail	18
Helm Deck Seating and Table	18
Helm Deck Seating	19
Helm Deck Refrigerator and Ice maker	19
Starboard Side Detail	19
Windshield Detail	19
Port Side Detail	19
Bow Overhead	19
Anchor and Anchor Windlass	20
Stairway from Helm Deck	20
Starboard Aft Galley	20
Main Salon Couch	20
Main Salon Rod Storage	20
Main Salon Couch	20
Main Salon LCD TV	21
Main Salon Entertainment Equipment	21

Galley	21
Galley Microwave	21
Galley Range	21
VIP Stateroom with Pullman Berth	21
VIP Stateroom TV	22
VIP Stateroom Pullman Berth	22
Forward Master Stateroom	22
Forward Master Stateroom	22
Master Stateroom En-Suite Head	22
Master Stateroom En-Suite Head	22
Distribution Panel	23
Water Maker	23
Bottom Job 2021	23
Bottom Job 2021	23
Bottom Job 2021	23
Bottom Job 2021	23
Bottom Job 2021	24
Bottom Job 2021	24
Bottom Job 2021	24
Bottom Job 2021	24
Bottom Job 2021	24
CONTACTS	25
Contact details	25
Telephones	25
Office hours	25
Address	25

# SPECIFICATIONS

## Overview

### Basic Information

Category: Sport Fisherman	Model Year: 2002
Year Built: 2002	Country: United States
Cockpit: Yes	

### Dimensions

LOA: 52' 0" (15.85m)	Beam: 16' 0" (4.88m)
Max Draft: 4' 4" (1.32m)	MFG Length: 52' 6" (16.00m)

### Speed, Capacities and Weight

Cruise Speed: 26 Kts. (30 MPH)	Max Speed: 30 Kts. (35 MPH)
Displacement: 50000 Pounds	Water Capacity: 150 Gallons
Holding Tank: 50 Gallons	Fuel Capacity: 820 Gallons

### Accommodations

Total Cabins: 2	Total Berths: 3
Sleeps: 5	Total Heads: 2

### Hull and Deck Information

Hull Material: Fiberglass	Hull Configuration: Planing
---------------------------	-----------------------------

## Engine Information

---

**Engines:** 2

**Manufacturer:** MAN

**Model:** V10 2840LE403

**Engine Type:** Inboard

**Fuel Type:** Diesel

---

# DETAILED INFORMATION

---

## Description

---

Don't Miss a very rare opportunity to buy ONE OF THE LAST ORIGINAL 52' BUDDY DAVIS EXPRESS built by Carson "Buddy" Davis.

Without question the absolute best opportunity for a 52' Buddy Davis on the market today! Sure to stand out anywhere with her flawless styling and quality construction. The Original Buddy Davis had the best reputation for building fast, comfortable, and seaworthy Sportfish and you will enjoy true "Pride of Ownership" when you purchase a Classic Carolina Sportfish like this!

This is a ONE OF A KIND Rare Ensemble ready to cruise today. If you are in the market for a Quality Buddy Davis, Don't Let This Slip By! She is easy to see 7 days a week. Schedule your appointment today.

### KEY FEATURES TO CONSIDER:

**ONE OF THE LAST ORIGINAL BUILT 52' BUDDY DAVIS**

**NEW BOTTOM PAINT AND PROPS RECONDITIONED MAY 2021**

**MAHOGANY TRANSOM STRIPPED AND REVARNISHED MAY 2021**

**2000 HOUR SERVICE COMPLETE MARCH 2018**

**RECENTLY REPLACED ISENGLASS HELM DECK ENCLOSURE**

**UPGRADED UNDERWATER LED LIGHTS**

**REBUILT ANCHOR WINDLASS**

**FURUNO NAVNET TZTOUCH AND SOUNDER**

**HELM DECK AIR-CONDITIONING**

**NAVY BLUE AWLCRAFT 2000 HULL PAINT**

**WATER MAKER**

**TO MANY UPGRADES AND FEATURES TO LIST**

**BEST ORIGINAL 52 BUDDY DAVIS ON THE MARKET TODAY!!**

## Introduction

---

Don't Miss a very rare opportunity to buy ONE OF THE LAST ORIGINAL 52' BUDDY DAVIS

---

EXPRESS built by Carson "Buddy" Davis.

Without question the absolute best opportunity for a 52' Buddy Davis on the market today! Sure to stand out anywhere with her flawless styling and quality construction. The Original Buddy Davis had the best reputation for building fast, comfortable, and seaworthy Sportfish and you will enjoy true "Pride of Ownership" when you purchase a Classic Carolina Sportfish like this!

The Original 52' Buddy Davis combines luxurious cruising amenities and a world-class offshore fishing platform, complete with a huge bow flare and sharp entry, for an extremely soft and dry ride. Accommodations include a full-beam two-stateroom/ two head floor plan, a large tournament style cockpit, and a spacious air-conditioned command bridge for entertaining.

## Key Features

---

**ONE OF THE LAST ORIGINAL BUILT 52' BUDDY DAVIS**

**NEW BOTTOM PAINT AND PROPS RECONDITIONED MAY 2021**

**MAHOGANY TRANSOM STRIPPED AND REVARNISHED MAY 2021**

**2000 HOUR SERVICE COMPLETE MARCH 2018**

**RECENTLY REPLACED ISENGLASS HELM DECK ENCLOSURE**

**UPGRADED UNDERWATER LED LIGHTS**

**REBUILT ANCHOR WINDLASS**

**FURUNO NAVNET TZTOUCH AND SOUNDER**



## HELM DECK AIR-CONDITIONING

## NAVY BLUE AWLCRAFT 2000 HULL PAINT

## WATER MAKER

## TO MANY UPGRADES AND FEATURES TO LIST

## BEST ORIGINAL 52 BUDDY DAVIS ON THE MARKET TODAY!!

### Recent Service & Upgrades

---

- New Bottom Job - May 2021
- Props reconditioned - May 2021
- Mohogany Transom stripped and revarnished - May 2021
- New Stainless Galley Steel Refrigerator and Freezer - 2020
- Underwater led replaced - May 2021
- Rebuilt Anchor windlass - 2019
- New windshield gaskets and caulking - 2019
- New isinglass 2018
- New injectors 2018
- Cylinder Liners and Valves Borescoped 2018
- New Furuno NavNet TZTouch chart plotter
- New Sounder with new transducer 2017
- New Furuno digital compass 2017
- New autopilot control 2017
- New stereo and speakers 2017
- New refrigerator Helm Deck 2017
- New icemaker Helm Deck 2017
- Replaced main hatch seals 2017
- New live well pump 2017
- New fish box pump 2017
- New air compressor 2017
- New underwater led lights 2016
- All new Air-Conditioning except Master Stateroom 2016
- Navy Blue AwlGrip 2000 Hull paint 2015

---

## Cockpit

---

This 52' Buddy Davis Express has a very spacious cockpit that harbors an arsenal of tackle storage cabinets, everything a dedicated saltwater angler needs. In addition, ample rod storage throughout the boat means that owners can be ready for any fishing situation. Everything you need to battle that tournament winner or for family entertaining.

- Insulated Baitwell W/ Seawater Circulation Pump
- Built-In Insulated Transom Fish Box
- Large Walk-Through Tuna Door
- Engine Room Entrance From Cockpit
- High Volume Overboard Drains
- Dockside Water Inlet W/ Pressure Reducing Valve
- Blue Waters Fighting Chair
- Cold Box for Ice Maker
- Fresh & Saltwater Wash Down Systems
- Built In Tackle Center
- ICE SEA 800lb Ice Maker
- RUPP Outriggers
- Center Rigger
- Built In Backing Plate For Fighting

---

## Helm Deck

---

A custom teak dash highlights the helm station accented with a teak sole and steps up from the cockpit. Plenty of seating at either of the two L-shaped sofas and there is a custom cabinet for the helm electronics, storage under the bench seats. The helm deck has reverse air condition/heat and has a four-sided enclosure for excellent visibility from the bridge. There is a molded fiberglass cabinet forward portside that is equipped for additional storage. The centerline position of the helm enhances your control and your input through the throttle's come together as a powerful connection to the boat and the hull's interaction with the water.

- Fully Air Conditioned Helm Deck
- Custom Teak Helm Pod W/ Single Lever Controls & Cover
- Reverse Cycle Cruise Air A/C & Heat
- Polished Stainless Steering Wheel
- 2 Pompanette Teak Helm & Companion Chairs
- Cushions for Helm seating
- DC Electrical Panel W/ Circuit Breakers
- Companionway Door Leading Below
- Custom Windshield W/ Commercial Wiper/Washer System
- Custom Electronics Console
- Molded Storage Cabinet Portside

- Wrap-Around Seating W/ Storage Under All-Weather Cushions
- Four-Sided Enclosure
- MAN Engine Gauge Package
- AM/FM Stereo
- Refrigerator
- Ice maker

## Electronics

- Furuno 72 Mile Radar
- Furuno NavNet Chartploter
- Furuno NavNet TZTouch Chartploter
- Furuno Sounder FCV-1200L
- Simrad AP-20 Autopilot
- Icom IC-M602 VHF Radio
- Icom IC-M127 VHF Radio
- B & G HS 2000 Speed/Log/Depthfinder
- Ocean Marine PC Chart Plotter/GPS
- Datamarine Speed and Distance Logs
- FloScan Fuel Flow Reader

## Main Salon

The stairs down from the helm deck lead into the main cabin. The port side salon is directly across from the galley. Here you will find the large salon accented with beautiful maple cabinetry and burl wood inlays throughout.

- Port Side Ultra Leather Sofa W/ Storage Below
- Plush Carpeting W/ Runners
- Vinyl Headliner
- AC/DC Recessed Lighting W/ Dimmer Controls
- Overhead Maple Storage Cabinets
- In-Deck Storage Below W/ Lighting
- Sony Flat Screen TV
- DVD Player
- AM/FM Stereo
- Air Conditioning System W/ Digital Control
- Telephone Outlet
- Under Step Storage
- Main Electrical Panel

## Galley

This fully furnished galley offers all the comforts of home. Custom cabinet and drawer storage with large refrigerator and freezer. A perfect design, this galley is sure to satisfy everyone that comes aboard!

- Starboard Side Across From Salon
- Custom Mirrored Back Splash
- Subzero Refrigerator & Subzero Freezer
- Microwave Oven
- Solid Surface Countertops
- Princess 2-Burner Cook Top
- High Gloss Maple Cabinetry W/ Abundant Drawer & Cabinet Storage
- Exhaust Fan
- Maple Flooring
- Over Counter Task Lighting

## Master Stateroom

---

The elegance comfort and special attention to detail of the yacht are continued in the master cabin. A Queen size berth and spacious wardrobe provides ample storage for clothing. The private ensuite has plenty of room while onboard with a full shower. A perfect nook for lazy days at anchor!

- Forward of The Salon W/ Private Ensuite Head
- Queen Berth W/ Storage Compartments & Drawers Below
- Flat Screen TV
- Overhead Reading Lights
- Vinyl Headliner
- Vinyl Wall Coverings
- Custom Inner-Spring Mattress W/ Bed Cover, Throw Pillows & Pillow Shams

### Master Stateroom En-Suite Head

- Private En-Suite Shower / Head
- Vanity W/ Mirrored Storage Cabinet Above & Below
- Exhaust Fan
- Fiberglass Shower Stall W/ Safety Glass Door
- Air Conditioning / Heat Discharge Vent
- AC/DC Light Fixture

## VIP Guest Stateroom

---

The VIP Guest Stateroom features a double berth and a single pullman berth for an additional guest. Access to the head is made inside the cabin.

- Double Berth with easy side access
- Single Pullman Berth
- Storage under lower berth
- Flat Screen TV
- Air conditioning
- Dresser with mirror and storage
- Bed spreads with coordinated shams and accent pillows

### **VIP Guest En-Suite Head**

- Private Ensuite Entry From Stateroom
- Enclosed Fiberglass Shower Stall
- Wood Flooring
- Electric Head
- Corian Counter Tops & Sink
- Mirrored Vanity & Storage Cabinet
- Exhaust Fan
- Air Conditioning Vent

## **Deck Equipment**

---

Versatile and stylish this 52' Buddy Davis has been equipped with everything you need to safely cruise and fish anywhere. Easy access to the bow from either port or starboard side with a forward bow pulpit.

- Teak Toe Rail
- Teak Helm Pod
- Teak Bridge Cap
- Teak Cockpit & Bridge Deck
- Teak Bow Pulpit W/ Stainless Steel Anchor Chute & Roller
- Lewmar Windlass W/ Forward Deck Foot Controls
- Delta Plow Anchor
- 200' feet of 5/8" inch 3 braid marine grade nylon rode and 50' of chain
- Stainless Steel Cleats (2) Stern, (4) Amidship, (2) Forward
- Stainless Steel Line Chocks (2)
- Stainless Steel Water Fill Deck Plate
- Davis Custom Stainless Steel Transom Corner Hawse Pipes
- Custom Stainless Steel Chaff Guards
- Solid Stock Stainless Steel Rub Rail Molding On Sheer & Hull Guards
- Switlik 6 person liferaft
- ACR Global Fix SE-12750 EPIRB

## **Tower**

- Garmin 10" plotter
- Simrad AP22 Autopilot Remote
- Furuno FCV-582L Sounder
- Icom IC-M127 VHF Radio
- Glendinning Engine Throttles

## Engine Room

Easy access from the cockpit, this well laid out stand up engine room has plenty of room for routine maintenance and spare parts. All mechanical systems were designed to exceed the standard of an offshore custom boat including the dual crash pumps, electronic engine control system, Sea Fire suppressant system, cockpit console freezer and live bait well, windshield with commercial grade wiper and washer system, battery monitoring system and air conditioning / heat system on the command bridge.

- Twin MAN V10 D2840LE403 1050hp
- **NEW INJECTORS** - October 2017
- **BOROSCOPE CYLINDERS** - October 2017
- Sea Recovery Aqua Whisper Watermaker
- ZF ZF550A Gearboxes
- Command Bridge Air Conditioning
- Engine Block Heaters
- Engine Room hoses
- Hydraulic Steering W/ Power Assist
- Emergency Crash Pumps (2)
- Quarter-Turn Sea Valves On Thru Hull Fittings
- Hot Water Heater
- Davis Custom Stainless Steel Rudders
- Engine Room Freshwater Outlet
- Port & Starboard Centralized Drainage System
- Racor Fuel Filters On Engines & Genset
- Coolant Recovery System On Genset & Mains
- Water Filtration System
- Stainless Steel Trim Tabs W/ Recessed Actuators
- High Gloss Imron Engine Room Paint Finish
- Dripless Shaft & Rudder Seals
- Thru-Cockpit Air Intakes
- Main Engine Start & Stop Switches
- Marine Engine Alternators
- Engine Room Vent Fans
- DC Oil Change System
- Three Inch Stainless Steel Shafts

- Automatic Fresh Water System W/ Back-Up Pump
- Fireboy FE-241 Automatic Halon Suppression System

## Electrical

---

AC/DC main electrical panel with amperage and voltage metering, sliding gate shore/generator selector system generator remote and bilge pump control.

- Westerbeke 15kw Generator - March 2021 - 6584 Hours
- 12/24 Volt Bridge Electrical Panel For Equipment & Electronics
- 120/240 VOLT 50 AMP Service
- Heavy Duty Marine Batteries Housed In A Fiberglass Box Maintained By A Fully-Automatic Battery Charger
- (2) 12V batteries AMG 8D
- Battery Parallel System
- AC and DC Fluorescent Engine Room Lighting
- 120 Volt GFI On Bridge
- Fresh Water & Fuel Tank Gauges
- Internal Bonding System W/ Zinc Anode Protection & Dynaplate Grounding
- AC & DC Lighting In Staterooms, Salon & Galley
- CABLE/TV/Phone Hook-Up

## Remarks

---

This by far the most unique Opportunity for an Original 52' Buddy Davis on the market today! Fully serviced this 52' Express has everything you need to cruise or fish with your family and friends. Truly priced to sell and this 52' Buddy Davis Express won't last long!

If you are in the market for a Quality Buddy Davis, Don't Let This Slip By! She is easy to see 7 days a week. Schedule your appointment today.

## Exclusions

---

Owners personal effects. A list will be provided upon request.

## Mechanical Disclaimer

---

Engine hours are a representation of what the listing broker has been supplied by the owner and/or actual reading of the engine hour meters. The broker cannot guarantee the true hours. It is the responsibility of the purchaser to verify engine hours, major overhauls and all other representations noted on the listing brochure.

---

## Disclaimer

---

The Company offers the details of this vessel in good faith but cannot guarantee or warrant the accuracy of this information nor warrant the condition of the vessel. A buyer should instruct his agents, or his surveyors, to investigate such details as the buyer desires validated. Hours listed may vary from actual hours due to recent use. Purchaser is encouraged to verify hours prior to purchase. This vessel is offered subject to prior sale, price change, or withdrawal without notice.

---

## Exclusions

---

Owner's personal belongings.

---

## Disclaimer

---

The Company offers the details of this vessel or yacht in good faith but cannot guarantee or warrant the accuracy of this information nor warrant the condition of the vessel. A buyer should instruct his representatives, agents, or his surveyors, to investigate such details as the buyer desires validated. This vessel or yacht is offered subject to prior sale, price change, or withdrawal without notice.



# PHOTOS

**Bow Running Shot**



**Port Bow**



**Starboard Stern**



**Stern**



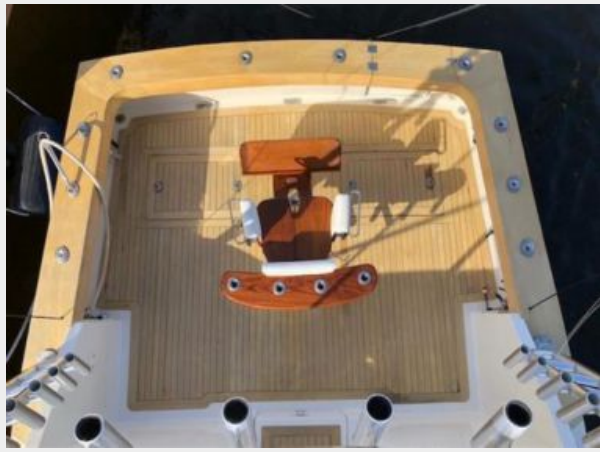
**Cockpit**



**Bluewater Fighting Chair**



**Cockpit Overhead**



**Helm Deck Starboard**



**Helm**



**Helm**



**Helm Chair Detail**



**Helm Deck Seating and Table**





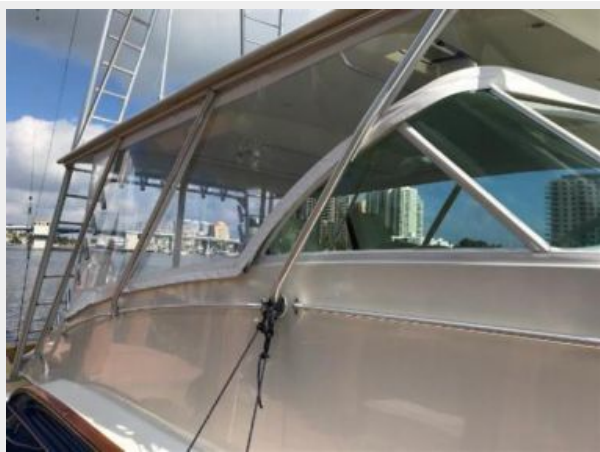
**Helm Deck Seating**



**Helm Deck Refrigerator and Icemaker**



**Starboard Side Detail**



**Windshield Detail**



**Port Side Detail**



**Bow Overhead**



**Anchor and Anchor Windlass**



**Stairway from Helm Deck**



**Starboard Aft Galley**



**Main Salon Couch**



**Main Salon Rod Storage**



**Main Salon Couch**





**Main Salon LCD TV**



**Main Salon Entertainment Equipment**



**Galley**



**Galley Microwave**



**Galley Range**



**VIP Stateroom with Pullman Berth**



**VIP Stateroom TV**



**VIP Stateroom Pullman Berth**



**Forward Master Stateroom**



**Forward Master Stateroom**



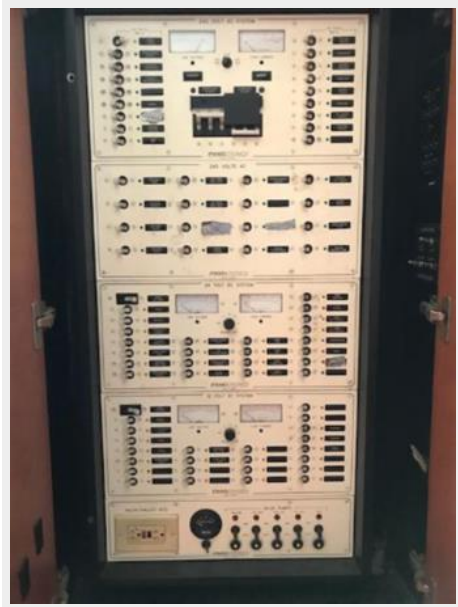
**Master Stateroom En-Suite Head**



**Master Stateroom En-Suite Head**



**Distribution Panel**



**Water Maker**



**Bottom Job 2021**



**Bottom Job 2021**



**Bottom Job 2021**



**Bottom Job 2021**



Bottom Job 2021



Bottom Job 2021



Bottom Job 2021



Bottom Job 2021



Bottom Job 2021





# CONTACTS

---

Andrey Shestakov, leading yacht broker of the sales department of Shestakov Yacht Sales Inc. Shestakov Yacht Sales Inc., the official representative of the Miami/Fort Lauderdale FL headquarters.

## Contact details

---

Email: **andrey@shestakovyachtsales.com**

Web: [shestakovyachtsales.com/en/](http://shestakovyachtsales.com/en/)

## Telephones

---

USA: **+1(954)274-4435**

## Office hours

---

Monday – Saturday: **9:00 - 21:00 EDT**

Sunday: **closed**

## Address

---



Harbour Towne Marina, 850 NE 3rd St,  
STE 213, Dania, FL 33004