

43FT 2003 FOUNTAINE PAJOT BELIZE 43 — FOUNTAINE PAJOT



Builder: FOUNTAINE PAJOT

Year Built: 2003

Model: Catamaran

Price: PRICE ON APPLICATION

Location: United States

LOA: 43' 0" (13.11m)

Beam: 22' 9" (6.93m)

Max Draft: 4' 2" (1.27m)

Our experienced yacht broker, Andrey Shestakov, will help you choose and buy a yacht that best suits your needs 43ft 2003 Fountaine Pajot Belize 43 — FOUNTAINE PAJOT from our catalogue. Presently, at Shestakov Yacht Sales Inc., we have a wide variety of yachts available on our sale's list. We also work in close contact with all the big yacht manufacturers from all over the world.

If you would like to buy a yacht 43ft 2003 Fountaine Pajot Belize 43 — FOUNTAINE PAJOT or would like help answering any questions concerning purchasing, selling or chartering a yacht, please call +1(954)274-4435

TABLE OF CONTENTS

TABLE OF CONTENTS	2
SPECIFICATIONS	4
Overview	4
Basic Information	4
Dimensions	4
Speed, Capacities and Weight	4
Accommodations	4
Hull and Deck Information	5
Engine Information	5
DETAILED INFORMATION	6
Accommodations	6
Galley	6
Electronics	6
Electrical	6
Sails & Rigging	7
Exclusions	7
Disclaimer	7
PHOTOS	8
Salon area - The salon offers a panoramic view, and is located in the center of the boat.	8
Owners cabin - starboard, and is spacious and roomy.	8
Galley - The galley is located up, to starboard and adjacent to the salon.	8
Owner's head and shower - The owner's head and shower are located toward the bow of the starboard hull, with a separated shower. There is also access to the forward crew quarters in front of the shower.	9
Owner's cabin - The area located between the owner's cabin and head consists of a comfortable settee, desk, lockers and a hanging closet.	9
Guest head and shower - The guest head and shower are located in the middle of the port hull, between the 2 cabins.	9
Starboard crew quarters - The crew quarters are located forward of the shower, and may be	

accessed from outside through a hatch.	9
Aft guest cabin - The aft guest cabin is spacious, and has numerous lockers and a hanging closet for storage.	10
Forward guest cabin - The forward guest cabin is a double berth, with a hanging locker for clothing.	10
Port crew quarters - The crew quarters are located forward of the cabin, and can be accessed either from the deck or through the forward cabin.	10
Helm - The helm is located to starboard, and offers unrestricted visibility. There is a raised helmsman's seat.	10
Engine Access - The engines are accessed through the transom steps, and are located under a folding sole.	11
Cockpit entrance - The salon is accessed from the cockpit from the center.	11
CONTACTS	12
Contact details	12
Telephones	12
Office hours	12
Address	12

SPECIFICATIONS

Overview

This one-owner boat has always been maintained, and it shows. The boat was intended for use as a cruiser, and part-time liveaboard. After cruising in the Bahamas it was returned to Charleston.

This is an opportunity to own a clean, well maintained boat that is ready to go. DYSID:3181238

Basic Information

Category: Catamaran

Model Year: 2003

Year Built: 2003

Country: United States

Dimensions

LOA: 43' 0" (13.11m)

LWL: 39' 3" (11.96m)

Beam: 22' 9" (6.93m)

Max Draft: 4' 2" (1.27m)

MFG Length: 42' 6" (12.95m)

Speed, Capacities and Weight

Displacement: 18960 Pounds

Water Capacity: 143 Gallons

Fuel Capacity: 79 Gallons

Accommodations

Total Cabins: 3

Total Berths: 3

Total Heads: 2

Hull and Deck Information

Hull Material: Fiberglass

Engine Information

Engines: 2

Manufacturer: Yanmar

Model: 3GM30

Engine Type: Inboard

Fuel Type: Diesel

DETAILED INFORMATION

Accommodations

- Three cabin owners version
- Two heads and showers
- Master cabin has separate shower
- Large Salon with panoramic view
- Crew quarters forward of cabins in bow
- Numerous lockers and closets located throughout
- Bedflex mattress system
- Numerous portholes and hatches strategically located for ventilation and light

Galley

- Galley up configuration, located to starboard
- ENO propane oven
- ENO 3 burner stove
- Goldstar microwave
- Sea Frost Refrigeration - separate fridge/freezer
- Double Stainless Steel sinks
- Separate dish rack drying area
- Lockers and drawers located throughout

Electronics

- Icom VHF IC-M402
- Raymarine ST60 Multi
- Raymarine RL70 Pathfinder
- Raymarine HF Marine IC M802
- Pioneer SDV-P7
- Icom SP-24 speaker
- Sharp Aquos TV
- Raymarine Pathfinder RL80C
- Raymarine ST6001+ A/P
- Raymarine ST60 Wind
- Raymarine ST60 Multi
- Icom RAM

Electrical

- 120 A/C power
- 12 volt DC power
- 12-volt outlet at helm
- Xantrex Link 10 monitor
- 2 X 30A umbilical cords
- Northern Lights generator (475 hours)

Sails & Rigging

- Fully battened main
- Stack pack
- Roller furling genoa
- Electric primary winch for main halyard
- All lines led to cockpit
- Mainsheet traveler directly behind cockpit
- Fractional rig

Exclusions

Owner's personal belongings.

Disclaimer

The Company offers the details of this vessel or yacht in good faith but cannot guarantee or warrant the accuracy of this information nor warrant the condition of the vessel. A buyer should instruct his representatives, agents, or his surveyors, to investigate such details as the buyer desires validated. This vessel or yacht is offered subject to prior sale, price change, or withdrawal without notice.

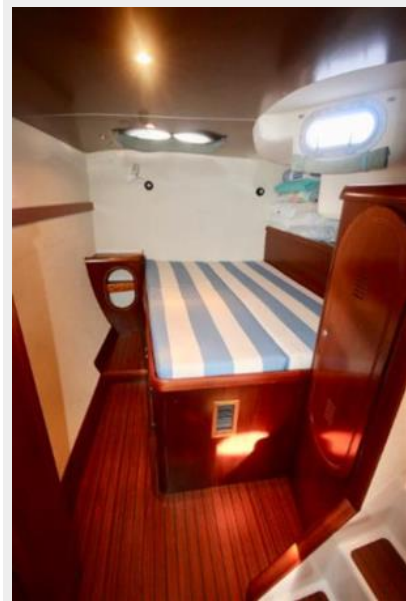
PHOTOS

Salon area - The salon offers a panoramic view, and is located in the center of the boat.



Owners cabin - starboard, and is spacious and roomy.

Galley - The galley is located up, to starboard and adjacent to the salon.



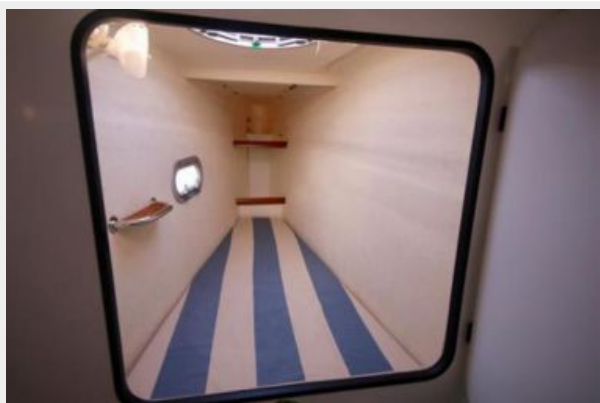
Owner's cabin - The area located between the owner's cabin and head consists of a comfortable settee, desk, lockers and a hanging closet.



Owner's head and shower - The owner's head and shower are located toward the bow of the starboard hull, with a separated shower. There is also access to the forward crew quarters in front of the shower.



Starboard crew quarters - The crew quarters are located forward of the shower, and may be accessed from outside through a hatch.



Guest head and shower - The guest head and shower are located in the middle of the port hull, between the 2 cabins.



Aft guest cabin - The aft guest cabin is spacious, and has numerous lockers and a hanging closet for storage.



Forward guest cabin - The forward guest cabin is a double berth, with a hanging locker for clothing.



Port crew quarters - The crew quarters are located forward of the cabin, and can be accessed either from the deck or through the forward cabin.



Helm - The helm is located to starboard, and offers unrestricted visibility. There is a raised helmsman's seat.



Cockpit entrance - The salon is accessed from the cockpit from the center.



Engine Access - The engines are accessed through the transom steps, and are located under a folding sole.



CONTACTS

Andrey Shestakov, leading yacht broker of the sales department of Shestakov Yacht Sales Inc. Shestakov Yacht Sales Inc., the official representative of the Miami/Fort Lauderdale FL headquarters.

Contact details

Email: andrey@shestakovyachtsales.com

Web: shestakovyachtsales.com/en/

Telephones

USA: +1(954)274-4435

Office hours

Monday – Saturday: **9:00 - 21:00** EDT

Sunday: **closed**

Address



Harbour Towne Marina, 850 NE 3rd St,
STE 213, Dania, FL 33004