

BEQUIA CHIEF — FORMOSA



Builder: FORMOSA

Year Built: 1972

Model: Cruising Sailboat

Price: PRICE ON APPLICATION

Location: United States

LOA: 45' 0" (13.72m)

Beam: 13' 7" (4.14m)

Max Draft: 6' 0" (1.83m)

Our experienced yacht broker, Andrey Shestakov, will help you choose and buy a yacht that best suits your needs **Bequia chief — FORMOSA** from our catalogue. Presently, at **Shestakov Yacht Sales Inc.**, we have a wide variety of yachts available on our sale's list. We also work in close contact with all the big yacht manufacturers from all over the world.

If you would like to buy a yacht **Bequia chief — FORMOSA** or would like help answering any questions concerning purchasing, selling or chartering a yacht, please call **+1(954)274-4435**

TABLE OF CONTENTS

TABLE OF CONTENTS	2
SPECIFICATIONS	3
Overview	3
Basic Information	7
Dimensions	7
Speed, Capacities and Weight	7
Accommodations	8
Hull and Deck Information	8
Engine Information	8
PHOTOS	9
CONTACTS	15
Contact details	15
Telephones	15
Office hours	15
Address	15

SPECIFICATIONS

Overview

You won't find a boat like this just anywhere! This classic has stunning traditional lines, an absolutely beautiful interior, and is tough and ready to go! "Bequia Chief" is an open water cruiser or a great liveaboard.

Teak deck has been replaced with new 3/4" teak as well as the plywood and reglassed before reteaking. There have been many upgrades!

- **7012 Garmin Chart plotter, with 3D charts, 2012**
- **Model 10 wind speed and direction, 2012**
- **Echopilot depth sounder, 2012**
- **XM weather receiver, 2012**
- **Icom AIS receiver/transponder, 2012**
- **Icom VHF with remote station, 2012**
- **MasterVolt 2500 Watt Inverter/100 Amp Charger**
- **Mastervolt AGM Slimline batteries**
- **400 hours since engine rebuild (4,600 before)**
- **Jacklines**
- **2 AC units**
- **Convection oven**
- **Granite countertops**
- **Both heads beautifully tiled**
- **Isotherm refrigerator**
- **2 freezers**
- **Washer/ dryer**
- **Fisher Panda 2014 model 8KW Genset**
- **Vetus bow thruster**

Much more! Call today to see this beauty!

Accommodations

Starting aft - Master Stateroom: Athwartship queen berth is surrounded by six lockers to starboard with fiddled shelf above, book shelf aft, and six lockers to port with fiddled shelf above. Stern windows add light and a "Captain Ron" romance to this stateroom. To starboard you'll find incredible storage with 4 drawers, 6 locker bureau with fiddled shelf above. The portside has a 4 drawer, 4 locker bureau and the built-in Splendide washer/ dryer combo. The bulkhead features a Dickinson solid fuel heater. The settee/ dressing seat just forward of the berth surrounds an expandable drop leaf table that serves as the below decks dining table which easily seats 4-6. The ensuite head is forward to port and has a tiled shower with teak floor grate, granite topped vanity, ss sink, electric full size head, makeup mirror, designer faucet, medicine cabinet, 3

lockers and a mirrored bulkhead locker. Two drop down door lockers access the engine compartment. A deck prism and screened portlight allow light and ventilation. An oil lamp and 12v & 110v fans complete the ambiance.

Walk through to Salon: Outboard side locker houses the generator and has a "hidden" locker above and fiddled shelf on top. Adjacent is a hanging locker with more shelving hullside. Inboard is the drop-down door access to the engine room.

Salon Starboard side: Dedicated nav station with seat, flip up chart table, six upper drawers, storage bin, and 3 drawers below. Here you will find the VHF, SSB, AIS, 12v fan and the electrical panel. Entertainment center is adjacent forward. Further forward is the settee with pilot berth. Three drawer storage under the pilot berth. Drawer and bulk storage under the settee. Bookshelves abound. Carved wood bulkhead with Dickinson diesel heater below.

Portside: Galley at companionway base. Forward of the galley are two reclining chairs, bookshelves outboard, bulkhead storage shelves, plate and dishware storage and a wine glass rack. Oil lamp provides ambiance.

Guest Cabin: Starboard single berth with drawer storage under. Private fully tiled head to port with granite topped vanity, ss sink, 4 lockers, teak grated shower, huge storage shelf, manual head, shaving mirror, deck prism and screened opening port.

Work shop/ storage: Next forward is the sail locker, storage locker and workbench. Full forward is the anchor locker access.

Galley

- **Princess 3 burner gimbaled stove w/ oven**
- **Kenmore convection microwave oven**
- **IsoTherm 12v/110v upright refrigerator/ freezer w/ holding plate**
- **IsoTherm 110v icemaker**
- **Splendide clothes washer/ dryer combo**
- **Double S/S sink**
- **Hot/ cold pressure water**
- **110v water heater & engine heat exchanger**
- **Granite counter tops**
- **Designer faucet set**
- **(8) Lockers, (4) Drawers**
- **(4) Spice racks**
- **Filtered water tap**
- **Built-in trash receptacle**
- **Xintex propane control & fume detector**
- **Copper aft bulkhead**

Electronics and Safety

- **Wood Freeman model 420 autopilot**
- **Garmin 7012 chartplotter/ radar**
- **Danforth Constellation 6" compass w/ hood**
- **Garmin I-10 wind, speed**
- **Echo Pilot forward looking sonar/ depth sounder**
- **ICOM MA-500 AIS transponder**
- **ICOM M424 VHF at nav**
- **ICOM 195 B command mic at helm**
- **ICOM 706 SSB radio w/ AT 130 tuner**
- **KVH Tracvision satellite TV w/ HD antenna**
- **Toshiba TV w/ DVD player**
- **(2) Dish TV receivers**
- **Digital TV antenna**
- **Oregon Scientific 433 weather station**
- **ACR EPIRB 406**
- **Mizzen mounted radar**
- **Ships bell**

Electrical

- **Battery Bank: (3) 200 a/h Mastervolt AGM (house), (1) 150 a/h AGM (genset), (1) 150 a/h AGM (engine), (1) 220 a/h AGM (windlass & bowthruster)**
- **Mastervolt 40 amp automatic battery charger for genset & engine**
- **Mastervolt 2500 watt inverter/100 amp charger (house & bowthruster)**
- **Battery condition monitor**
- **Fischer Panda 8 Kw generator w/ 815 hrs**
- **(2) 75 watt solar panels w/ Mastervolt solar charge controller/ regulator**
- **Wiring was completely re-done in 2012**
- **110v outlet at cockpit**
- **Tripp-Lite interruptible power supply (Monitors bilge pump circuitry)**
- **(2) 50' 30 amp Marinco shore power cables**

Mechanical

- **(2) Webasto reverse cycle AC units - 16k BTU & 5k BTU w/ digital controls**
- **Vetus bowthruster 95KG - 12V**
- **Cruise RO watermaker - 20 gallons per hour (NEW - never used)**
- **Rigid SS fuel and waterlines - each with a manifold system for tank switching & cutting off**
- **Racor fuel filters - engine & genset**
- **1-3/4" SS shaft**
- **Engine gauges for RPM, temp, alternator output and oil pressure**
- **(3) Bilge pumps - 2 automatic, 1 manual**
- **Engine driven emergency bilge pump (needs re-mount)**

- Fuel polishing system
- (1) Electric head (aft), (1) Manual head (forward) w/ Y-valve, macerator & deck pumpout
- Edson steering wheel
- (3) Manual BC fire extinguishers
- Smoke & CO fume detector

Deck and Cockpit

- Ground Tackle: (2) 60# CQR -1 with 300' chain, 1 with 15' chain & 250' rode, (1) 20# hooker
- Simpson Lawrence 519 electric windlass
- Hard dodger & bimini w/ zip-in sail windows
- Classic destroyer wheel w/ teak trim
- Lifeline netting
- Protective S/S bars over hatches
- S/S Swim platform w/ boarding ladder
- Teak capped bulwarks w/ Hawse ports
- BBQ
- Teak rub rail
- (4) Dorade vents
- (2) Winch handles
- Winch covers
- Mooring harness
- 1977 - Boston Whaler 11'4" dinghy
- 2014 - Lehr 15 hp, electric start, propane fueled OB engine w/ 2 - 30# fuel tanks
- Dinghy tow system w/ 110' 3/4 poly and 160' 7/8" rode
- Manual dinghy davits
- OB motor lift & mount
- Winslow 4 man canister type liferaft - covered on foredeck
- Awning over main boom and cockpit
- Teak sampson posts on foredeck
- (4) Fender caddys
- Lifesling system
- MOB pole
- Belaying pins port & starboard
- (5) Deck prisms
- Barge boards port & starboard
- Emergency tiller
- Mast pulpits at main
- Horn
- Cockpit cushions
- Cockpit drink holders
- (6) Life jackets - 2 SOS Defender type, 4 Type 2

- **Search lights w/ remote control**
- **Boat hook**

Sails and Rigging

- **Sail inventory: Main, 130% genoa on Cruising Design furler, spinnaker w/ MPS, staysail, mizzen**
- **Age of sails unknown - Little use since Schurr sails refurbished in 2012 and said were "good to go".**
- **Keel stepped wood mast (main), Deck stepped wood mast (mizzen)**
- **(11) Regular winches**
- **Lazy Jacks for mizzen and main**
- **Windex at masthead**
- **Traveler for main, mizzen and staysail**
- **Rigging inspected by Zern late 2013**
- **Mast steps on main and mizzen**

Basic Information

Category: Cruising Sailboat

Model Year: 1972

Year Built: 1972

Country: United States

Dimensions

LOA: 45' 0" (13.72m)

Beam: 13' 7" (4.14m)

Max Draft: 6' 0" (1.83m)

Speed, Capacities and Weight

Displacement: 42000 Pounds

Water Capacity: 200 Gallons

Holding Tank: 80 Gallons

Fuel Capacity: 200 Gallons

Accommodations

Total Cabins: 2

Total Heads: 2

Hull and Deck Information

Hull Material: Fiberglass

Engine Information

Engines: 1

Manufacturer: Westerbeke

Model: W80

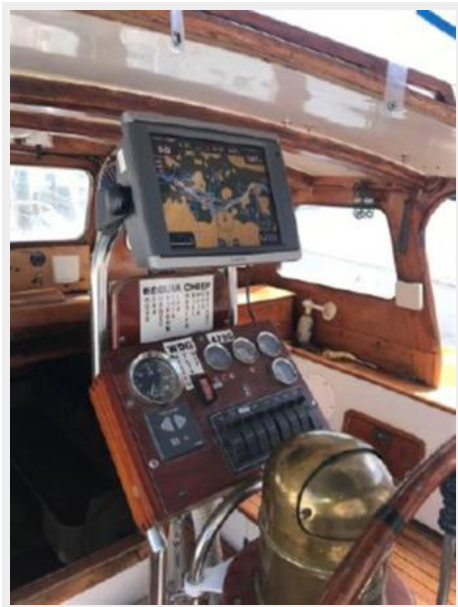
Engine Type: Inboard

Fuel Type: Diesel

PHOTOS

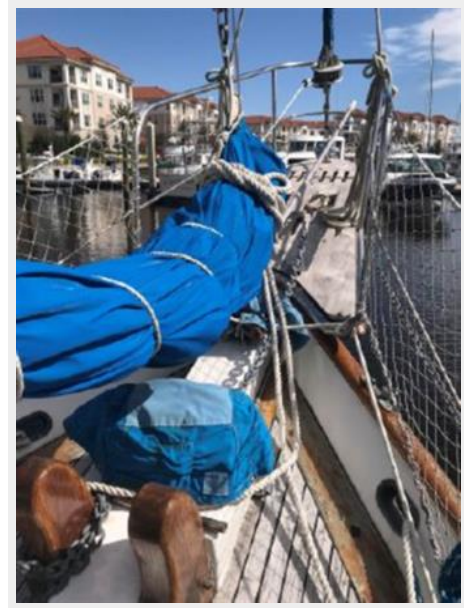












CONTACTS

Andrey Shestakov, leading yacht broker of the sales department of Shestakov Yacht Sales Inc. Shestakov Yacht Sales Inc., the official representative of the Miami/Fort Lauderdale FL headquarters.

Contact details

Email: andrey@shestakovyachtsales.com

Web: shestakovyachtsales.com/en/

Telephones

USA: +1(954)274-4435

Office hours

Monday – Saturday: **9:00 - 21:00** EDT

Sunday: **closed**

Address



Harbour Towne Marina, 850 NE 3rd St,
STE 213, Dania, FL 33004