

## NITSA — SUNSEEKER



**Builder:** SUNSEEKER

**Year Built:** 2017

**Model:** Motor Yacht

**Price:** PRICE ON APPLICATION

**Location:** United States

**LOA:** 95' 0" (28.96m)

**Beam:** 21' 6" (6.55m)

**Max Draft:** 7' 0" (2.13m)

**Cruise Speed:** 22 Kts. (25 MPH)

**Max Speed:** 26 Kts. (30 MPH)

Our experienced yacht broker, Andrey Shestakov, will help you choose and buy a yacht that best suits your needs **NITSA — SUNSEEKER** from our catalogue. Presently, at Shestakov Yacht Sales Inc., we have a wide variety of yachts available on our sale's list. We also work in close contact with all the big yacht manufacturers from all over the world.

If you would like to buy a yacht **NITSA — SUNSEEKER** or would like help answering any questions concerning purchasing, selling or chartering a yacht, please call **+1(954)274-4435**

---

# TABLE OF CONTENTS

---

TABLE OF CONTENTS	2
SPECIFICATIONS	4
Overview	4
Basic Information	4
Dimensions	4
Speed, Capacities and Weight	4
Accommodations	5
Hull and Deck Information	5
Engine Information	5
DETAILED INFORMATION	6
Aft Deck	6
Fly Bridge	6
Pilothouse	7
Salon & Dining	7
Galley	8
On Deck Master	8
Guest Accommodations	8
Deck Equipment	9
Mechanical	9
Electrical Equipment	10
Construction	10
Exclusions	10
Disclaimer	10
PHOTOS	11
CONTACTS	18
Contact details	18
Telephones	18
Office hours	18

---

Address

18

---

# SPECIFICATIONS

---

## Overview

---

### PRISTINE-SHOWS AS NEW

Cutting-edge design plus innovative build processes and all the spacious elegance of its successful predecessor, the 28 Metre Yacht.

Luxurious accommodations for up to 10 with an on deck master suite and 4 double cabins each with en suite head and shower. Crew accommodations are aft. Powered with MTU V12' s @2000 hp each. Many options included.

## Basic Information

---

**Category:** Motor Yacht

**Sub Category:** Flybridge

**Model Year:** 2017

**Year Built:** 2017

**Country:** United States

**Vessel Top:** Hardtop

## Dimensions

---

**LOA:** 95' 0" (28.96m)

**LWL:** 70' 9" (21.56m)

**Beam:** 21' 6" (6.55m)

**Max Draft:** 7' 0" (2.13m)

**MFG Length:** 92' 0" (28.04m)

## Speed, Capacities and Weight

---

**Cruise Speed:** 22 Kts. (25 MPH)

**Cruise Speed Range:** 1250

**Max Speed:** 26 Kts. (30 MPH)

**Displacement:** 186731 Pounds

**Water Capacity:** 462 Gallons

**Fuel Capacity:** 3170 Gallons

---

## Accommodations

---

**Total Cabins:** 5

**Total Heads:** 6

---

## Hull and Deck Information

---

**Hull Material:** Fiberglass

---

## Engine Information

---

**Engines:** 2

**Manufacturer:** MTU

**Model:** 12V

**Engine Type:** Inboard

**Fuel Type:** Diesel

---

## DETAILED INFORMATION

---

### Aft Deck

---

- Teak decking
- Stairs to flybridge
- Aft docking control station (S)
- Aft fixed U-shaped bench seating w/Teak table
- Stern safety gates
- 2 x 24v stern capstan winches
- 24 v Overhead cockpit LED lights
- Low-level courtesy LED lights
- Pair of marine speakers (connected to dedicated CD/radio in salon)
- Remote for CD/radio
- Wetbar w/Icemaker & refrigerator
- Trash bin in wetbar unit

### Fly Bridge

---

- Hard top w/retractable sunroof
- Teak Deck
- Large U-settee w/table
- Storage lockers under seating
- Teak dining table (natural finish) with stainless steel pedestal
- Upholstered sunbathing area aft
- 3 Stool Wet bar w/ Waeco refrigerator, Vitrofrigo Icemaker, Cool box, Kenyon BBQ grill
- Site preparation & wiring for Davit installation plus removable deck rails
- Site preparation, plumbing and wiring for Jacuzzi
- Deckwash outlet
- 24v Low-level LED lighting
- Radar arch structure
- Radar chair with navigation light assembly
- Overhead LED lighting on underside of radar arch (24v)
- Two pairs marine speakers (connected to dedicated CD/radio in salon)

### FLY BRIDGE HELM

- 2 x Helm Seats
- MTU engine controls
- 2 x Simrad 16" Multi-function displays
- Simrad Autopilot
- Simrad 2nd station VHF
- Richie Compass

---

## Pilothouse

---

- 2 x upholstered helm seats
- Console with piano black fascia
- Hydraulic power steering
- 3 Simrad 19" multi-touch display Monitors
- Simrad radar/chartplotter w/GPS
- Simrad Autopilot
- Simrad Depth and speed displays
- Simrad VHF
- Simrad AIS
- Richie Magnetic compass
- Remote spotlight control
- Trim tab controls
- Rudder indicator
- Digital engine instrumentation
- Fresh water gauge
- Fuel gauge
- Main control and monitoring panel (AC/DC) with generators control
- Monitoring panel for fire detection system
- Manual side opening door to starboard side deck
- Observation seat with table on port side
- Air conditioning
- LED overhead lighting (24v)
- Fitted carpet
- Staircase forward leading to optional day head and foyer
- Chart storage area

---

## Salon & Dining

---

- Stainless steel framed sliding patio door to aft cockpit
- Sofa seating
- Coffee table
- Samsung 55" 3D TV on rise and fall
- Harmon Kardon 3D Blu-Ray Cinema surround system
- Air conditioning
- Drinks cabinet with glassware storage for eight LED overhead lighting (24v)
- Sliding doors to starboard exterior balcony
- Formal Dining area w/seating for 10
- Buffet cabinets
- Carpeting
- Day head (starboard foyer)
- Stairway to raised pilothouse

- Access to pantry & galley
- Stairs leading to guest accommodations

## Galley

---

- 2 x Frigoboat refrigerators and freezers
- Miele Convection Oven
- Miele Ceramic Cooktop
- Miele Microwave
- Miele Dishwasher
- Miele Winecooler
- Black Walnut Cabinetry w/granite countertops

## On Deck Master

---

### On Deck Master

- King centerline berth w/storage below
- Foyer dresser drawers
- Night Stands
- Air conditioning
- Settee w/center table
- Samsung 55" 3D TV w/Harmon Kardon 3D Blu-ray Cinema surround system/Apple TV
- LED overhead lighting (24v)
- Fitted carpet
- Forward stairway to Dressing room and Master bath
- Large dressing room w/vanity and hanging lockers
- Master bath w/shower

## Guest Accommodations

---

### MIRROR QUEEN BERTH STATEROOMS-Amidship aft (P & S)

- Athwartship queen berths w/storage below
- 2 x Night stands with storage
- 24v Bedside lights
- Hanging locker
- Samsung 32" HD LED TV w/Harmon Kardon Blu-ray Cinema surround system w/Apple TV
- En Suite Head w/shower

### 2 MIRROR TWIN BERTH STATEROOMS-Amidship forward (P & S)



- 2 x Twin Berths w/storage below
- Hanging locker
- Night stand
- Samsung 32" HD LED TV w/Harmon Kardon Blu-ray Cinema system w/Apple TV
- En suite Head w/shower

---

## Deck Equipment

---

- Teak decking
- Fittings all in 316 stainless steel and chromed bronze
- Pair stainless steel bow mooring bollards and fairleads
- Stainless steel bow roller with anchor stop and devil's claw
- Twin Lewmar windlass
- 2 x 100kg & 50kg claw-type Anchors each w/100' chain
- Stainless steel bow plate
- Deckwash with outlets forward and aft
- Chain locker
- IMCO navigation lights
- Remote controlled spotlight at bow
- 24 vLow-level courtesy LED lights on side decks
- U-shaped bow seat
- 2 x Foredeck sunpads
- 2 x Sonance marine speakers
- Bow teak table (natural finish) with adjustable pedestal
- Glass holders

---

## Mechanical

---

- Twin MTU 12V @2000 hp each
- Sleipner hydraulic Bow & Stern thrusters w/proportional dual control
- Sleipner fin stabilization system
- Separ Fuel polishing system
- Marco electric Oil change system for engines, gearboxes and generators
- Fuel filters/water separators to engines
- Fuel filters/water separators to generators
- Sea Fire FM-200 H-Series fire extinguishing system
- Automatic bilge and flood pumps with high-level alarms
- Plumbing and wiring for watermaker installation
- MarineAir Tropic Spec A/C
- Generator exhaust silencers and water separators
- Engine exhaust dry risers and water injection
- Strainers to all raw water inlets

- Sensor connected to fire detection system

---

## Electrical Equipment

---

- 3 x 20kW @ 50Hz Kohler generators with underwater silent exhaust and sound box
- Kohler power management system
- Dockside AC connections
- Glendinning Cablemaster
- Isolation transformer
- 8 x 24v start-up batteries
- 12 x 24v domestic batteries
- Independent battery back-up for VHF radio
- Atlas Voltage regulator
- 1 x 120 amp battery charger/inverter for 24v circuits
- 1 x 200 amp battery charger/inverter for 24v circuits

---

## Construction

---

- Hand-laid GRP
- Gel coat including stripes
- Vinylester skin coat with powderbound mat
- Stitched multi-axial reinforced single-skin bottom
- Balsa-cored hull topsides
- PVC foam-cored deck and superstructure
- Hull stiffened with longitudinal stringers supported by transverse bulkheads and floors

---

## Exclusions

---

Owner's personal belongings.

---

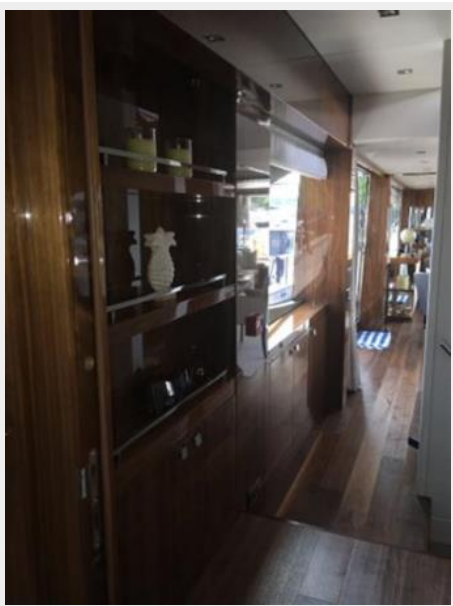
## Disclaimer

---

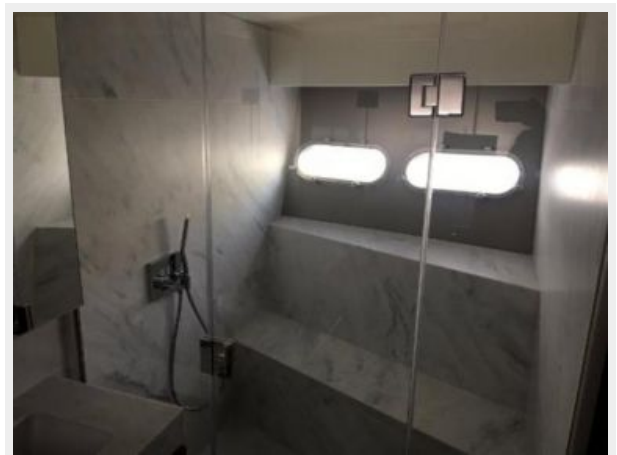
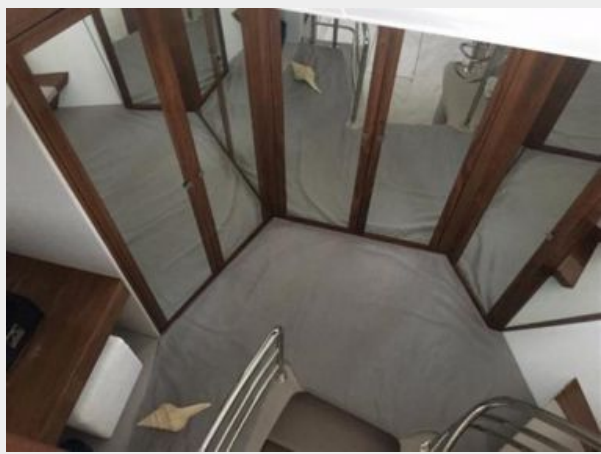
The Company offers the details of this vessel or yacht in good faith but cannot guarantee or warrant the accuracy of this information nor warrant the condition of the vessel. A buyer should instruct his representatives, agents, or his surveyors, to investigate such details as the buyer desires validated. This vessel or yacht is offered subject to prior sale, price change, or withdrawal without notice.

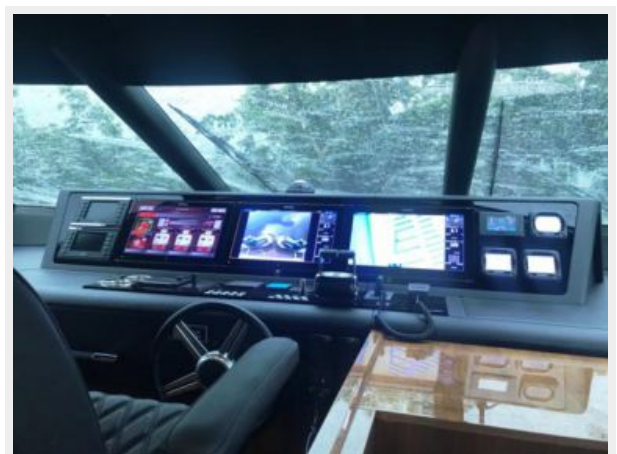
# PHOTOS

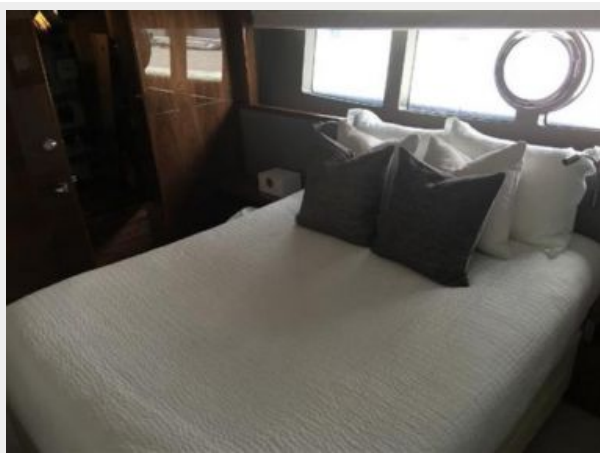
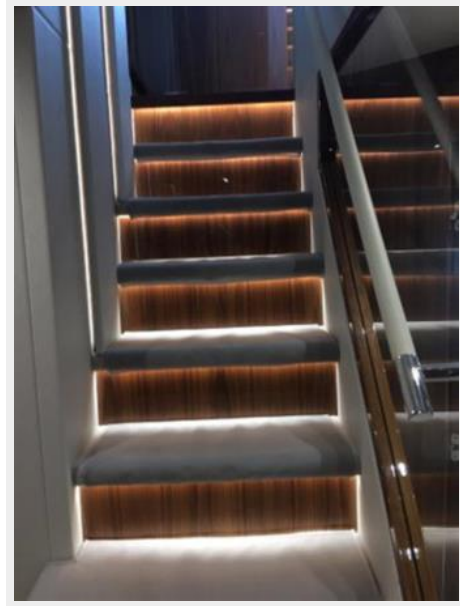
















# CONTACTS

---

Andrey Shestakov, leading yacht broker of the sales department of Shestakov Yacht Sales Inc. Shestakov Yacht Sales Inc., the official representative of the Miami/Fort Lauderdale FL headquarters.

## Contact details

---

Email: [andrey@shestakovyachtsales.com](mailto:andrey@shestakovyachtsales.com)

Web: [shestakovyachtsales.com/en/](http://shestakovyachtsales.com/en/)

## Telephones

---

USA: +1(954)274-4435

## Office hours

---

Monday – Saturday: **9:00 - 21:00** EDT

Sunday: **closed**

## Address

---



Harbour Towne Marina, 850 NE 3rd St,  
STE 213, Dania, FL 33004