

## INSTINCT — CABO



**Builder:** CABO

**Year Built:** 2005

**Model:** Sport Fisherman

**Price:** PRICE ON APPLICATION

**Location:** United States

**LOA:** 35' 0" (10.67m)

**Beam:** 13' 0" (3.96m)

**Min Draft:** 2' 10" (0.86m)

Our experienced yacht broker, Andrey Shestakov, will help you choose and buy a yacht that best suits your needs **Instinct — CABO** from our catalogue. Presently, at Shestakov Yacht Sales Inc., we have a wide variety of yachts available on our sale's list. We also work in close contact with all the big yacht manufacturers from all over the world.

If you would like to buy a yacht **Instinct — CABO** or would like help answering any questions concerning purchasing, selling or chartering a yacht, please call **+1(954)274-4435**

# TABLE OF CONTENTS

TABLE OF CONTENTS	2
SPECIFICATIONS	5
Basic Information	5
Dimensions	5
Speed, Capacities and Weight	5
Accommodations	5
Hull and Deck Information	5
Engine Information	6
DETAILED INFORMATION	7
Salon	7
Galley	7
Stateroom	7
Head	7
Helm Area	8
Electronics	8
Electrical System	9
Engine Room	9
Cockpit	9
Tower	10
Remarks	10
Exclusions	10
Disclaimer	10
PHOTOS	11
Cabin	11
Dinette	11
Dinette	11
Dinette	11
Galley	12

---

Galley	12
Stateroom	12
Galley	12
Stateroom	13
Stateroom	13
Head	13
Head	13
Helm	14
Helm	14
Helm	14
Helm	14
Helm	15
Helm	15
Helm	15
Cockpit	15
Cockpit	15
Cockpit	15
Cockpit	16
Cockpit	16
Cockpit	16
Cockpit	16
Cockpit	17
Cockpit	17
Cockpit	17
Cockpit	17
Cockpit	17
Cockpit	17
Cockpit	18
Cockpit	18

---

---

Bow	18
Bow	18
Bow	19
Bow	19
Bow	19
Engine Room	19
Engine Room	20
Engine Room	20
Engine Room	20
Engine Room	20
Engine Room	21
Engine Room	21
Instinct	21
Instinct	21
Instinct	21
Instinct	21
CONTACTS	22
Contact details	22
Telephones	22
Office hours	22
Address	22

---

# SPECIFICATIONS

---

## Basic Information

---

**Category:** Sport Fisherman

**Sub Category:** Express

**Model Year:** 2006

**Year Built:** 2005

**Country:** United States

## Dimensions

---

**LOA:** 35' 0" (10.67m)

**Beam:** 13' 0" (3.96m)

**Min Draft:** 2' 10" (0.86m)

## Speed, Capacities and Weight

---

**Water Capacity:** 100 Gallons

**Holding Tank:** 16 Gallons

**Fuel Capacity:** 400 Gallons

## Accommodations

---

**Total Cabins:** 1

**Total Heads:** 1

## Hull and Deck Information

---

**Hull Material:** Fiberglass

---

## Engine Information

---

**Engines:** 2

**Manufacturer:** Caterpillar

**Model:** C-9

**Engine Type:** Inboard

**Fuel Type:** Diesel

---

# DETAILED INFORMATION

---

## Salon

---

- Teak and holly sole, with carpeting
- Open air salon
- Teak trim throughout
- Air conditioning
- Lounge converts to pullman
- Hat shelf
- Stereo AM/FM/CD/DVD
- Hanging locker

## Galley

---

- Panasonic microwave/convection oven
- Refrigerator/freezer, side-by-side
- Corian counter tops with sink
- 2-burner stove with cover
- Mirror storage doors
- GFI AC outlet
- Storage shelf
- Sea rails

## Stateroom

---

- Double V berth to port
- Storage drawers under berth
- 17" flat screen LCD TV
- Storage compartments
- Anchor rode access
- Seat
- Hanging locker
- Sun shade
- Stereo speakers
- Air conditioning vent

## Head

---

- Vacu flush head

- Shower stall with door
- Grab rails
- Mirrored door storage
- Teak door
- Vanity
- Sink

---

## Helm Area

---

- Starboard side helm console
- Wrap around windshield with forward and side vents
- Helm deck air conditioning
- Molded hardtop with lighting beneath
- 3 windshield wipers
- Cat ECMs and Cat controls
- Port and starboard forward facing helm seats
- Fusion VD750 stereo
- Drop down footrests
- Upgraded 4 sided enclosure
- Upgraded carpet inlay
- Tackle center
- Rod storage port bench seat
- Powder coated hand rails under hardtop
- Hardtop mounted teaser reels

---

## Electronics

---

Complete electronics upgrade April 2016 by Electronics Unlimited.

- 2 Simrad NSS 16, 16" multi-function displays
- Simrad NSS12, 12" multi-function display, tower
- Simrad O 50 remote
- Simrad BSM-3 broadband blackbox sounder modular
- Airmar CM599C-LHM chirp transducer
- Simrad structure scan transducer
- Simrad halo 4 blackbox radar system
- Simrad AC42 autopilot system
- Simrad WM-3 satellite weather receiver
- Simrad NMEA2000 network
- Simrad AIS transceiver
- 2 Shakespeare 17'6" antennas
- Simrad WiFi module



- Fusion UD-750 marine stereo
- Icom 502 VHF radio

---

## Electrical System

---

- Westerbeake 7.6 kW generator
- Battery charger
- Custom color coated wiring
- Plexiglass wiring covers for protection

---

## Engine Room

---

- Cat C9 engines, hours: 1953 port and 1964 starboard
- Westerbeake 7.6 generator 2306 hours
- Trolling valves
- Oil change system
- Hydraulic helm deck lift system
- Hydraulic steering system
- Upgraded dripless shaft logs with crossovers

---

## Cockpit

---

- Release Marine battle saddle, 2014
- Bait prep center
- Cockpit coaming bolsters
- Fish boxes, insulated, with macerator
- Rod-gaff rack, port and starboard
- Tackle center with 6 drawers
- Fresh and raw water wash downs
- Live well / bait tank, 40 gallon, in transom
- 3 Clearing rod holders, port and starboard
- Aft rail rocket launcher behind hardtop
- Port and starboard DC outlets under gunnel
- Port and starboard storage lockers
- Transom door with top gate
- Cockpit freezer
- Transom bait well
- Cockpit stereo speakers
- Fresh and salt water wash down

---

## Tower

---

- Simrad NSS12 multi-function display
- Fusion stereo remote head
- Outriggers
- Pipewelders gap style tuna tower
- Molded standing platform
- Molded tower sun shade
- Recessed white spreader lights
- Steering station with controls and engine cut off
- Antenna bracket
- Antenna stand off plus 2 halyards
- Bench seat with 72" back rest
- 50" contoured face control box
- Flush mounted black compass
- Anchor light
- Radar box
- Recessed navigation lights
- Pipe work blacked out
- Flush mount courtesy lighting

---

## Remarks

---

The Instinct is a rare one owner, well equipped, pre Brunswick Cabo. She has received numerous upgrades over the last couple of years and is a pleasure to show inside and out. Complete electronic upgrade, April 2016, for over \$40,000.

Owner moving up - Bring offers.

---

## Exclusions

---

Owner's personal belongings.

---

## Disclaimer

---

The Company offers the details of this vessel or yacht in good faith but cannot guarantee or warrant the accuracy of this information nor warrant the condition of the vessel. A buyer should instruct his representatives, agents, or his surveyors, to investigate such details as the buyer desires validated. This vessel or yacht is offered subject to prior sale, price change, or withdrawal without notice.

# PHOTOS

Cabin



Dinette



Dinette



Dinette



**Galley**



**Galley**



**Stateroom**

**Galley**



**Stateroom**



**Stateroom**



**Head**



**Head**



Helm



Helm



Helm



Helm





Helm



Helm



Helm



Cockpit



Cockpit



Cockpit



Cockpit



Cockpit



Cockpit



Cockpit





Cockpit



Cockpit



Cockpit



Cockpit



Cockpit



Cockpit



**Cockpit**



**Cockpit**



**Bow**



**Bow**



**Bow**



**Bow**



**Bow**



**Engine Room**

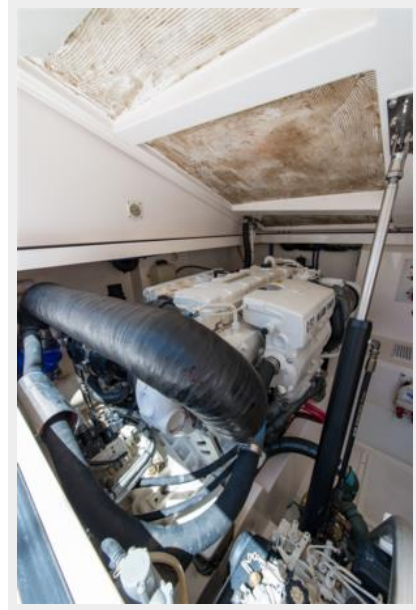




**Engine Room**



**Engine Room**



**Engine Room**



**Engine Room**



**Engine Room**



**Engine Room**



**Instinct**



**Instinct**



**Instinct**



**Instinct**



---

# CONTACTS

---

Andrey Shestakov, leading yacht broker of the sales department of Shestakov Yacht Sales Inc. Shestakov Yacht Sales Inc., the official representative of the Miami/Fort Lauderdale FL headquarters.

---

## Contact details

---

Email: **andrey@shestakovyachtsales.com**

Web: [shestakovyachtsales.com/en/](http://shestakovyachtsales.com/en/)

---

## Telephones

---

USA: +1(954)274-4435

---

## Office hours

---

Monday – Saturday: **9:00 - 21:00** EDT

Sunday: **closed**

---

## Address

---



Harbour Towne Marina, 850 NE 3rd St,  
STE 213, Dania, FL 33004