

ALL THAT JAZZ — HARGRAVE



Builder: HARGRAVE

Year Built: 2008

Model: Motor Yacht

Price: PRICE ON APPLICATION

Location: United States

LOA: 101' (30.78mm)

Beam: 21

Max Draft: 5' 11" (1.8mm)

Cruise Speed: 18 Knots Kts. (21 MPH)

Max Speed: 21 Knots Kts. (24 MPH)

Our experienced yacht broker, Andrey Shestakov, will help you choose and buy a yacht that best suits your needs **All That Jazz — HARGRAVE** from our catalogue. Presently, at Shestakov Yacht Sales Inc., we have a wide variety of yachts available on our sale's list. We also work in close contact with all the big yacht manufacturers from all over the world.

If you would like to buy a yacht **All That Jazz — HARGRAVE** or would like help answering any questions concerning purchasing, selling or chartering a yacht, please call **+1(954)274-4435**

TABLE OF CONTENTS

TABLE OF CONTENTS	2
SPECIFICATIONS	3
Overview	3
Basic Information	3
Dimensions	3
Speed, Capacities and Weight	3
Accommodations	4
Hull and Deck Information	4
Engine Information	4
PHOTOS	5
48	9
CONTACTS	14
Contact details	14
Telephones	14
Office hours	14
Address	14

SPECIFICATIONS

Overview

This is absolutely one of the cleanest & finest 101' Hargraves on the market. **As of Aug., 2019, "All That Jazz" has had new non-skid decks replacing the teak on the walk-around decks plus bow. The house has been painted with Awlgrip. Complete bottom sanding and fresh bottom paint. Plus the stabilizers were rebuilt.** If you read through the listing, you will find the seller has spared no expense updating the entire interior. Plus exterior fabrics and cushions. The entire A/C system was replaced August 2017. There are many new electronics and updated items along with all the recent maintenance. These are all indicated in the listing. The owner has spent approx. \$345,000 over the past 2 years. Easy to show, although owners live aboard so please give as much notice as possible. They are extremely accommodating. Also are not around much over the summer months. May to Mid-Oct.

Basic Information

Category: Motor Yacht

Sub Category: Raised Pilothouse

Model Year: 2008

Year Built: 2008

Country: United States

Dimensions

LOA: 101' (30.78m)

Beam: 21

Max Draft: 5' 11" (1.8m)

Speed, Capacities and Weight

Cruise Speed: 18 Knots Kts. (21 MPH)

Max Speed: 21 Knots Kts. (24 MPH)

Water Capacity: 800 Gallons

Holding Tank: 200 Gal Gallons

Fuel Capacity: 3800 Gal Gallons

Accommodations

Total Cabins: 4

Sleeps: 8

Total Heads: 5

Crew Cabin: 6

Crew Heads: 2

Hull and Deck Information

Hull Material: Fiberglass

Hull Configuration: Modified Deep Vee

Hull Color: White

Interior Designer: Kim K.

Engine Information

Engines: 2

Manufacturer: Caterpillar

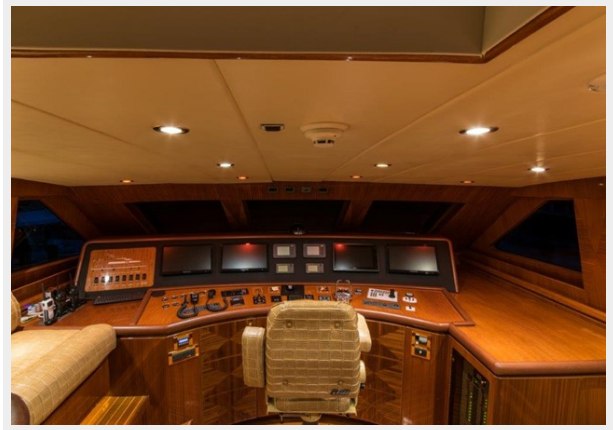
Engine Type: Inboard

Fuel Type: Diesel

PHOTOS







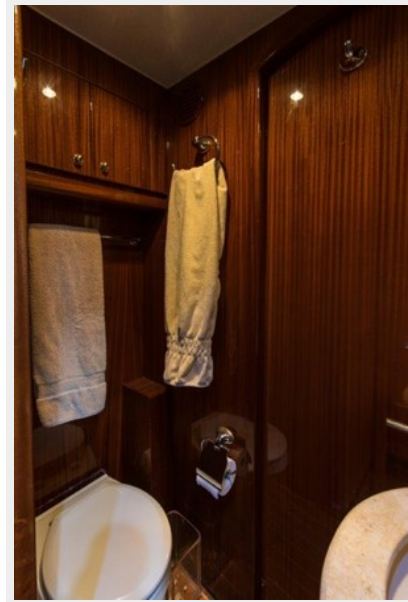


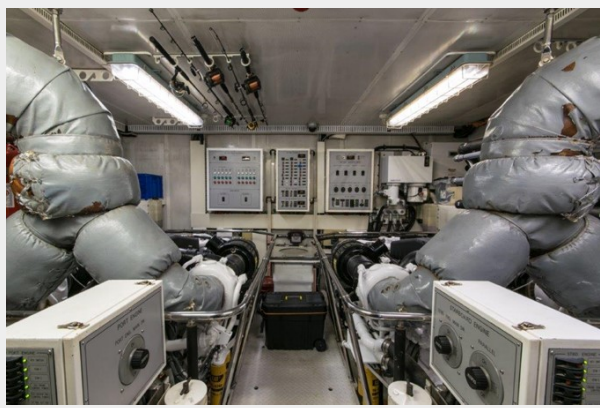


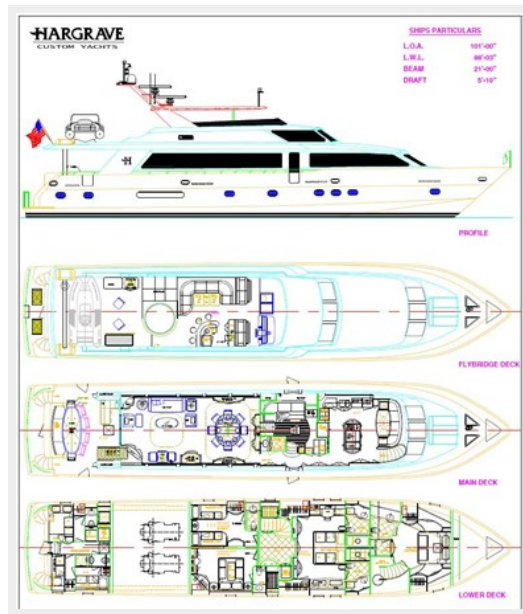
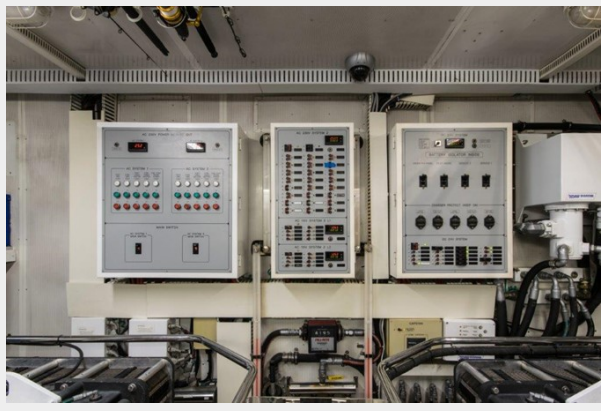
48











CONTACTS

Andrey Shestakov, leading yacht broker of the sales department of Shestakov Yacht Sales Inc. Shestakov Yacht Sales Inc., the official representative of the Miami/Fort Lauderdale FL headquarters.

Contact details

Email: andrey@shestakovyachtsales.com

Web: shestakovyachtsales.com/en/

Telephones

USA: +1(954)274-4435

Office hours

Monday – Saturday: **9:00 - 21:00** EDT

Sunday: **closed**

Address



Harbour Towne Marina, 850 NE 3rd St,
STE 213, Dania, FL 33004