

COMMOCEAN — OCEAN YACHTS



Судостроитель: [Ocean Yachts](#)

Год постройки: 2001

Модель: Sedan

Цена: ЦЕНА ЯХТЫ ПО ЗАПРОСУ

Местонахождение: United States

Длина общая: 52' 0" (15.85m)

Ширина: 16' 4" (4.98m)

Мин. осадка: 4' 4" (1.32m)

Макс. осадка: 4' 4" (1.32m)

Купить commOcean — Ocean Yachts а также выбрать подходящую вам яхту из нашего каталога яхт вам поможет опытный яхтенный брокер Андрей Шестаков. На сегодняшний день компания Shestakov Yacht Sales Inc. имеет большое количество яхт в собственном списке продаж, а также тесно сотрудничает со всеми крупными яхтенными производителями по всему миру.

Для того чтобы купить яхту commOcean — Ocean Yachts а также проконсультироваться по любому вопросу связанному с покупкой, продажей, чартером яхт позвоните по телефону **+7(918)465-66-44**.

ОГЛАВЛЕНИЕ

ОГЛАВЛЕНИЕ	2
ХАРАКТЕРИСТИКИ	6
Обзор	6
Основная информация	6
Размеры	7
Скорость, вместимость и масса	7
Размещение	7
Корпус и палуба	7
Информация о двигателе	7
ПОДРОБНОЕ ОПИСАНИЕ	8
VESSEL WALKTHROUGH	8
Исключения	15
Отказ от ответственности	15
ФОТОГРАФИИ	16
Salon	16
Galley	16
Master Stateroom	16
Flybridge Helm	16
Salon	16
Salon	16
Salon	17
Dinette	17
Galley	17
Galley	17
Master Stateroom	17
Master Stateroom	17
Master Stateroom	18
Master Stateroom	18

Master Stateroom Vanity	18
Master Stateroom	18
Master Stateroom Shower	19
VIP Stateroom	19
VIP Stateroom	19
VIP Stateroom	19
VIP Stateroom	19
VIP Stateroom	19
Master Stateroom Head and Shower	20
VIP Head and Shower	20
VIP Vanity	20
Guest Cabin	20
Guest Cabin	21
Guest Cabin	21
Guest Cabin	21
Guest Cabin	21
Guest Head	22
Guest Shower	22
Guest Vanity	22
Guest Vanity	22
Steps to Salon and Galley	23
Flybridge Forward Seating & new Costa Clear EZ2CY	23
Flybridge Forward Seating & new Costa Clear EZ2CY	23
6 Flybridge Forward Seating & new Costa Clear EZ2CY	23
Flybridge Forward Seating & new Costa Clear EZ2CY	23
New EZ2CY Enclosure 4.2017	23
New EZ2CY Enclosure 4.2017	24
New EZ2CY Enclosure 4.2017	24
New EZ2CY Enclosure 4.2017	24

Flybridge Helm	24
Flybridge Stidd Seats	24
Flybridge Helm	24
Flybridge Refrigerator	25
Flybridge Refrigerator	25
Compass	25
Plexiglass Flybridge Hatch	25
Pompanette Fighting Chair	25
Cockpit	25
Pompanette Fighting Chair	26
Swim Platform and Transom Door	26
Freezer, Sink, Tackle Storage & Engine Room Hatch	26
Freezer, Sink, Tackle Storage & Engine Room Hatch	26
Cockpit Controls	26
Scuba Tank Storage	27
Scuba Tank Compressor	27
Dinghy and OB with Covers	27
Boston Whaler 13 Sport GLS	27
Foredeck	27
Mercury 40 HP 4 Stroke 2012	27
New After Coolers 4.10.18	28
Port Engine	28
Northern Lights Generator & Sounds	28
Northern Lights Generator	28
Northern Lights Generator	28
Watermaker	28
AC Compressors	29
Racor Filters and Oil Change System	29
Oil Change System and Fire System	29

Fuel Polishing System	29
Profile	29
КОНТАКТЫ	30
Контактная информация	30
Телефоны	30
Время работы	30
Адрес	30

ХАРАКТЕРИСТИКИ

Обзор

This Ocean 52 Super Sport, is very lightly fished and extremely clean. Used primarily for family cruising. Heavily upgraded, refitted and modernized by an experienced yachtsman over the past three years.

Owner Moving Up - Will Consider Trades

- New Updated Aftercoolers 3/18
- Northern Lights 12KW Generator 100 Hrs NEW 4/16
- All new batteries April 2018 - 8 New Duracell Ultra Pro Heavy Duty Group 31
- Highly preferred twin Caterpillar 3406 800HP 1975 Hrs
- Garmin 4212 Plotter
- New 3 sided flybridge enclosure 11/16
- Marquipt davit overhauled 8/2018
- Boston Whaler 13 Sport GLS tender on bow
- Mercury 40hp 4 stroke outboard 2012 (approximately 50 hours on motor)
- 4,000 PSI SCUBA compressor with fill station and tank locker
- Swim platform, dive ladder and hot/cold dive shower in transom
- Sea Recovery reverse osmosis water maker
- TracVision satellite T.V. system
- Fighting chair (in storage)
- Outriggers
- Live baitwell

Основная информация

Тип судна: Sedan

Подкатегория: Катер для спортивной рыбалки

Модельный год: 2001

Год постройки: 2001

Страна: United States

Открытая палуба мостика: Да

Размеры

Длина общая: 52' 0" (15.85m)

Ширина: 16' 4" (4.98m)

Мин. осадка: 4' 4" (1.32m)

Макс. осадка: 4' 4" (1.32m)

Длина привального бруса: 52' 0"
(15.85m)

Скорость, вместимость и масса

Водоизмещение: 56000 Pounds

Вместимость воды: 150 Gallons

Вместимость сточного бака: 55 Gallons

Объем топливного бака: 860 Gallons

Размещение

Всего кают: 3

Всего коек: 4

Спальные места: 6

Корпус и палуба

Материал корпуса: Fiberglass

Комплектация корпуса: Modified Deep
Vee

Цвет корпуса: White

Информация о двигателе

Двигатели: 2

Производитель: Caterpillar

Модель: 3406

Тип двигателя: Inboard

Тип топлива: Diesel

ПОДРОБНОЕ ОПИСАНИЕ

VESSEL WALKTHROUGH

This Ocean 52 Super Sport, is very lightly fished and extremely clean. Used primarily for family cruising. Heavily upgraded, refitted and modernized by an experienced yachtsman over the past three years.

Owner Moving Up - Will Consider Trades

- New Updated Aftercoolers 3/18
- Northern Lights 12KW Generator 100 Hrs NEW 4/16
- All new batteries April 2018 - 8 New Duracell Ultra Pro Heavy Duty Group 31
- Highly preferred twin Caterpillar 3406 800HP 1975 Hrs
- Garmin 4212 Plotter
- New 3 sided flybridge enclosure 11/16
- Marquipt davit overhauled 8/2018
- Boston Whaler 13 Sport GLS tender on bow
- Mercury 40hp 4 stroke outboard 2012 (approximately 50 hours on motor)
- 4,000 PSI SCUBA compressor with fill station and tank locker
- Swim platform, dive ladder and hot/cold dive shower in transom
- Sea Recovery reverse osmosis water maker
- TracVision satellite T.V. system
- Fighting chair (in storage)
- Outriggers
- Live baitwell
-

The 52 Ocean Super Sport is a very capable sport fisherman as well as a luxurious and modern cruising yacht. The Ultraleather upholstery, flooring, wall coverings and headliners are in excellent condition throughout the vessel. The 3 stateroom 3 head layout offers very comfortable accommodations in the amidships master and forward VIP staterooms, both with ensuite head &

shower; as well as the port stateroom with over/under bunks and the day head with shower opposite to starboard.

The spacious salon is bright and open and features comfortable seating aft and to port with the entertainment center opposite to starboard. Up 2 very small steps to starboard is the raised dinette with the very functional galley area opposite to port.

The large cockpit is ideal for cruising, fishing, or entertaining. The fighting chair is in storage and the lazarettes have been equipped with a scuba compressor and tank storage. The cockpit also features a 50 amp shore cord on a Glendinning cable reel, aft controls, freezer, sink, tackle storage, transom door, live baitwell, swim platform & hot & cold shower.

The flybridge with hard top with rod holders has a 3 sided enclosure that is new in Nov 2016 (not pictured). There is plenty of flybridge seating forward and to port with the Stidd helm and mate seats located aft. For safety there is a clear Plexiglas hatch above the flybridge ladder.

On the expansive foredeck is the Marquipt davit and Boston Whaler 13 Sport GLS tender with a 2012 Mercury 40HP 4-stroke outboard motor. For cruising and safety there is a bow rail and pulpit with anchor davit and windlass.

commOcean is loaded with excellent equipment, including the 800 HP Caterpillar 3406 motors for good cruising speed and extended trip capacity. The 52 Ocean Super Sport is tops in its class sea keeping capability, cruising amenities, and live aboard accommodations.

Recent Upgrades:

Approximately \$175,000.00 spent in last three years. All receipts available.

\$25,000 designer interior soft goods renewal, upgrade and modernization

New top brand refrigerator and ice maker 5/13

New Northern Lights 12kw generator 4/16 approx 100 hrs

New underwater lights – most powerful in the industry 4/16

New non-skid surfacing throughout 4/16

New Garmin 4212 chart plotter 5/14

New High capacity fuel polisher 5/14

New Stateroom T.V.s 7/16

New clothes washer 7/15

New bait freezer compressor 1/14

New air conditioner compressor 2/16

New fresh water and air conditioner pumps 2/16

New power cord 2/16

New LED lights throughout 1/15

Salon:

Teak and holly design flooring with area rug

Tinted windows and doors

L-shaped sofa with storage

Push button locking hardware

Air conditioning with reverse cycle heat

Hi-gloss high-low table

Custom window blinds throughout

Full sound/entertainment system with remote

Flat screen TV

Icom VHF

Central vacuum system

Galley:

Corian counter top

Convection/microwave oven

Two burner electric cooktop

Upright refrigerator

Ice maker

Trash compactor

Custom window blinds throughout

Water tank gauge

Dinette:

High gloss adjustable table top

Custom window blinds throughout

Master Stateroom:

Full beam mid-ship with island queen berth and private ensuite head with shower

Separately air conditioned

Entertainment sound system

Flat screen TV

His and hers cedar lined hanging lockers

Clear carpet protector throughout

Central vacuum system

Guest Stateroom:

Forward VIP with island queen berth and private ensuite head with shower

Flat screen TV

Cedar lined hanging locker

Separately air conditioned

Clear carpet protector throughout

Central vacuum system

Crew Stateroom:

Over/under bunks

Cedar lined hanging locker

Clear carpet protector throughout

Central vacuum system

Companionway:

Head with enclosed shower

Over/under washer and dryer

Clear carpet protector throughout

Central vacuum system

FlyBridge:

New 3 sided enclosure Nov 2016

Stidd helm mate chairs aft

Comfortable forward seating

Full sound system

Refrigerator

Spotlight

High intensity spreader lights

Helm Electronics:

Raytheon Tridata

Garmin 4212 chart plotter

Furuno NAVnet redundant GPS chart plotter/sonar/fish finder

Simrad Robertson AP20 autopilot

Furuno radar

Icom VHF

Trim Tabs

Engine synchronizer

Trolling valves

Cockpit:

Fighting chair

Bait sink

Tackle station with drawers

Bait freezer

Glendinning cable master

Rod holders (4)

Cockpit controls

Transom gate and door

Live baitwell

Freshwater washdown

Raw water washdown

Scuba tank storage and fill locker for six tanks

4,000 PSI SCUBA tank compressor

Hot and cold dive/swim shower

Deck:

Foredeck Marquipt 800lb davit overhauled 8/2018

13.5' Boston Whaler GLS tender

2012 40hp Mercury motor (approximately 50 hours on motor)

Fortress anchor

Lewmar windlass

Fenders and holders

Engine Room:

Caterpillar 3406 motors (approximately 1955 hours)

New Updated Aftercoolers March 2018

All New Batteries April 2018 - 8 New Duracell Ultra Pro Heavy Duty Group 31

Northern Lights 12kw generator (approximately 950 hours)

Oil exchange system

Sea Recovery water maker

High capacity fuel polisher

Propellers Reconditioned March 2018

Electrical:

All New Batteries April 2018 - 8 New Duracell Ultra Pro Heavy Duty Group 31

New Northern lights 12kw generator 100 Hrs 4/16 AC/DC Panels

50 Amp Shore Cord on Glendinning Cable Reel

Brokers Remarks:

The 52 Ocean Super Sport is beautiful to look and has a great layout. It is equally good for cruising or fishing. commOcean is in excellent condition and well equipped. She is a “must see” if you are in the market for this type of boat.

Исключения

При продаже яхты исключаются личные вещи владельца.

Отказ от ответственности

Компания предоставляет описание судна или яхты добросовестно, но не может гарантировать точность этой информации, а также не ручается за техническое состояние. Покупатель должен проинструктировать своих агентов или оценщиков исследовать представленную информацию более подробно, по собственному желанию. Продажа судна или яхты, изменение цены или снятие с продажи будет происходить без предварительного уведомления.

ФОТОГРАФИИ

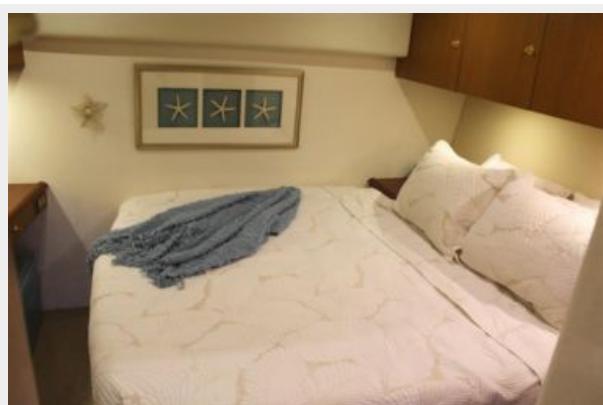
Salon



Galley



Master Stateroom



Flybridge Helm



Salon



Salon



Salon



Dinette



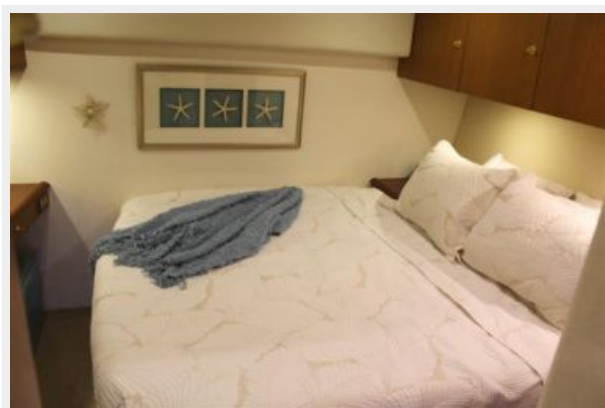
Galley



Galley



Master Stateroom



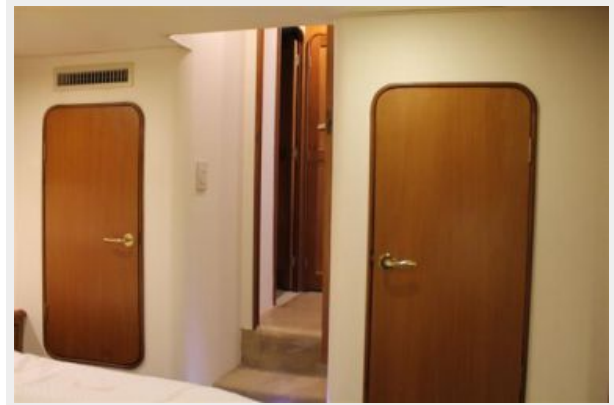
Master Stateroom



Master Stateroom



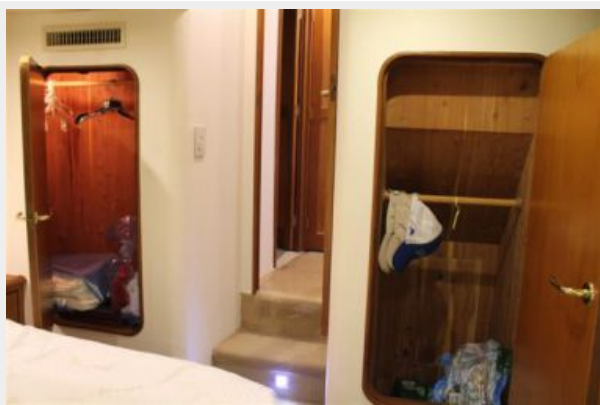
Master Stateroom



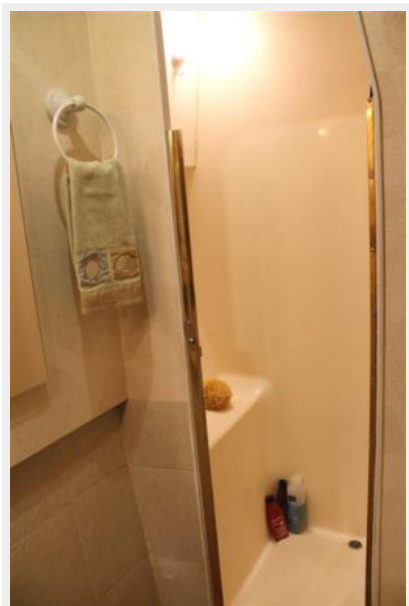
Master Stateroom Vanity



Master Stateroom



Master Stateroom Shower



VIP Stateroom



VIP Stateroom



VIP Stateroom



VIP Stateroom



VIP Stateroom



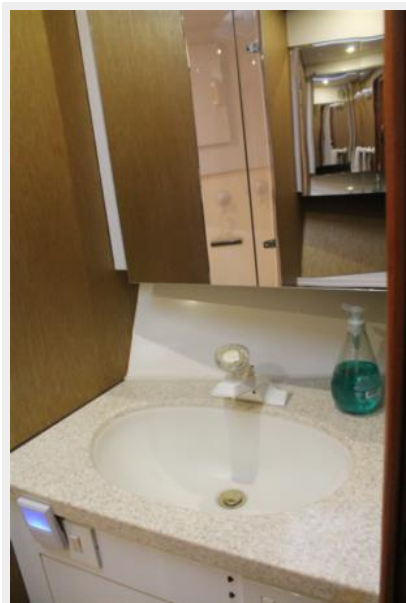
Master Stateroom Head and Shower



VIP Head and Shower



VIP Vanity



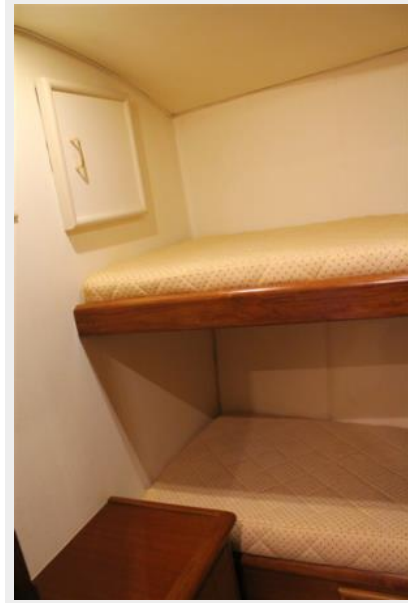
Guest Cabin



Guest Cabin



Guest Cabin



Guest Cabin



Guest Cabin



Guest Head



Guest Shower



Guest Vanity



Guest Vanity



Steps to Salon and Galley



Flybridge Forward Seating & new Costa Clear EZ2CY



Flybridge Forward Seating & new Costa Clear EZ2CY



6 Flybridge Forward Seating & new Costa Clear EZ2CY



Flybridge Forward Seating & new Costa Clear EZ2CY



New EZ2CY Enclosure 4.2017



New EZ2CY Enclosure 4.2017



New EZ2CY Enclosure 4.2017



New EZ2CY Enclosure 4.2017



Flybridge Helm



Flybridge Stidd Seats



Flybridge Helm



Flybridge Refrigerator



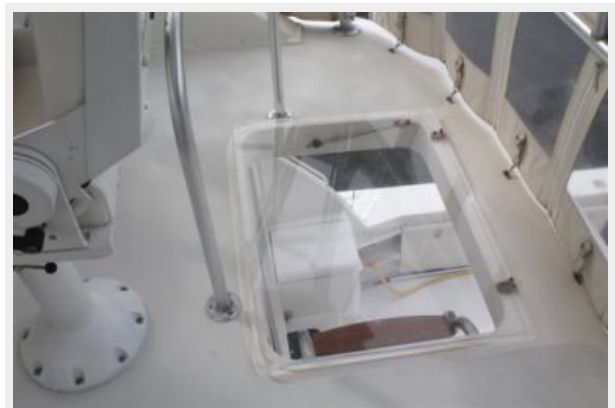
Flybridge Refrigerator



Compass



Plexiglass Flybridge Hatch



Cockpit



Pompanette Fighting Chair



Pompanette Fighting Chair



Swim Platform and Transom Door



Freezer, Sink, Tackle Storage & Engine Room Hatch



Cockpit Controls



Scuba Tank Storage



Scuba Tank Compressor



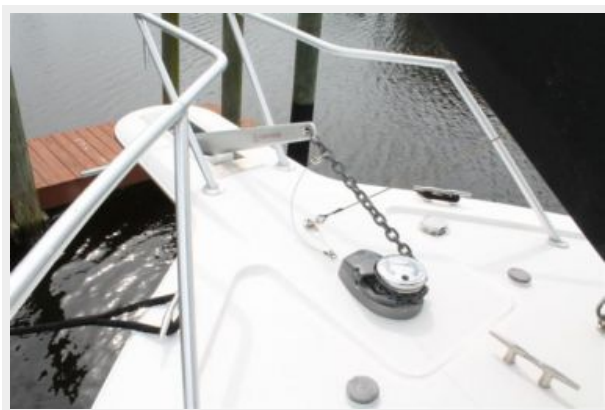
Dinghy and OB with Covers



Boston Whaler 13 Sport GLS



Foredeck



Mercury 40 HP 4 Stroke 2012



Port Engine



New After Coolers 4.10.18



Northern Lights Generator & Sounds



Northern Lights Generator



Northern Lights Generator



Watermaker



AC Compressors



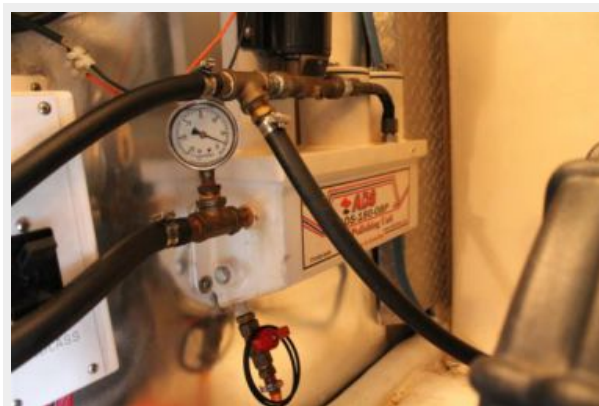
Racor Filters and Oil Change System



Oil Change System and Fire System



Fuel Polishing System



Profile



КОНТАКТЫ

Андрей Шестаков (Andrey Shestakov) – ведущий яхтенный брокер отдела продаж яхт и судов компании Shestakov Yacht Sales Inc. Официальный представитель Shestakov Yacht Sales Inc. для русскоговорящих клиентов в центральном офисе компании в Майами/Форт Лодердейл/Флорида/США.

Контактная информация

Email: andrey@shestakovyachtsales.com

Web: shestakovyachtsales.com

Телефоны

Краснодарский край: **+7(918)465-66-44**

США, Майами, Флорида: **+1(954)274-4435**

Время работы

Понедельник – Суббота: **9:00 - 21:00**
EDT

Воскресенье: **Закрито**

Адрес



Harbour Towne Marina, 850 NE 3rd St,
STE 213, Dania, FL 33004