

ITAMA 75 #11 — ITAMA



Builder: ITAMA

Year Built: 2011

Model: Motor Yacht

Price: PRICE ON APPLICATION

Location: Italy

LOA: 77' 3" (23.54m)

Beam: 19' 6" (5.92m)

Min Draft: 4' 9" (1.44m)

Max Draft: 4' 9" (1.44m)

Cruise Speed: 37 Kts. (43 MPH)

Max Speed: 43 Kts. (49 MPH)

Our experienced yacht broker, Andrey Shestakov, will help you choose and buy a yacht that best suits your needs **ITAMA 75 #11 — ITAMA** from our catalogue. Presently, at Shestakov Yacht Sales Inc., we have a wide variety of yachts available on our sale's list. We also work in close contact with all the big yacht manufacturers from all over the world.

If you would like to buy a yacht **ITAMA 75 #11 — ITAMA** or would like help answering any questions concerning purchasing, selling or chartering a yacht, please call **+1(954)274-4435**

TABLE OF CONTENTS

TABLE OF CONTENTS	2
SPECIFICATIONS	4
Overview	4
Basic Information	4
Dimensions	4
Speed, Capacities and Weight	5
Accommodations	5
Hull and Deck Information	5
Engine Information	5
DETAILED INFORMATION	6
Specifications	6
Exclusions	7
Disclaimer	7
PHOTOS	8
ITAMA 75 Profile For sale	8
Itama 75 2011 Profile. For sale	8
Itama 75 2011 Aft cockpit dining with sliding bench	8
Itama 75 2011 Cockpit	8
Itama 75 2011 for sale cockpit dining	8
Itama 75' bathroom, head. For sale	8
Itama 75 2011 for sale. Sun pad with extended awning.	9
Itama 75 2011 for sale closed awning with seating for 10	9
Itama 75 2011 for sale closed awning with seating for 10	9
Itama 75 2011 for sale. Aft sunpad area	9
Itama 75 2011 for sale master cabin full beam with new carpet	9
Itama 75 2011 for sale master cabin full beam with new carpet	9
Itama 75 2011 for sale forward VIP cabin with ensuite bathroom	10
Itama 75 2011 for sale bathroom	10

2011 Itama 75 for sale twin bed guest cabin with ensuite bathroom	10
2011 Itama 75 for sale forward VIP cabin	10
2011 Itama 75' main salon with new carpet for sale	10
2011 Itama 75 galley kitchen for sale / a vendre	10
2011 Itama 75 forward sun pad on bow handrail	11
2011 Itama 75 for sale - Sheltered cockpit coffee table seating	11
2011 Itama 75 for sale - Engine room MTU diesel engines	11
2011 Itama 75 for sale - driving position bridge helm wheel	11
2011 Itama 75 General Arrangement plan - 3 cabins	12
2011 Itama 75 for sale - Hull repaint June 2018 at Itama service providers in original Itama blue	12
CONTACTS	13
Contact details	13
Telephones	13
Office hours	13
Address	13

SPECIFICATIONS

Overview

The best kept of the very rare ITAMA 75' on the market avoids adverse weather on the thanks to being kept inside a secure warehouse after her repaint in July 2018. The second to none upkeep on board hull #11 will benefit a new owner as the ideal turnkey Mediterranean cruiser. Refit in June 2018 including hull paint, interior carpet replaced, top sides polished for the next owner, this ITAMA 75' has been kept indoors 11 months out of the year and until sold. Key Points:

- Registered below 24 meters
- Stunning example of the stylish Itama 75
- Hull #11
- Meticulously maintained by one private owner since new
- Low engine hours
- Hull repainted June 2018, topsides polished and new carpets fitted
- VAT paid

Basic Information

Category: Motor Yacht

Model Year: 2011

Year Built: 2011

Refit Year: 2018

Refit Type: Repaint, new Carpet, Sanded teak

Country: Italy

Cockpit: Yes

Dimensions

LOA: 77' 3" (23.54m)

Beam: 19' 6" (5.92m)

Min Draft: 4' 9" (1.44m)

Max Draft: 4' 9" (1.44m)

Clearance: 18' 1" (5.50m)

MFG Length: 70' 8" (21.53m)

Speed, Capacities and Weight

Cruise Speed: 37 Kts. (43 MPH)

Cruise Speed Range: 350

Max Speed: 43 Kts. (49 MPH)

Displacement: 252737937.1568 Pounds

Gross Tonnage: 72.19 Pounds

Water Capacity: 264.172052 Gallons

Fuel Capacity: 1452.946286 Gallons

Fuel Consumption: 105.6688208 Gallons

Accommodations

Total Cabins: 3

Total Berths: 4

Sleeps: 6

Total Heads: 3

Crew Cabin: 1

Crew Berths: 2

Crew Sleeps: 2

Crew Heads: 1

Hull and Deck Information

Hull Material: Fiberglass

Deck Material: Fiberglass

Hull Configuration: Planing

Hull Color: Blue

Hull Finish: Fiberglass

Hull Designer: Marco Casali

Exterior Designer: Marco Casali

Interior Designer: Itama

Engine Information

Engines: 3

Manufacturer: MTU

Model: 12V2000M93

Engine Type: Inboard

Fuel Type: Diesel

DETAILED INFORMATION

Specifications

SPECIFICATION

TYPE		Twin Screw, Surface drive, Planning Hull, Motor Yacht					
HULL NUMBER		11					
FLAG		Malta					
CLASSIFICATION RINA		B + F + Aa (sound emission) Registro Italiano Navale,					
HOMOLOGATION		CE 2003 / 44 “A”					
DIMENSIONS		Length O.A.		23.54 mLength W.L.		18.74	
mBeam		5.92 mDraft		1.44 m			
DISPLACEMENT		Unladen		44.50 tonLaden		52.20 ton	
YEAR BUILT		2011					
BUILDER		Itama, Ferretti Group S.p.A, Italy					
HULL DESIGNER		Marco Casali					
INTERIOR DESIGNER		Itama, Ferretti Group S.p.A, Italy					
EXTERIOR DESIGNER		Marco Casali					
CONSTRUCTION		Hull:		Hand-laid GRP			
		Superstructure:		Hand-laid GRP			
		Deck:		Teak / GRP			

MAIN MACHINERY

MAIN ENGINES 2 x1,853 hp MTU Diesel Engines, 12V2000M93

ENGINES HOURS November 2020Port: 400 hrs.Starboard: 400 hrs.

GEARBOXS 2 x ZF Sea Rex 140 surface drive

SHAFTS 2 x Arneson Surface drive

PROPELLERS 2 x 5 blade

SPEED & RANGE Max 42 knots Cruising 37 knots / 350 nautical miles range

FUEL CONSUMPTION Approx. 400 lt / hr at 30 knots

Exclusions

Owner's personal belongings.

Disclaimer

The Company offers the details of this vessel or yacht in good faith but cannot guarantee or warrant the accuracy of this information nor warrant the condition of the vessel. A buyer should instruct his representatives, agents, or his surveyors, to investigate such details as the buyer desires validated. This vessel or yacht is offered subject to prior sale, price change, or withdrawal without notice.

PHOTOS

ITAMA 75 Profile For sale



Itama 75 2011 Profile. For sale



Itama 75 2011 Aft cockpit dining with sliding bench



Itama 75 2011 Cockpit



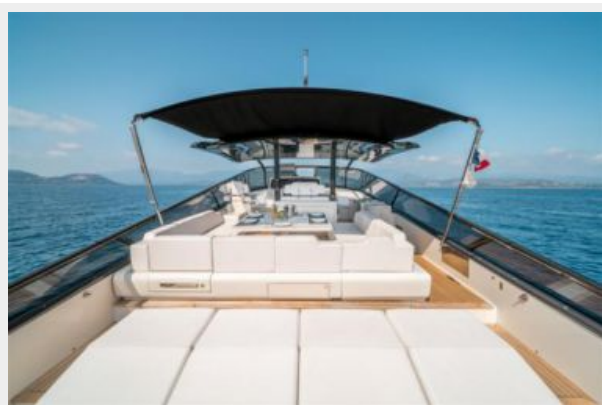
Itama 75 2011 for sale cockpit dining



Itama 75' bathroom, head. For sale



Itama 75 2011 for sale. Sun pad with extended awning.



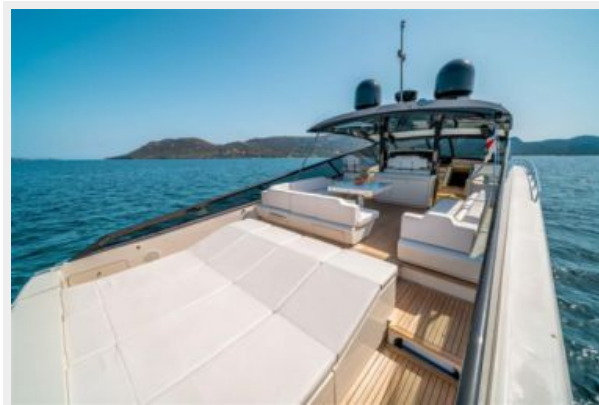
Itama 75 2011 for sale closed awning with seating for 10



Itama 75 2011 for sale closed awning with seating for 10



Itama 75 2011 for sale. Aft sunpad area



Itama 75 2011 for sale master cabin full beam with new carpet



Itama 75 2011 for sale master cabin full beam with new carpet



Itama 75 2011 for sale forward VIP cabin with ensuite bathroom



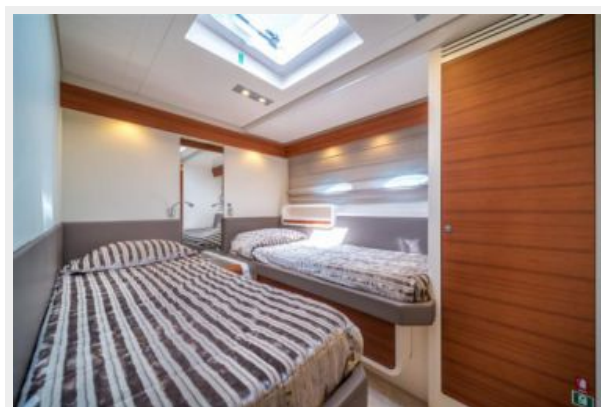
Itama 75 2011 for sale bathroom



2011 Itama 75 for sale forward VIP cabin



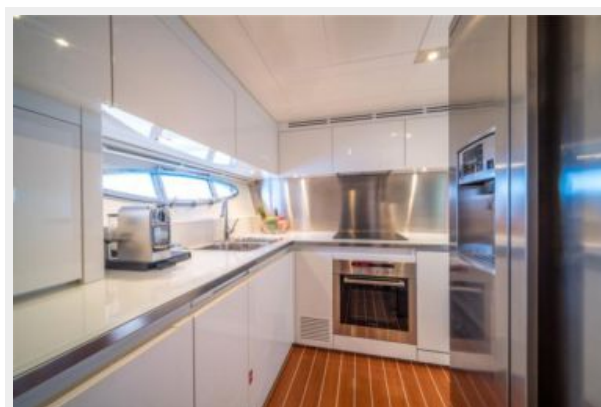
2011 Itama 75 for sale twin bed guest cabin with ensuite bathroom



2011 Itama 75' main salon with new carpet for sale



2011 Itama 75 galley kitchen for sale / a vendre



2011 Itama 75 forward sun pad on bow handrail



2011 Itama 75 for sale - Sheltered cockpit coffee table seating



2011 Itama 75 for sale - driving position bridge helm wheel



2011 Itama 75 for sale - Engine room MTU diesel engines



2011 Itama 75 General Arrangement plan - 3 cabins



2011 Itama 75 for sale - Hull repaint June 2018 at Itama service providers in original Itama blue



CONTACTS

Andrey Shestakov, leading yacht broker of the sales department of Shestakov Yacht Sales Inc. Shestakov Yacht Sales Inc., the official representative of the Miami/Fort Lauderdale FL headquarters.

Contact details

Email:
andrey@shestakovyachtsales.com

Web: shestakovyachtsales.com/en/

Telephones

USA: **+1(954)274-4435**

Office hours

Monday – Saturday: **9:00 - 21:00 EDT**

Sunday: **closed**

Address



Harbour Towne Marina, 850 NE 3rd St,
STE 213, Dania, FL 33004