

SECOND WIND — GEMINI CATAMARANS



Builder: GEMINI CATAMARANS

Year Built: 2003

Model: Catamaran

Price: PRICE ON APPLICATION

Location: United States

LOA: 33' 6" (10.21m)

Beam: 14' 0" (4.27m)

Min Draft: 1' 6" (0.46m)

Max Draft: 5' 6" (1.68m)

Our experienced yacht broker, Andrey Shestakov, will help you choose and buy a yacht that best suits your needs **Second Wind — GEMINI CATAMARANS** from our catalogue. Presently, at Shestakov Yacht Sales Inc., we have a wide variety of yachts available on our sale's list. We also work in close contact with all the big yacht manufacturers from all over the world.

If you would like to buy a yacht **Second Wind — GEMINI CATAMARANS** or would like help answering any questions concerning purchasing, selling or chartering a yacht, please call **+1(954)274-4435**

TABLE OF CONTENTS

TABLE OF CONTENTS	2
SPECIFICATIONS	3
Overview	3
Basic Information	4
Dimensions	4
Speed, Capacities and Weight	5
Accommodations	5
Hull and Deck Information	5
Engine Information	5
PHOTOS	6
CONTACTS	13
Contact details	13
Telephones	13
Office hours	13
Address	13

SPECIFICATIONS

Overview

The nicest Gemini catamaran on the market. Just listed March 2018. Fresh water kept until October 2016 where she was sailed down from Canada. Lots of outstanding upgrades! **FRESH BOTTOM JOB AND HULL BUFF 'n WAX (March 2018) 16K BTU Reverse Cycle AC/HEAT (2017) UPGRADES in 2016 Raymarine A95 Multi-Function Chartplotter w/Wi-Fi North America and Bahamas SD Chip Lewmar Windlass w/45 lb Rocna and Delta 35 lb anchors New Running Rigging Side Enclosures Xantrex Invertor SW2000 Pro Watt Rectangular Magma Propane BBQ Grill Helm Seat and Cockpit Cushions Nicro Solar Vents Lots of LED Lighting Four (4) Marine Deep Cycle Batteries and lots more...**

Call us for more info and to schedule an appointment to see this gem of a Gemini.

Engines

Engine 1: Engine Brand: Westerbeke Year Built: 2003 Engine Model: 30 B 3 Engine Type: Inboard Engine/Fuel Type: Diesel Engine Power: 27 HP Hours: 1233 Tachometer, Temperature Gauge, Oil Pressure and Voltage Heat Exchange Professionally Flushed (Summer 2016) Racor R15T Fuel Filter with Sight Glass (Summer 2016) Oil Changed Every 100 Hrs Many Spare Parts including Water Pump, Solenoid for Glow Plug, Filters, Oil, Anodes, Impellers, Belts.

Tankage

Fresh Water Tanks: 2 x 30 gallon Fuel Tanks: 2 x 18 gallon Black Water Holding: 18 gallon

Accommodations

Number of double berths: 4 Number of cabins: 3 Number of heads: 1

Galley

Voyager 2 burner propane stove with oven and broiler Double stainless steel sink Large refrigerator - 110 VAC and Propane Ample counter space Plenty of storage in galley Both Fresh and Salt Pressurized Supplies Hot 'n Cold Pressurized Water 700W Microwave Oven (Summer 2016)

Electronics

Raymarine A95 Multifunctional Chartplotter w/Wi-Fi (new in Summer 2016) SD Chips for North America and Bahamas Raymarine ST60 Wind Speed and Direction Raymarine ST60 TRIDATA (Depth, Speed, Sea Temp) Raymarine ST4000+ Autopilot Sony CDX-CA700X Stereo w/four speakers (cockpit and interior) Presonic VHF Radio LTD1025 Samsung 19 inch HD Flat Panel

TV w/HDMI input

Electrical

Blue Sky Solar Regulator w/Remote 130W Solar Panel on Davit Four (4) Marine Deep Cycle Batteries (Summer 2016) Zantrex SW2000 Pro Watt Invertor (Summer 2016) Zantrex True Charge 20A Charger AC / DC Control Panels FireBoy S-2A Propane/CNG Fume Detector Lots of LED Lighting Throughout Solar Powered Nicro Vents

Ground Tackle

Newmar Windlass 1000 (Summer 2016) Remote for Windlass Rocna 45 lb Anchor primary (Summer 2016) Delta 35 lb Anchor 75 Feet G4 Chain and 150 Rode

Exclusions

Dinghy and Outboard Do Not Convey but Possibly Negotiable Outside Cooler

Broker Comments

If you're in the market for a Gemini Catamaran you won't find one in better condition. Fresh Bottom Job and Hull Buff 'n Wax in March 2018. New AC Install in 2017.

Basic Information

Category: Catamaran

Model Year: 2003

Year Built: 2003

Country: United States

Dimensions

LOA: 33' 6" (10.21m)

LWL: 31' 9" (9.68m)

Beam: 14' 0" (4.27m)

Min Draft: 1' 6" (0.46m)

Max Draft: 5' 6" (1.68m)

Speed, Capacities and Weight

Displacement: 9600 Pounds

Water Capacity: 60 Gallons

Holding Tank: 18 Gallons

Fuel Capacity: 36 Gallons

Accommodations

Total Cabins: 3

Total Heads: 1

Hull and Deck Information

Hull Material: Fiberglass

Engine Information

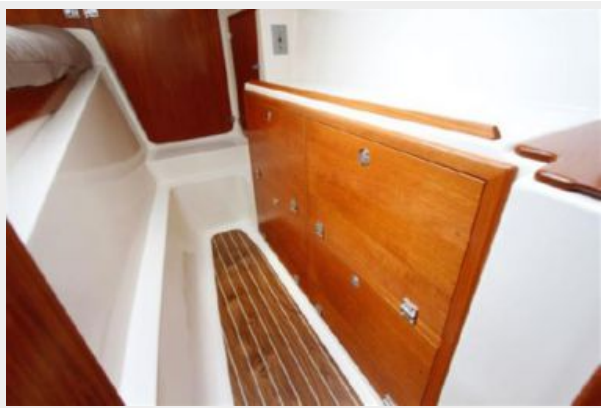
Engines: 1

Manufacturer: Westerbeke

Model: 30 B 3

PHOTOS















CONTACTS

Andrey Shestakov, leading yacht broker of the sales department of Shestakov Yacht Sales Inc. Shestakov Yacht Sales Inc., the official representative of the Miami/Fort Lauderdale FL headquarters.

Contact details

Email: andrey@shestakovyachtsales.com

Web: shestakovyachtsales.com/en/

Telephones

USA: +1(954)274-4435

Office hours

Monday – Saturday: **9:00 - 21:00** EDT

Sunday: **closed**

Address



Harbour Towne Marina, 850 NE 3rd St,
STE 213, Dania, FL 33004