

PROZAC — HATTERAS



Builder: HATTERAS

Year Built: 2014

Model: Motor Yacht

Price: PRICE ON APPLICATION

Location: United States

LOA: 60' 0" (18.29m)

Beam: 18' 2" (5.54m)

Max Draft: 4' 6" (1.37m)

Cruise Speed: 26 Kts. (30 MPH)

Max Speed: 32 Kts. (37 MPH)

Our experienced yacht broker, Andrey Shestakov, will help you choose and buy a yacht that best suits your needs **Prozac — HATTERAS** from our catalogue. Presently, at Shestakov Yacht Sales Inc., we have a wide variety of yachts available on our sale's list. We also work in close contact with all the big yacht manufacturers from all over the world.

If you would like to buy a yacht **Prozac — HATTERAS** or would like help answering any questions concerning purchasing, selling or chartering a yacht, please call **+1(954)274-4435**

TABLE OF CONTENTS

TABLE OF CONTENTS	2
SPECIFICATIONS	6
Overview	6
Basic Information	6
Dimensions	6
Speed, Capacities and Weight	6
Accommodations	7
Hull and Deck Information	7
Engine Information	7
DETAILED INFORMATION	8
Salon	8
Dinnette Features	8
Galley	8
Master Stateroom	8
Master Head	9
VIP Stateroom	9
VIP Guest Head	9
Guest Stateroom	9
Electronics	9
Aft Deck/ Sport Deck	10
Flybridge and Bridge Deck	10
Electrical / Mechanical Equipment	10
Outside Equipment/Extras	11
Performance Notes	11
Engine Room	11
Options	11
Exclusions	12
Disclaimer	12

PHOTOS	13
Profile	13
Profile	13
Profile	13
Profile	13
Profile	13
Profile	13
Profile	14
Saloon	14
Saloon	14
Saloon	14
Dinette	14
Galley seating	14
Saloon	15
Saloon	15
Saloon	15
Galley	15
Galley	15
Galley	15
Galley	16
Galley	16
Galley	16
Galley	16
Galley	16
Saloon	16
Saloon	17
Saloon	17
Saloon	17
Stairs to staterooms	17

Stateroom	17
Stateroom	17
Stateroom	18
Stateroom	18
Stateroom	18
Head	18
Head	18
Head	18
Stateroom	19
Stateroom	19
Twin cabin	19
Twin cabin	19
Head	19
Head	19
Head	20
Flybridge	20
Flybridge	20
Helm station	20
Helm station	20
Helm station	20
Helm station	21
Helm station	21
Helm station	21
Helm station	21
Helm station	21
Helm station	21
Helm station	21
Helm station	21
Helm station	22
Stairs to stern	22
Stern	22

Stern	22
Stern seating	22
Engine room	22
Engine room	23
Engine room	23
Engine room	23
Engine room	23
CONTACTS	24
Contact details	24
Telephones	24
Office hours	24
Address	24

SPECIFICATIONS

Overview

60' Hatteras Motoryacht 2014

Open trade-ins. Financing is available. Motivated Seller, this needs to be the next Hatteras sold!

Boat was recently gone through to prepare for sale. Items include: - Prop balance - New radar - All services (engines + generators) - Detailed interior - Revised mechanics & systems - Fire inspection - New exterior upholstery (Silvertech)

Basic Information

Category: Motor Yacht

Sub Category: Flybridge

Model Year: 2014

Year Built: 2014

Country: United States

Vessel Top: Hardtop

Fly Bridge: Yes

Dimensions

LOA: 60' 0" (18.29m)

Beam: 18' 2" (5.54m)

Max Draft: 4' 6" (1.37m)

Speed, Capacities and Weight

Cruise Speed: 26 Kts. (30 MPH)

Max Speed: 32 Kts. (37 MPH)

Displacement: 87700 Pounds

Water Capacity: 250 Gallons

Holding Tank: 100 Gallons

Fuel Capacity: 1000 Gallons

Accommodations

Total Cabins: 3

Total Berths: 6

Sleeps: 6

Total Heads: 2

Hull and Deck Information

Hull Material: Fiberglass

Hull Configuration: Deep Vee

Engine Information

Engines: 2

Manufacturer: Caterpillar

Model: C-18

Engine Type: Inboard

Fuel Type: Diesel

DETAILED INFORMATION

Salon

- UPGRADED- Custom leather sofa L-shaped with storage
- Bose Lifestyle 35 home theater with CD/DVD and surround speakers
- LED lighting throughout
- All windows have blinds
- Padded panel headliner
- 36" LCD flat screen TV
- UPGRADED Amitco Vinyl flooring

Dinette Features

- Custom marble dinette with L-shaped leather seating and storage underneath
- All LED lighting with steps to tower companionway
- Dinette L-shape with storage

Galley

- UPGRADE - Open galley with custom marble, island, and stainless steel sink
- UPGRADE- Stainless wine cooler
- UPGRADE- Dish washer
- Microwave/convection oven
- UPGRADE (4) sub zero refrigerator/freezers
- 4-burner ceramic cook top
- Pantograph door starboard side
- Amtico strip flooring

Master Stateroom

- Custom upholstered headboard
- UPGRADE- Full beam master suite with opening port lights on both sides
- King size berth with upgraded mattress
- Nightstands with drawers
- Vanity and stool
- Twin cedar-lined wardrobes upgraded
- TV and Bose surround sound system
- Dresser with drawers both port and starboard
- Twin cedar-lined wardrobes

- Mirrors

Master Head

- Private ensuite head with Amitco strip floors
- Mirrored ceiling
- Upgraded marble counter tops
- UPGRADE Dual vessel sink and vanity cabinet
- Large separate shower with seat
- UPGRADE out of the wall faucets

VIP Stateroom

- Queen size berth with upholstered headboard
- Cedar-lined storage underneath
- Cedar-lined hanging locker
- Night stands port and starboard
- 19" LCD TV with DVD stereo
- All LED lighting
- Private access to head

VIP Guest Head

- Access from both the VIP Stateroom and the companionway
- Amtico strip flooring
- LED lighting
- Upgraded marble counter tops
- Stall shower with door
- Base cabinet with storage
- Upgraded wall covering

Guest Stateroom

- Top & Bottom Bunk Bed
- 19" LCD TV with DVD stereo
- Cedar lined closet space
- All LED Lighting

Electronics

- (2) 15' Garmin 3D with plotter
- Furuno sounder
- Garmin Gst, 6 kw HD radar open array
- SAT TV KVH
- Simrad auto pilot
- Icom VHF
- (2) cameras on both port and starboard sides and (1) camera in the engine room
- Eprib Globafix IPro

- Clarion CD player
- JL Cockpit speakers
- Compass
- Furuno Depthsounder
- Log-speedometer
- Navigation center
- Repeater(s)

Aft Deck/ Sport Deck

- Transom door
- Port and starboard gates
- UPGRADE - (2) retractable shore cord
- Hatch to bridge
- UPGRADE - (5) blue under water lights
- Molded fiberglass stairway to flybridge

Flybridge and Bridge Deck

- UPGRADE - 1000 lb hydraulic davit
- UPGRADE- BBQ grill
- UPGRADE - Refrigerator
- UPGRADE - Icemaker
- UPGRADE - Custom Release helm chairs
- UPGRADE - Lounge seating with custom Release Marine table
- UPGRADE - Recessed Tri-color LED lighting
- UPGRADE - enclosure
- Tri-color LED lights for hard top

Electrical / Mechanical Equipment

- 20 gallon hot water heater

- 240v automatic battery charger
- Automatic battery paralleling system
- Sidepower Bow thruster
- Oil changing system
- Engine gears
- Generator exhaust/water separator
- UPGRADE - (2) 21.5 kw Onan fresh water-cooled electronic quiet diesel generators
- Fiberglass air intake system for engine room
- FM 200 fixed fire extinguishing system for engine compartment
- 40 gallon and hour water maker
- 8.0 Inverter with battery bank for operation of water pump, all gallery refrigeration, and salon entertainment equipment
- Shore power inlet

Outside Equipment/Extras

- Cockpit shower
- Cockpit cushions NEW Silvertex
- Cockpit table
- Swimming ladder

Performance Notes

- Cruise Low- 20 knots
- Cruise Long Range- 9.2 knots/ 1090 miles
- Cruise High- 26+ knots
- Max Speed- 30+ knots

Engine Room

- Entrance through both the aft deck hatch or the optional bustle door from the transom
- Spacious with 6'11" head room
- Unhindered access to the upgraded twin CAT C-18 engine with 1150hp each

Options

- 2nd 21.5 kw Onan generator
- Polished plow anchor
- (2) Release tables on Cockpit and Bridge - custom blue LED lights all along the edge
- Exterior Forward Entry Door Selection

- Engine Selection (CAT C-18 1135 BHP)
- Wood and Finish Selection (African Mahogany Satin - Horizontal Grain and Dark Molding)
- Bow Thruster
- Additional Generator Selection (Generator, Single 21kw, Standard)
- Aft Deck Bustle Gates
- Aft Deck Boarding Ladder, Tide Ride Sea Stairs with Storage Bracket
- Flybridge Refrigerator/Icemaker Combo Unit
- Bow Deck Freshwater Wash Down, Additional Outlet
- Galley Wine Cooler
- Bow Stateroom TV, 19" LCD with DVD Stereo in lieu of AM/FM/CD Stereo
- Galley Oven
- Galley Dishwasher Selection
- Galley Icemaker
- Oil Changing System Engines/Gear/Generator
- Generator Exhaust/Water Separator
- Companionway Washer/Dryer
- Bow Deck Cushions to Convert Forward Seat to Sunpad
- Aft Deck Retractable Shorecords (2) in Lieu of Fixed Inlets
- Flybridge Grill with Cabinet
- Aft Deck Hatch to Flybridge
- Aft Deck Hand-Held Shower
- Master Stateroom HMC System 3 King Mattress
- Master Head Plexi Mirrored Ceiling
- Watermaker Selection (8.0 Watermaker, 800 GPD, Sea Recover)
- Flybridge Air Conditioning

Exclusions

Owner's personal belongings.

Disclaimer

The Company offers the details of this vessel or yacht in good faith but cannot guarantee or warrant the accuracy of this information nor warrant the condition of the vessel. A buyer should instruct his representatives, agents, or his surveyors, to investigate such details as the buyer desires validated. This vessel or yacht is offered subject to prior sale, price change, or withdrawal without notice.

PHOTOS

Profile



Profile



Profile



Profile



Profile



Profile



Profile



Saloon



Saloon



Saloon



Dinette



Galley seating



Saloon



Saloon



Saloon



Galley



Galley



Galley



Galley



Galley



Galley



Galley



Galley



Saloon



Saloon



Saloon



Saloon



Stairs to staterooms



Stateroom



Stateroom



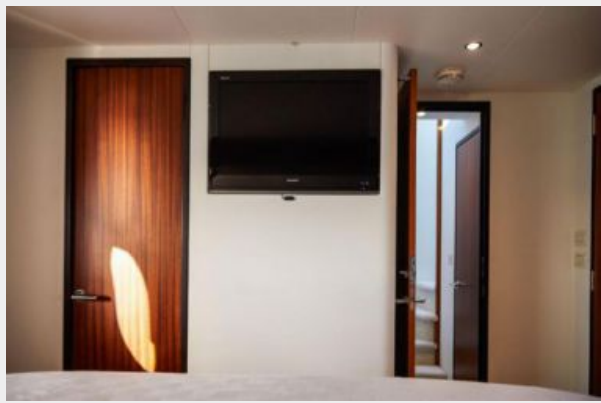
Stateroom



Stateroom



Stateroom



Head



Head



Head



Stateroom



Stateroom



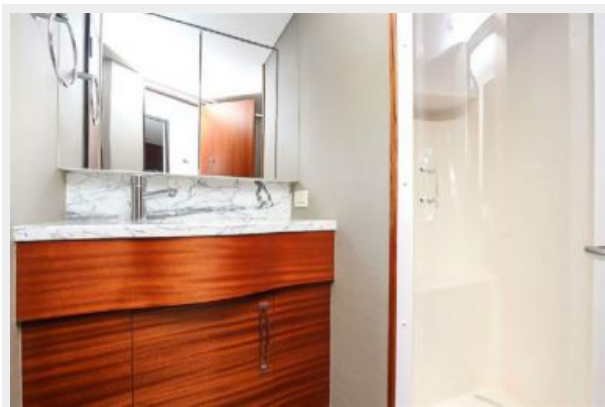
Twin cabin



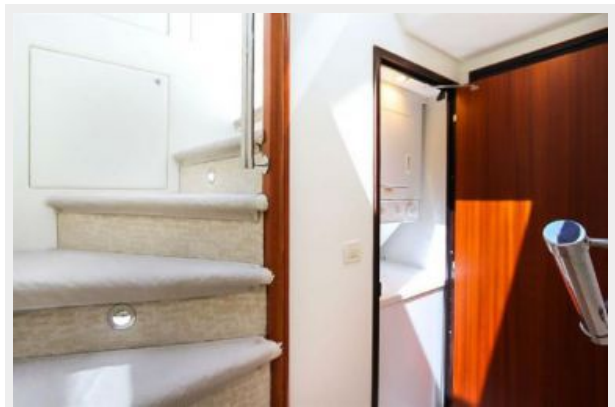
Twin cabin



Head



Head



Head



Flybridge



Flybridge



Helm station



Helm station



Helm station



Helm station



Helm station



Helm station



Helm station



Helm station



Helm station



Helm station



Stairs to stern



Stern



Stern



Stern seating



Engine room



Engine room



Engine room



Engine room



Engine room



CONTACTS

Andrey Shestakov, leading yacht broker of the sales department of Shestakov Yacht Sales Inc. Shestakov Yacht Sales Inc., the official representative of the Miami/Fort Lauderdale FL headquarters.

Contact details

Email: andrey@shestakovyachtsales.com

Web: shestakovyachtsales.com/en/

Telephones

USA: +1(954)274-4435

Office hours

Monday – Saturday: **9:00 - 21:00** EDT

Sunday: **closed**

Address



Harbour Towne Marina, 850 NE 3rd St,
STE 213, Dania, FL 33004