

PROZAC — HATTERAS



Судостроитель: HATTERAS

Год постройки: 2014

Модель: Моторная яхта

Цена: **ЦЕНА ЯХТЫ ПО ЗАПРОСУ**

Местонахождение: United States

Длина общая: 60' 0" (18.29m)

Ширина: 18' 2" (5.54m)

Макс. осадка: 4' 6" (1.37m)

Крейс. скорость: 26 Kts. (30 MPH)

Макс. скорость: 32 Kts. (37 MPH)

Купить **Prozac — HATTERAS** а также выбрать подходящую вам яхту из нашего каталога яхт вам поможет опытный яхтенный брокер Андрей Шестаков. На сегодняшний день компания **Shestakov Yacht Sales Inc.** имеет большое количество яхт в **собственном списке продаж**, а также тесно сотрудничает со всеми крупными яхтенными производителями по всему миру.

Для того чтобы купить яхту **Prozac — HATTERAS** а также проконсультироваться по любому вопросу связанному с покупкой, продажей, чартером яхт позвоните по телефону **+7(918)465-66-44**.

ОГЛАВЛЕНИЕ

ОГЛАВЛЕНИЕ	2
ХАРАКТЕРИСТИКИ	6
Обзор	6
Основная информация	6
Размеры	6
Скорость, вместимость и масса	6
Размещение	7
Корпус и палуба	7
Информация о двигателе	7
ПОДРОБНОЕ ОПИСАНИЕ	8
Salon	8
Dinnette Features	8
Galley	8
Master Stateroom	8
Master Head	9
VIP Stateroom	9
VIP Guest Head	9
Guest Stateroom	9
Electronics	9
Aft Deck/ Sport Deck	10
Flybridge and Bridge Deck	10
Electrical / Mechanical Equipment	10
Outside Equipment/Extras	11
Performance Notes	11
Engine Room	11
Options	11
Исключения	12
Отказ от ответственности	12

ФОТОГРАФИИ	13
Profile	13
Profile	13
Profile	13
Profile	13
Profile	13
Profile	13
Profile	14
Saloon	14
Saloon	14
Saloon	14
Dinette	14
Galley seating	14
Saloon	15
Saloon	15
Saloon	15
Galley	15
Galley	15
Galley	15
Galley	16
Galley	16
Galley	16
Galley	16
Saloon	16
Saloon	17
Saloon	17
Saloon	17
Stairs to staterooms	17

Stateroom	17
Stateroom	17
Stateroom	18
Stateroom	18
Stateroom	18
Head	18
Head	18
Head	18
Stateroom	19
Stateroom	19
Twin cabin	19
Twin cabin	19
Head	19
Head	19
Head	20
Flybridge	20
Flybridge	20
Helm station	20
Helm station	20
Helm station	20
Helm station	21
Helm station	21
Helm station	21
Helm station	21
Helm station	21
Helm station	21
Helm station	21
Helm station	21
Helm station	22
Stairs to stern	22
Stern	22

Stern	22
Stern seating	22
Engine room	22
Engine room	23
Engine room	23
Engine room	23
Engine room	23
Engine room	23
КОНТАКТЫ	24
Контактная информация	24
Телефоны	24
Время работы	24
Адрес	24

ХАРАКТЕРИСТИКИ

Обзор

60' Hatteras Motoryacht 2014

Open trade-ins. Financing is available. Motivated Seller, this needs to be the next Hatteras sold!

Boat was recently gone through to prepare for sale. Items include: - Prop balance - New radar - All services (engines + generators) - Detailed interior - Revised mechanics & systems - Fire inspection - New exterior upholstery (Silvertech)

Основная информация

Тип судна: Моторная яхта

Подкатегория: Flybridge

Модельный год: 2014

Год постройки: 2014

Страна: United States

Верх: Hardtop

Открытая палуба мостика: Да

Размеры

Длина общая: 60' 0" (18.29m)

Ширина: 18' 2" (5.54m)

Макс. осадка: 4' 6" (1.37m)

Скорость, вместимость и масса

Крейс. скорость: 26 Kts. (30 MPH)

Макс. скорость: 32 Kts. (37 MPH)

Водоизмещение: 87700 Pounds

Вместимость воды: 250 Gallons

Вместимость сточного бака: 100 Gallons **Объем топливного бака:** 1000 Gallons

Размещение

Всего кают: 3

Всего коек: 6

Спальные места: 6

Всего ком. состава: 2

Корпус и палуба

Материал корпуса: Fiberglass

Комплектация корпуса: Deep Vee

Информация о двигателе

Двигатели: 2

Производитель: Caterpillar

Модель: C-18

Тип двигателя: Inboard

Тип топлива: Diesel

ПОДРОБНОЕ ОПИСАНИЕ

Salon

- UPGRADED- Custom leather sofa L-shaped with storage
- Bose Lifestyle 35 home theater with CD/DVD and surround speakers
- LED lighting throughout
- All windows have blinds
- Padded panel headliner
- 36" LCD flat screen TV
- UPGRADED Amitco Vinyl flooring

Dinette Features

- Custom marble dinette with L-shaped leather seating and storage underneath
- All LED lighting with steps to tower companionway
- Dinette L-shape with storage

Galley

- UPGRADE - Open galley with custom marble, island, and stainless steel sink
- UPGRADE- Stainless wine cooler
- UPGRADE- Dish washer
- Microwave/convection oven
- UPGRADE (4) sub zero refrigerator/freezers
- 4-burner ceramic cook top
- Pantograph door starboard side
- Amtico strip flooring

Master Stateroom

- Custom upholstered headboard
- UPGRADE- Full beam master suite with opening port lights on both sides
- King size berth with upgraded mattress
- Nightstands with drawers
- Vanity and stool
- Twin cedar-lined wardrobes upgraded
- TV and Bose surround sound system
- Dresser with drawers both port and starboard
- Twin cedar-lined wardrobes

- Mirrors

Master Head

- Private ensuite head with Amitco strip floors
- Mirrored ceiling
- Upgraded marble counter tops
- UPGRADE Dual vessel sink and vanity cabinet
- Large separate shower with seat
- UPGRADE out of the wall faucets

VIP Stateroom

- Queen size berth with upholstered headboard
- Cedar-lined storage underneath
- Cedar-lined hanging locker
- Night stands port and starboard
- 19" LCD TV with DVD stereo
- All LED lighting
- Private access to head

VIP Guest Head

- Access from both the VIP Stateroom and the companionway
- Amtico strip flooring
- LED lighting
- Upgraded marble counter tops
- Stall shower with door
- Base cabinet with storage
- Upgraded wall covering

Guest Stateroom

- Top & Bottom Bunk Bed
- 19" LCD TV with DVD stereo
- Cedar lined closet space
- All LED Lighting

Electronics

- (2) 15' Garmin 3D with plotter
- Furuno sounder
- Garmin Gst, 6 kw HD radar open array
- SAT TV KVH
- Simrad auto pilot
- Icom VHF
- (2) cameras on both port and starboard sides and (1) camera in the engine room
- Eprib Globafix IPro

- Clarion CD player
- JL Cockpit speakers
- Compass
- Furuno Depthsounder
- Log-speedometer
- Navigation center
- Repeater(s)

Aft Deck/ Sport Deck

- Transom door
- Port and starboard gates
- UPGRADE - (2) retractable shore cord
- Hatch to bridge
- UPGRADE - (5) blue under water lights
- Molded fiberglass stairway to flybridge

Flybridge and Bridge Deck

- UPGRADE - 1000 lb hydraulic davit
- UPGRADE- BBQ grill
- UPGRADE - Refrigerator
- UPGRADE - Icemaker
- UPGRADE - Custom Release helm chairs
- UPGRADE - Lounge seating with custom Release Marine table
- UPGRADE - Recessed Tri-color LED lighting
- UPGRADE - enclosure
- Tri-color LED lights for hard top

Electrical / Mechanical Equipment

- 20 gallon hot water heater

- 240v automatic battery charger
- Automatic battery paralleling system
- Sidepower Bow thruster
- Oil changing system
- Engine gears
- Generator exhaust/water separator
- UPGRADE - (2) 21.5 kw Onan fresh water-cooled electronic quiet diesel generators
- Fiberglass air intake system for engine room
- FM 200 fixed fire extinguishing system for engine compartment
- 40 gallon and hour water maker
- 8.0 Inverter with battery bank for operation of water pump, all gallery refrigeration, and salon entertainment equipment
- Shore power inlet

Outside Equipment/Extras

- Cockpit shower
- Cockpit cushions NEW Silvertex
- Cockpit table
- Swimming ladder

Performance Notes

- Cruise Low- 20 knots
- Cruise Long Range- 9.2 knots/ 1090 miles
- Cruise High- 26+ knots
- Max Speed- 30+ knots

Engine Room

- Entrance through both the aft deck hatch or the optional bustle door from the transom
- Spacious with 6'11" head room
- Unhindered access to the upgraded twin CAT C-18 engine with 1150hp each

Options

- 2nd 21.5 kw Onan generator
- Polished plow anchor
- (2) Release tables on Cockpit and Bridge - custom blue LED lights all along the edge
- Exterior Forward Entry Door Selection

- Engine Selection (CAT C-18 1135 BHP)
- Wood and Finish Selection (African Mahogany Satin - Horizontal Grain and Dark Molding)
- Bow Thruster
- Additional Generator Selection (Generator, Single 21kw, Standard)
- Aft Deck Bustle Gates
- Aft Deck Boarding Ladder, Tide Ride Sea Stairs with Storage Bracket
- Flybridge Refrigerator/Icemaker Combo Unit
- Bow Deck Freshwater Wash Down, Additional Outlet
- Galley Wine Cooler
- Bow Stateroom TV, 19" LCD with DVD Stereo in lieu of AM/FM/CD Stereo
- Galley Oven
- Galley Dishwasher Selection
- Galley Icemaker
- Oil Changing System Engines/Gear/Generator
- Generator Exhaust/Water Separator
- Companionway Washer/Dryer
- Bow Deck Cushions to Convert Forward Seat to Sunpad
- Aft Deck Retractable Shorecords (2) in Lieu of Fixed Inlets
- Flybridge Grill with Cabinet
- Aft Deck Hatch to Flybridge
- Aft Deck Hand-Held Shower
- Master Stateroom HMC System 3 King Mattress
- Master Head Plexi Mirrored Ceiling
- Watermaker Selection (8.0 Watermaker, 800 GPD, Sea Recover)
- Flybridge Air Conditioning

Исключения

При продаже яхты исключаются личные вещи владельца.

Отказ от ответственности

Компания предоставляет описание судна или яхты добросовестно, но не может гарантировать точность этой информации, а также не ручается за техническое состояние. Покупатель должен проинструктировать своих агентов или оценщиков исследовать представленную информацию более подробно, по собственному желанию. Продажа судна или яхты, изменение цены или снятие с продажи будет происходить без предварительного уведомления.

ФОТОГРАФИИ

Profile



Profile



Profile



Profile



Profile



Profile



Profile



Saloon



Saloon



Saloon



Dinette



Galley seating



Saloon



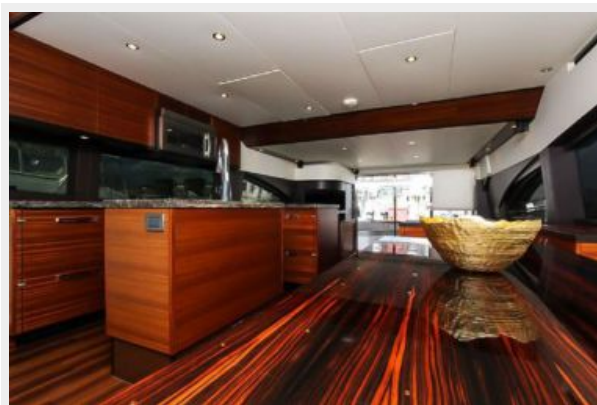
Saloon



Saloon



Galley



Galley



Galley



Galley



Galley



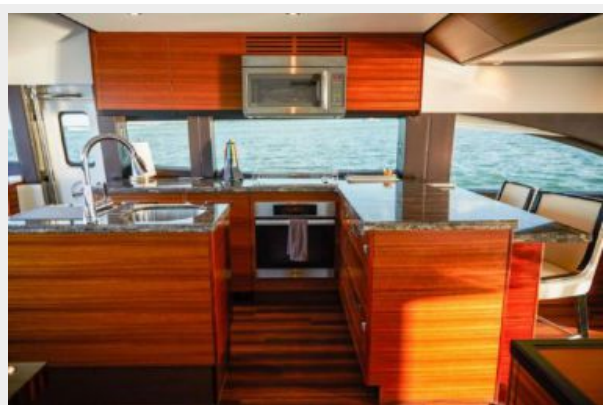
Galley



Galley



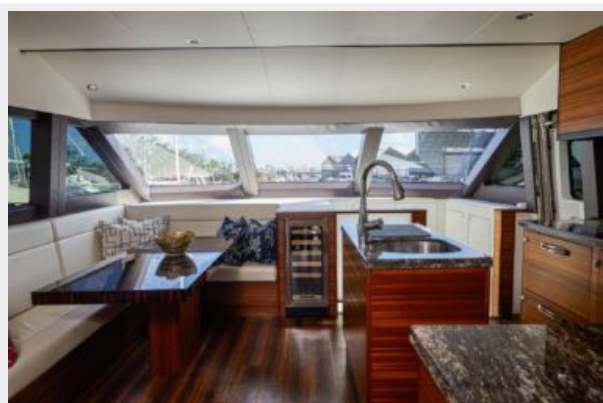
Galley



Saloon



Saloon



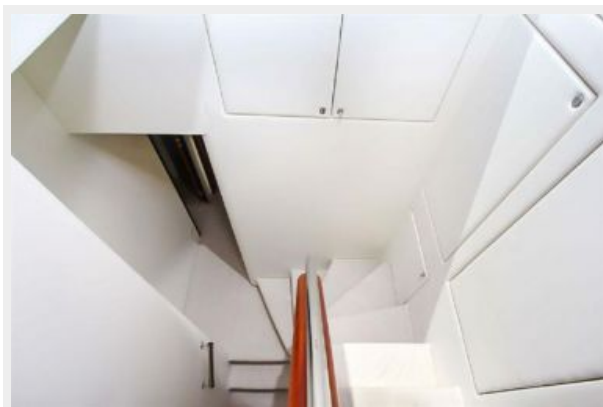
Saloon



Saloon



Stairs to staterooms



Stateroom



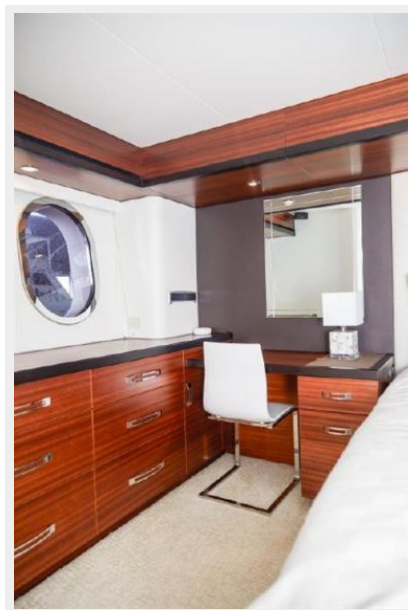
Stateroom



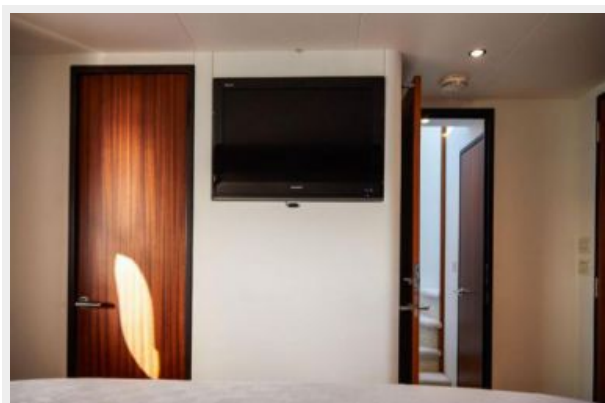
Stateroom



Stateroom



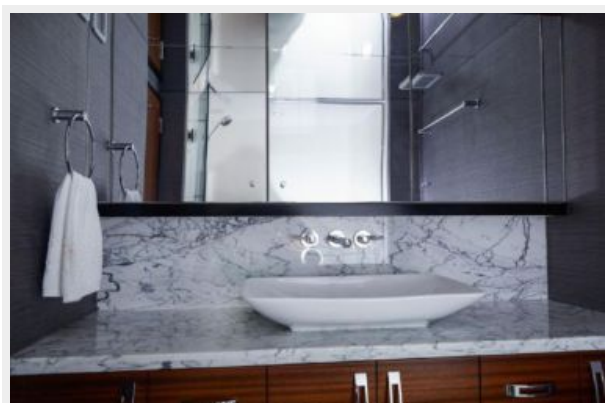
Stateroom



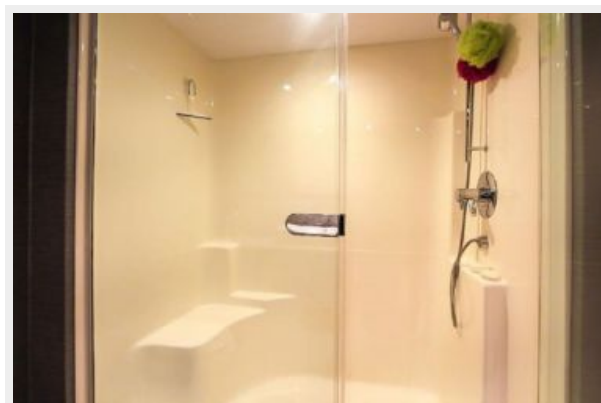
Head



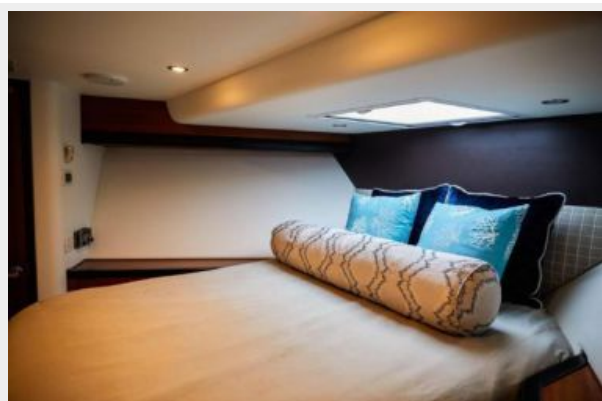
Head



Head



Stateroom



Stateroom



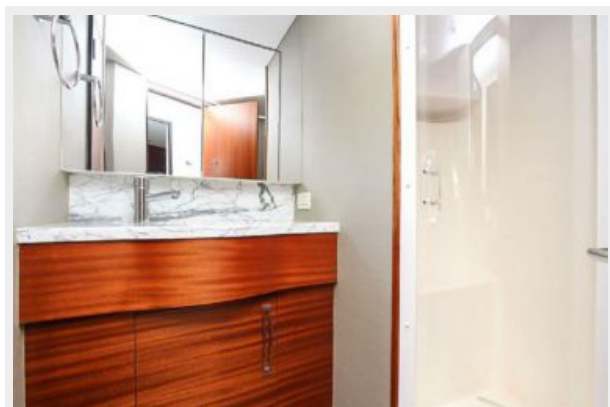
Twin cabin



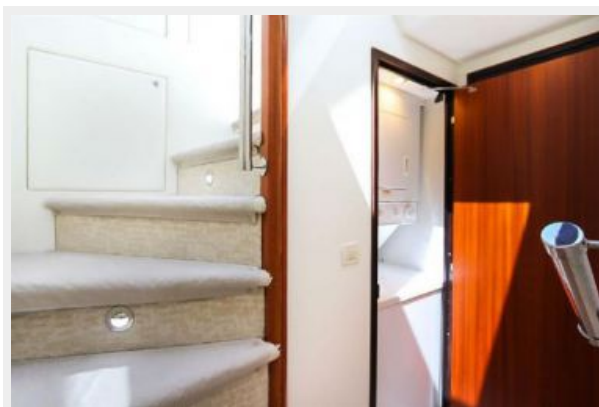
Twin cabin



Head



Head



Head



Flybridge



Flybridge



Helm station



Helm station



Helm station



Helm station



Helm station



Helm station



Helm station



Helm station



Helm station



Helm station**Stairs to stern****Stern****Stern****Stern seating****Engine room**

Engine room



Engine room



Engine room



Engine room



КОНТАКТЫ

Андрей Шестаков (Andrey Shestakov) – ведущий яхтенный брокер отдела продаж яхт и судов компании Shestakov Yacht Sales Inc. Официальный представитель Shestakov Yacht Sales Inc. для русскоговорящих клиентов в центральном офисе компании в Майами/Форт Лодердейл/Флорида/США.

Контактная информация

Email: andrey@shestakovyachtsales.com

Web: shestakovyachtsales.com

Телефоны

Краснодарский край: **+7(918)465-66-44**

США, Майами, Флорида: **+1(954)274-4435**

Время работы

Понедельник – Суббота: **9:00 - 21:00**
EDT

Воскресенье: **Закрито**

Адрес



Harbour Towne Marina, 850 NE 3rd St,
STE 213, Dania, FL 33004