

## RAVENOUS II — OYSTER MARINE LTD



**Судостроитель:** OYSTER MARINE LTD

**Год постройки:** 2007

**Модель:** Крейсерская яхта

**Цена:** **ЦЕНА ЯХТЫ ПО ЗАПРОСУ**

**Местонахождение:** United States

**Длина общая:** 82' 0" (24.99m)

**Ширина:** 20' 9" (6.32m)

**Мин. осадка:** 8' 4" (2.54m)

**Макс. осадка:** 8' 5" (2.57m)

Купить **RAVENOUS II — OYSTER MARINE LTD** а также выбрать подходящую вам яхту из нашего каталога яхт вам поможет опытный яхтенный брокер Андрей Шестаков. На сегодняшний день компания **Shestakov Yacht Sales Inc.** имеет большое количество яхт в собственном списке продаж, а также тесно сотрудничает со всеми крупными яхтенными производителями по всему миру.

Для того чтобы купить яхту **RAVENOUS II — OYSTER MARINE LTD** а также проконсультироваться по любому вопросу связанному с покупкой, продажей, чартером яхт позвоните по телефону **+7(918)465-66-44**.

# ОГЛАВЛЕНИЕ

ОГЛАВЛЕНИЕ	2
ХАРАКТЕРИСТИКИ	4
Обзор	4
Основная информация	4
Размеры	5
Скорость, вместимость и масса	5
Размещение	5
Корпус и палуба	5
Информация о двигателе	6
ПОДРОБНОЕ ОПИСАНИЕ	7
INTRODUCTION	7
INTERIOR LAYOUT	7
ELECTRICAL SYSYEM	10
NAVIGATION AND COMMUICATION EQUIPMENT	11
ENTERTAINMENT ELECTRONICS	11
MECHANICAL	12
CONSTRUCTION	13
RIG and SAIL HANDLING	14
DECK LAYOUT and EQUIPMENT	15
TANKAGE and PLUMBING	16
SAFETY	17
GENERAL	18
2017 MATERIAL IMPROVEMENTS	18
OWNER'S COMMENTS	20
BROKER'S COMMENTS	21
EXCLUSIONS	21
Исключения	21
Отказ от ответственности	21

---

ФОТОГРАФИИ	22
КОНТАКТЫ	26
Контактная информация	26
Телефоны	26
Время работы	26
Адрес	26

# ХАРАКТЕРИСТИКИ

## Обзор

RAVENOUS II, an exquisite blend of form meets function, was built by a seasoned yachtsman as his second Oyster. His objective was to create a vessel that was safe and comfortable for his large sailing family, with a shallow draft to allow for exploring the Chesapeake Bay and islands, while still presenting as a worthy competitor in Oyster Regattas. No expense was spared in the build, and all objectives were exceeded with flying colors.

Seamlessly incorporating both classic and contemporary, RAVENOUS II is an iconic presence on both the U.S. eastern seaboard and Caribbean circuit. She sports a Flag Blue hull and a white carbon mast with V-boom, a head-turner in any port. Her African-inspired interior features maple joinery with rich mahogany accents, beautiful teak soleboards and plush upholstery, all of which combine to accentuate the light, airy interior. Her upper salon and nav area offer expansive views via the deck saloon windows. The equally inviting lower saloon serves as a breakfast nook, reading and lounge area. Her three generous en-suite guest cabins, equipped with hideaway pipe berths for additional accommodations, offer comfort, storage and entertainment for owner and guests. Generous crew quarters and galley forward naturally provide privacy and separation while ensuring the boat is configured for silver service.

The versatile deck layout allows for multiple functions, from a competitively-crewed race program to a shorthanded passage. Her spacious cockpit is outfitted to host a multitude of guests for après-sail cocktails to spontaneous alfresco dining on a moonlit evening. Her carefully-chosen top-of-the-line deck hardware perfectly delivers performance when the owner wants. Crewed and maintained by a knowledgeable captain, and refit to the highest standards, RAVENOUS II will not last long in today's market.

US Duty paid.

## Основная информация

**Тип судна:** Крейсерская яхта

**Подкатегория:** Cruising/Racing Sailboat

**Модельный год:** 2007

**Год постройки:** 2007

**Страна:** United States

## Размеры

---

**Длина общая:** 82' 0" (24.99m)

**Длина по ватерлинии:** 70' 6" (21.49m)

**Ширина:** 20' 9" (6.32m)

**Мин. осадка:** 8' 4" (2.54m)

**Макс. осадка:** 8' 5" (2.57m)

## Скорость, вместимость и масса

---

**Водоизмещение:** 132277 Pounds

**Вместимость воды:** 339 Gallons

**Объем топливного бака:** 1136 Gallons

## Размещение

---

**Всего кают:** 5

**Всего коек:** 9

**Спальные места:** 13

**Всего ком. состава:** 5

**Каюты экипажа:** 1

**Койки экипажа:** 2

**Спальных мест экипажа:** 2

**Комм. состав экипажа:** 1

## Корпус и палуба

---

**Материал корпуса:** Fiberglass

**Материал палубы:** Teak

**Комплектация корпуса:** Monohull

**Цвет корпуса:** Flag Blue

**Отделка корпуса:** Fiberglass

**Дизайнер корпуса:** Humphreys/Oyster

## Информация о двигателе

---

**Двигатели:** 1

**Производитель:** Caterpillar

**Модель:** 3126

**Тип двигателя:** Inboard

**Тип топлива:** Diesel

---

# ПОДРОБНОЕ ОПИСАНИЕ

---

## INTRODUCTION

---

RAVENOUS II, an exquisite blend of form meets function, was built by a seasoned yachtsman as his second Oyster. His objective was to create a vessel that was safe and comfortable for his large sailing family, with a shallow draft to allow for exploring the Chesapeake Bay and islands, while still presenting as a worthy competitor in Oyster Regattas. No expense was spared in the build, and all objectives were exceeded with flying colors.

Seamlessly incorporating both classic and contemporary, RAVENOUS II is an iconic presence on both the U.S. eastern seaboard and Caribbean circuit. She sports a Flag Blue hull and a white carbon mast with V-boom, a head-turner in any port. Her African-inspired interior features maple joinery with rich mahogany accents, beautiful teak soleboards and plush upholstery, all of which combine to accentuate the light, airy interior. Her upper salon and nav area offer expansive views via the deck saloon windows. The equally inviting lower saloon serves as a breakfast nook, reading and lounge area. Her three generous en-suite guest cabins, equipped with hideaway pipe berths for additional accommodations, offer comfort, storage and entertainment for owner and guests. Generous crew quarters and galley forward naturally provide privacy and separation while ensuring the boat is configured for silver service.

The versatile deck layout allows for multiple functions, from a competitively-crewed race program to a shorthanded passage. Her spacious cockpit is outfitted to host a multitude of guests for après-sail cocktails to spontaneous alfresco dining on a moonlit evening. Her carefully-chosen top-of-the-line deck hardware perfectly delivers performance when the owner wants. Crewed and maintained by a knowledgeable captain, and refit to the highest standards, RAVENOUS II will not last long in today's market.

US Duty paid.

## INTERIOR LAYOUT

---

### GENERAL

Thirteen berths in five cabins, excluding the saloon - ten fixed berths with additional two stowing pipe berths with 2" mattresses, and one Pullman. Interior joinery finished in maple with inlaid mahogany accents. Designed to be modern and coordinated, whilst remaining practical and durable at sea. Essential features include sculpted fiddles and grabrails, 'shadow-gap' joints between panels and Oyster custom knobs for lockers and drawers.

- Cabin sole in teak 'planked effect'
- Surfaces in galley in Avonite - color: 'Copper Canyon'
- Surfaces in galley and heads in Avonite - color: 'Cordoba'

- Headlining in cream 'Mariner Ivory' vinyl
- Upholstery – leather - color: 'Magnolia'
- Crew covers for saloon seating areas
- Lee cloths to all sea berths
- Carpets for all soleboards aft
- Oceanair skyscreens to all deck hatches, except sail locker storage
- Flyscreens to all opening ports
- Hella fans throughout

## FORWARD SAIL LOCKER

- Accessed via crew quarters via deck hatch
- Locker storage

## CREW'S QUARTERS

- To port, with upper and lower berths
- Hanging locker, cabinet and bookshelves
- Overhead hatch for light and ventilation
- Bosch washer and dryer

## EN-SUITE CREW HEADS

- To starboard, with electric Quiet Flush toilet (salt or fresh water), washbasin and shower stall
- Hatch for light and ventilation

## CAPTAIN'S CABIN

- To starboard with double berth
- Hanging locker, drawers, shelving and cubbies
- Hatch for light and ventilation

## GALLEY

To port. Generous worktop space and abundant lockers for stowage. Slide-out baskets with sea lock, spice rack and knife rail. Slide-away smoked Perspex pocket door can be used to isolate galley from lower saloon.

- Gimballed Force 10 gas cooker in stainless steel with four burners, grill and oven with stainless steel cooker hood
- General Electric Advantium 120 microwave/convection oven in stainless steel
- Front-opening custom Frigoboat unit in stainless steel with twin evaporator plate systems
- Insulated freezer box, with additional freezer box built into the galley
- Wine cooler with 28-bottle capacity
- Fisher and Paykel 2-door dishwasher
- Twin stainless steel sinks with macerator pump



- Dedicated faucet for drinking water with charcoal filter
- Hatch for light and ventilation

## LOWER SALOON

To starboard with L-shaped settee and coffee table of custom Birdseye Maple, with padded cover. Bar area aft with stowage for glasses and bottles. Glass locker and bookcase.

## NAVIGATION AREA

In upper level to starboard with large, forward-facing chart table and swivel seat, customized around the navigational equipment. One PC with option for another. Abundant storage.

## UPPER SALOON

Light, spacious and located to port, this upper saloon features a 4-sided wraparound settee surrounding a rectangular, expandable table of Birdseye Maple with padded cover on a large pedestal base. Hatches for light and ventilation.

## ENGINE ROOM

With sound insulation, accessed from aft passageway, with 220V and 24V lighting and (2) ACI VB16 extractor fans. Jabsco 100mm heavy-duty air intake.

## STARBOARD AFT GUEST CABIN

Twin berths with a Pullman convertible berth inboard and hideaway pipe berth with 2" mattress, outboard. Hanging locker, drawer storage and carpeted sole.

## EN-SUITE HEADS

With Vacuflush toilet, washbasin and separate shower stall.

## PORT AFT CABIN

Twin berths with a Pullman berth inboard and hideaway pipe berth with 2" mattress, outboard. Hanging locker, drawer storage and carpeted sole.

## OWNER'S STATEROOM

With a double berth offset from centerline, settee, dressing table, a large hanging locker and abundant drawer and locker space. Stainless steel steps with wooden treads to starboard lead up to a private companionway, giving access to the aft deck via a sliding hatch. Desk/vanity with USB ports and carpeted sole.

## EN-SUITE HEAD / SHOWER

To starboard with Vacuflush toilet, washbasin and separate shower stall.

---

## ELECTRICAL SYSTEM

---

### SHIP'S SUPPLY

- 24V

### RINGMAIN

- 220v / 110V AC ring main with (3) pin US-style outlet sockets located as appropriate within the layout

### OTHER ELECTRICAL SOCKETS

- 12V Cigarette lighter sockets at chart table and aft cabin
- Water resistant socket in lazarette
- 12V waterproof socket at pedestal
- 24V socket in anchor locker for anchor light

### BATTERY MANAGEMENT

- (3) Mastervolt MASS 24V/100Amp battery charger
- Emergency link system between domestic and engine start 24V batteries
- Emergency parallel link to start and domestic batteries

### INVERTER

- (2) Mastervolt MASS 24/2500W sine wave inverters with second inverter for icemaker and drinks fridge
- Mastervolt 12/500W inverter for PCs

### SHORE POWER

- (2) 50A Core shore power cables
- Shore power inlet

### INTERIOR LIGHTING

- Dimmers to upper and lower saloon lighting, master cabin and cockpit
- Overhead lighting in all cabins
- 24V socket in anchor locker for anchor light
- Red floor-level nightlights in saloon, passage and galley
- Red LED overhead lights in galley and at chart table
- Red courtesy lights in step risers
- Savage Marine fiber optic lighting in companionway steps and steps leading to cabins aft
- LED step lights under all watertight doors
- Automatic door light in all hanging lockers

### EXTERIOR LIGHTING

---

- (2) Lights to lazarette
- (10) LEDs fit down low in cockpit
- (12) LEDs set into the bullwark for mood lighting
- Underwater lights at transom

---

## NAVIGATION AND COMMUNICATION EQUIPMENT

---

### COMPASSES

- Steering compasses flush-mounted on each steering pedestal

### SAILING INSTRUMENTS

- Raymarine instrumentation (new winter 2016)
- (2) i70 Raymarine multi-function displays at port helm
- (4) i70 Raymarine multi-function displays at companionway
- (2) i70 Raymarine multi-function displays and (1) ES 127 Raymarine touch screen chartplotter at starboard helm
- (1) ES 127 Raymarine touch screen chart plotter and (1) i70 Raymarine multi function display at chart table
- (1) i70 Raymarine multi-function display in captain's cabin
- Airmar ST800 smart transducers for speed and depth, including Airmar DST800 bronze retractable thru-hull
- VHF
- Wind speed and direction

### RADAR

- Mast-mounted Raymarine RD424HD 24" radar dome

### GPS

- RS 130 SeaTalk GPS on aft railing
- SEAME radar detector
- Repeaters

### AUTOPILOT

- Raymarine EV-400 sail pilot package (new winter 2016)

---

## ENTERTAINMENT ELECTRONICS

---

### LOWER SALOON

- 40" Samsung Curve Smart TV

## OWNER'S CABIN

- 20" TV
- Alpine head unit plays DVD/CD, and iPod connectors
- RCA input for TV and head unit

## GUEST CABINS (2)

- 20" TV's
- Alpine head unit plays DVD/CD, and iPod connectors
- RCA input for TV and head unit

## CREW CABIN

- 15" TV with Alpine head unit for DVD/CD, and iPod connectors
- RCA input for TV and head unit

## CAPTAIN CABIN

- 20" TV with Alpine head unit for DVD/CD, and iPod connectors
- RCA input for TV and head unit

## COCKPIT

- Pair of waterproof speakers with fader control in the cockpit

---

# MECHANICAL

---

## ENGINE

- Caterpillar 3126, 300 hp
- Engine fully serviced (2015)
- Hours\*: approximately 3,280 (March, 2018)
- Four-blade Maxprop

*\*Engine hour meter was changed at 3,500, total hours reported approximately 6,780*

## GENERATORS

- Twin Onan MDKAF 27kW/220V/60Hz diesel generators (new 2014) with sound shields
- Generator start/stop at port pedestal

## PORT GENERATOR

- Hours: Approximately 1,591 (March 2018)

## STARBOARD GENERATOR HOURS

- Hours: Approximately 2,992 (March 2018)

## BOWTHRUSTER

- Lewmar retractable hydraulic bow thruster

## STEERING SYSTEM

- Whitlock Mamba rod and gearbox system

## HYDRAULICS

- Lewmar Commander 400 power pack for headsail furling, staysail furling and windlass

## CLIMATE CONTROL

- Reverse-cycle air conditioning throughout

## ICEMAKER

- U-Line 110V icemaker

## WATERMAKER

- Seafresh H2016 AC watermaker - approx 276 liters (73 US gallons) per hour
- Watermaker membranes (new 2013)

---

# CONSTRUCTION

---

## HULL NUMBER

- 82/08

## HULL CONSTRUCTION

- Laid-up GRP, single skin with structural stringers and floors to Lloyds approved design

## HULL FINISH

- Awlgrip Flag Blue hull with silver cove line

## DECK CONSTRUCTION

- Molded in GRP with balsa core for strength and insulation, featuring Oyster's renowned Deck Saloon profile with eyebrow detail

## DECK FINISH

- Teak-laid decks, gloss-varnished teak caprail with stainless steel fairleads
- Decks sanded and caulked 2013, and caprail re-varnished 2015

## KEEL

- Shoal draft high performance bulb (HPB) keel – lead casting bolted to GRP keel stub

## RUDDER

- Fully protected skeg-hung rudder

## STERN DESIGN

- ‘Sugar scoop’ stern design with bathing platform and steps for access to the stern deck or counter stern

## EURCD

- Built to comply with the requirements for Category ‘A’ – Ocean

# RIG and SAIL HANDLING

---

## MAST and RIGGING

- Cutter rig. Hall Spars Carbon mast. Rig out and inspected (2013)
- Running rigging replaced: Jib halyard, mainsheet, backstays and main halyard preventer (2015)
- Hydraulic backstay with manual crank and release
- Mast steps
- Spinnaker pole

## SAILS

- Fully battened with Park Avenue V-boom
- Quantum - Fully-battened mainsail (new 2011)
- Quantum - Furling genoa (new 2011)
- North Sails - Furling staysail
- Quantum spinnaker (new August 2015 - unused)
- Foresail furling - Reckmann (factory serviced 2013)
- Staysail furling - Reckmann (factory serviced 2013)

## WINCHES

- Lewmar winches – all self-tailing:
- (2) 88/3 SEST electric primaries
- (2) 77/2 SEST electric secondaries
- (1) 66 SEST electric mainsheet

- (1) 66 SEST electric main halyard
- (1) SEST electric halyard
- Jammers and rope clutches on mast

## DECK LAYOUT and EQUIPMENT

---

### ANCHOR

- CQR 66kg (140 lb.) stainless steel anchor with 100m (328') of 14mm (1/2") chain of stainless steel
- Bruce kedge anchor

### WINDLASS

- Lewmar 4000 hydraulic windlass with foot switches and control at pedestal

### DECK ACCESS

- Midship gateway stanchions with stainless steel hinged boarding ladders which close up to form the side gates
- Gate to pushpit
- Stainless steel swim ladder
- Electric passerelle

### HATCHES

- Oyster custom drop-down washboard system for main companionway
- Lewmar alloy-framed deck hatches
- Gebo alloy-framed coaming portlights
- Lewmar opening hullports
- Rondal deck prisms

### CANVAS

- Fold-down companionway sprayhood in Sunbrella color 'Oyster' with leather-covered stainless steel grabrail to aft end
- Bimini
- Mainsail cover
- Cockpit cushions

### DECK PLUMBING

- Hot and cold freshwater deck shower in transom locker
- Freshwater washdown outlet at bow with anchor outlet near cockpit
- Freshwater outlet on deck at the bow, including hose, for salt water washdown

## COCKPIT

- Walk-through teak-laid cockpit
- Stainless steel drink holders on pedestals and at companionway
- Varnished cockpit table with stainless steel frame, folding leaves and refrigerated GRP-insulated box

## STEERING

- Whitlock Mamba rod and gearbox system, installed with twin remote pedestals, each incorporating stainless wheels and leather covers

## GENERAL

- Stainless steel pulpit and pushpit
- Stainless steel fairleads, stainless steel/ alloy mooring and cockpit cleats
- Stainless steel dorade vents
- Lazarette locker with twin stainless steel gas struts
- Life raft storage built into pushpit for life raft stowage to port and starboard
- Stern quarter pushpit seats in teak and stainless steel
- Antenna pole at stern for navigation/communications
- Gas locker for (2) bottles

## TANKAGE and PLUMBING

---

FUEL 4,300 liters (1,136 US gallons) in (3) GRP tanks:

- Port forward: 1,650 liters approximately (436 US gallons)
- Starboard forward: 1,650 liters approximately (436 US gallons)
- Starboard aft: 1,000 liters (264 US gallons)

## WATER

- (1) GRP tank, port aft, 1,000 liters (264 US gallons)
- (1) Reserve plastic water tank approx. 200 liters (53 US gallons)

## HOT WATER

- From (2) insulated 93-liter tanks (approx. 24 US gallons) heated by 220V, 2kW immersion heater element

## PRESSURIZED HOT AND COLD FRESHWATER SYSTEM

## HOLDING TANKS

- (4) Gravity discharge holding tanks: (1) forward and (3) aft – each fitted with electric tank



gauges

## GREY WATER

- (4) Plastic 8-liter Whale grey water tanks fitted with float switch and Whale gulper pump
- (1) Plastic 8-liter Whale grey water tank fitted with float switch for washing machine
- (1) Larger plastic gray water tank for dishwasher

## MANIFOLD SYSTEM

- Bronze manifold for seawater inlets

# SAFETY

---

## LIFE RAFT

- (2) 6-man Lifeguard Forties life rafts with hydrostatic releases (serviced March 2016)

## EPIRB

- GME MT403FG float free 406MHz EPIRB with hydrostatic release, mounted on the aft deck
- ACR PLB-200 EPIRB

## RADAR REFLECTOR

- Echomax 230 radar reflector on mast

## BILGE PUMPS

- (1) Hand Whale pump
- (1) Jabsco 24V electric pump
- (1) Pump running off main engine

## DECK SAFETY

- Mast-mounted horn
- Lifesling
- (1) Solas B grab bag
- Emergency tiller steering
- Jonbuoy recovery module

## FIRE EXTINGUISHERS

- (7) Dry powder fire extinguishers (serviced March 2018)
- Sea-fire engine room automatic fire extinguisher (serviced March 2018)

## ALARMS

- Bilge alarm system with alarm at chart table and warning lights in engine room

## GENERAL

---

### RIB/DINGHY

- Novurania 430DL RIB tender with 4-stroke Yamaha 60hp motor (new 2013)

### WARPS AND FENDERS

- (4) Tube solid fenders
- (5) Inflatable tube fenders
- Mooring lines

### DIVE TANKS

- (2) Dive tanks

### SAFES

- 4-brick safe in aft cabin
- Safe in captain's cabin (Size: 4" x 8")

## 2017 MATERIAL IMPROVEMENTS

---

- New air-conditioning units, ducting and controls
- Refurbished dishwashing machines
- Refurbished water maker, including plumbing
- Re-plumbed parts of water system
- Resealed backstay hydraulics
- Repainted engine
- Full annual inspection for both generators, and engine
- Replaced water pressure pump switch on both generators, replaced the water pump impellers on all engines
- Replaced thermostats on gen sets and engine
- Cleaned fuel system, including Racors
- New zincs
- Pressure tested all oil coolers, heat exchangers inspected for tolerances and timing
- New 110 volt engine room lights
- New padding in engine compartment
- Refurbished portion of leather interior cushions in saloon
- Vacu-washed sails
- Replaced chaffed reef line #3 inboard

- Rebuilt entire inboard batten system on main sail
- Performed rig inspection; Hall Spars produced rig report
- New freshwater pump and accumulators
- New deck wash pump
- New galley sink drain plumbing
- Serviced galley refrigeration, deck fridges and bar freezer
- New freezer compressors, plumbing and plates
- New exterior deck cushions
- Reconditioned navigation lights
- Rebuilt hydraulic main sail
- Reconditioned bottom by sanding and applied bottom paint
- Removed shaft for reconditioning, polished prop, inspected shaft alignment
- New cutlass shaft bearing
- Painted aqua drive
- Rewired bow thruster control switches
- Full service of tender
- New tool storage in engine room
- Varnished outside tables and cap rail
- Varnished companionway and forward floorboards
- New oil gasket on main engine

#### Winter 2016 / 2017

- Port "house sea water manifold" removed, cleaned, all bronze fittings and ball valves replaced and re-installed
- Intake raw water hose for freezer pump replaced
- Intake raw water hose for crew head (salt water flush) replaced
- Intake raw water hose from manifold to low pressure water maker pump replaced
- Breather hose for raw water manifold replaced
- Starboard engine raw water manifold cleaned and ball valves serviced
- Deep clean of engine room bilges
- All Racor filters replaced and bowls removed, cleaned and re-installed
- (3) Aft cabin black tank discharge
- Thru-hulls replaced
- All other thru-hulls serviced
- All universal joints in rod steering system inspected and greased
- All winch motor mountings inspected and tightened as necessary
- Main engine cleaned and painted
- Navigation equipment replaced, including all new cables run throughout boat and rig
- Main bilge pump removed, housing cleaned, impeller replaced, mounting plate painted and re-installed
- Hose from bilge to bilge pump replaced

#### REFIT 2013 - 2015

- Fully re-seamed decks (with deeper cut seams)
- Un-stepped rig
- Rig inspected
- Furler service at Reckmann in Germany
- Stripping and barrier coated bottom
- Engine aligned
- Cutlass bearing replaced
- Rudder inspected (seals and bearings)
- Running rigging upgraded
- Replaced (2) gensets
- New prop

## OWNER'S COMMENTS

---

Creating RAVENOUS II was both a joy and the result of a lot of experience. She was to be our third large fast cruising boat. Having just owned and sailed an Oyster 70 for seven years we knew what we wanted.

I was completely satisfied with the basic design of the Oyster 82 as a sailing machine and we were going to make it better. It was meant to be a boat that would allow us to cruise with friends and our very large family. Twin beds and extra berths in each guest cabin was a must. Hot water and air conditioning systems that exceeded any normal specs. We chose the carbon fiber boom and mast because it was both the best sailing option and its lightness would compensate for the shoal draft at 8.5 feet. Growing up in New England and living in the Chesapeake area having a shallow draft was a necessity without compromising the boats sailing ability. We have won more than our share of races and have been named the winner of the Concourse de Excellence on many occasions.

Since the boat was based in Annapolis and spent every winter in the Caribbean we build the boat with a fuel capacity to motor the whole way from Annapolis to Antigua if necessary. With the right winds we use hardly any substantial fuel at all.

The inside of the boat is the inspired work of my wife. We had to travel to South Africa while we were building RAVENOUS II and she took inspiration on wood treatments from the Mandela suite at the Saxon Hotel just outside J-town. The use of mahogany inset in every drawer or door that opened was a fabulous touch. Along with Jo Humphrey's design help, she added all the warm and charming touches you see today. The craftsmen in Southampton were impressed with both the special design of the woodwork and that an owner could get involved to that level of detail. It made for a very attractive interior.

The design of the galley and the placement of the washer and dryer forward were all my wife's significant contribution to the building of the boat and have made our life on board all the years better. She was intended to be our beautiful and very upscale cruising boat that could work for the two of us or when we added parts or our large family. She succeeded.

---

The boat turns heads in every port – just one beautiful classic cutter.

## **BROKER'S COMMENTS**

---

RAVENOUS II is the ideal yacht in many respects. She can cruise anywhere in the world in comfort and luxury and is happy on the race course – whether a Newport to Bermuda Race or local around-the-buoys race. Best of all, her shallow draft lets her visit many destinations that are normally not possible for boats of her size.

## **EXCLUSIONS**

---

- All personal belongings and all other items not expressly listed in the above inventory are excluded from the sale.
- Interior decorative artwork and scatter cushions are specifically excluded from the sale.

## **Исключения**

---

При продаже яхты исключаются личные вещи владельца.

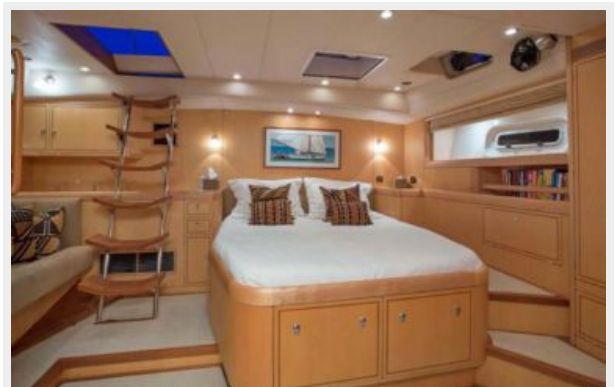
## **Отказ от ответственности**

---

Компания предоставляет описание судна или яхты добросовестно, но не может гарантировать точность этой информации, а также не ручается за техническое состояние. Покупатель должен проинструктировать своих агентов или оценщиков исследовать представленную информацию более подробно, по собственному желанию. Продажа судна или яхты, изменение цены или снятие с продажи будет происходить без предварительного уведомления.

# ФОТОГРАФИИ

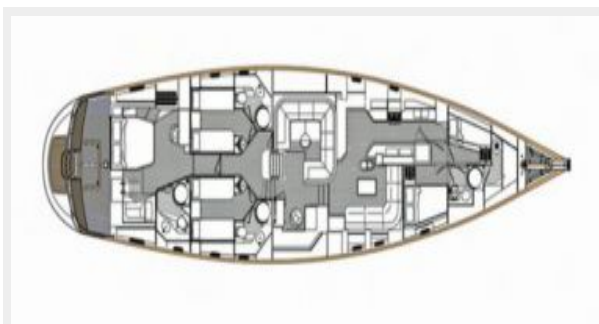












# КОНТАКТЫ

Андрей Шестаков (Andrey Shestakov) – ведущий яхтенный брокер отдела продаж яхт и судов компании Shestakov Yacht Sales Inc. Официальный представитель Shestakov Yacht Sales Inc. для русскоговорящих клиентов в центральном офисе компании в Майами/Форт Лодердейл/Флорида/США.

## Контактная информация

Email: [andrey@shestakovyachtsales.com](mailto:andrey@shestakovyachtsales.com)

Web: [shestakovyachtsales.com](http://shestakovyachtsales.com)

## Телефоны

Краснодарский край: **+7(918)465-66-44**

США, Майами, Флорида: **+1(954)274-4435**

## Время работы

Понедельник – Суббота: **9:00 - 21:00**  
EDT

Воскресенье: **Закрето**

## Адрес



Harbour Towne Marina, 850 NE 3rd St,  
STE 213, Dania, FL 33004