

## NAIA — BENETEAU



**Builder:** BENETEAU

**LOA:** 50' 0" (15.24m)

**Year Built:** 2011

**Beam:** 15' 11" (4.85m)

**Model:** Cruising Sailboat

**Max Draft:** 6' 1" (1.85m)

**Price:** PRICE ON APPLICATION

**Location:** United States

Our experienced yacht broker, Andrey Shestakov, will help you choose and buy a yacht that best suits your needs **Naia — BENETEAU** from our catalogue. Presently, at Shestakov Yacht Sales Inc., we have a wide variety of yachts available on our sale's list. We also work in close contact with all the big yacht manufacturers from all over the world.

If you would like to buy a yacht **Naia — BENETEAU** or would like help answering any questions concerning purchasing, selling or chartering a yacht, please call **+1(954)274-4435**

# TABLE OF CONTENTS

TABLE OF CONTENTS	2
SPECIFICATIONS	4
Overview	4
Basic Information	9
Dimensions	9
Speed, Capacities and Weight	9
Accommodations	10
Hull and Deck Information	10
Engine Information	10
DETAILED INFORMATION	11
2012 Beneteau Sense 50	11
Accommodations	12
Damage History	13
Sails and Rigging	14
Galley	15
Electronics	15
Deck	15
Additional	16
Exclusions	16
Disclaimer	16
PHOTOS	17
Manufacturer Provided Image	17
Main Salon-Panorama	17
Main Salon	17
Salon to Master	17
Galley view from companionway	18
Galley	18
Main Salon	18

main salon out to cockpit	18
Salon Portside	19
Master Head	19
Master Head	19
Cockpit	19
Starboard Helm	20
Dock n Go	20
Cockpit	20
port tack	20
12' Dinghy on Davits	20
Rocna Anchor System	20
Underwater Lights	21
Sunset in Bahamas	21
CONTACTS	22
Contact details	22
Telephones	22
Office hours	22
Address	22

# SPECIFICATIONS

## Overview

Naia is a cutting-edge contemporary monohull with innovative design. Naia is one of the best-equipped cruising monohulls in the market, with no expense spared in outfitting this amazing yacht. Offering the upmost in safety and performance, Naia's spacious cockpit includes a dual helm and plenty of space on deck and below. Owner needs to sell due to downsizing boats. Naia is in great condition with many factory options listed.

Naia has all the safety equipment required for long distance traveling and with all the comfort that you would expect at home.

**Factory and Additional Options:** Dock & Go system with the latest software, stern arch with davits, chilled water air conditioning 24000 BTU, 7.5KW generator, 3-cabin layout, shallow draft, sensation trim, 4 electric winches, TV on electric lift, additional fuel tank, ultra leather upholstery, microwave, 2 electric heads. Raymarine equipment: e95 helm station, AIS, depth/speed and wind, convertible saloon table, 110V electricity, folding prop, cockpit cushions. Nette Stone Outside upholstery, graphite coachroof spray-hood, Ultra-leather Promessa cushions, Anodized furling mast with mylar sail, folding electric salon table, electric lateral blinds, extra fuel tank, Dock N Go, Bow-thruster, autopilot, Sail-drive on Pod, Sensation Trim level, electric 60.2 genoa winches, safe, electric quiet-flush heads, High Def Radar, Wireless Sea talk autopilot with remote, Raymarine VHF Ray 49, AIS Receiver 500, Spin halyard, Navionics Platinum east coast chip.

**Rigging/Sail plan:** Mast-furling mainsail, genoa on furler, easy sail track, 2 spinnaker halyards, adjustable back stay.

- RIB-10'6" AB Inflatable w/20HP Tohatsu
- 840 W Solar Panels 32V w Outback Controller
- Generator 7.5 W Cummings
- 2000W inverter
- Batteries: 4 Lifetime house batteries, 4 Thruster, 2 Furling, 1 House, 1 Gen
- Electric blinds and motorized companionway door
- 3 zones 24000 BTU chilled water system
- Watermaker 40G/hr
- Washing machine
- Ice Maker
- Microwave
- TV's in Main Salon and master
- SS Icon radio
- Navionics Platinum East Coast Chip
- AIS Receiver Raymarine
- VHF Raymarine 49

- High Definition Radar
- 110V and 220V shore power capability
- Wireless Seataalk Autopilot -Remote Control
- USA propane and European butane gas connectors
- Plastimo offshore 6- person liferaft
- Rocna 35 Stainless steel anchor

## Cockpit

- Self-draining cockpit
- 1 Port cockpit locker (Access to technical space)
- 1 Starboard cockpit locker (Access to technical space)
- Gas locker beneath starboard cockpit seat
- Natural solid wood slatted cockpit benches
- 1 Liferaft locker in cockpit sole
- 2 Steering wheel consoles: Stainless steel steering wheels - 900 mm diameter - leather covered - rudder systems on partition - metal cable transmission system - Stainless steel guard rail - navigation instrument stand (optional instruments)
- Deck hole for access to tiller system
- 1 tiller
- 2 Steering compass on binacelle
- Engine throttle and control panel to starboard
- Dock & Go to starboard controls
- Starboard cockpit table convertible into sunbed
- 2 waterproof loudspeakers on fixed arch
- Cockpit lighting integrated in fixed arch
- 1 PMMA companionway hatch retracts beneath deck
- Hinged electric PMMA companionway door
- 2 Fixed deck windows

## Accommodations

### INTERIOR

- Fruitwood Apli joinery
- Laminated oak style parquet soles
- Fore hull and bulkhead covered with vinyl fabric ceiling
- Marine mattresses in the cabins

### SALON

- Headroom: 6'3"
- U shaped saloon bench
- Saloon table in only 1 piece, Varnished wood top with inlay, Aluminium legs.
- 1 central unit with folding bench seat - Storage space - Bar
- Cubby hole lockers and storage along the hull, Storage under bench seats

- 1 Hull porthole with curtain
- 1 Fixed deck house side window with concertina blind
- 1 Fixed wrap-around window to cockpit
- 1 flush deck hatch with blind / Mosquito net

## FORWARD CABIN

- Headroom: 6.3'
- Central double bed
- 2 Hanger closets, Cupboard, Cubby hole lockers, glove boxes - 3 Drawers
- Mirror
- 2 hull portholes with curtain
- 2 Opening deck hatch with blind / mosquito nets

## STARBOARD FORWARD HEAD COMPARTMENT

- Headroom: 6'2
- Private entrance through forward cabin
- Separate moulded shower, shower mixer tap hot / cold water, Shower screen in PMMA
- Electric marine toilet
- Washbasin - Synthetic resin worktop - Mixing tap hot water / cold water
- 2 Mirrors
- Cupboard and cubby hole
- 2 flush deck hatches with blinds / mosquito nets

## PORT CABIN

- Headroom: 6.4'
- Washer/Dryer
- Office/single berth
- Hanging locker, Cupboards, Lockers and cubby holes
- 1 Hull porthole with curtain
- 1 Opening porthole with curtain
- 2 Opening deck hatches with blind / mosquito nets

## PORT WASHROOM

- Headroom: 6'.5"
- Access by passageway - Private entrance through port cabin
- Separate shower, shower mixer tap hot / cold water, shower screen in PMMA
- Electric Marine toilet
- 1 Rigid holding tank 80 L
- Washbasin - Synthetic resin worktop - Mixing tap hot water / cold water
- Mirror
- Cupboard and cubby hole
- 1 Fitted deckhouse side window with curtain

- 1 Opening deck hatch with shutter / Mosquito net

## STARBOARD CABIN (OFFICE)

- Sliding entrance door
- Washer/Dryer
- Office/Single Berth w/mattress insert
- Hanger closets, Cupboards, Cubby hole lockers
- 1 flush deck hatch with blind / Mosquito net
- 1 Hull porthole with curtain

## Electrical

- 12 V circuit - 220 V circuit
- 4 Lifetime House Batteries, 4 Thruster, 2 Furling, 1 engine, 1 gen
- Battery charger - shore power - Charge divider
- Electrical panel (Circuit breakers - Voltmeter - Water gauge - Fuel gauge - Battery warning - Fuel warning)
- Interior lighting: LED ceiling lights, Reading lights, White/ red light fitting
- Outside lighting: 1 Forward and aft navigation lights - 1 Engine navigation light / Crosstree light forward of mast - 1 Mooring light on masthead - 1 Deck light
- Wire runs for options cables

## Galley

- Headroom: 6'4"
- Lengthways kitchen
- Synthetic resin worktop grey
- 1 Sink with 2 rectangular bowls
- 1 Mixer tap cold water / hot
- 1 Gas cooker 3 hobs, Stainless steel oven on mountings
- 1200 liter refrigerator, 12 V Refrigeration unit, front and top opening
- 1100 liter ice box, 12 V Refrigeration unit, top opening
- Cupboards - Drawers - equipped lockers
- 1 Hull porthole with curtain
- 1 Fixed deck house side window with concertina blind
- 1 Fixed wrap-around window to cockpit + Blinds

## Deck

### SAFETY ON DECK

- 1 Open stainless steel forward pulpit
- 2 fixed stainless steel pushpins
- Stainless steel backrests fitted to helm seats
- 1 Ring lifebuoy bracket

- 1 Outboard engine bracket
- 1 Flag pole socket
- Double guardrail and stainless steel stanchions - Opening to port and to starboard in guardrail
- 2 Stainless steel handrails on deck
- 2 Stainless steel handrails on fixed arch

## Propulsion

- Engine Yanmar Diesel 75 hp Sail Drive
- Engine control - Key ignition - Control panel in cockpit
- Engine compartment: Foam soundproofing - Ventilation: 1 air intake and 1 pressured air outlet
- 1 Alternator 12 V 50AMP
- 2 Rotation molded diesel tank 220 total - Electronic gauge - Low level alarm - 1 Deck filler
- Filters: Sea water - Diesel - Decanter
- Fixed three blade propeller and spare
- Engine access via companionway and machinery space (opening with gas piston)

## Sails & Rigging

### RIGGING

- Standard mast SELDEN 9/10 electro-polished aluminium installed on the deck, 2 levels of advanced cross trees - MDS roller slides
- Anodised aluminium boom
- Discontinuous stainless steel standing rigging
- Backstay: Bridle
- Rigid kicking strap with tackle
- Genoa electric furling system
- 2 Blocks "STANDUP" on mainsheet arch
- 2 genoa tracks with piston adjusted traveller cars - 2 Genoa sheet return blocks
- Rigging run back to cockpit (except boom topping lift)
- Complete running rigging: Main halyard, genoa halyard with clutch on mast and cleat, Boom topping lift with cleat on mast, Mainsheet, 2 Genoa sheets 2 fast reefing ropes, 1 manual reef
- 12 Jammers, and other control lines
- 2 rope boxes
- 1 Spinnaker Post

### WINCHES

- 2 Self-tailing electric genoa sheet winches (H60.2 STC)
- 2 Self tailing electric coachroof winches (H46.2 STC)
- 2 Winch handles SpeedGrip
- 2 Winch handle boxes



## SAILS

- Furling genoa with UV protective strip
- In-Mast electric furling
- Lazy Jack and Easy bag in Natural colour

## MOORING - ANCHORING

- Self-draining chain locker - Clench bolt
- 1 Opening access cover to chain locker
- Stainless steel bow fitting 2 rollers
- 12 V - 1500 W Vertical electrical windlass - Remote control and chain counter
- 8 Stainless steel mooring cleats - Stainless steel deck line protection
- 150' 1/2" chain
- 75 lb Rocna Anchor

DYSID:3186138

## Basic Information

**Category:** Cruising Sailboat

**Model Year:** 2011

**Year Built:** 2011

**Country:** United States

## Dimensions

**LOA:** 50' 0" (15.24m)

**LWL:** 46' 1" (14.05m)

**Beam:** 15' 11" (4.85m)

**Max Draft:** 6' 1" (1.85m)

**Clearance:** 74' 3" (22.63m)

**MFG Length:** 49' 2" (14.99m)

## Speed, Capacities and Weight

**Displacement:** 31195 Pounds

**Water Capacity:** 95 Gallons

**Holding Tank:** 20 Gallons

**Fuel Capacity:** 110 Gallons

## Accommodations

---

**Total Cabins:** 2

**Total Berths:** 3

**Total Heads:** 2

## Hull and Deck Information

---

**Hull Material:** Fiberglass

**Hull Configuration:** Monohull

## Engine Information

---

**Engines:** 1

**Manufacturer:** Yanmar

**Engine Type:** Inboard

**Fuel Type:** Diesel

---

# DETAILED INFORMATION

---

---

## 2012 Beneteau Sense 50

---

2012 Sense 50 with multiple upgrades. Owner needs to sell due to downsizing boats. Naia is in great condition with many factory options listed.

Naia has all the safety equipment required for long distance traveling and with all the comfort that you would expect at home.

**Factory options:** Dock & Go system with the latest software, stern arch with davits, chilled water air conditioning 24000 BTU, 7.5KW generator, 3-cabin layout, shallow draft, sensation trim, 4 electric winches, TV on electric lift, additional fuel tank, ultra leather upholstery, microwave, 2 electric heads. Raymarine equipment: e95 helm station, AIS, depth/speed and wind, convertible saloon table, 110V electricity, folding prop, cockpit cushions.

**Other Options:** RIB-10'6" AB Inflatable w/20HP Tohatsu, 840 w Solar Panels 32V w Outback Controller, Generator 7.5 W Cummings , 2000W inverter, 12 Batteries, Electric blinds and motorized companionway door, 3 zones 24000 BTU chilled water system, Watermaker 40G/hr, Washing machine, Ice Maker, Microwave, TV's in Main Salon and master, SS Icon radio, Navionics Platinum East Coast Chip, AIS Receiver Raymarine, VHF Raymarine 49, High Definition Radar, 110V and 220V shore power capability, Wireless Seataalk , long range wifi antenna, Autopilot -Remote Control, USA propane and European butane gas connectors, Plastimo offshore 6- person liferaft, Rocna 35 Stainless steel anchor, full canvas with side shades

**Rigging/Sail plan:** In-Mast-furling mainsail, genoa on furler, easy sail track, 2 spinnaker halyards, adjustable back stay.

- RIB-10'6" AB Inflatable w/20HP Tohatsu
- 840 w Solar Panels 32V w Outback Controller
- Generator 7.5 W Cummings
- 2000W inverter
- Batteries: 4 Lifetime house batteries, 4 Thruster, 2 Furling, 1 House, 1 Gen
- Electric blinds and motorized companionway door
- 3 zones 24000 BTU chilled water system
- Watermaker 40G/hr
- Washing machine
- Ice Maker
- Microwave
- TV's in Main Salon and master
- SS Icon radio
- Navionics Platinum East Coast Chip

- AIS Receiver Raymarine
- VHF Raymarine 49
- High Definition Radar
- 110V and 220V shore power capability
- Wireless Seataalk Autopilot -Remote Control
- USA propane and European butane gas connectors
- Plastimo offshore 6- person liferaft
- Rocna 35 Stainless steel anchor

## Accommodations

---

The salon/galley is accessible via two steps from the cockpit. The main salon feels like an extension of the outer living area. Beautiful contemporary design in both areas with comfortable. custom-leather U-shaped salon seating around an expandable teak table that can be raised or lowered. Fold-down bench seat with backrest built into island cabinet with liquor/wine storage.

### SALON

- Headroom: 6'3"
- U shaped saloon bench
- Saloon table in only 1 piece, Varnished wood top with inlay, Aluminium legs.
- 1 central unit with folding bench seat - Storage space - Bar
- Cubby hole lockers and storage along the hull, Storage under bench seats
- 1 Hull porthole with curtain
- 1 Fixed deck house side window with concertina blind
- 1 Fixed wrap-around window to cockpit
- 1 flush deck hatch with blind / Mosquito net

### FORWARD CABIN

- Headroom: 6.3'
- Central double bed
- 2 Hanger closets, Cupboard, Cubby hole lockers, glove boxes - 3 Drawers
- Mirror
- 2 hull portholes with curtain
- 2 Opening deck hatch with blind / mosquito nets

### STARBOARD FORWARD HEAD COMPARTMENT

- Headroom: 6'2
- Private entrance through forward cabin
- Separate moulded shower, shower mixer tap hot / cold water, Shower screen in PMMA
- Electric marine toilet
- Washbasin - Synthetic resin worktop - Mixing tap hot water / cold water
- 2 Mirrors

- Cupboard and cubby hole
- 2 flush deck hatches with blinds / mosquito nets

## PORT CABIN

- Headroom: 6.4'
- Washer/Dryer
- Office/single berth
- Hanging locker, Cupboards, Lockers and cubby holes
- 1 Hull porthole with curtain
- 1 Opening porthole with curtain
- 2 Opening deck hatches with blind / mosquito nets

## PORT WASHROOM

- Headroom: 6'.5"
- Access by passageway - Private entrance through port cabin
- Separate shower, shower mixer tap hot / cold water, shower screen in PMMA
- Electric Marine toilet
- 1 Rigid holding tank 80 L
- Washbasin - Synthetic resin worktop - Mixing tap hot water / cold water
- Mirror
- Cupboard and cubby hole
- 1 Fitted deckhouse side window with curtain
- 1 Opening deck hatch with shutter / Mosquito net

## STARBOARD CABIN (OFFICE)

- Sliding entrance door
- Washer/Dryer
- Office/Single Berth w/mattress insert
- Hanger closets, Cupboards, Cubby hole lockers
- 1 flush deck hatch with blind / Mosquito net
- 1 Hull porthole with curtain

## INTERIOR

- Fruitwood Alpi joinery
- Laminated oak style parquet soles
- For-hull and bulkhead covered with vinyl fabric ceiling

## Damage History

Although this yacht has been fully repaired, Naia has a damage history. Contact us for more details.

---

## Sails and Rigging

---

### Sails & Rigging

- Standard mast SELDEN 9/10 electro-polished aluminium installed on the deck, 2 levels of advanced cross trees - MDS roller slides
- Anodised aluminium boom
- Discontinuous stainless steel standing rigging
- Backstay: Bridle
- Rigid kicking strap with tackle
- Genoa electric furling system
- 2 Blocks "STANDUP" on mainsheet arch
- 2 genoa tracks with piston-adjusted traveller cars -
- 2 Genoa sheet return blocks
- Complete running rigging: Main halyard, genoa halyard with clutch on mast and cleat, Boom topping lift with cleat on mast, Mainsheet, 2 Genoa sheets 2 fast reefing ropes, 1 manual reef
- 12 Jammers, and other control lines
- 2 rope boxes
- 1 Spinnaker Post

### WINCHES

- 2X H60 2-Speed Self-tailing electric genoa sheet winches
- 2X H46 2-Speed Self tailing electric coachroof winches
- 1 H46 Multipurpose winch
- 2 Winch handles SpeedGrip
- 2 Winch handle boxes

### SAILS

- In-mast electric furling with Mylar tri-radial Mainsail
- Furling genoa with UV protective strip

### MOORING - ANCHORING

- Self-draining chain locker - Clench bolt
- 1 Opening access cover to chain locker
- Stainless steel bow fitting 2 rollers
- 12 V - 1500 W Vertical electrical windlass - Remote control and chain counter
- 8 Stainless steel mooring cleats - Stainless steel deck line protection
- 150' 1/2" chain
- 75 lb Rocna Anchor

---

## Galley

---

The contemporary euro-designed galley runs the entire starboard side of the main salon.

- Stainless steel, 3-burner propane stove with oven
- Synthetic grey, resin countertop with dual sinks
- 1 Mixer tap cold water / hot
- 1 Gas cooker 3 hobs, Stainless steel oven on mountings
- Large 1200 Liter, 12V refrigerator with front and top opening
- Large freezer with top opening
- Numerous drawers and cupboards for storage
- sliding pullout trash drawer
- built-in ice-maker
- 1 Fixed deck house side window with concertina blind
- 1 Fixed wrap-around window to cockpit + electric blinds

---

## Electronics

---

- Raymarine E120WGPS Chartplotter/Radar
- Raymarine TFT ST 70 Wind, depth, speed
- Raymarine 500 AIS Reciever
- 2X Raymarine E90 Chartplotter
- VHF Radio
- Icom SSB Radio
- Wireless Seataalk Remote for Autopilot
- Cockpit RAM VHF
- 12 V circuit - 220 V circuit
- 4 Lifetime House Batteries, 4 Thruster, 2 Furling, 1 engine, 1 gen
- Battery charger - shore power - Charge divider
- Electrical panel (Circuit breakers - Voltmeter - Water gauge - Fuel gauge - Battery warning - Fuel warning)
- Interior lighting: LED ceiling lights, reading lights, white/ red light fitting
- Outside lighting: 1 Forward and aft navigation lights - 1 Engine navigation light / Crosstree light forward of mast - 1 Mooring light on masthead - 1 Deck light
- Wire runs for options cables

---

## Deck

---

- 1 Open stainless steel forward pulpit
- 2 fixed stainless steel pushpins
- Stainless steel backrests fitted to helm seats
- 1 Ring lifebuoy bracket

- 1 Outboard engine bracket
- 1 Flag pole socket
- Double guardrail and stainless steel stanchions - Opening to port and to starboard in guardrail
- 2 Stainless steel handrails on deck
- 2 Stainless steel handrails on fixed arch

## MOORING - ANCHORING

- Self-draining chain locker - Clench bolt
- 1 Opening access cover to chain locker
- Stainless steel bow fitting 2 rollers
- 12 V - 1500 W Vertical electrical windlass - Remote control
- 8 Stainless steel mooring cleats - Stainless steel deck line protection

## Additional

---

### Engine

- Yanmar Diesel 75 hp Sail Drive
- Engine control - Key ignition - Control panel in cockpit
- Engine compartment: Foam soundproofing - Ventilation: 1 air intake and 1 pressured air outlet
- 1 Alternator 12 V
- 1 Rotation molded diesel tank 415 L (in the saloon) - Electronic gauge - Low level alarm - 1 Deck filler
- Filters: Sea water - Diesel - Decanter
- Fixed three blade propeller
- Engine access via companionway and machinery space (opening with gas piston)

## Exclusions

---

Owner's personal belongings.

## Disclaimer

---

The Company offers the details of this vessel or yacht in good faith but cannot guarantee or warrant the accuracy of this information nor warrant the condition of the vessel. A buyer should instruct his representatives, agents, or his surveyors, to investigate such details as the buyer desires validated. This vessel or yacht is offered subject to prior sale, price change, or withdrawal without notice.



# PHOTOS

**Manufacturer Provided Image**



**Main Salon-Panorama**



**Main Salon**



**Salon to Master**



**Galley**



**Galley view from companionway**



**main salon out to cockpit**



**Main Salon**



**Salon Portside**



**Master Head**



**Master Head**



**Cockpit**





**Starboard Helm**



**Dock n Go**



**Cockpit**



**port tack**



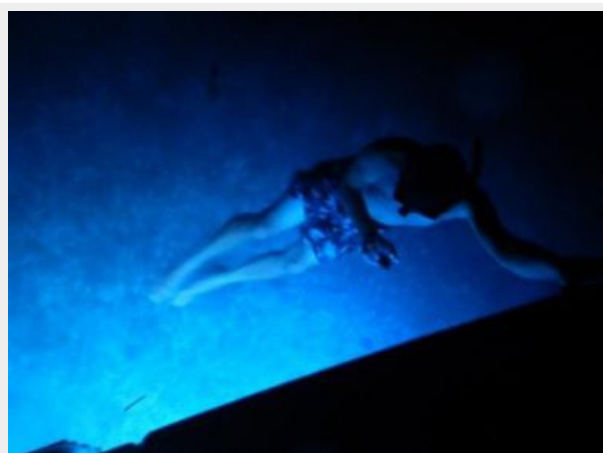
**12' Dinghy on Davits**



**Rocna Anchor System**



## Underwater Lights



## Sunset in Bahamas



# CONTACTS

---

Andrey Shestakov, leading yacht broker of the sales department of Shestakov Yacht Sales Inc. Shestakov Yacht Sales Inc., the official representative of the Miami/Fort Lauderdale FL headquarters.

## Contact details

---

Email:  
**andrey@shestakovyachtsales.com**

Web: [shestakovyachtsales.com/en/](http://shestakovyachtsales.com/en/)

## Telephones

---

USA: **+1(954)274-4435**

## Office hours

---

Monday – Saturday: **9:00 - 21:00 EDT**

Sunday: **closed**

## Address

---



Harbour Towne Marina, 850 NE 3rd St,  
STE 213, Dania, FL 33004