

DRAGONFLY — INTREPID



Builder: INTREPID

Year Built: 2012

Model: Center Console

Price: PRICE ON APPLICATION

Location: United States

LOA: 40' 0" (12.19m)

Beam: 11' 1" (3.38m)

Max Draft: 3' 0" (0.91m)

Cruise Speed: 35 Kts. (40 MPH)

Max Speed: 57 Kts. (66 MPH)

Our experienced yacht broker, Andrey Shestakov, will help you choose and buy a yacht that best suits your needs **Dragonfly — INTREPID** from our catalogue. Presently, at Shestakov Yacht Sales Inc., we have a wide variety of yachts available on our sale's list. We also work in close contact with all the big yacht manufacturers from all over the world.

If you would like to buy a yacht **Dragonfly — INTREPID** or would like help answering any questions concerning purchasing, selling or chartering a yacht, please call **+1(954)274-4435**

TABLE OF CONTENTS

TABLE OF CONTENTS	2
SPECIFICATIONS	4
Overview	4
Basic Information	4
Dimensions	4
Speed, Capacities and Weight	5
Accommodations	5
Hull and Deck Information	5
Engine Information	5
DETAILED INFORMATION	6
Features:	6
Exclusions	7
Disclaimer	7
PHOTOS	8
Bow	8
Port Aft	8
Stern	8
Cockpit with Fold Down Seating	8
Tackle Station / Hard Top	8
Swing in Dive Door	8
Helm Seat	9
Helm	9
Furuno Electronics	9
Forward Seating	9
Bow	9
Bow Looking Aft	9
Cabin	10
Dinette / Forward Berth	10

Head	10
Galley	10
Aft Berth	10
Windlass	10
T-Top	11
Port Profile	11
Port Bow	11
Stbd Profile	11
Stbd Bow	11
CONTACTS	13
Contact details	13
Telephones	13
Office hours	13
Address	13

SPECIFICATIONS

Overview

"Dragonfly" is a single-owner Intrepid 400 Cuddy 2012 that has been lift-kept since new without bottom paint. Her yellow hull is in immaculate condition. Triple Mercury 300 Verados (under 470 hours) give her a 30kt. cruise at 1.1mpg and a top speed of around 50kts.

Features Include:

- **Inverter Freedom 2000 w/ 8D Lifeline Battery**
- **Air-Conditioned Cabin**

- **Swing-In Dive Door with Fold Out Ladder**
- **Fold-Down Cockpit Seating**
- **Furuno Electronics Package**
- **T-Top (no arch)**
- **Bow Thruster; Electric Windlass**
- **2 Berths; 1 Head**

She's easy to see located 5 minutes from the Ft. Lauderdale Airport. DYSID:3178687

Basic Information

Category: Center Console

Model Year: 2012

Year Built: 2012

Country: United States

Dimensions

LOA: 40' 0" (12.19m)

Beam: 11' 1" (3.38m)

Max Draft: 3' 0" (0.91m)

Speed, Capacities and Weight

Cruise Speed: 35 Kts. (40 MPH)

Cruise Speed RPM: 4000 Kts.

Max Speed: 57 Kts. (66 MPH)

Max Speed RPM: 6000 Kts.

Displacement: 18000 Pounds

Water Capacity: 100 Gallons

Holding Tank: 20 Gallons

Fuel Capacity: 400 Gallons

Accommodations

Total Cabins: 1

Total Heads: 1

Hull and Deck Information

Hull Material: Fiberglass

Hull Configuration: Deep Vee

Engine Information

Engines: 2

Manufacturer: Mercury

Model: Verado

Engine Type: Outboard

Fuel Type: Gas/Petrol

DETAILED INFORMATION

Features:

Inverter: Freedom 2000 with an 8D Lifeline Battery

Transom/Cockpit:

- Mercury 300 Verado Triple

PORT SERIAL #:1B842676

CENTER SERIAL #:1B842478

STD SERIAL #:1B842555

- 2-White Under Water Lights Facing Aft
- Bennett Trim Tabs
- Hullside Door Swing In with Fold Out LadderFiberglass Folding Rear Bench Seat - Integrated
- JL Audio Speakers
- LED Cockpit Lights
- 2 Pop Up Cleats by Rear Seat 8"
- Cockpit Coaming Bolsters
- 4 Rod Holders on Gunwale
- Additional Aft Bilge Pump
- Triple Engine Flush System
- Shore Power with Battery Charger-50' Shorecord

Fiberglass T-Top:

- FLIR NightVision
- 2-Mini Spreader Lights
- 4-Rod Holders on Aft of Hard Top
- Recessed Lights
- TACO GRAND SLAM Adjustable OUTRIGGER SYSTEM
- Powder Coat All Aluminum
- Furuno Open Array Radar

Helm:

- (2) Furuno NavNet 3D GPS
- Simrad AP28 Autopilot
- Furuno RD33
- Clarion Stereo
- Ritchie Compass

- Bennett Trim Tabs
- Vetus Bowthruster
- Fiberglass Seat w/Electric control for & aftFolding foot rest w/Fiberglass platform and leg support
- Plano boxes in aft helm seat

Cabin:

- Hi/Lo Electrically Actuated Cabin V-Berth Table w/Filler Cushion
- Sahara Corian Countertops
- Wood Veneer Cabinets: Cherry Gloss
- Hard Wood Flooring in Cabin: Mahogany and Maple
- Microwave
- Air Conditioning
- Hot Water Heater
- Electric Head
- Macerator for Holding Tank

Bow:

- Vetus Bow Thruster
- Windlass (cons./foot contls &Galv. Plough Anchor.200'line/15'chain
- Upgraded SS Claw Anchor

Exclusions

Owner's personal belongings.

Disclaimer

The Company offers the details of this vessel or yacht in good faith but cannot guarantee or warrant the accuracy of this information nor warrant the condition of the vessel. A buyer should instruct his representatives, agents, or his surveyors, to investigate such details as the buyer desires validated. This vessel or yacht is offered subject to prior sale, price change, or withdrawal without notice.

PHOTOS

Bow



Port Aft



Stern



Cockpit with Fold Down Seating



Tackle Station / Hard Top



Swing in Dive Door



Helm Seat



Helm



Furuno Electronics



Forward Seating



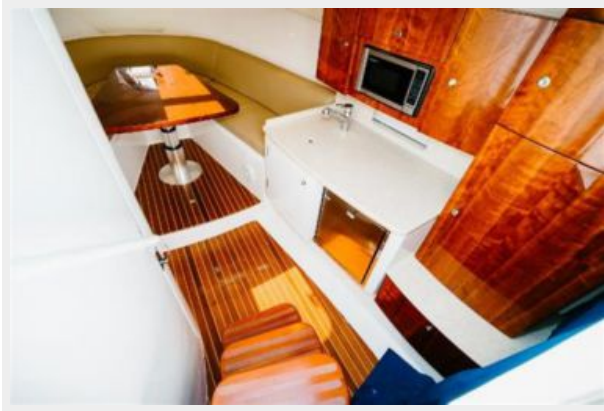
Bow



Bow Looking Aft



Cabin



Dinette / Forward Berth



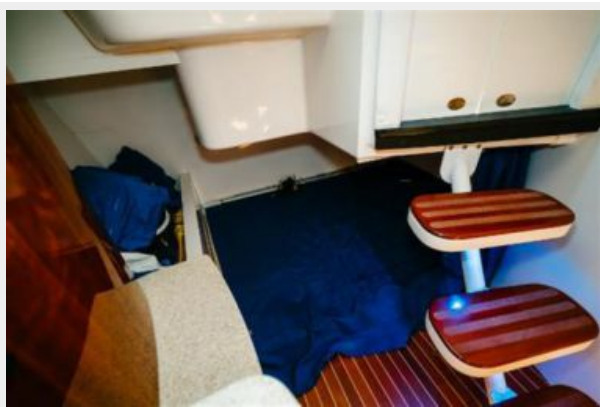
Head



Galley



Aft Berth



Windlass



T-Top



TOTAL									
GPH									
NORTH	RPM	GPS	SPEED	P	C	S	MPG	TRIM	OB LEVEL
	3000	20	18.6	3	6.4	6.0	1.1	0	94
	3500	30	28.6	7	9.1	8.9	1.1	0	97
	4000	36	35	11.0	10.6	10.6	1.1	1	101
	4500	40	40	13.1	12.4	13.6	1		103
	5000	46	45	17.0	15.2	16.8	0.9	4	105
	WOT	58	57.29	8	29.8	29.8	0.6	6	108

TOTAL									
GPH									
SOUTH	RPM	GPS	SPEED	P	C	S	MPG	TRIM	OB LEVEL
	3000	22	21	6.5	6.5	6.6	1.1	0	96
	3500	30	29	8.4	8.4	8.5	1.2	0	97
	4000	35	34	10.6	10.3	10.8	1.1	1	100
	4500	41	40	13.4	12.0	13.1	1.1	2	101
	5000	45	44	16.0	15.9	15.7	0.9	4	103
	WOT	59	58.29	8	29.8	29.8	0.65	6	107

TIME TO PLANE		MAX RPM	6300-6400-6300
NO TABS	8.5 sec	MAX	
TABS	7 sec	RPM RANGE	5700-6400
		CRUISE	
		4000 RPM- 35.5 MPH- 32 GPH- 1.1 MPG	

Port Profile



Port Bow



Stbd Profile



Stbd Bow





CONTACTS

Andrey Shestakov, leading yacht broker of the sales department of Shestakov Yacht Sales Inc. Shestakov Yacht Sales Inc., the official representative of the Miami/Fort Lauderdale FL headquarters.

Contact details

Email: andrey@shestakovyachtsales.com

Web: shestakovyachtsales.com/en/

Telephones

USA: +1(954)274-4435

Office hours

Monday – Saturday: **9:00 - 21:00** EDT

Sunday: **closed**

Address



Harbour Towne Marina, 850 NE 3rd St,
STE 213, Dania, FL 33004