

AUDACITY — BROWARD



Builder: BROWARD

Year Built: 1990

Model: Motor Yacht

Price: PRICE ON APPLICATION

Location: United States

LOA: 105' 0" (32.00m)

Beam: 20' 0" (6.10m)

Min Draft: 5' 6" (1.68m)

Max Draft: 6' 0" (1.83m)

Cruise Speed: 19 Kts. (22 MPH)

Max Speed: 25 Kts. (29 MPH)

Our experienced yacht broker, Andrey Shestakov, will help you choose and buy a yacht that best suits your needs **AUDACITY — BROWARD** from our catalogue. Presently, at Shestakov Yacht Sales Inc., we have a wide variety of yachts available on our sale's list. We also work in close contact with all the big yacht manufacturers from all over the world.

If you would like to buy a yacht **AUDACITY — BROWARD** or would like help answering any questions concerning purchasing, selling or chartering a yacht, please call **+1(954)274-4435**

TABLE OF CONTENTS

TABLE OF CONTENTS	2
SPECIFICATIONS	5
Overview	5
Basic Information	5
Dimensions	5
Speed, Capacities and Weight	5
Accommodations	6
Hull and Deck Information	6
PHOTOS	7
PROFILE - Looking at Port Side - Bow On	7
FLYBRIDGE - Looking to Bow from F/B Helm	7
EXTERIOR - Port Walkway - Looking Forward	7
EXTERIOR - Looking Aft to P H - From Fwd Deck	7
EXTERIOR - Looking Aft from Port Boarding Door	8
EXTERIOR - Looking Aft along Port Walkway	8
EXTERIOR - Teak Swim Platform	8
FLYBRIDGE - Bar w/ Sink, Refrigerator & Storage	8
FLYBRIDGE & BOAT DECK - Looking Aft from F/B	9
BOAT DECK - Looking Aft from Mast	9
MAST - Sat Com Dome	9
POWDER ROOM - Located on Port Side Fwd of Main Salon	12
PILOT HOUSE - New Electronics in Progress	12
AFT DECK - Looking to Starboard at Wet Bar Dining Table and Settee -Foreground	13
MAIN SALON - Stairway to Aft Accommodations	13
ACCOMMODATIONS - Stairway to Main Salon	13
MASTER HEAD - Jacuzzi Tub	13
MASTER HEAD - Looking through Jacuzzi from Vanity	14
MASTER HEAD - Close-Up of Jacuzzi	14

MASTER STATEROOM - Looking toward Master Head	14
MASTER HEAD - L-Shaped Vanity	14
MASTER STATEROOM - Walk-In Cedar-Lined Closet	15
MASTER STATEROOM - King-Size Berth & Head Entrance	15
MASTER STATEROOM - Looking at King-Size Berth & Closet	15
AFT ACOMMODATIONS - Washer & Dryer	15
PORT GUEST STATEROOM - Looking fwd to head Note Upper Hinged Berth	16
PORT S/RM - Looking from Hallway	16
TWIN PORT GUEST S/RM - Looking toward Head - Fold Down Berth to the right	16
PORT GUEST STATEROOM - Looking aft to Cedar-Lined Closet	16
PORT GUEST HEAD - Shower/Tub w/Sliding Glass Encl	17
PORT GUEST HEAD - Vanity	17
STARBOARD VIP STATEROOM - Looking forward at Queen Berth	17
PORT GUEST STATEROOM - Vanity	17
STARBOARD GUEST STATEROOM - Looking aft to Cedar-Lined Closet	18
STARBOARD GUEST HEAD - Shower w/Sliding Glass Enclosure	18
CREWS' QUARTERS - Port Upper and Lower Stateroom	18
CREWS' QUARTERS - Looking fwd to Vee-Berth S/Room	18
CREWS QUARTERS - Looking Aft to Washer-Dryer	19
CREWS QUARTERS - Port Crews Head	19
PORT CREWS S/ROOM - Upper & Lower Berths	19
PORT CREWS S/ROOM	19
ENGINE ROOM - Looking Aft at Aft B/Head & Racors	20
ENGINE ROOM - Main Electrical Panel	20
ENGINE ROOM - Looking to Sbd Side & U/W Exhaust	20
ENGINE ROOM - Looking at Port Side	20
CONTACTS	21
Contact details	21
Telephones	21

Office hours	21
Address	21

SPECIFICATIONS

Overview

"AUDACITY" is busy in Day Charters in Miami

Mechanical & Electronics Upgraded - New Carpeting now Installed

This BROWARD pioneered "EURO-STYLING" & still looks Contemporary

COUNTRY KITCHEN: Total Redo-Appliances, Quartz Counter-top, Cabinets, Tile Floor Detroit Diesels - 350 Hours SMOH, Gens Zero-Timed + A/C & Heads & Electronics Upgraded

Basic Information

Category: Motor Yacht

Model Year: 1990

Year Built: 1990

Country: United States

Dimensions

LOA: 105' 0" (32.00m)

LWL: 93' 0" (28.35m)

Beam: 20' 0" (6.10m)

Min Draft: 5' 6" (1.68m)

Max Draft: 6' 0" (1.83m)

Speed, Capacities and Weight

Cruise Speed: 19 Kts. (22 MPH)

Cruise Speed RPM: 1750 Kts.

Max Speed: 25 Kts. (29 MPH)

Max Speed RPM: 2300 Kts.

Displacement: 180000 Pounds

Water Capacity: 950 Gallons

Holding Tank: 480 Gallons

Fuel Capacity: 6390 Gallons

Accommodations

Total Cabins: 3

Total Berths: 10

Total Heads: 6

Hull and Deck Information

Hull Material: Aluminum

Hull Configuration: Semi-Displacement

PHOTOS

PROFILE - Looking at Port Side - Bow On



FLYBRIDGE - Looking to Bow from F/B Helm



EXTERIOR - Looking Aft to P H - From Fwd Deck



EXTERIOR - Port Walkway - Looking Forward



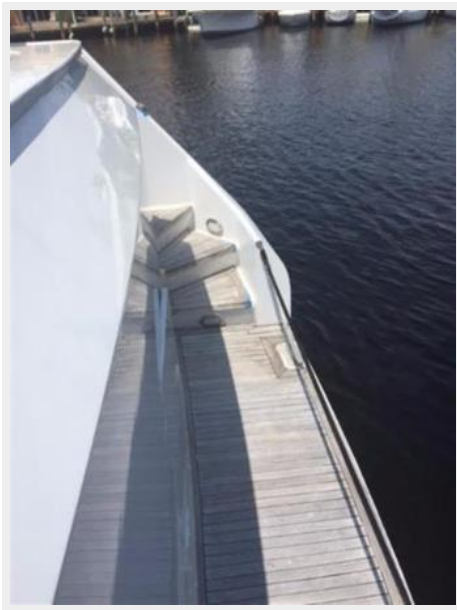
EXTERIOR - Looking Aft along Port Walkway



EXTERIOR - Looking Aft from Port Boarding Door



EXTERIOR - Teak Swim Platform



FLYBRIDGE - Bar w/ Sink, Refrigerator & Storage



FLYBRIDGE & BOAT DECK - Looking Aft from F/B



BOAT DECK - Looking Aft from Mast



MAST - Sat Com Dome









POWDER ROOM - Located on Port Side Fwd of Main Salon

PILOT HOUSE - New Electronics in Progress



AFT DECK - Looking to Starboard at Wet Bar Dining Table and Settee -Foreground



MAIN SALON - Stairway to Aft Accommodations



ACOMMODATIONS - Stairway to Main Salon



MASTER HEAD - Jacuzzi Tub



MASTER HEAD - Looking through Jacuzzi from Vanity



MASTER HEAD - Close-Up of Jacuzzi



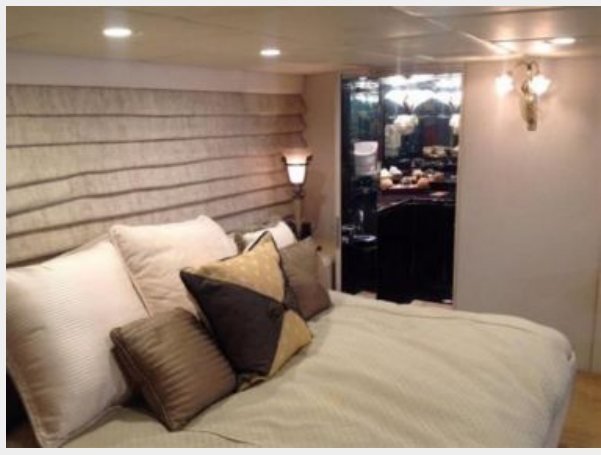
MASTER HEAD - L-Shaped Vanity



MASTER STATEROOM - Looking toward Master Head



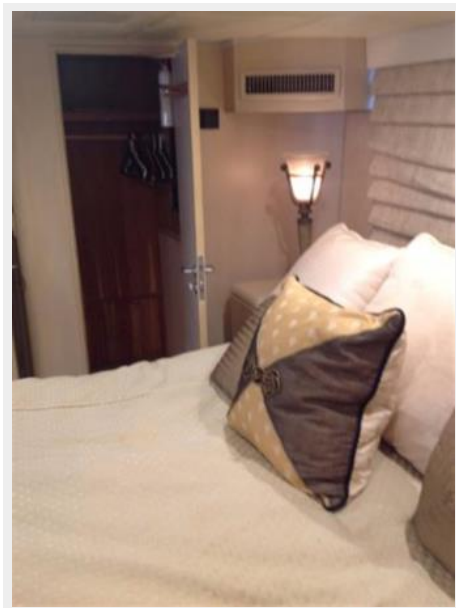
MASTER STATEROOM - King-Size Berth & Head Entrance



MASTER STATEROOM - Walk-In Cedar-Lined Closet



MASTER STATEROOM - Looking at King-Size Berth & Closet



AFT ACOMMODATIONS - Washer & Dryer



PORT GUEST STATEROOM - Looking fwd to head Note Upper Hinged Berth



PORT S/RM - Looking from Hallway



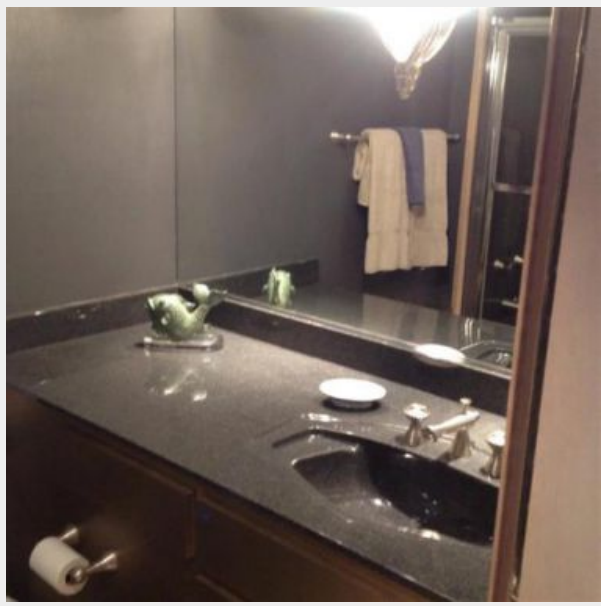
TWIN PORT GUEST S/RM - Looking toward Head - Fold Down Berth to the right



PORT GUEST STATEROOM - Looking aft to Cedar-Lined Closet



PORT GUEST HEAD - Vanity



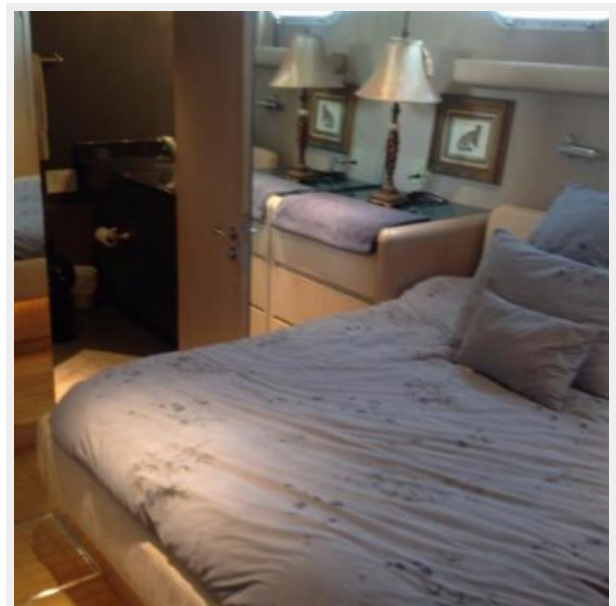
PORT GUEST HEAD - Shower/Tub w/Sliding Glass Encl



PORT GUEST STATEROOM - Vanity



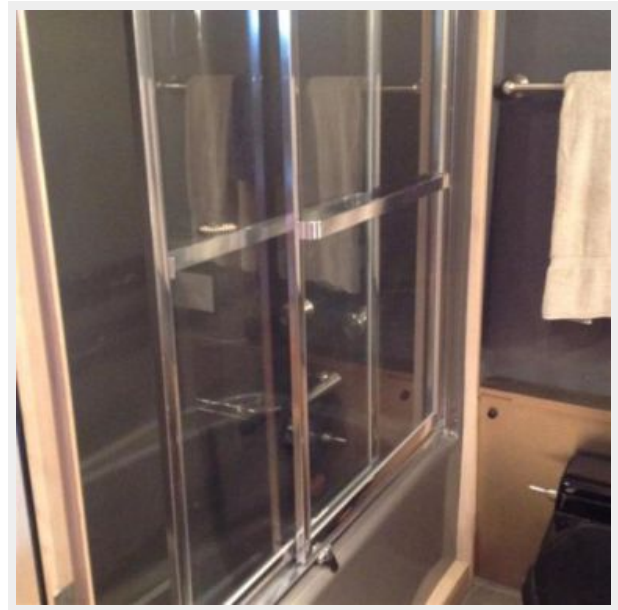
STARBOARD VIP STATEROOM - Looking forward at Queen Berth



**STARBOARD GUEST STATEROOM -
Looking aft to Cedar-Lined Closet**



**STARBOARD GUEST HEAD - Shower
w/Sliding Glass Enclosure**



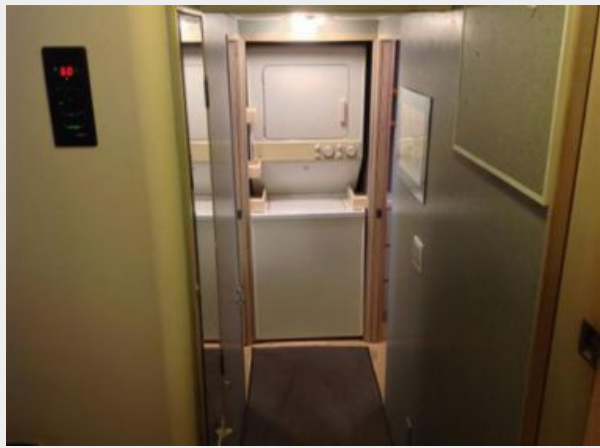
**CREWS' QUARTERS - Port Upper and
Lower Stateroom**



**CREWS' QUARTERS - Looking fwd to Vee-
Berth S/Room**



CREWS QUARTERS - Looking Aft to Washer-Dryer



CREWS QUARTERS - Port Crews Head



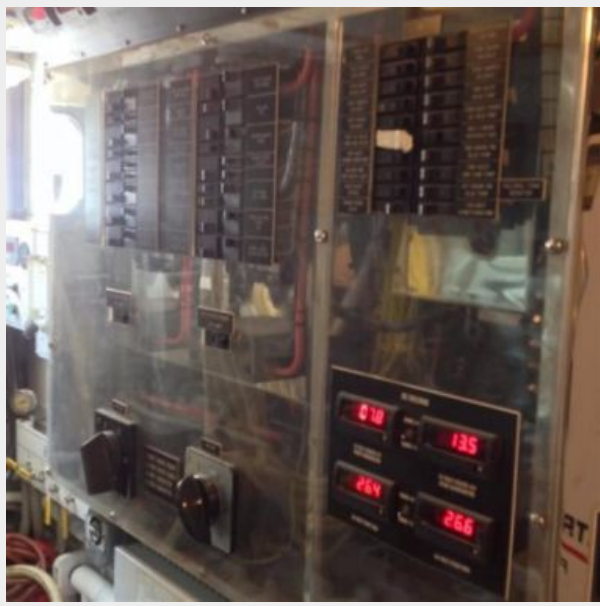
PORT CREWS S/ROOM - Upper & Lower Berths



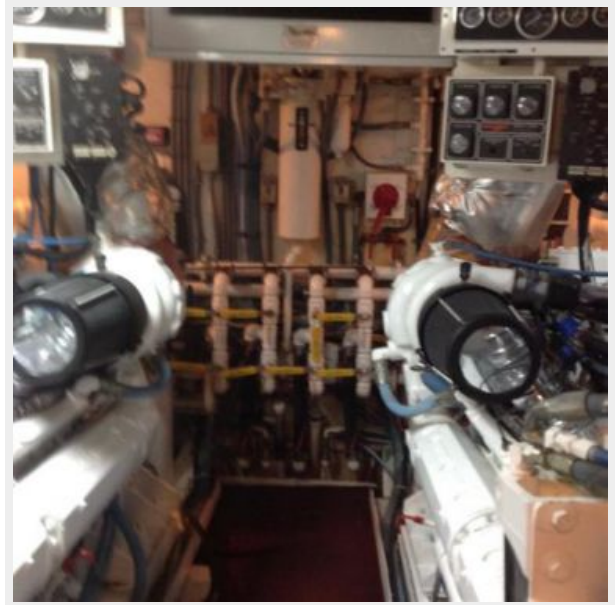
PORT CREWS S/ROOM



ENGINE ROOM - Main Electrical Panel



ENGINE ROOM - Looking Aft at Aft B/Head & Racors



ENGINE ROOM - Looking to Sbd Side & U/W Exhaust



ENGINE ROOM - Looking at Port Side



CONTACTS

Andrey Shestakov, leading yacht broker of the sales department of Shestakov Yacht Sales Inc. Shestakov Yacht Sales Inc., the official representative of the Miami/Fort Lauderdale FL headquarters.

Contact details

Email: andrey@shestakovyachtsales.com

Web: shestakovyachtsales.com/en/

Telephones

USA: +1(954)274-4435

Office hours

Monday – Saturday: **9:00 - 21:00** EDT

Sunday: **closed**

Address



Harbour Towne Marina, 850 NE 3rd St,
STE 213, Dania, FL 33004