

COVE — PRINCESS YACHTS



Builder: PRINCESS YACHTS

Year Built: 2012

Model: Cruiser

Price: PRICE ON APPLICATION

Location: United States

LOA: 52' 0" (15.85m)

Beam: 14' 7" (4.44m)

Max Draft: 3' 9" (1.14m)

Cruise Speed: 26 Kts. (30 MPH)

Max Speed: 34 Kts. (39 MPH)

Our experienced yacht broker, Andrey Shestakov, will help you choose and buy a yacht that best suits your needs **COVE — PRINCESS YACHTS** from our catalogue. Presently, at Shestakov Yacht Sales Inc., we have a wide variety of yachts available on our sale's list. We also work in close contact with all the big yacht manufacturers from all over the world.

If you would like to buy a yacht **COVE — PRINCESS YACHTS** or would like help answering any questions concerning purchasing, selling or chartering a yacht, please call **+1(954)274-4435**

TABLE OF CONTENTS

TABLE OF CONTENTS	2
SPECIFICATIONS	3
Overview	3
Basic Information	3
Dimensions	3
Speed, Capacities and Weight	4
Accommodations	4
Hull and Deck Information	4
Engine Information	4
DETAILED INFORMATION	5
Electronics	5
Engine Notes	5
Manufacturer Provided Description	5
Standard Equipment	5
Exclusions	6
Disclaimer	6
PHOTOS	7
Manufacturer Provided Image: Princess V52 Deck Layout	14
Manufacturer Provided Image: Princess V52 Deck Layout	14
CONTACTS	15
Contact details	15
Telephones	15
Office hours	15
Address	15

SPECIFICATIONS

Overview

"THE COVE" is the lowest priced V52 Princess for sale in the US. Extended CAT Engine Warranties until 2/2019, ease of docking with a Yacht Controller, Lazarette including a washer/dryer with plenty of storage. Hydraulic swim platform that can carry a 3-seater jet ski or 14' tender.

Recent full service of engines & generators. She is a turn-key vessel ready for a new owner.

- Rear Facing Cockpit Docking Camera
- SAT TV Tracvison TV3 by KVH (3 x Dish Network Receivers)
- RayMarine GS125, AIS 600, XM Weather
- Yacht Controller
- Bow & Stern Thrusters
- Hydraulic Swim Platform
- Power Sunroof
- New Black Carpet Runners (8/2017)
- Extended Advantage Platinum Plus CAT Warranty until 2/1/2019 or 1612 hours in total
- Cockpit Grille & Wet Bar
- New Bottom Paint & Zincs (8/2017)
- Recent Engine & Generator Service (10/2017) Filters, Water Pump Impellers
- New Engine Exhaust (4/2017) Performed at Viking Service Center in Palm Beach
- New Dripless Shaft Seals (4/2017) Performed at Viking Service Center in Palm Beach

DYSID:3179459

Basic Information

Category: Cruiser

Model Year: 2012

Year Built: 2012

Country: United States

Dimensions

LOA: 52' 0" (15.85m)

Beam: 14' 7" (4.44m)

Max Draft: 3' 9" (1.14m)

MFG Length: 54' 6" (16.61m)

Speed, Capacities and Weight

Cruise Speed: 26 Kts. (30 MPH)

Cruise Speed RPM: 1950 Kts.

Max Speed: 34 Kts. (39 MPH)

Max Speed RPM: 2600 Kts.

Displacement: 46297 Pounds

Water Capacity: 128 Gallons

Fuel Capacity: 580 Gallons

Accommodations

Total Cabins: 2

Total Heads: 2

Hull and Deck Information

Hull Material: Fiberglass

Hull Configuration: Deep Vee

Engine Information

Engines: 2

Manufacturer: CAT

Model: C-12 Acert

Fuel Type: Diesel

DETAILED INFORMATION

Electronics

- RayMarine GS125 glass touch screen
- Open-Array Radar
- KVH with (3) Dish Network Receivers
- AIS 600
- XM Weather Receiver
- Rear Docking Camera
- Yacht Controller

Engine Notes

- Twin CAT C-12 @ 715hp max speed 35kts (990 HR)
- Extended Warranty expires 2/1/2019
- Onan Generator (1219 HR)

Manufacturer Provided Description

The very latest in sports yacht technology and Princess unique deep-V hull give the V52 the perfect mix of agility, performance and flexible on-board comfort. With her enclosed deck saloon, she delivers significantly larger interior accommodation than a fully open model without sacrificing the thrill of the ride. Triple sliding glass doors and a large electrically controlled sunroof can be opened to the elements, or closed for a welcome respite. From the elegant panelling in the saloon to the convertible sunbed in the cockpit dining area, the V52 is the perfect combination of fine detailing and practical solutions. Below deck, adjacent to the fully fitted galley, the lower saloon provides a separate entertaining area which can be converted to provide additional berths for occasional guests. Alternatively, a permanent third guest cabin can be specified as can an aft crew cabin if required. The owner's stateroom provides a spacious haven in which to relax, complete with ensuite bathroom. Large hull windows fill the cabin with light from each side, accentuating the ambience and quality of the materials and detailing that help to create a calm and luxurious space. There is also a second full-size stateroom forward which offers generous storage and an en-suite bathroom with separate stall shower.

Standard Equipment

- Power-assisted steering system
- Bow thruster (120 kgf/265 lbf)
- 24v DC/240v AC electrical system

- 220v/240v generator (7kW)
- 240v shore power with 80-amp float battery charger
- Remote control electric anchor winch
- Electro-hydraulic trim tabs
- Autopilot
- VHF with DSC R/T
- Speed and distance log
- Echo sounder with alarm
- Remote control searchlight
- Combination microwave/conventional oven/grill
- Refrigerator with deep freeze compartment
- Cockpit wetbar including sink and top loading coolbox
- Electric quietflush toilets
- Saloon LED TV/DVD/Radio/CD
- Teak-laid transom platform/cockpit deck/stairs to side decks
- Cockpit seating/dining area with sunbed conversion
- Electrically operated sliding sunroof
- Electro-hydraulic raise/lower transom platform
- Transom door
- Hot and cold transom shower
- Cockpit cover

Exclusions

Owner's personal belongings.

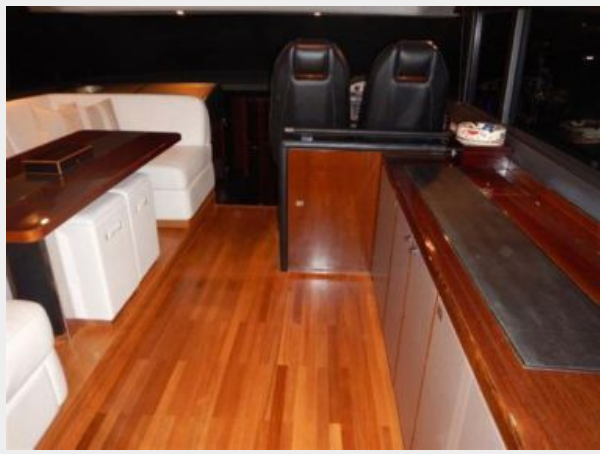
Disclaimer

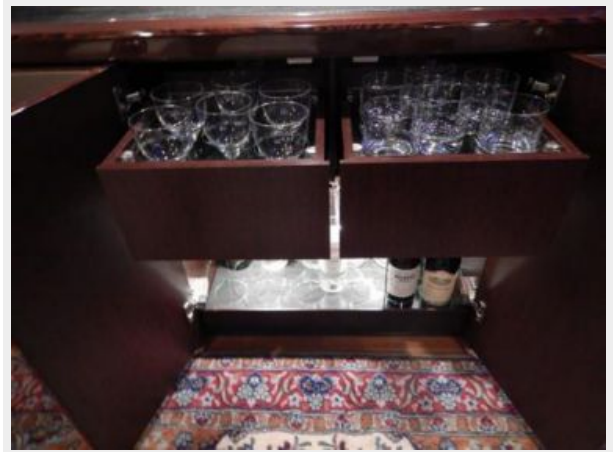
The Company offers the details of this vessel or yacht in good faith but cannot guarantee or warrant the accuracy of this information nor warrant the condition of the vessel. A buyer should instruct his representatives, agents, or his surveyors, to investigate such details as the buyer desires validated. This vessel or yacht is offered subject to prior sale, price change, or withdrawal without notice.

PHOTOS

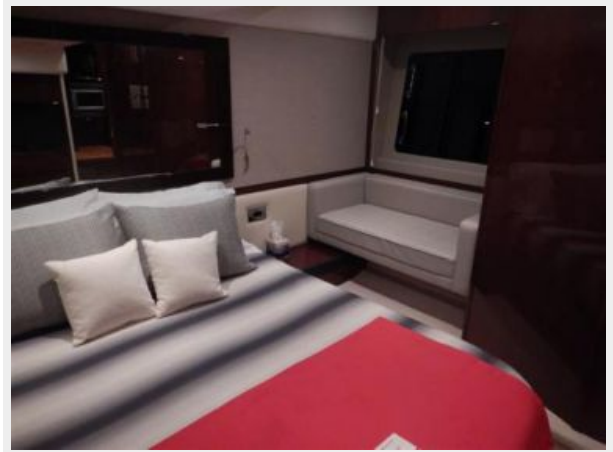
















Manufacturer Provided Image: Princess V52 Deck Layout **Manufacturer Provided Image: Princess V52 Deck Layout**



CONTACTS

Andrey Shestakov, leading yacht broker of the sales department of Shestakov Yacht Sales Inc. Shestakov Yacht Sales Inc., the official representative of the Miami/Fort Lauderdale FL headquarters.

Contact details

Email: andrey@shestakovyachtsales.com

Web: shestakovyachtsales.com/en/

Telephones

USA: +1(954)274-4435

Office hours

Monday – Saturday: **9:00 - 21:00** EDT

Sunday: **closed**

Address



Harbour Towne Marina, 850 NE 3rd St,
STE 213, Dania, FL 33004