

## 46FT 2006 HUNTER 466 LE — HUNTER



**Builder:** HUNTER

**Year Built:** 2006

**Model:** Sloop

**Price:** PRICE ON APPLICATION

**Location:** United States

**LOA:** 46' 0" (14.02m)

**Beam:** 14' 0" (4.27m)

**Min Draft:** 5' 6" (1.68m)

**Max Draft:** 6' 6" (1.98m)

Our experienced yacht broker, Andrey Shestakov, will help you choose and buy a yacht that best suits your needs 46ft 2006 Hunter 466 LE — HUNTER from our catalogue. Presently, at Shestakov Yacht Sales Inc., we have a wide variety of yachts available on our sale's list. We also work in close contact with all the big yacht manufacturers from all over the world.

If you would like to buy a yacht 46ft 2006 Hunter 466 LE — HUNTER or would like help answering any questions concerning purchasing, selling or chartering a yacht, please call +1(954)274-4435

# TABLE OF CONTENTS

TABLE OF CONTENTS	2
SPECIFICATIONS	5
Overview	5
Basic Information	5
Dimensions	6
Speed, Capacities and Weight	6
Accommodations	6
Hull and Deck Information	6
DETAILED INFORMATION	7
Key Features	7
Specifications	7
Electronics	11
Tender	11
Exclusions	12
Disclaimer	12
PHOTOS	13
Transom	13
Port View	13
Foredeck	13
Mid deck	13
Bow	14
Mast Step	14
Tender	14
Tender	14
Cockpit	15
Cockpit	15
Helm	15
Helm	15

Companion Way	16
Companion Way	16
Salon	16
Settee	16
Galley	16
Salon	16
Galley	17
Galley	17
Nav Center	17
Owner's Cabin	17
Owner's Cabin	17
Owner's Cabin	17
Owner's Cabin	18
v	18
Owner's Head	18
Owner's Head	18
Owner's Cabin	19
Owner's Shower	19
Starboard Aft Cabin	19
Starboard Aft Cabin	19
Starboard Head	20
Port Aft Cabin	20
Starboard Head	20
Water Maker Controls	20
Navigation equipment	21
AC/DC Panel	21
TV	21
Bose Sound System	21
Helm	21

---

Engine	21
GPS	22
Electric Winch	22
Jib Furler	22
Gooseneck	22
Radome	22
Mid Mast	22
Top Spreader	23
Mast Head	23
Factory supplied	23
Layout	23
CONTACTS	24
Contact details	24
Telephones	24
Office hours	24
Address	24

---

# SPECIFICATIONS

---

## Overview

---

Versatility and luxury best describes the Hunter 466 LIMITED EDITION. Whether your intention is to cross the bays or the oceans, the 466 LE is up to the task. Her sleek hull form is powered by an easy to handle B & R rig with a large main and small jib. With all lines led aft and a stainless arch to mount the traveler on, this rig is safe and a breeze to handle with just two aboard. The aft cockpit offers great visibility, plenty of storage and a custom console to house your electronics. The walk-through transom allows for easy boarding and fast line handling. The result is a durable yet beautiful craft that boasts features like vinylester resins, Kevlar® hull reinforcements, real lead keels and even through bolting on the hull to deck joint. Chainplates are bonded in, as are the bulkheads.

### Key Features:

Original Owner - Launched and Commissioned 2008

Generator - 6KW Northern Lights

Air Conditioning -

Watermaker - Spectra 380C

13' Whaler w/ 40 HP Mercury outboard

Bow Thruster - Imtra, SP55 7.25"

Electric Winch - Lewmar 48

In-Mast Furling Mainsail

Yanmar 75HP with only 978 Hours

---

## Basic Information

---

**Category:** Sloop

**Sub Category:** Cruising Sailboat

**Model Year:** 2006

**Year Built:** 2006

**Country:** United States

---

## Dimensions

---

**LOA:** 46' 0" (14.02m)

**Beam:** 14' 0" (4.27m)

**Min Draft:** 5' 6" (1.68m)

**Max Draft:** 6' 6" (1.98m)

**MFG Length:** 46' 1" (14.05m)

---

## Speed, Capacities and Weight

---

**Displacement:** 26000 Pounds

**Water Capacity:** 199.9782 Gallons

**Holding Tank:** 50.1926 Gallons

**Fuel Capacity:** 99.857 Gallons

---

## Accommodations

---

**Total Cabins:** 3

**Total Berths:** 3

**Total Heads:** 2

---

## Hull and Deck Information

---

**Hull Material:** Fiberglass

# DETAILED INFORMATION

## Key Features

Original Owner - Launched and Commissioned 2018

Generator - 6KW Northern Lights

Air Conditioning -

Watermaker - Spectra 380C

13' Whaler w/ 40 HP Mercury outboard

Bow Thruster - Imtra, SP55 7.25"

Electric Winch - Lewmar 48

In-Mast Furling Mainsail

Yanmar 75HP with only 978 Hours

## Specifications

Length Overall 46'1" .....14.05 m

Hull Length 44'3" .....13.49 m

Waterline Length 39'8" .....12.09 m

Beam 14'0" .....4.27 m

Draft (Bulb-Wing) 5'6" .....1.68 m

Draft (Deep Keel) 6'6" .....1.98 m

Displacement (Bulb-Wing) 26,000 lb .....11,794 kg

Ballast (Bulb-Wing) 9,500 lb .....4,309 kg

Mast Height 63'0" .....19.20 m

Sail Area (actual) 1,000 ft<sup>2</sup> .....92.90 m<sup>2</sup>

I 55'4" .....16.87 m

J 17'0" .....5.18 m

P 51'5" .....15.67 m

E 18'0" .....5.49 m

Headroom 6'6" .....1.98 m

Fuel Capacity 100 gal .....378 L

Water Capacity 200 gal .....757 L

Holding Tank Capacity 50 gal .....190 L

Water Heater 11 gal .....42 l

Aux Power (Yanmar) 75 HP .....56 KW

(Engine Oil Change System)

CE Classification A

## **RIGGING**

Furling system w/110% furling jib

Boom vang

Anodized B&R dbl. spreader mast head rig

Internal halyards led to cockpit

(2) Sets line stoppers

(1) Electric self-tailing halyard winch

(2) Two-speed self-tailing rigging winches

(2) Two-speed self-tailing jib sheet winches

(2) Winch handles Inboard adjustable jib tracks w/cars

Harken® adjustable mainsheet traveler

Windex® wind indicator

## **DECK/HULL**

Stainless steel arch w/mainsheet

Stern rail seats w/drink holders

Cabin windshield w/cover



Dual offset anchor rollers

Electric anchor windlass (Lewmar H3)

LPG tank storage for (2) 10lb. bottles

(2) Large transom lockers

(10) Opening deck hatches w/screens

(11) Opening ports w/screens

(7) Fixed hull ports

(2) Dorade type vents

Swim platform w/telescoping ladder

Hot & cold pressure transom shower

Dockside freshwater hook-up

Bow Thruster

44Lb Delta Anchor

## **COCKPIT**

Custom steering console w/ folding wheel, single lever engine control, wheel brake, lighted compass, large table leafs, pedestal guard, drink holders and courtesy light

Wraparound coamings

Hinging helmsman seat

(3) Cockpit lockers

Manual bilge pump

Line storage wells

## **FORWARD CABIN (MASTER)**

Queen-size island berth 7" thick innerspring mattress

Large hanging lockers (6) Dresser drawers under berth Custom curtains

6'6" headroom

## **FORWARD HEAD**

Separate split shower stall compartment

Vanity w/Corian® countertop

Holding tank w/macerator

## **SALON**

Convertible high-gloss dinette table, Island settee for dinette seating and extra bedding

Storage lockers on hull sides

6'6" headroom

Navigation station w/contoured seat and space for electronics

## **AFT CABINS**

Starboard aft stateroom w/double berth 7" thick innerspring mattress

Large hanging lockers and dresser drawers

Private entrance to aft head (starboard side)

## **AFT HEAD**

Full head w/stall shower

Vanity w/Corian® countertop

Holding tank w/macerator

## **GALLEY**

Corian® countertops

Built-in waste bin

Microwave

LPG 3 burner gimbaled stove w/oven

Hot/cold pressure water system

Top and front loading refrigerator w/separate freezer

Double stainless sinks

Storage cabinets and drawers

## **ELECTRICAL**

Dockside power w/cord

12 volt battery switch Inverter with battery charger (100 amp)

Electric automatic bilge pump

(2) shower sump pumps

Running lights w/steaming, deck, masthead and anchor lights

Cabin reading lights

Water Heater (11GL)

Shurflow washdown Pump

Tank gauges – fuel, water, & holding tank

(2) 8D House batteries w/boxes

Xantrex Link Pro Battery Monitor -

Xantrex start Battery Echo Charger

---

## Electronics

---

### All Electronics Installed 2015

Raymarine E125 Chart Plotter

Raymarine EV-1 Corepack Controller

Raymarine P70 Pilot Controller

Raymarine ACU200 Pilot Actuator

Raymarine i60 Analog Windmachine Display

Raymarine 18" 4KW Digital Radar Scanner

Raymarine Sirius Weather Receiver

Icom M424G VHF w/Remote Mic

---

## Tender

---

2002 Boston Whaler 130 Sport - 13'3" x 5'11"

2002 Mercury 40 HP Outboard

Bimini Cover

Electric bilge pump

## **Exclusions**

---

Owner's personal belongings.

## **Disclaimer**

---

The Company offers the details of this vessel or yacht in good faith but cannot guarantee or warrant the accuracy of this information nor warrant the condition of the vessel. A buyer should instruct his representatives, agents, or his surveyors, to investigate such details as the buyer desires validated. This vessel or yacht is offered subject to prior sale, price change, or withdrawal without notice.

# PHOTOS

**Transom**



**Port View**



**Foredeck**



**Mid deck**



**Mast Step**



**Bow**



**Tender**



**Tender**



**Cockpit**



**Cockpit**



**Helm**



**Helm**



**Companion Way**



**Companion Way**



**Salon**



**Settee**



**Salon**



**Galley**





**Galley**



**Galley**



**Nav Center**



**Owner's Cabin**



**Owner's Cabin**



**Owner's Cabin**



### Owner's Cabin

V



### Owner's Head



### Owner's Head



**Owner's Cabin**



**Owner's Shower**



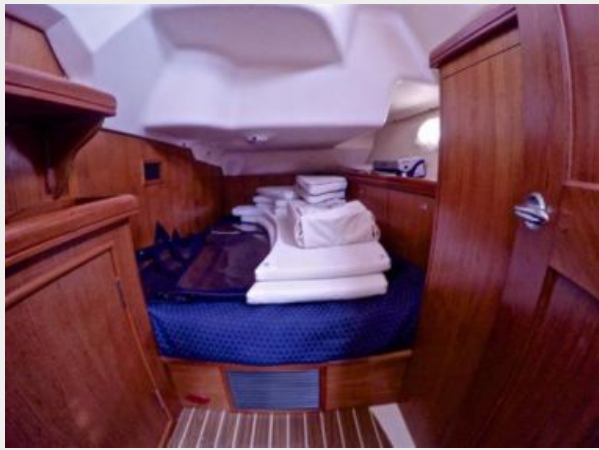
**Starboard Aft Cabin**



**Starboard Aft Cabin**



**Port Aft Cabin**



**Starboard Head**



**Starboard Head**



**Water Maker Controls**



### Navigation equipment



### AC/DC Panel



### Bose Sound System



### TV



### Engine



### Helm



**GPS**



**Electric Winch**



**Jib Furler**



**Gooseneck**



**Radome**



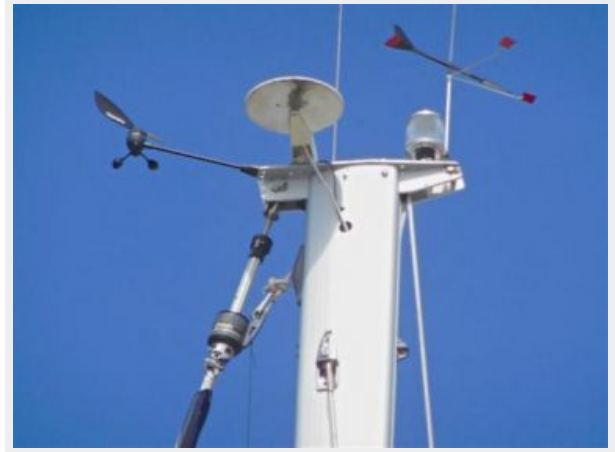
**Mid Mast**



**Top Spreader**



**Mast Head**



**Factory supplied**



**Layout**



# CONTACTS

---

Andrey Shestakov, leading yacht broker of the sales department of Shestakov Yacht Sales Inc. Shestakov Yacht Sales Inc., the official representative of the Miami/Fort Lauderdale FL headquarters.

## Contact details

---

Email: [andrey@shestakovyachtsales.com](mailto:andrey@shestakovyachtsales.com)

Web: [shestakovyachtsales.com/en/](http://shestakovyachtsales.com/en/)

## Telephones

---

USA: +1(954)274-4435

## Office hours

---

Monday – Saturday: **9:00 - 21:00** EDT

Sunday: **closed**

## Address

---



Harbour Towne Marina, 850 NE 3rd St,  
STE 213, Dania, FL 33004