

GLORY DAYS — VOYAGE YACHTS



Судостроитель: VOYAGE YACHTS

Год постройки: 1998

Модель: Катамаран

Цена: ЦЕНА ЯХТЫ ПО ЗАПРОСУ

Местонахождение: United States

Длина общая: 43' 0" (13.11m)

Ширина: 24' 6" (7.47m)

Макс. осадка: 3' 6" (1.07m)

Купить **Glory Days — VOYAGE YACHTS** а также выбрать подходящую вам яхту из нашего каталога яхт вам поможет опытный яхтенный брокер Андрей Шестаков. На сегодняшний день компания **Shestakov Yacht Sales Inc.** имеет большое количество яхт в собственном списке продаж, а также тесно сотрудничает со всеми крупными яхтенными производителями по всему миру.

Для того чтобы купить яхту **Glory Days — VOYAGE YACHTS** а также проконсультироваться по любому вопросу связанному с покупкой, продажей, чартером яхт позвоните по телефону **+7(918)465-66-44**.

ОГЛАВЛЕНИЕ

ОГЛАВЛЕНИЕ	2
ХАРАКТЕРИСТИКИ	3
Обзор	3
Основная информация	6
Размеры	6
Скорость, вместимость и масса	7
Размещение	7
Корпус и палуба	7
Информация о двигателе	7
ФОТОГРАФИИ	8
КОНТАКТЫ	14
Контактная информация	14
Телефоны	14
Время работы	14
Адрес	14

ХАРАКТЕРИСТИКИ

Обзор

The Voyage line of catamarans is renowned for their double digit speed, innovative design features, head-turning good looks, and build quality that is second to none. Designed by Alexander Simonis, this South African built cat was built for both performance and comfort. This never-chartered owner's version Voyage 430 is set up for extended live aboard and cruising on the hook. Self sufficient in every way, she will keep her crew happy, comfortable, and safe. The livability of this boat is amazing and storage room is exceptional. She is ready to take your family wherever they want to go.

GLORY DAYS bright and cheery interior is clean as a whistle and she shows really well, come see for yourself!

Vessel Walkthrough The bridgedeck cabin features a gourmet galley to port with amazing storage and counter space, and a breakfast bar with room for three stools! To starboard is the L-shaped settee with fold down dining table and the full size nav station aft. The starboard hull is the owner's suite featuring a queen berth cabin forward, office area amidships, and roomy head with walk-in shower aft. The port hull features queen berth cabins forward and aft, and a guest head amidships with separate shower. Panoramic windows, ample ventilation, recessed lighting, and low maintenance surfaces with just enough designer accent give the whole interior a very light and breezy feel. There is an additional pilot berth accessed from a hatch near the helm in the cockpit, for a total of seven berths.

The multi-level cockpit features the helm station with excellent visibility to port, cockpit dining for eight, and raised areas port and starboard for lounging or working the winches.

Specifications & Equipment

HULL DECK AND BULKHEADS Hand laid-up GRP construction using multi layers of Quadraxial glass roving, isophthalic and orthophthalic polyester resin and other highest grade material. Closed cell PVC foam core, vacuum bonded for stiffness, strength and minimal weight. Marine ply and balsa core on critical structure bulkheads for added strength and stiffness. Reinforced fitting areas for rudders, keels, mast, chain plates and deck fittings. Forward and aft water tight compartments with horizontal bulkheads. Skeg supported rudders. Low aspect keels, reinforced for beaching. Antifouling over epoxy based osmosis barrier,

DECK FITTINGS: STAINLESS STEEL, Grade 316 Bow pulpits with seats Pushpits on stern Stanchions and stanchion bases, extra high Stainless Steel Swim ladder Stainless Steel Grab rails on coach roof Double guard wires, 36" high Safety Netting for children and pets Rear teak Deck walkway Grill Mounting, Grill Chocks for mounting dinghy 8 x Aluminum mooring cleats

LIGHTING Navigation lights Spreader lights Forward Deck Lights Rear Arch LED Blue Lights LED Tricolor Light LED Anchor light Cockpit LED tricolor light (red, blue, white) Cockpit Utility

Light (red, white) Boom Light LED overhead cabin lighting

DECK EQUIPMENT 4 x Primary winches: Andersen 46ST 1x Primary winch: Andersen 46ST Electric Tracks, cars, jammers and blocks Lewmar traveler Sheet bags 3x Rod holders 2x 60' docklines 2x 40' docklines 2x 20' docklines 6x fenders

PLUMBING 2 x Automatic electric bilge pumps Rule 4x Whale Manual bilge pumps 2 x Calorifiers (hot water system) 40 liters, 110V, 12V, engine heater Self draining cockpit 2x Pressurized hot & cold deck shower, one on each transom Jabsco Manual Toilet (port hull) Vaccuflush Automatic toilet (Stbd hull) New Stainless Steel Kitchen faucet with built in extension 35GPH Engine Driven Water Maker (Village Marine NF 600) With pre filter, booster pump New Membranes January 2010 Fresh water wash-down system Surflo stainless steel accumulator tank 1 gal. 2x Black water systems 40 gal

HATCHES AND WINDOWS Hatches: 10 Port lights: 8 Tinted Acradite windows: 8 Aluminum framed sliding door GRP locker lids: 2 x foredeck, 6 x cockpit 5x Port Shades 8x Portlight Screens

SAFETY EQUIPMENT

406mhz EPIRB Flares, 8 x life jackets, 4x Safety Tethers, life sling Crew Overboard light Drogue/ Anchor 4x fire extinguishers 2x automatic engine room fire extinguishers Smoke / CO2 alarm Separate CO2 Alarm

RIGGING 7/8th fractional rig Aluminum mast, boom and cross beams Mast supported by double spreaders, intermediate and cap shrouds 2x Reefing Lines, with Luff Pennant VHF antenna masthead Mast Wired for POE WIFI network, Network Bridge included. Lazy jacks Double purchase main halyard with snatchblock Antal Bat car system for main sail Running back stays Telescopic Boom Derik Profurl furler for genoa Profurl furler for Screecher Fold up 7' bowsprit (not included in LOA)

SAILS Fully battened main, 2 reef points, (NEW 2012) Genoa 7.3 oz cross cut Dacron

175% RF drifter

Stackpack Sheets, halyards and control lines

COCKPIT Steering console including Stainless steel steering wheel Instrument console VHF radio with hailer and fog horn 6x Storage lockers (seats and floor) Helmsman's Seat Expandable table Teak grate in cockpit well Rigid Stainless steel framed Bimini with Spray dodger and with GRP Walkway

MAIN SALOON Standing height throughout over 6 feet Storage in seating modules Dining table (expandable with storage) with seating for 8 GRP molded finish modules Breakfast Bar Book Shelving Cabinets Shelving

GALLEY The largest galley we've seen on a cruising boat Large 4 Burner propane stove and

oven Stainless steel sink with cover Large recessed drip tray Pressurized hot and cold water Soap dispenser Front opening fridge - 12V Adler/Barbour Large Top Loading 12v Freezer (new air and water cooled system GRP molded finish cabinets and drawers Large working areas, expansive countertops Spice Shelving Corian work surfaces with stainless steel rails & fiddles Stainless steel waste chute with cover

FORWARD AND AFT CABINS 3x Queen size bunk with split mattresses with 4" memory foam GRP molded finish cabinet modules Ample shelf space and hanging locker Cabin and reading lights Cave lockers Laundry locker with leather seat covers Stainless steel grab and towel rails Office area in owner's hull with bookshelf, stool, desk, and mirror

HEAD COMPARTMENTS Wash basin and shower with pressurized hot and cold water Integrated shower grate and sump GRP molded finish cabinet modules Mirror Vanity cabinet Soap dispensers Stainless steel towel rails Large separate shower stall in owners head

NAVIGATION CENTER Large Recessed chart table with chart stowage Instrument console Electrical Panels Navigation seat Removable panels for access to electrical installation

INSTRUMENTATION Compass Raymarine RL80C Pathfinder Plus Color chartploter with charts for entire east coast and Bahamas Raymarine A70D Color Chartplotter/depth sounder. Raymarine tridata ST50 Raymarine ST6002+ Autopilot Whitlock Rotary Drive Raymarine Autohelm Pathfinder Radar 24nm Raymarine Autohelm ST60 Wind Instrument

COMMUNICATIONS Uniden um525 VHF Cockpit mounted, Wired for DSC includes hailer and fog horn Icom 150 watt SSB transceiver M-700 Pro 1, Unlocked for HAM Frequencies SSB Automatic antenna tuner Icom AT-130 STS Pactor II Modem with Pactor III License ICOM IC-M59 VHF radio (as spare) NAV Station Mounted

ELECTRIC 2 x Engine start batteries (12V) @ 85 AH

Ship house batteries (12V) - 675 total AH

800w Solar System (2008)

2 X Wind generators Outback MPPT controller with remote Mate monitor Rear mounted aluminum power arch Circuit breaker panel Cockpit mouthed fused switch panel for lighting Freedom HF Inverter/Charger 12V to 110V 2500W w/digital monitor 2 x 120 amps Ample alternators with Smart multi stage regulators Battery isolator switches House /starting battery coupler switch Battery Switch 1/2/both/off 7 x Interior 110V outlets: 3 in saloon, 1 in each cabin, 1 in Nav 110V shore cable socket

ENGINE EQUIPMENT Racor Primary Filter 2 x 27 Hp fresh water cooled Yanmar diesel engines (approx 3000 hrs) Port engine rebuilt 1/10

MaxProp folding props

Sound insulation 2 x Instrument panels Maxiprop Feathering Propellers High pressure fuel line

MOORING GEAR AND GROUND TACKLE 88lb Rocna Anchor (2008) with 200' 5/16' HT Chain (2009) FX23 Fortress Anchor with chain and 150' nylon line 25 Kg Delta anchor Additional 300' line Electric windlass Lofrans1500 Watt-10' Remote Control

Dinghy 10' AB Rib Hand Pump 15 HP Mercury outboard and 2.5 hp 4 stroke Mercury outboard

Seat with Storage Dock Lines Danforth Anchor LED NAV lights

ADDITIONAL ITEMS Sony 160watt AM/FM receiver and CDX-715 10 disk CD changer CD Stereo System in Master Suite Sanyo 26' Flat screen HDTV w/ Samsung Dvd player

Omnidirectional HDTV antenna

TV and radio Antenna Amplifier, digital converter 8x Cabin fans, Hello turbo fans Saloon Bow lockers - with lights Carpet for starboard and port hulls Gas Barbecue (large) Gas line w. quick coupler for Propane BBQ at stern dive platform 2x LPG Tanks 20lb aluminum 2x Bow storage Teak walkway between trampolines Teak dive platform at stern Emergency escape hatch with teak grid Mast Steps Non-Skid on Critical Deck Surfaces

Brokers Comments

This is a solid family cruising catamaran that really stands apart from the mostly ex-charter boats on the market in this size and price range. Her owners are experienced cruiser who know how to keep a boat in top condition.

Основная информация

Тип судна: Катамаран

Модельный год: 1998

Год постройки: 1998

Страна: United States

Размеры

Длина общая: 43' 0" (13.11m)

Ширина: 24' 6" (7.47m)

Макс. осадка: 3' 6" (1.07m)

Трапы: 63' 5" (19.33m)

Скорость, вместимость и масса

Вместимость воды: 53 Gallons

Объем топливного бака: 53 Gallons

Размещение

Всего кают: 3

Всего ком. состава: 2

Корпус и палуба

Материал корпуса: Fiberglass

Информация о двигателе

Производитель: Yanmar

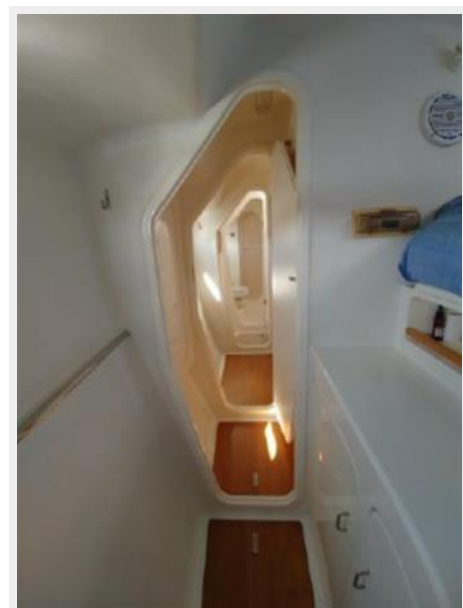
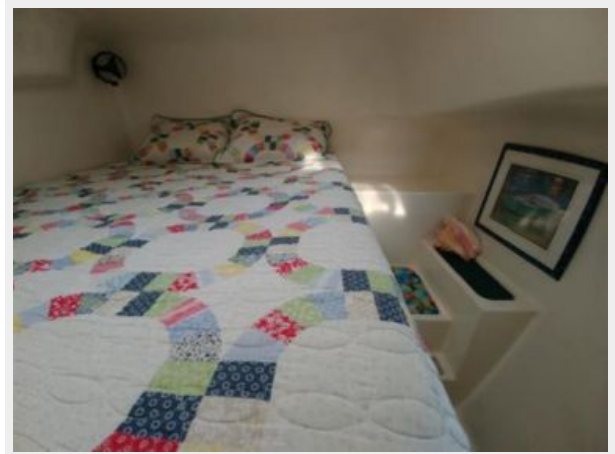
Модель: 3GM30

Тип двигателя: Inboard

Тип топлива: Diesel

ФОТОГРАФИИ













КОНТАКТЫ

Андрей Шестаков (Andrey Shestakov) – ведущий яхтенный брокер отдела продаж яхт и судов компании Shestakov Yacht Sales Inc. Официальный представитель Shestakov Yacht Sales Inc. для русскоговорящих клиентов в центральном офисе компании в Майами/Форт Лодердейл/Флорида/США.

Контактная информация

Email: andrey@shestakovyachtsales.com

Web: shestakovyachtsales.com

Телефоны

Краснодарский край: **+7(918)465-66-44**

США, Майами, Флорида: **+1(954)274-4435**

Время работы

Понедельник – Суббота: **9:00 - 21:00**
EDT

Воскресенье: **Закрето**

Адрес



Harbour Towne Marina, 850 NE 3rd St,
STE 213, Dania, FL 33004