

29FT 1964 COLUMBIA YACHT — COLUMBIA



Builder: COLUMBIA

Year Built: 1964

Model: Cruising Sailboat

Price: PRICE ON APPLICATION

Location: United States

LOA: 29' 0" (8.84m)

Beam: 8' 0" (2.44m)

Max Draft: 4' 0" (1.22m)

Our experienced yacht broker, Andrey Shestakov, will help you choose and buy a yacht that best suits your needs 29ft 1964 Columbia Yacht — COLUMBIA from our catalogue. Presently, at Shestakov Yacht Sales Inc., we have a wide variety of yachts available on our sale's list. We also work in close contact with all the big yacht manufacturers from all over the world.

If you would like to buy a yacht 29ft 1964 Columbia Yacht — COLUMBIA or would like help answering any questions concerning purchasing, selling or chartering a yacht, please call +1(954)274-4435

TABLE OF CONTENTS

TABLE OF CONTENTS	2
SPECIFICATIONS	3
Overview	3
Basic Information	3
Dimensions	3
Speed, Capacities and Weight	3
Accommodations	3
Hull and Deck Information	3
Engine Information	4
DETAILED INFORMATION	5
Additional Information	5
Exclusions	6
Disclaimer	6
PHOTOS	7
CONTACTS	11
Contact details	11
Telephones	11
Office hours	11
Address	11

SPECIFICATIONS

Overview

This classic beauty has been lovingly cared for by her owner for many years. Over the years she has been completely refitted. Awlgrip paint throughout, new Westerbeke engine, very good sail inventory, refrigeration installed, recent bottom paint and so much more. You won't find a better sailing boat with this much charm.

Basic Information

Category: Cruising Sailboat

Model Year: 1964

Year Built: 1964

Country: United States

Dimensions

LOA: 29' 0" (8.84m)

LWL: 22' 5" (6.83m)

Beam: 8' 0" (2.44m)

Max Draft: 4' 0" (1.22m)

Speed, Capacities and Weight

Displacement: 7400 Pounds

Water Capacity: 25 Gallons

Fuel Capacity: 15 Gallons

Accommodations

Total Berths: 4

Total Heads: 1

Hull and Deck Information

Hull Material: Fiberglass

Engine Information

Engines: 1

Manufacturer: westerbeke

Model: 3B3

Engine Type: Inboard

Fuel Type: Diesel

DETAILED INFORMATION

Additional Information

Decks and Deck Hardware

- Awlgrip paint and non skid
- Roller furling genoa
- Upgraded self-tailing winches
- Dodger
- Boom tent for shade while at anchor
- Spinnaker pole
- Whisker Pole
- Avon Red Crest Dinghy w/2 Stroke OB

Sails

- Mainsail
- Storm jib
- 150% North Genoa
- 2 Spinnakers

Electronics

- Radar
- Tri-Data - Wind, speed and depth
- Autopilot
- VHF

Interior

- 2 Single Berths
- 1 VBerth
- Marine head
- Dinette converts to bunk
- Refrigeration
- Perko 2 burner stove
- Lots of storage
- Tool locker

Additional Information

- Bottom painted 9/2017
- 3 Blade fixed prop

Exclusions

Owner's personal belongings.

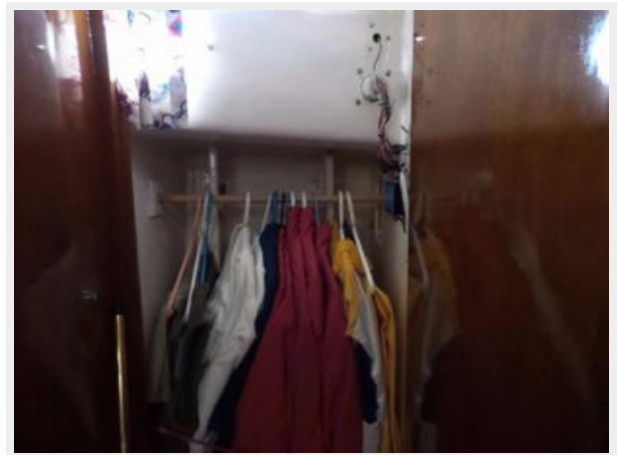
Disclaimer

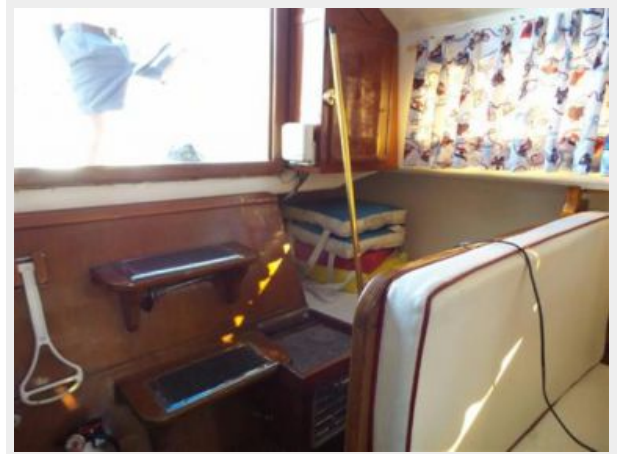
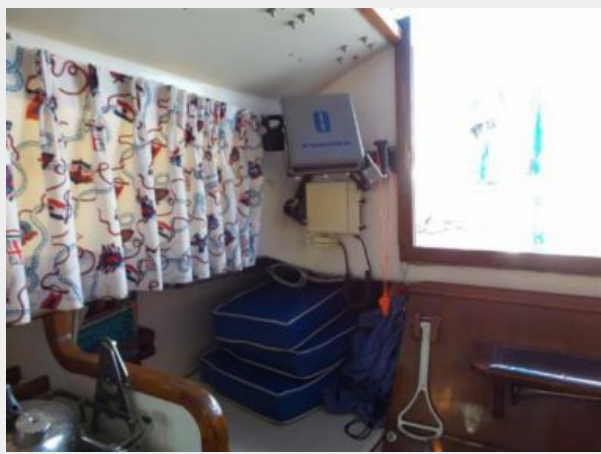
The Company offers the details of this vessel or yacht in good faith but cannot guarantee or warrant the accuracy of this information nor warrant the condition of the vessel. A buyer should instruct his representatives, agents, or his surveyors, to investigate such details as the buyer desires validated. This vessel or yacht is offered subject to prior sale, price change, or withdrawal without notice.

PHOTOS









CONTACTS

Andrey Shestakov, leading yacht broker of the sales department of Shestakov Yacht Sales Inc. Shestakov Yacht Sales Inc., the official representative of the Miami/Fort Lauderdale FL headquarters.

Contact details

Email: andrey@shestakovyachtsales.com

Web: shestakovyachtsales.com/en/

Telephones

USA: +1(954)274-4435

Office hours

Monday – Saturday: **9:00 - 21:00** EDT

Sunday: **closed**

Address



Harbour Towne Marina, 850 NE 3rd St,
STE 213, Dania, FL 33004