

# MAYA RAY — SOUTHERN WIND SHIPYARDS



**Builder:** SOUTHERN WIND SHIPYARDS

**Year Built:** 1999

**Model:** Cruising Sailboat

**Price:** PRICE ON APPLICATION

**Location:** Spain

**LOA:** 95' 0" (28.96m)

**Beam:** 22' 7" (6.88m)

**Min Draft:** 11' 7" (3.53m)

**Cruise Speed:** 9 Kts. (10 MPH)

**Max Speed:** 11 Kts. (13 MPH)

Our experienced yacht broker, Andrey Shestakov, will help you choose and buy a yacht that best suits your needs **MAYA RAY — SOUTHERN WIND SHIPYARDS** from our catalogue. Presently, at Shestakov Yacht Sales Inc., we have a wide variety of yachts available on our sale's list. We also work in close contact with all the big yacht manufacturers from all over the world.

If you would like to buy a yacht **MAYA RAY — SOUTHERN WIND SHIPYARDS** or would like help answering any questions concerning purchasing, selling or chartering a yacht, please call **+1(954)274-4435**

---

# TABLE OF CONTENTS

---

TABLE OF CONTENTS	2
SPECIFICATIONS	3
Overview	3
Basic Information	3
Dimensions	3
Speed, Capacities and Weight	4
Accommodations	4
Hull and Deck Information	4
Engine Information	4
DETAILED INFORMATION	5
GENERAL	5
Exclusions	7
Disclaimer	7
PHOTOS	9
CONTACTS	14
Contact details	14
Telephones	14
Office hours	14
Address	14

---

# SPECIFICATIONS

---

## Overview

---

Launched in 2000, MAYA RAY accommodates up to eight guests in four staterooms aft, and up to five crew in two cabins forward.

MAYA RAY is a cutter rigged sloop with roller furling on the genoa and staysail, and a conventional Park Avenue boom controlling the fully battened mainsail. Although she is relatively light, she is not overly “high tech”, (for instance all her winches are conventional hydraulic Lewmar self-tailers), as the owner’s requirement was for a fast, comfortable world cruiser that can be maintained by an experienced crew in remote cruising areas without the need to find “repair technicians”.

This goal has been admirably achieved. MAYA RAY was sailed from her builders in Cape Town, South Africa to the Caribbean in early 2000. She then cruised the Mediterranean, Caribbean, Pacific, and Indian Oceans, and stopped in Cape Town in 2005/2006 for a refit by her builder. Then a return to the Mediterranean again for 3 years followed by a trip to the USA, into the Pacific once again, onto Asia, back into the Pacific and a return to the USA in 2016. In this time she has had exceptional care by a knowledgeable and experienced owner. The entire rig has been replaced in 2002, all systems regularly serviced, and MAYA RAY is presented for sale in superb condition.

---

## Basic Information

---

**Category:** Cruising Sailboat

**Sub Category:** Performance Sailboat

**Model Year:** 1999

**Year Built:** 1999

**Country:** Spain

---

## Dimensions

---

**LOA:** 95' 0" (28.96m)

**Beam:** 22' 7" (6.88m)

**Min Draft:** 11' 7" (3.53m)

---

## Speed, Capacities and Weight

---

**Cruise Speed:** 9 Kts. (10 MPH)

**Max Speed:** 11 Kts. (13 MPH)

**Gross Tonnage:** 62 Pounds

**Water Capacity:** 528.344104 Gallons

**Fuel Capacity:** 1215.1914392 Gallons

---

## Accommodations

---

**Total Cabins:** 4

**Sleeps:** 8

**Captain Cabin:** True

**Crew Cabin:** 2

**Crew Sleeps:** 5

---

## Hull and Deck Information

---

**Hull Material:** Composite

**Deck Material:** Teak

**Hull Designer:** Farr Yacht Design

---

## Engine Information

---

**Engines:** 1

**Manufacturer:** MAN

**Model:** D-2855 LXE

**Engine Type:** Inboard

**Fuel Type:** Diesel

---

# DETAILED INFORMATION

---

## GENERAL

---

### Hull and Deck construction

**CONSTRUCTION** The hull is built in a composite material with a sandwich structure over a male mold. Unidirectional and triaxial glass and Kevlar with local reinforcements in carbon fiber, over a core of PVC closed cell foam, wetted with epoxy resin vacuum bagged and oven cured, filled, faired, and painted with Awlgrip Endeavour blue. - New paint 2015. The deck and superstructure is built in the same materials and method in a female mold, and painted (where not sheathed in teak) in Awlgrip 2000 Matterhorn White - New paint 2015. The keel upper section is a steel spacer foil with a lower bulb and wing section cast from 20.3 tons of lead. The rudder is in fiberglass with closed cell foam core with an elliptical profile. The lower part of the blade is sacrificial and replaceable. The rudder shaft is carbon fiber. Steering is by cable to a quadrant driven by a two meter diameter stainless steel spoked, varnished teak rim wheel on a Solimar double pedestal. **DECK DECK EQUIPMENT** Lewmar 4000 Hydraulic anchor windlass 180 lb. All weather decks are sheathed in seasoned teak laid to a king plank. All joints are 20:1 scarfs; there are no butt joints. All controls are lead to the aft steering cockpit. Multi stainless steel spoke 2m diameter steering wheel w/varnished teak rim. Huge lazarette with two 95cm x 95cm teak deck hatches. Lewmar Ocean Series low profile hatches. Varnished teak toe rail. SS stanchions with stainless steel wire lifelines. 100cm x 100cm foredeck teak hatch to sail locker. Recessed windlass and chain way to keep dirt off the deck. Canvas: Sailing dodger recessed into coaming. Sun lounge cushions on bridge deck. Center lounging cockpit with varnished teak table. Center Bimini recessed into cockpit cushions. Center cockpit dodger recessed into deckhouse.

### Engine and Mechanical

**MECHANICAL EQUIPMENT** The engine room, entered through a soundproof door from the lobby, has bright lighting, white surfaces, polished stainless steel, logically placed machinery, and an absence of clutter. Access to all sides of the 400hp MAN diesel, the two gensets, the air conditioning system, water-makers, pumps, and motors is easy. A proper workbench with full standing headroom is outboard to port.

Engine- MAN D-2866 LXE 400hp main engine – 14883 Hrs. (April 2018) Brunton's 4 Bladed Varifold 36" x 23" Generators – Northern Lights 25kW 50 hertz - 21080 Hrs. (April 2018) Northern Lights 12Kw 50 hertz – 17280 Hrs. (April 2018) Bow thruster - Max Power retractable 19kW (25hp)

### Electrical Systems

**ELECTRICAL EQUIPMENT** Frigomar chilled water system air conditioning w/two compressors 62000 BTU each and individual thermostatically controlled air handlers throughout the yacht – All new 2015/2016. Refrigeration: Compressors – New 2012 Frigomar 500 liter (18 cubic feet) upright refrigerator – galley Frigomar 200 liter (7 cubic feet) upright freezer – galley Frigomar 200

liter (7 cubic feet) chest freezer – galley sole Frigomar 300 liter (10 cubic feet) wine chiller – saloon Frigomar 85 liter (3 cubic feet) drinks fridge - pilothouse Techma Jet Flush fresh water 24 volts (3) Black water tanks 100 liters each (2) HEM 187 liters (50 gallons) per hour water-makers Batteries - All service and engine/generator start batteries replaced April 2017: House service: 2 banks of 24 volt 840 amp hours (1680 amp hours total) Sonnenschein Dry Fit Traction 2 volt cells. Engine start: 2 banks of 24 volt 200 amp hours Sonnenschein Dry Fit A200 12 volt cells. Communication: 1 bank 12 volt 320 amp hours Sonnenschein Dry Fit 12 volt cell. Battery banks can be paralleled via battery panel in any configuration. Battery Chargers: (3) Mastervolt 100 amp 24 volt (1) Mastervolt 50 amp 12 volt Mastervolt 24/3000 inverter feeding: Computer/scanner/printer Entertainment systems Selected 220 volt sockets Galley extractor fan

## Navigation and Mechanical Systems

Furuno 64 mile radar B&G T7 GPS Plotter – New 2018 B&G Hydra 5000 Systems w/7 MFDs, 2 x 2020, 2 analog displays – New 2015 B&G Autopilot Navigation computer system integrated to all systems with chart plotting software. Communication computer system Furuno SSB radio Icom VHF radio (cockpit remote handset, nav station base unit) Horizon VHF – Crew Mess Sailor Fleet Broadband 250 satellite phone Iridium Satellite Phone Netcomm 4G Router

## Interior and Accommodations

The entire interior of MAYA RAY is in foam cored blond teak paneling, grain matched to perfection. Cabin soles are teak and holly, and deck-head liners are white “ultra-suede”. UPPER SALOON A sliding glass panel door leads from the center cockpit to the upper saloon, which is fitted with a breakfast table with a C-shaped bench settee to port, raised to a suitable height to give a panoramic view. The impressive navigation station is to starboard, aft of which is the stairway to the owner and guest accommodations. MAIN SALOON The full beam saloon is open to the deckhouse only three steps above. The owner's preference for large, plump, comfortable seating is evident in the huge settee around the beautifully made but simply designed dining table to port. A coffee table to starboard is flanked by two smaller settees which conceal two stainless steel lined wine chillers with a capacity for ten cases. A television is against the aft bulkhead just to starboard of the steps to the upper saloon. MASTER STATEROOM All the way aft and accessed from a companionway in the upper saloon to the lower lobby, the handsome owner's stateroom has a centerline king sized berth, and all of the facilities that one would expect including a writing desk, hull ports, and a generous head and shower. GUEST STATEROOMS The two guest staterooms have queen sized berths, plenty of drawer and locker space, and roomy head and shower cubicles. The starboard cabin also has an upper Pullman berth cleverly disguised with false locker doors. To starboard of the steps in the main saloon is a small lobby leading to a small but useful single cabin with ensuite head and shower. This serves as a day head when the cabin is not in use, and the cabin, with an upper Pullman berth, can double as overflow crew accommodation on delivery trips, and for the owner's children's friends, or for a diving instructor. CREW QUARTERS The crew quarters forward have a comfortable crew mess with Miele clothes washer and dryer positioned beneath the benches. Opposite to port is the galley. Forward to port is a crew head and shower, forward of which is the captain's cabin with double berth, and with access, via a watertight door, to the forepeak sail locker. On the starboard

side is another crew shower and a long cabin with three single berths. The crew quarters are fitted out in the same style and finish as the owner's quarters aft. **GALLEY** The large and well-equipped galley, forward of the main saloon and opposite the crew mess, has enough preparation surfaces to feed up to 16 people at a time. Galley and laundry equipment includes: Alpes Inox propane gimballed stove and oven Miele electric two burner stove top Miele Oven – new 2013 Miele stainless steel dishwasher - new 2013 Frigomar upright refrigerator (galley) Frigomar upright freezer (galley) Frigomar chest freezer (galley sole) Frigomar drinks fridge (upper saloon) New Fridge & Freezer Compressors April 2012 Ten case capacity wine chiller (Saloon) Miele stainless steel clothes washer – new 2013 Miele stainless steel clothes dryer – new 2013 Nespresso Coffee machine Food Processor ENTERTAINMENT SYSTEMS Bang & Olafsen Stereo throughout Televisions in saloon & Owners Cabin

## Sails and Rigging

**RIGGING and SAILS** Mast: Sloop rig. Sparcraft light alloy extrusion with 4 “wing profile” sets of spreaders perpendicular to centerline. Mast and boom – New paint 2015 Light alloy “Park Avenue” boom Carbon fiber spinnaker pole - stows against forward face of mast Reckmann RF90-5 hydraulic genoa furler Reckmann RF90-4 hydraulic staysail furler OYS discontinuous stainless steel rod standing rigging Spectra double braid pre-stretched running rigging Rig was last out in 2015, was ultra-sounded and dye tested. Navtec hydraulics: Cockpit: four function unit – backstay, vang, main outhaul, Cunningham. Mast: genoa halyard tension, staysail halyard tension. Lewmar stainless steel 2 & 3 speed self-tailing winches Hydraulic power: (4) 3kW 24 volt pumps, sequentially initiated to allow four hydraulic power sailing functions to be carried out simultaneously. System is fully backed up by hydraulic pump driven by 25kW genset (normally used for bow thruster). Doyle Sails Spectra sails: Sails were new in 2010 Fully battened mainsail Furling genoa 120% Furling staysail MPS (nylon)

## Accessories

Tenders: NE44 Nova Marine 4.5m tender with 60Hp, cradles on foredeck. Zodiac fast roller 4.2m crew tender w/25hp outboard Safety Equipment: CO2 engine room fire extinguishing system Fire Hose 8 x Hand held fire extinguishers Fire escapes from all compartments (2) 10-man life rafts EPIRB SART Safety harnesses and lifejackets Other- CQR main anchor w/120m chain 120 lb. Danforth secondary anchor Dive compressor

## Exclusions

---

Owner's personal belongings.

## Disclaimer

---

The Company offers the details of this vessel or yacht in good faith but cannot guarantee or warrant the accuracy of this information nor warrant the condition of the vessel. A buyer should instruct his representatives, agents, or his surveyors, to investigate such details as the buyer

desires validated. This vessel or yacht is offered subject to prior sale, price change, or withdrawal without notice.

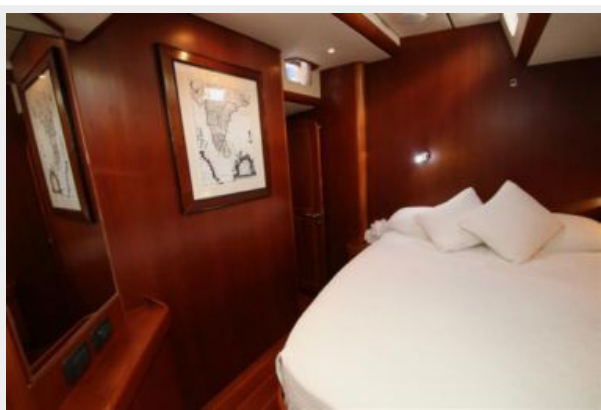


# PHOTOS















# CONTACTS

---

Andrey Shestakov, leading yacht broker of the sales department of Shestakov Yacht Sales Inc. Shestakov Yacht Sales Inc., the official representative of the Miami/Fort Lauderdale FL headquarters.

## Contact details

---

Email: [andrey@shestakovyachtsales.com](mailto:andrey@shestakovyachtsales.com)

Web: [shestakovyachtsales.com/en/](http://shestakovyachtsales.com/en/)

## Telephones

---

USA: +1(954)274-4435

## Office hours

---

Monday – Saturday: **9:00 - 21:00** EDT

Sunday: **closed**

## Address

---



Harbour Towne Marina, 850 NE 3rd St,  
STE 213, Dania, FL 33004