

NO NAME — CHEOY LEE



Судостроитель: CHEOY LEE

Год постройки: 2005

Модель: Моторная яхта

Цена: **ЦЕНА ЯХТЫ ПО ЗАПРОСУ**

Местонахождение: United States

Длина общая: 68' 0" (20.73m)

Ширина: 18' 11" (5.77m)

Мин. осадка: 5' 5" (1.65m)

Макс. осадка: 5' 5" (1.65m)

Крейс. скорость: 15 Kts. (17 MPH)

Макс. скорость: 19 Kts. (22 MPH)

Купить No Name — CHEOY LEE а также выбрать подходящую вам яхту из нашего каталога яхт вам поможет опытный яхтенный брокер Андрей Шестаков. На сегодняшний день компания Shestakov Yacht Sales Inc. имеет большое количество яхт в собственном списке продаж, а также тесно сотрудничает со всеми крупными яхтенными производителями по всему миру.

Для того чтобы купить яхту No Name — CHEOY LEE а также проконсультироваться по любому вопросу связанному с покупкой, продажей, чартером яхт позвоните по телефону **+7(918)465-66-44**.

ОГЛАВЛЕНИЕ

ОГЛАВЛЕНИЕ	2
ХАРАКТЕРИСТИКИ	4
Обзор	4
Основная информация	4
Размеры	4
Скорость, вместимость и масса	4
Размещение	5
Корпус и палуба	5
Информация о двигателе	5
ПОДРОБНОЕ ОПИСАНИЕ	6
Introduction	6
Aft Deck	7
Salon	7
Galley	8
Day Head	8
Pilothouse	9
Master Stateroom	9
Guest Twin Stateroom	10
VIP Forward Stateroom	11
Fly Bridge	12
Stern	13
Crew Quarters	13
Mechanical	14
Standard Equipment	15
Deck Equipment	15
Hull	16
Optional Equipment	16
Electrical Equipment	16

Upgrades	17
Comments	18
Exclusions	18
Исключения	19
Отказ от ответственности	19
ФОТОГРАФИИ	20
КОНТАКТЫ	30
Контактная информация	30
Телефоны	30
Время работы	30
Адрес	30

ХАРАКТЕРИСТИКИ

Обзор

A timeless classic, this 68 Cheoy Lee Motoryacht is sure to impress! Comfortable, 3 staterooms with ensuite plus crew quarters with head. Convenient day head on deck. Desirable CAT power with low hours, updated electronics, stabilized for comfortable, dry ride. Water maker, under water lights. Fitted with many features normally found in much larger yachts. Her proud Owner has maintained her with an open checkbook and her appearance reflects a much younger yacht!

Easy to see - call today!

Основная информация

Тип судна: Моторная яхта

Модельный год: 2005

Год постройки: 2005

Страна: United States

Открытая палуба мостика: Да

Размеры

Длина общая: 68' 0" (20.73m)

Длина по ватерлинии: 61' 9" (18.82m)

Ширина: 18' 11" (5.77m)

Мин. осадка: 5' 5" (1.65m)

Макс. осадка: 5' 5" (1.65m)

Скорость, вместимость и масса

Крейс. скорость: 15 Kts. (17 MPH)

Макс. скорость: 19 Kts. (22 MPH)

Водоизмещение: 101000 Pounds

Вместимость воды: 430 Gallons

Объем топливного бака: 1600 Gallons

Размещение

Всего кают: 4

Всего ком. состава: 5

Корпус и палуба

Материал корпуса: Fiberglass

Информация о двигателе

Двигатели: 2

Производитель: Caterpillar

Модель: C18

Тип двигателя: Inboard

Тип топлива: Diesel

ПОДРОБНОЕ ОПИСАНИЕ

Introduction

his 68 Cheoy Lee is the perfect Motor Yacht for an Owner/Operator, a live-aboard (extended cruising) couple or a Captained vessel. The semi-displacement Tom Fexus hull design is seaworthy and handles ideally at fuel-saving "hull speed", yet provides the get-up-and-go capability to cut through rough seas safely and quickly when needed. Powered with reliable CAT C18s, at 1000 horsepower each, a cruising speed of 10 knots burns only 6.5 gallons per hour/ per side (wind and sea conditions dependent).

Resin infusion technology is used to mold all major components of this yacht. Designed to DNV High Speed Craft classification standards, the result is a lightweight but exceptionally strong vessel.

Cheoy Lee's level of commitment to excellence does not stop at performance. Safety, space utilization, minimized noise and vibration, reliability, comfort, maintainability and overall quality aspects have all been addressed with an equal obsession. The gourmet galley features a pantry and full-size appliances. Sleeping accommodations include full-beam Master, VIP and twin staterooms – each with individual full heads. Additionally, the aft crew quarter provides comfort for two and includes a full head as well. Crew is accessed from the swim platform. All overhead lighting in the interior, exterior and deck lights have been upgraded to cost-saving, efficient and low-temperature LED's. There is a convenient salon powder room (day head), upper- and lower-helms with complete electronics suites, flybridge hardtop, teak adjustable flybridge sun pad, three locations to enjoy meals (aft deck, flybridge and inside near the lower helm station) and an aft deck that can be enclosed with Eisenglass (panels currently stored in water room below twin stateroom).

This motor yacht has been upgraded and improved recently and includes an impressive listing of complimentary equipment and spare parts that are listed in detail below. Key features include:

- On-deck Day Head so guests did not have to enter a stateroom to find a bathroom facility
- Light and open interior with Nautical design features
- Remote engine control stations (aft deck and starboard side plug-in controls) that include bow and stern thruster controls
- Water maker to ensure ample fresh water when at anchor for extended periods (800 gpd)
- Upper and lower helm stations + remotes aft deck
- Refrigerator, sink and grill on flybridge to accommodate entertaining
- Stable Hard top on open flybridge to eliminate noise associated with Bimini-style tops
- Safe gunwales on side decks with solid walls (at least 12" tall) below a full-length railing for safety
- Rubrail overhangs to reduce bad weather effects during docking when throwing lines
- Inside access to the flybridge for easy access from salon to flybridge (plus aft deck ladder)
- CAT power for both the mains and the generators ensuring service capability in far-away

ports

- Galley up for ease of serving and to enhance the open design of the interior
- Full view of aft deck from inside helm for safety & decking purposes
- Starboard side deck watertight door
- Full headroom in engine room for ease of maintenance, most all machinery easily accessed

This yacht includes the quality and features that are normally found in larger yachts. The Cheoy Lee 68' M/Y is the smallest of the Bravo Series ever produced, but includes and incorporates many of the features found in much larger vessels, i.e. railing construction and diameter, cleat sizes, hawse hole sizes and many other areas of the design and construction.

Aft Deck

- Ladder to flybridge
- Adhesion style teak deck
- Built-in seating with canvas covered flow-thru closed cell foam cushions and storage under
- Fiberglass fixed pedestal mounted table with Avonite table top
- One pair of recessed speakers with volume control
- Integral steps to transom sport deck with stainless steel handrail
- Wash down spigot under settee cushion stbd side
- Storage cabinet with refrigerator and Avonite top with power supply and water supply
- Storage locker for cleaning supplies
- Overhead L.E.D. lights
- Port and starboard boarding gates with locking door
- Remote plug-in for Mathers engine control A/V Specs Volume control, Niles WVC-2-FG00555-W Speakers(2), Poly Planar 6.5" 2 Way MA6500
- 4 teak chairs with cushions and bench seating behind table

Salon

A/V Specs

- 43" L.E.D. Vizio Smart TV, Oct 2015
- Onkyo dual channel receiver, Oct 2015
- Sony DVD player, Oct. 2015
- Direct TV receiver
- Sub-woofer, Sony SA-WM20
- Speakers(5), Speakers Craft 5" round 5.5R, surround sound
- Entertainment cabinet with electronics and stereo surround sound system
- Pop-up TV lift, Lift-Tech IR/RF
- Storage under two chairs and couch

- Linen/wood coffee table with reversible tray top & two ottomans
- Fabrica high quality carpet from builder's standard selection, 2013
- Soffit and floor lighting
- 110vAC duplex outlets (5) in salon
- Stainless steel and glass sliding door to aft deck
- Valances on windows painted to match veneer
- Hunter Douglas/Luxaflex Vertiglide shade for sliding salon door
- Breakfast bar to galley
- Smoke detector
- 110vAC outlets (2 single; 1 duplex)
- Telephone jack
- 2 bar stools with matching cushions

Galley

- Kitchen Aide SST range/oven unit
- GE Stainless steel microwave oven
- GE Stainless steel 22 cu. Ft. side by-side refrigerator/freezer with ice and water dispenser (door locks added)
- GE Stainless steel dishwasher
- Franke stainless steel sink
- Franke faucet with removable sprayer handle
- Raised dinette, U-shaped seating with storage under seating and pedestal mounted dining table with Avonite top
- Overhead L.E.D. light above dinette settee
- Chart storage under settee near helm chair
- Cherry veneer cabinetry
- Full height pantry with wooden door
- Amtico plank flooring
- Solid Surface counter tops and backsplash
- Smoke detector
- Under cabinet lights
- 110vAC outlets (2 duplex GFI protected in galley; 2 duplex outlets in dinette) Breakfast bar with overhead cabinet
- Telephone jack (1 in galley, 1 in dinette)
- Storage under counter space forward of sink

Day Head

- Kohler Pedistal Sink
- Headhunter 24vDC electric head, Neo Classic bowl (fresh water flush)
- Mirror, sides and ceiling

- Overhead lighting
- Exhaust fan
- Large storage cabinet under stairs
- 110vAC outlets, GFI protected
- L.E.D. lighting

Pilothouse

- Garmin #7612XSV GPS-map, sounder, Sirius weather, navigation, (installed July 2015) upper and lower stations
- Garmin Airmar transducer, (installed July 2015)
- Furuno radar, navigation, sounder
- Amtico vinyl plank flooring
- Caterpillar standard instrumentation package
- Majilite wrapped console hood
- Instrument panel and flat console surface in black laminate
- Tracy helm seat (1)
- Remote control for anchor windlass
- Ritchie 5" compass
- ACR spotlight
- Stainless steel steering wheel
- Simrad AP26 Autopilot
- ZF electronic engine controls
- NAIAD stabilizer controls
- Standard Horizon VHF radio
- Rudder indicator
- Day tank fuel gauge
- Bow/stern thrusters
- LCD touch screen control/alarm monitoring system (refer to Electrical System)
- 110vAC duplex outlets (2)
- Hepworth intermittent windshield wipers with fresh water wash system
- Staircases to flybridge and to lower deck staterooms
- Majilite wrapped window mullions
- Electrical sub panel

Master Stateroom

- King berth with storage drawers under
- L.E.D. lights throughout
- Shoji screens over portlights
- Port lights with duette shade (2)
- Over the berth veneered soffit with indirect lighting on dimmer control

- Two maple night tables
- Maple entertainment cabinet with TV/VCR/DVD and CD stereo system
- Five speakers with surround sound
- Smoke detector
- Emergency escape hatch to engine room and aft swim platform
- Walk-in cedar lined closet with automatic light and mirror on door
- Wooden vanity unit with mirror and lights
- Storage cabinets
- Mirror over headboard
- Soffit and floor lights
- Berth reading lights
- Fabrica high quality carpet from builder's standard selection
- HEADHUNTER 24vDC electric head, Neo Classic (fresh water flush)
- Large shower with access door to engine room
- Frameless glass shower enclosure and door
- Hand painted wall picture, Nantucket Lighthouse
- Ambassador chrome gold faucet and bath accessories
- AVONITE counter top and backsplash with under mount sink and wooden storage cabinet underneath
- AMTICO vinyl flooring in head
- Mirrored medicine cabinet
- Love seat/couch with under seat storage
- Exhaust blower
- 110vAC duplex outlets (3) in stateroom, (1) GFI type in head
- Washer/dryer (24" stacked unit in foyer)

A/V Specs

- 43" L.E.D. Vizio Smart television, Oct 2015
- Sony DVD/VHS, Sony SSR receiver
- Sony STRDE-995/S Sub woofer, Sony SA-WM20 Speakers (5), Speaker Craft 5" Round 5.5R
- Direct TV Receiver

Guest Twin Stateroom

- Twin berths with storage drawers
- TV and CD stereo system
- Fabrica high quality carpet from builder's selection
- One pair of speakers
- Smoke detector
- Mirrored wardrobe with cedar lining on back surface and automatic light
- Soffit and floor lights

- Reading lights
- Port light with duette shade
- Fiberglass stall shower with frameless glass enclosure and door
- Mirrored medicine cabinet
- Ambassador chrome gold faucet and bath accessories
- AVONITE counter top and backsplash with under mount sink and wooden storage cabinet underneath
- "A-look" Mitsubishi overhead mirror in head
- Exhaust blower
- 110vAC outlet (1) duplex in stateroom, (1) GFI type in head
- HEADHUNTER 24vDC electric head, Neo Classic bowl (fresh water flush)
- Amtico vinyl flooring in head
- Water maker, hot water heater, and fresh water pump hold hatch located in floor

A/V Specs

- 24" L.E.D. Vizio Smart television, Oct 2015
- Sony CDXL410M Speakers(2), Speakers Craft 5.2" Round Wall brackets, Peerless LCW100SP

VIP Forward Stateroom

- Cherry wood base queen berth with storage drawers under
- Shoji screens
- TV and CD stereo system
- One pair of speakers
- Telephone jack
- Smoke detector
- Mirrored wardrobe with cedar lining on back surface and automatic light
- Soffit and floor lights
- Reading lights
- HEADHUNTER 24vDC electric head, Neo Classic bowl (fresh water flush)
- Fiberglass stall shower with frameless glass enclosure and door
- Ambassador chrome gold faucet and bath accessories
- AVONITE counter top and backsplash with under mount sink and wooden storage cabinet underneath
- Mirrored medicine cabinet
- Exhaust blower
- Amtico vinyl flooring in head
- 110vAC outlet (2) duplex in stateroom, (1) GFI type in head
- Escape hatch to foredeck with Hunter Douglas/Luxafles blind
- Guest room foyer with high quality carpet, wooden storage cabinets and Majilite wrapped headliner and bulkheads

A/V Specs

- 24" L.E.D. Vizio Smart television, Oct 2015
- Sony AM/FM CD player
- Sony CDXL410M Speakers(2), Speakers Craft 5.2" Round Wall brackets, Peerless LCW100SP

Fly Bridge

- Electric hydraulic 1500 lb davit, 110v AC with standpipe and manual rotation
- ZF electronic engine controls
- Hynautic hydraulic power steering
- Caterpillar standard instrumentation package
- Fiberglass instrument and electronic console
- Ritchie 5" compass
- Stainless steel steering wheel
- Stainless steel rails
- Fiberglass radar arch with integral hardtop and lighting
- TRACY helm seats (2)
- Fiberglass seats with storage under and flow-thru foam cushions
- Non-skid deck
- Flag staff for courtesy and foreign flags on electronics tower
- Hatch and stairs to aft deck
- Fiberglass locker with sink, hot and cold water faucet, fresh water wash down hose bib, U-LINE model 29 frost free icemaker/combo refrigerator
- 110vAC outlets (2), GFI type
- Stainless steel and glass sliding hatch to pilothouse
- ACR 100 quartz halogen search light with remote on flybridge console
- Simrad AD26 autopilot
- Cat monitors
- ACR spotlight
- Furuno radar, navigation, sounder
- Garmin #7612XSV GPS-map, sounder, Sirius weather, navigation, (installed July 2015)
- Standard Horizon VHF radio, AIS and GPS, installed April 2014
- (2) Shakespeare 23' Galaxy 9db VHF Antennas, April 2014
- NavNet C-Mapnt
- Rudder indicator
- Fuel gauge for day tank
- 2010 Avon Center Console Rib with Yamaha 50 HP, VHF, Garmin electronics
- 3 Chaise lounges, teak with cushions
- Fold down radar mast (Air draft 20'6" when down)
- Jenn-Aire dual electric BBQ grill with cover and safety shut-off switch embedded in cover

Stern

- Swim Platform
- Adhesion style teak deck
- L.E.D. deck lights
- Swim ladder/boarding ladder
- Stainless steel hoop rails
- Fresh water type shower (hot and cold) located inside pantograph door
- 100 amp single phase shore power on cablemaster
- Locker for shore power, TV and telephone connections
- 2 x 8" stainless steel fold up cleats port and starboard
- 8" through bolted centerline bollard
- Central fuel filling station, day and aft tanks
- Port and starboard fuel filling on starboard gunwale
- Stainless rails port and starboard for swim deck boarding
- Water fill station on starboard gunwale

Crew Quarters

- Upper and lower berths (1 each)
- Reading lights (2)
- Television and stereo system
- One pair of speakers in overhead
- Smoke detector
- Hanging locker
- Chest with drawers
- L.E.D. ceiling lights with control switch
- Telephone jack
- High quality Amtico vinyl flooring
- Galley Maid electric head (fresh water flush)
- Stall shower
- Avonite counter top with under mount sink
- Faucets and bath accessories
- Exhaust blower
- 110vAC duplex outlets (1 duplex in cabin and 1 duplex GFI protected in head)

A/V Specs

- 13" LCD TV
- Sony AM/FM CD player
- Sony CDXL410M Speakers(2), Speakers Craft 5.2" Round

Mechanical

- Twin fresh water cooled diesel engines, CATERPILLAR C-18 (1000 hp)
- Local mounted start/stop instrument panels for main engines
- 7.5 sq. ft. stabilizers fins, new power cylinders installed March 2016
- Underwater main engine exhausts with bypass and fiberglass mufflers
- CENTEK generator muffler with air/water separator and hull side exhaust
- 2 NORTHERN LIGHTS generators with sound shield PT1692/STRD 120/240v
- AMERICAN 24vDC electric bow thruster, 12" dual-prop
- VETUS 24vDC stern thruster w/independent plus battery bank, charger and breakers with three stations
- Direct expansion air conditioning (except engine room) with microprocessor digital controls in each room
- Engine room ventilation via air/water separators on hull side
- Manually and automatically actuated CO2 fire extinguishing system with automatic dampers to shut down ventilation to engine room
- Power hydraulic steering system
- 110vAC lube oil change system for main engines, gears and generators
- Engine driven emergency bilge pumping system for engine room bilges
- Vacuum gauges on RACOR filters (4 total)
- 30 gallon water heaters (quick recovery type)
- Water pump and accumulator tank for fresh water pressure system
- Water filter (sediment and charcoal) unit for whole system
- Sink with fresh water hose bib
- Automatic sump pumps
- Automatic bilge pump for each bilge space
- Fuel management system consisting of fuel shut-off valves and fuel transfer pump with meter system
- HART Tank Tender fuel and water tank gauges (pneumatic pump type)
- Black and gray water tank with gauges on tank tender
- GROCO bronze raw water strainers for all engine and sea water pump intakes
- Seacocks on all through hull fittings below the waterline
- Fiberglass battery boxes
- Battery voltmeter
- Engineered vibration and noise attenuation system
- Air compressor for air horn and power steering charge
- Vibration mounts for main engine, generators, head pumps/motors, air conditioning compressors and cooling pumps
- Drip trays under engines
- Fluorescent lights (4)
- 24vDC emergency lights
- VDO Fuel gauges pilothouse and bridge for daytank in addition to tank tenders in engine room
- 110vAC duplex outlets (2 GFI type)

- Watertight entrance door from aft swim step
- Watertight Emergency escape hatch from engine room to master stateroom
- Fiberglass diamond pattern flooring
- 800 Gal per day SK water maker with filtered flush option
- Six-slot fishing rod/reel storage brackets

Standard Equipment

- Hull, deck and superstructure of Airex/Divinycell/Airlight cored fiberglass
- Cored fiberglass bulkheads and cabin soles
- Resin infused bi-axial and multi-axial E-glass laminates
- Double bottom integral fiberglass fuel, fresh water, gray water and black water tanks
- Fiberglass rub rail with stainless steel capping
- Off white Awlcraft 2000 exterior finish with black boot stripe
- Awlcraft 2000 non-skid exterior decks
- Tinted (except pilothouse) and tempered glass windows utilizing high strength adhesion style window system

Deck Equipment

- Hardware chrome on brass, 316 stainless steel or anodized/painted aluminum
- Vertical anchor windlass, MAXWELL 24vDC, 3500 lb. 3/8" chain cathead and rope capstan, deck pipe and chain stopper.
- IS 88 lb DELTA anchor
- 200 ft. high test galvanized chain
- Fresh water anchor wash spigot
- Electric twin trumpet air horn
- Foredeck lockers
- Stainless steel bollards (5)
- Hawse holes (2)
- Stainless steel fairleads
- Stainless steel rails (1.25")
- Stainless steel burgee staff on bow
- Stainless steel framed glass ventilating foredeck hatch
- Stainless steel framed glass sliding hatch door to flybridge
- Navigation lights
- Stainless steel flag staff, aft deck
- Step plates at boarding gates
- Scuppers draining to boot top
- Courtesy lights
- Four boarding gates, (2) port and (2) starboard
- Vertical and Tide Rider steps for boarding

Hull

- Stainless steel rudder blades
- 5 bladed props (upgraded from original)
- Spare 4 blade props located under sunpad on flybridge
- Cutlass rubber stern and rudder bearings
- PYI shaft seals for propeller shafts and rudder stocks

Optional Equipment

- (3) High intensity Abyss underwater lights under swim platform
- Custom wood veneers, inlays, accent and bookmatching
- Fore deck sun pad cushions and cover
- Watermaker
- Teak on aft deck
- Lube oil change system (110vAC)
- 100 amp to 50 amp shore service adaptor cord
- Telephone/intercom system
- Aft crew quarters with Galley Maid 24vDC electric head (fresh water flush) and shower
- Mathers electronic control with one remote plug-in station in place of Hynautic controls
- Flybridge JENNAIRE barbecue grill with safety switch
- RITCHIE 5" compass with light, dimmer and cover
- Generator remote start/stop at pilothouse
- Soft goods décor such as drapes, valance boards, Roman shades, headboards and bed treatments
- Covers for flybridge helm and settee, (2) flybridge helm chairs and sun pad chaise
- Optional powering package: Caterpillar C-18, 1000 bhp

Electrical Equipment

- 220/110vAC, 60 Hz and 24/12vDC electrical panels
- ACR 100 searchlight with control at upper and lower helm stations
- DC L.E.D. lighting throughout
- Soffit, reading and floor rope lighting to be 24vDC
- Automatic wardrobe lights
- Two banks of 24vDC 210 amp-hour batteries for engine and generator start and ship service
- Battery parallel system at both helm stations
- Emergency flashlights in each stateroom with automatic recharge
- 24vDC, 60 amp battery charger
- 50 amp VANNER 12vDC equalizer with 12vDC 120 amp-hour battery and 5 (each) spare 24/12vDC circuit breakers in sub-panel for electronics

- (2) CCTV video cameras, aft deck and engine room, viewed on Garmin electronics
- GLENDINNING Cablemaster shore power cable retrieval, for 230vAC 100 amp with 100 ft. cable.
- Copper bonding system
- 25kVA isolation transformers for shore power system
- Dynaplate and strap to pilothouse and flybridge ground terminal boards
- Voltmeters and ammeters for supply circuits
- Generating set/shore power selector switches and shore power polarity indicator
- 24vDC, 60 amp-hour battery bank for windlass and bow thruster service
- KVH SAT TV dome
- Alarm system monitor panel audible and visual signals displayed on Programmable Logic Controller (PLC) located in pilothouse for generator low oil pressure, generator high temperature, high bilge level, and smoke detectors (engine room, staterooms, galley, and salon).
- Security alarm sensors on all doors and hatches.
- Smart Y splitter

Upgrades

Spare Parts and Vessel Complements Included

- Emergency anchor, Fortress FX125 with rode, 10' chain + 200' rope rode with all necessary hardware (spare rode stored under steps from swim platform to engine room), all new and unused
- Revere Offshore Commander 2.0 Liferaft, 6 person Valise (located under fly bridge helm) with canopy, foam insulated floor, sea anchor and a complete suite of survival accessories, November 2015
- Ditch kit with flares, rain gear and other survival gear, located in hold at top of fly bridge stairs
- EPIRB, mounted on flybridge, November 2015
- 2010 AVON RIB tender with Yamaha 4-stroke 50 HP motor, VHF radio, Garmin electronics, sounder, anchor, paddles, PFD's, air pump, battery switch, purchased June 2016
- 5-blade Nibral props, 34" diameter, 42.2" pitch (original was 43"), 3" Marine taper
- Prop Speed anti-corrosion, anti-barnacle (applied Oct. 2015)
- 100% new water lines, all fresh water and salt water hoses, April 2014
- Complete set of batteries, 11 new gel-cell marine batteries, April 2014
- Two fold-up bicycles stored in engine room, serviced July 2015
- Three Abyss underwater LED lights, March 2016
- Rogue Wave WiFi amplifier, July 2015
- Two Garmin #7612XSV navigation, sounder and Sirius weather electronics, (1) inside helm and (1) flybridge helm, July 2015
- New TVs in salon, master, VIP and twin staterooms, Oct. 2015
- Engine oil changed 15 hours ago on both mains and both generators, including all filters

and engine zincs

- Hull and shaft zincs new June 2016
- Complete bottom clean and paint, Oct. 2015
- Waterline clean and paint, June 2016
- All four fuel tanks full, 1500+ gallons diesel, June 2016
- Shakespeare 23' Galaxy 9 dB antennas, hinged at base for fold-down bridge clearance, April 2014
- Standard Horizon VHF with AIS and GPS, Class D DSC, 30 W, April 2014
- Garmin AirMar B744VL-8G-TH transducer, Nov. 2015
- Watermaker membranes, March 2014
- Shore water purification system, particulate pre-filter in housing, large Wet Spot filter with 100' white hose, stored in engine room
- New fire extinguishers, April 2015
- New life jackets USCG Type 1 PFD's, April 2015
- Complete set of mooring lines and fenders
- Custom fender hooks (6)
- Various electrical shore power hook-up connection options, located under seat cushions on aft deck, including splitter box (2) 50A to single 100A
- Two spare props for main engines on fly bridge, lowered using davit
- Prop removal tool set located in engine room
- Spare starter located in engine room, STBD side, under floor plate
- Spare pumps and impellers
- Assortment of all water filters (charcoal, 20 micron, 5 micron, refrigerator water main and secondary filters)
- Racors for fuel system
- Replacement bulbs for lighting
- Hand tools, hose clamps, sealants, engine oil, hydraulic fluid, lubricants, gas and diesel cans, etc.
- Cleaning materials and wax, electric buffer wheel with pads and lamb's wool buffers
- Various fins / masks / snorkels / noodles, etc.

Comments

Owners have made every effort to insure next Owner can climb aboard and have close to carefree usage of vessel. Owner's change in plans at home facilitates sale of boat currently. She's a great vessel!

Exclusions

Owners personal belongings, charts, binoculars. Full list to be provided to Buyer upon acceptance of offer.

Исключения

При продаже яхты исключаются личные вещи владельца.

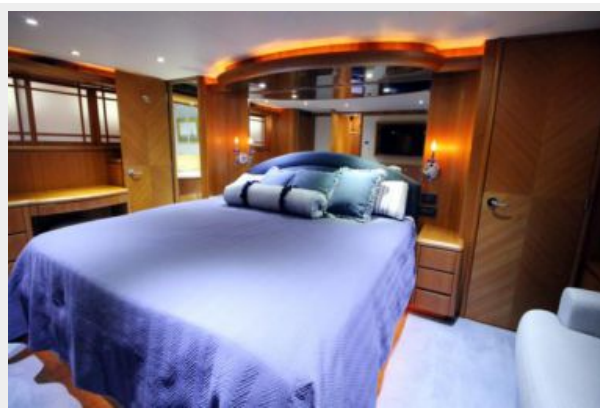
Отказ от ответственности

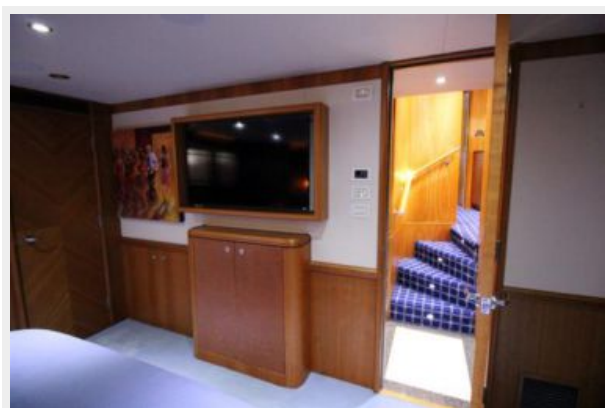
Компания предоставляет описание судна или яхты добросовестно, но не может гарантировать точность этой информации, а также не ручается за техническое состояние. Покупатель должен проинструктировать своих агентов или оценщиков исследовать представленную информацию более подробно, по собственному желанию. Продажа судна или яхты, изменение цены или снятие с продажи будет происходить без предварительного уведомления.

ФОТОГРАФИИ

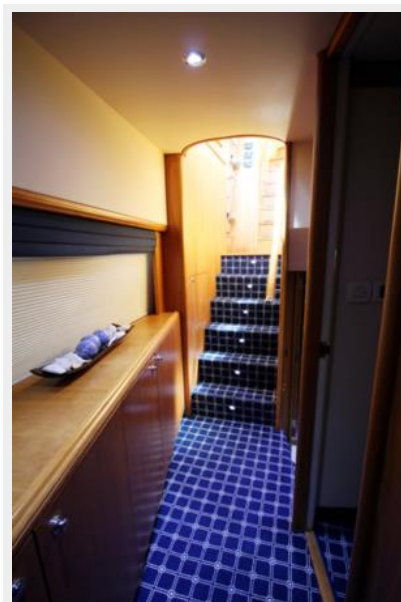
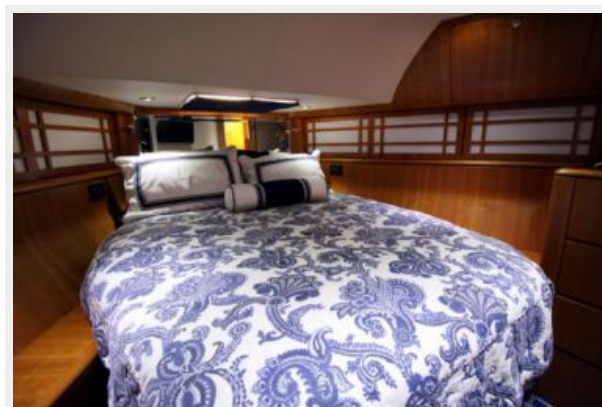


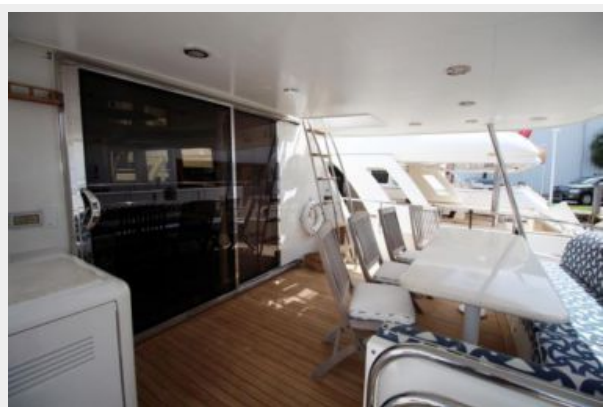


















КОНТАКТЫ

Андрей Шестаков (Andrey Shestakov) – ведущий яхтенный брокер отдела продаж яхт и судов компании Shestakov Yacht Sales Inc. Официальный представитель Shestakov Yacht Sales Inc. для русскоговорящих клиентов в центральном офисе компании в Майами/Форт Лодердейл/Флорида/США.

Контактная информация

Email: andrey@shestakovyachtsales.com

Web: shestakovyachtsales.com

Телефоны

Краснодарский край: **+7(918)465-66-44**

США, Майами, Флорида: **+1(954)274-4435**

Время работы

Понедельник – Суббота: **9:00 - 21:00**
EDT

Воскресенье: **Закрито**

Адрес



Harbour Towne Marina, 850 NE 3rd St,
STE 213, Dania, FL 33004