

CHARADE — ENDEAVOUR



Builder: ENDEAVOUR

Year Built: 1985

Model: Cruising Sailboat

Price: PRICE ON APPLICATION

Location: United States

LOA: 42' 3" (12.88m)

Beam: 13' 0" (3.96m)

Max Draft: 5' 0" (1.52m)

Our experienced yacht broker, Andrey Shestakov, will help you choose and buy a yacht that best suits your needs **Charade — ENDEAVOUR** from our catalogue. Presently, at Shestakov Yacht Sales Inc., we have a wide variety of yachts available on our sale's list. We also work in close contact with all the big yacht manufacturers from all over the world.

If you would like to buy a yacht **Charade — ENDEAVOUR** or would like help answering any questions concerning purchasing, selling or chartering a yacht, please call **+1(954)274-4435**

TABLE OF CONTENTS

TABLE OF CONTENTS	2
SPECIFICATIONS	3
Overview	3
Basic Information	5
Dimensions	5
Speed, Capacities and Weight	6
Accommodations	6
Hull and Deck Information	6
Engine Information	6
PHOTOS	7
CONTACTS	13
Contact details	13
Telephones	13
Office hours	13
Address	13

SPECIFICATIONS

Overview

"Charade" has ample space and would make a great live aboard or very sturdy offshore cruiser.

"Charade" was purchased by her current owners 18 years ago. This vessel offers the prospective buyer an opportunity to acquire a large blue ocean vessel at a price that is palatable.

With a new Bottom March 2018 and freshly waxed hull the vessel is ready to go back to sea.

Charade also comes with a 10' Zodiac tender.

Please see video, full specs and descriptions for a detailed look!

Things to Consider

**** New 2018 Interlux Ablative Bottom Paint. * Fresh wax on hull. * Universal 6.5 KW diesel generator with 879 hrs. * Large Stall Showers in both heads. * Walk around Queen berth in master. * New Salon upholstery 2014. * New fuel tank 2015. * 16,000 BTU Marine Air A/C in Salon. * 6,500 Mermaid A/C in Master Stateroom. * All Manuals are aboard. * Decks are solid everywhere. * Spares: Seawater Pump, filters, Macerator and general items. * 125' anchor chain with 250' nylon rode. * 35 lb. CQR anchor (rigged) on bow. * 20 lb. Aluminum Fortress with 125' chain and 250' nylon rode. * 50 lb. Steel Fortress with 125' chain and 250' nylon rode.***

Interior woodwork on this vessel is warm and beautiful with ample room to move about.

Electronics

**** Raymarine RC 530 Multifunctional Nav Panel in Cockpit. * Raymarine RL 70 Multifunctional Nav Panel at Nav Station. * Raymarine GPS 390 AT Navigation Station. * Raymarine ST 60 Depth. * Raymarine ST 60 Wind with True and Apparent. * Raymarine ST 60 Speed Log. * Raymarine ST 6000 Autopilot. * Standard Horizon Intrepid with Distress. * Standard Horizon RAM Mike at Helm. * Two Hand Held VHF Radio's. * Sony X-POD Audio Entertainment System. * 10 Disk CD Changer. * Weems and Plath Clock, Tide and Barometer. * Danforth Magnetic Compass at Helm. * Seataalk Integrator. Lets electronics share information. * Cockpit and House Speakers.***

Engine

**** Perkins 4-154 Four Cylinder at 62 hp. and 3400 hrs. * Racor 500 Fuel Filter/Water Separator. * Mechanical Fuel Lift Pump and Electric Fuel Pump. * Hydraulic Transmission***

with Stainless Drive Shaft. * Three Blade Bronze Prop. * Single Lever Engine Speed and Transmission. * Wet Exhaust with Lift Muffler. * Halon Automatic Fire Extinguisher. * Cable Steering with Bronze Rudder Quadrant. * Rudder Angle Indicator. * Fuel Level Gauge at Nav Station.

Electrical

**** Universal 6.5 KW Diesel Generator with 879 hrs. * Generator Start/Stop at Nav Station. * Racor 500 Fuel Filter/Water Separator. * Constavolt 30 amp Battery Charger. * Engine Driven 12 VDC Alternator. * Two Type 31 Engine Start Batteries. New 2015. * Two Type 31 House Batteries. New 2016. * 120VAC/12VDC Breaker Panel at Nav. Station. * Battery Switch, Shore Power/Generator Switch. * 500 WATT Inverter for Small Electronics. * Two 30 amp Shorepower Inlets. * Shorepower Cord.***

Mechanical

**** Marine Air 16,000 BTU A/C with Reverse Cycle Heat. * Mermaid 6,500 BTU A/C in Master Stateroom. * Two Rule Bilge Pumps. * Shower Sumps. * Macerator for Overboard Discharge. * Raritan 6 gal. Water Heater with Eng. Heat Exchanger. * On Demand Hot and Cold Running Water Throughout.***

Ground Tackle

**** Lewmar 12 VDC Vertical Anchor Windlass. * 125' Chain and 250' Nylon Rode. * 35 lb. CQR Plow Type Anchor Rigged. * 20 lb. Fortress Anchor (aluminum) 50' chain/250' nylon rode. * 50 lb. Fortress Anchor (steel) 50' chain/250' nylon rode. * Stainless Type Roller Anchor Housing.***

Sails

**** Pro Furl Roller Furling Genoa at 110%. * Fully Battened Mainsail. * New Asymmetrical Spinnaker. * Two Number 28 Bariert Winches at Cockpit. * Two Number 18 Bariert Winches on Mast.***

Salon

**** Circular Dinette With round Teak Table. * Settee across on the STBD Side. * Freshly re-upholstered Salon Fabrics 2014. * Overhead Hatches. * Cabinetry and Book Cases to port and Starboard.***

Galley

**** Galley Maid Stainless Propane Stove with Oven. * Kenmore Microwave Oven. * Stainless Double Sink. * Portable Two Burner Hot Plate. * In Counter Gunert Refrigerator and Freezer Box.***

Forward Stateroom

*** Hangup Closet. * Under Berth Drawers. * Reading Lights. * Filler Section for Space Between Sides. * Overhead Hatch. * Private Entrance Door to Forward Head.**

Forward Head

*** Stainless Sink and Mirror. * Shower Stall with seat and Door to Fwd. Stateroom. * Manual Pump Toilet. * Hot and Cold Running Water.**

Master Stateroom Aft

*** Lots of Stowage in Hangup's, Drawers and Closets. * Walk Around Queen Berth. * Seats on either lower corner of the Bed. * Overhead Hatch. * Reading Lights. * 6.5 KW A/C with Control Pad.**

After Head

*** Stainless Sink and Mirror. * Manual Pump Head. * Shower Stall. * Hot and Cold Running Water.**

Brokers Observations

"Charade" is a good sized vessel which would make an excellent live aboard. This space is always welcome in the normal course of events as well. Decks are solid all the way around and the vessel has a beautiful, warm Teak interior. The teak on the outside of the vessel has been well kept and the appearance is very good.

Overall an excellent opportunity to get into a good sized ocean going vessel for the price.

Basic Information

Category: Cruising Sailboat

Model Year: 1985

Year Built: 1985

Country: United States

Dimensions

LOA: 42' 3" (12.88m)

Beam: 13' 0" (3.96m)

Max Draft: 5' 0" (1.52m)

Clearance: 63' 0" (19.20m)

Speed, Capacities and Weight

Displacement: 25000 Pounds

Water Capacity: 135 Gallons

Holding Tank: 52 Gallons

Fuel Capacity: 48 Gallons

Accommodations

Total Cabins: 2

Total Heads: 2

Hull and Deck Information

Hull Material: Fiberglass

Engine Information

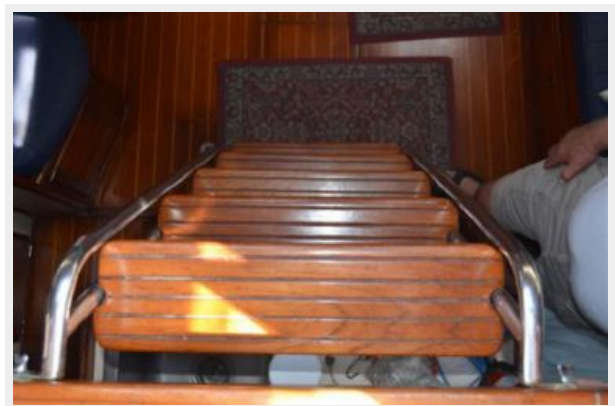
Engines: 1

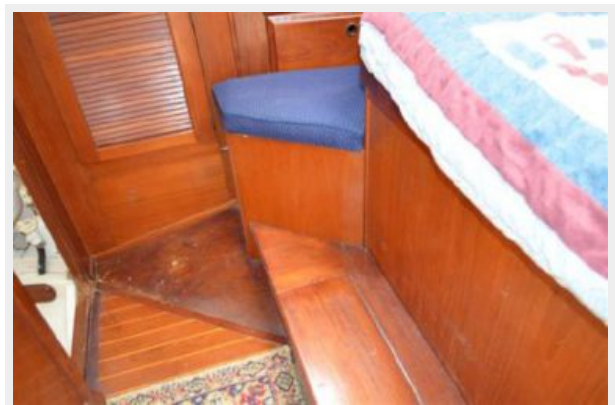
Manufacturer: Perkins

Model: 4-154

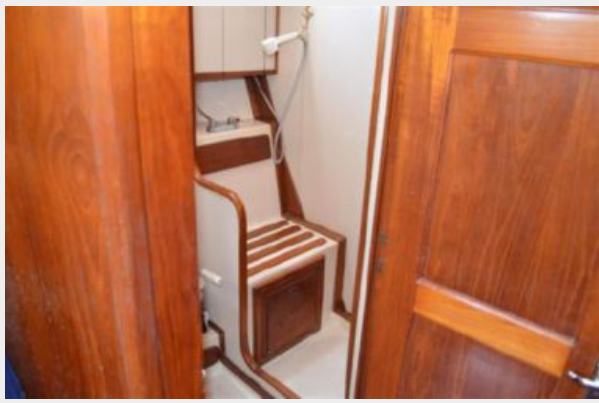
Fuel Type: Diesel

PHOTOS













CONTACTS

Andrey Shestakov, leading yacht broker of the sales department of Shestakov Yacht Sales Inc. Shestakov Yacht Sales Inc., the official representative of the Miami/Fort Lauderdale FL headquarters.

Contact details

Email: andrey@shestakovyachtsales.com

Web: shestakovyachtsales.com/en/

Telephones

USA: +1(954)274-4435

Office hours

Monday – Saturday: **9:00 - 21:00** EDT

Sunday: **closed**

Address



Harbour Towne Marina, 850 NE 3rd St,
STE 213, Dania, FL 33004