

## GRA/DER — TASWELL



**Builder:** TASWELL

**Year Built:** 1992

**Model:** Cruising Sailboat

**Price:** PRICE ON APPLICATION

**Location:** United States

**LOA:** 49' 0" (14.94m)

**Beam:** 15' 0" (4.57m)

**Max Draft:** 5' 3" (1.60m)

Our experienced yacht broker, Andrey Shestakov, will help you choose and buy a yacht that best suits your needs **Gra/Der — TASWELL** from our catalogue. Presently, at Shestakov Yacht Sales Inc., we have a wide variety of yachts available on our sale's list. We also work in close contact with all the big yacht manufacturers from all over the world.

If you would like to buy a yacht **Gra/Der — TASWELL** or would like help answering any questions concerning purchasing, selling or chartering a yacht, please call **+1(954)274-4435**

---

# TABLE OF CONTENTS

---

TABLE OF CONTENTS	2
SPECIFICATIONS	3
Overview	3
Basic Information	3
Dimensions	3
Speed, Capacities and Weight	3
Accommodations	3
Hull and Deck Information	4
Engine Information	4
DETAILED INFORMATION	5
Accommodations	5
Galley	5
Sails & Rigging	6
Deck Equipment	6
Mechanical Equipment and Details	7
Electrical	8
Electronics/Navigation Equipment	8
Disclaimer	9
Exclusions	9
Disclaimer	9
PHOTOS	10
CONTACTS	21
Contact details	21
Telephones	21
Office hours	21
Address	21

---

# SPECIFICATIONS

---

## Overview

---

**PRICED TO SELL! Extremely nice vessel! The 49 Taswell All Seasons Pilothouse is a true bluewater passagemaker!** Robust construction, Cutter rigged, centercockpit with a full lower helm station and panoramic view from the raised salon pilothouse level. Luxurious three cabin, two head layout. **The Original owners have maintained her in well above average condition** and have used her for only 6 months every year her entire life. Original upgrade 110 Yanmar engine with 1040 hours, NO teak decks, Full blueprints and schematics. 5'3" sheel keel and 64'6" ICW friendly bridge clearance. Please read the full specs for additional information.

## Basic Information

---

**Category:** Cruising Sailboat

**Sub Category:** Center Cockpit

**Model Year:** 1992

**Year Built:** 1992

**Country:** United States

## Dimensions

---

**LOA:** 49' 0" (14.94m)

**LWL:** 40' 9" (12.42m)

**Beam:** 15' 0" (4.57m)

**Max Draft:** 5' 3" (1.60m)

**Clearance:** 64' 6" (19.66m)

**MFG Length:** 48' 10" (14.88m)

## Speed, Capacities and Weight

---

**Displacement:** 32500 Pounds

**Water Capacity:** 200 Gallons

**Holding Tank:** 50 Gallons

**Fuel Capacity:** 200 Gallons

## Accommodations

---

**Total Cabins:** 3

**Total Heads:** 2

---

## Hull and Deck Information

---

**Hull Material:** Fiberglass

---

## Engine Information

---

**Engines:** 1

**Manufacturer:** Yanmar

**Model:** 4LHTE

**Fuel Type:** Diesel

---

# DETAILED INFORMATION

---

## Accommodations

---

- (3) stateroom layout, (2) heads layout
- Modern raised pilothouse level with panoramic deck salon windows provide excellent visibility and all weather comfortable at the interior helm station
- Beautifully maintained teak joinery interior throughout
- Cream leather wrap around settee seats 6 easily
- New upholstery 2015
- Highly varnished teak dining table to port Table lowers to convert to double
- Settee has padded lee board
- Full helm station, helm chair and navigation desk to starboard
- Step down and forward to the fully equipped galley
- The forward berth is a centerline queen berth with cedar lined lighted hanging lockers, cabinets and drawers, forward access to chain locker
- The forward head is to port and has a Raritan manual head, vanity sink and shower stall with teak grate floor
- Opposite is the bunk room with 2 over/under bunks, cedar lined lighted hanging locker and storage
- In the passageway leading aft from the salon are numerous lockers with louvered doors and a Splendide combination washer/dryer
- The master cabin aft is built beam to beam and has a centerline queen berth with upholstered side seats on each side, numerous drawers, cedar lined lighted hanging lockers and a private ensuite head
- The aft head has a separate shower stall with a tub, manual head and vanity sink
- Abundant natural light and plenty of natural ventilation with the large deck salon windows, seven Lewmar opening hatches and opening port lights with screens in galley, salon, and staterooms, 2 solar vents, 4 Dorade vents and sliding companionway entry
- Teak and Holly cabin sole
- New hard formica headliner (2017)
- (2) New Dometic Reverse cycle air conditioning/ heating units, 10,000 btu, 16,000 btu
- (2017) Splendide Washer Dryer combination
- (10) 12v Fans
- 12v lighting

## Galley

---

- This fully equipped galley has abundant provisioning room and numerous storage cabinets
- Grunert refrigerator/freezer units, top and front loading, engine driven and 110
- Force 10 (3) burner gimbaled LPG Stove and oven
- (2) 20# aluminum LPG tanks

- Xintex LPG sniffer
- SS sinks with single lever faucet and counter covers
- Pressure water system
- Water filter system
- Village Marine 9gph Reverse Osmosis System
- 15 gal Hot water
- Microwave
- GFCI outlets
- Rail mounted Magna BBQ grill

---

## Sails & Rigging

---

- Cutter rigged
- Aluminum mast and boom
- Double spreaders
- Wire standing rigging, 2007
- Forspar Electric and Manual In mast furling Main sail
- Genoa 130%
- Jib 100%
- Drifter, 2000
- Staysail 2005
- Harken roller furling and self tacking
- All sails in very good condition
- Hall Quick Vang
- (4) cabin/cockpit mounted winches: two cockpit Lewmar 56 self-tailing, 3 speed, One cabin top Lewmar 43 self-tailing, One Lewmar 43 self-tailing; 2-speed winches
- 5 line clutches on starboard side
- Four turning blocks at base of mast
- Lewmar Aluminum tracks and cars for fore sails
- Topping lift
- Reefing system
- Two roller furlings: fore sail and Staysail; made by Harken
- 64'6" bridge clearance

---

## Deck Equipment

---

- Maxwell 3500 Electric windlass with foot controls and remote at helm
- Anchor washdown system
- SS Double anchor rollers
- Split anchor locker and chain fall
- 60 lb. galvanized CQR plow style anchor
- 66 lb Bruce anchor

- 55 lb Fisherman Anchor
- 250 foot of 3/8 inch galvanized BBB chain with 300 foot of 3/4 inch 3 strand nylon line
- 250 foot 1" 3 strand nylon anchor line
- Bow pulpit with SS rail and center opening
- SS Stern rail
- (8) 12 inch cleats
- Tall 3' SS stanchions for safety
- Side gates and double lifelines
- Excellent SS grabrails in all the right places
- 4 SS dorade vents with SS grab bars
- Centercockpit with generous seating
- Raised helm seat
- Binacle with teak trimmed steering wheel
- Teak cockpit table
- Flip chairs
- Non skid deck
- Blue Sunbrella Bimini
- Dodger with Eisenglass
- Inlaid teak plank in cockpit seating
- Teak grate in cockpit sole over fiberglass shell
- Scuppers
- Intregal swim platform on stern c/w shower
- St Croix Heavy SS Dingy Davits
- SS Outboard hoist
- Avon 6 person Liferaft on aft deck, needs recert
- Aluminum perforated toe rail
- Wide walk arounds
- Aft deck lockers and dedicated propane locker
- Sheel keel, 5'3" draft
- Skeg hung rudder
- Fresh bottom paint (Nov 2017)
- Soda blasted and Barrier coated (2014)

---

## Mechanical Equipment and Details

---

- 110 hp Yanmar 4LHTE Turbo diesel 1041 hours
- c/w Engine Blower/Dryer
- Kanzai transmission
- Dual Racor 500 fuel filters/water separater
- Fuel polished 2017
- Fresh water cooled
- Wet exhaust system
- 3 bladed Feathering Max Prop

- Cutlass bearing 2015
- 200 gallon fuel capacity in black iron tanks
- 200 gallon water capacity in SS tanks
- (2) accumulator tanks and freshwater pump
- (2) 25 gal holding tanks
- (2) Raritan manual raw water flush toilets, macerator and Y valve
- Hydraulic steering system
- (2) helm stations: lower station and cockpit station
- Rule 2000 gph bilge pump with automatic float switch
- High water alarm
- Henderson manual bilge pump

---

## Electrical

---

- Electric panel
- Newmar charger
- Balmar 100 amp Alternator
- (3) 12 volt Gel type lead acid 8D batteries 2012
- 12 volt DC/125V 50 amp AC power midship and on stern
- (1) group 27 Gel Type battery for generator start
- Onan 8KW @ 60 Hz diesel Generator , 620 hours
- Heart Interface 2800 watt Charger/Inverter
- (2) Perko rotary battery selector switch
- 80 watt Solar panel for trickle charge batteries
- Four Winds wind generator
- Controller
- 2) 50 amp inlets, midship and on stern
- Shore power cord
- Bonding system
- Copper lightning grounding plate
- Radar reflector
- Shakespeare TV/FM antenna on mast

---

## Electronics/Navigation Equipment

---

- ICOM - IC-M 304 VHF w/Distress (2012)
- ICOM IC-M 604 VHF w/Distress (2012)
- Garmin - GPS Map 4208 (2012)
- Garmin GPS Map 4212 (2012)
- Garmin GPS Map 182C (2012)
- Garmin Radar (2012) in lower helm with repeater in cockpit
- Radar Radome mounted mid mast



- Raymarine - ST 7000 Autopilot (2012)
- Raymarine S7002 Autopilot repeater at lower helm (2012)
- Raymarine - ST50 Depth sounder
- Raymarine - ST50 Speed log
- Raymarine - ST50 Tridata
- ICOM - IC-M 802 Single Side Band/Ham
- (2) Ritchie 6" Powerdamp Compass
- Chelsea Barometer
- Chelsea Ships Clock
- Sony AM/FM and CD Changer - CDX-R30M w/U500Toshiba 20" TV DVD
- Follow Me TV - Direct TV

---

## Disclaimer

The Company offers the details of this vessel in good faith but cannot guarantee or warrant the accuracy of this information nor warrant the condition of the vessel. A buyer should instruct his agents, or his surveyors, to investigate such details as the buyer desires validated. This vessel is offered subject to prior sale, price change, or withdrawal without notice.

---

## Exclusions

Owner's personal belongings.

---

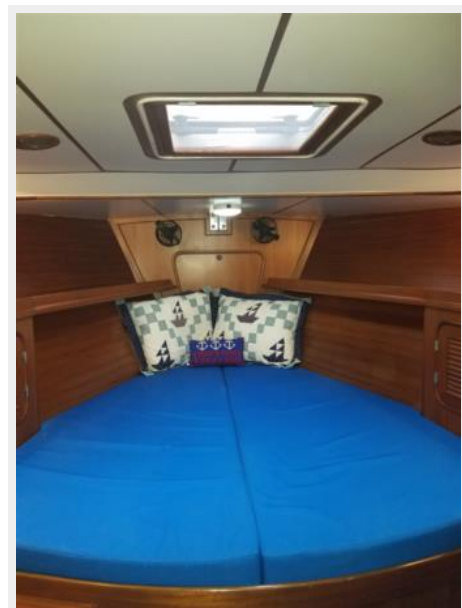
## Disclaimer

The Company offers the details of this vessel or yacht in good faith but cannot guarantee or warrant the accuracy of this information nor warrant the condition of the vessel. A buyer should instruct his representatives, agents, or his surveyors, to investigate such details as the buyer desires validated. This vessel or yacht is offered subject to prior sale, price change, or withdrawal without notice.

# PHOTOS









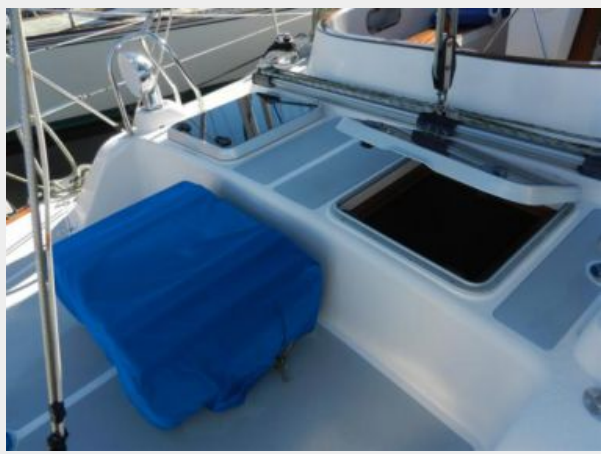


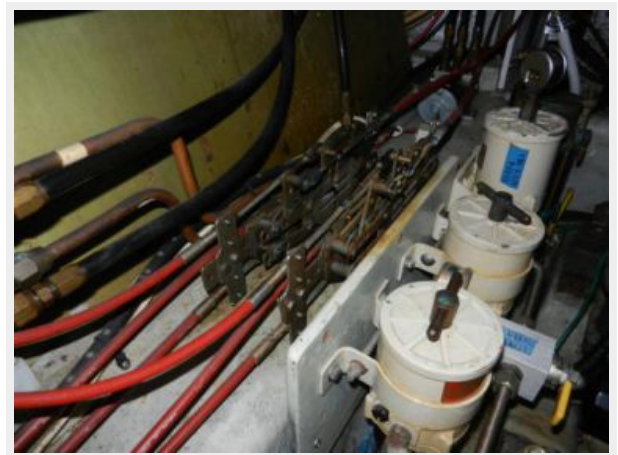














---

# CONTACTS

---

Andrey Shestakov, leading yacht broker of the sales department of Shestakov Yacht Sales Inc. Shestakov Yacht Sales Inc., the official representative of the Miami/Fort Lauderdale FL headquarters.

---

## Contact details

---

Email: [andrey@shestakovyachtsales.com](mailto:andrey@shestakovyachtsales.com)

Web: [shestakovyachtsales.com/en/](http://shestakovyachtsales.com/en/)

---

## Telephones

---

USA: +1(954)274-4435

---

## Office hours

---

Monday – Saturday: **9:00 - 21:00** EDT

Sunday: **closed**

---

## Address

---



Harbour Towne Marina, 850 NE 3rd St,  
STE 213, Dania, FL 33004