

GRA/DER — TASWELL



Судостроитель: TASWELL

Год постройки: 1992

Модель: Крейсерская яхта

Цена: ЦЕНА ЯХТЫ ПО ЗАПРОСУ

Местонахождение: United States

Длина общая: 49' 0" (14.94m)

Ширина: 15' 0" (4.57m)

Макс. осадка: 5' 3" (1.60m)

Купить **Gra/Der — TASWELL** а также выбрать подходящую вам яхту из нашего каталога яхт вам поможет опытный яхтенный брокер Андрей Шестаков. На сегодняшний день компания **Shestakov Yacht Sales Inc.** имеет большое количество яхт в собственном списке продаж, а также тесно сотрудничает со всеми крупными яхтенными производителями по всему миру.

Для того чтобы купить яхту **Gra/Der — TASWELL** а также проконсультироваться по любому вопросу связанному с покупкой, продажей, чартером яхт позвоните по телефону **+7(918)465-66-44**.

ОГЛАВЛЕНИЕ

ОГЛАВЛЕНИЕ	2
ХАРАКТЕРИСТИКИ	3
Обзор	3
Основная информация	3
Размеры	3
Скорость, вместимость и масса	3
Размещение	4
Корпус и палуба	4
Информация о двигателе	4
ПОДРОБНОЕ ОПИСАНИЕ	5
Accommodations	5
Galley	5
Sails & Rigging	6
Deck Equipment	6
Mechanical Equipment and Details	7
Electrical	8
Electronics/Navigation Equipment	8
Disclaimer	9
Исключения	9
Отказ от ответственности	9
ФОТОГРАФИИ	10
КОНТАКТЫ	21
Контактная информация	21
Телефоны	21
Время работы	21
Адрес	21

ХАРАКТЕРИСТИКИ

Обзор

PRICED TO SELL! Extremely nice vessel! The 49 Taswell All Seasons Pilothouse is a true bluewater passagemaker! Robust construction, Cutter rigged, centercockpit with a full lower helm station and panoramic view from the raised salon pilothouse level. Luxurious three cabin, two head layout. **The Original owners have maintained her in well above average condition** and have used her for only 6 months every year her entire life. Original upgrade 110 Yanmar engine with 1040 hours, NO teak decks, Full blueprints and schematics. 5'3" sheel keel and 64'6" ICW friendly bridge clearance. Please read the full specs for additional information.

Основная информация

Тип судна: Крейсерская яхта

Подкатегория: Center Cockpit

Модельный год: 1992

Год постройки: 1992

Страна: United States

Размеры

Длина общая: 49' 0" (14.94m)

Длина по ватерлинии: 40' 9" (12.42m)

Ширина: 15' 0" (4.57m)

Макс. осадка: 5' 3" (1.60m)

Трапы: 64' 6" (19.66m)

Длина привального бруса: 48' 10" (14.88m)

Скорость, вместимость и масса

Водоизмещение: 32500 Pounds

Вместимость воды: 200 Gallons

Вместимость сточного бака: 50 Gallons

Объем топливного бака: 200 Gallons

Размещение

Всего кают: 3

Всего ком. состава: 2

Корпус и палуба

Материал корпуса: Fiberglass

Информация о двигателе

Двигатели: 1

Производитель: Yanmar

Модель: 4LHTE

Тип топлива: Diesel

ПОДРОБНОЕ ОПИСАНИЕ

Accommodations

- (3) stateroom layout, (2) heads layout
- Modern raised pilothouse level with panoramic deck salon windows provide excellent visibility and all weather comfortable at the interior helm station
- Beautifully maintained teak joinery interior throughout
- Cream leather wrap around settee seats 6 easily
- New upholstery 2015
- Highly varnished teak dining table to port Table lowers to convert to double
- Settee has padded lee board
- Full helm station, helm chair and navigation desk to starboard
- Step down and forward to the fully equipped galley
- The forward berth is a centerline queen berth with cedar lined lighted hanging lockers, cabinets and drawers, forward access to chain locker
- The forward head is to port and has a Raritan manual head, vanity sink and shower stall with teak grate floor
- Opposite is the bunk room with 2 over/under bunks, cedar lined lighted hanging locker and storage
- In the passageway leading aft from the salon are numerous lockers with louvered doors and a Splendide combination washer/dryer
- The master cabin aft is built beam to beam and has a centerline queen berth with upholstered side seats on each side, numerous drawers, cedar lined lighted hanging lockers and a private ensuite head
- The aft head has a separate shower stall with a tub, manual head and vanity sink
- Abundant natural light and plenty of natural ventilation with the large deck salon windows, seven Lewmar opening hatches and opening port lights with screens in galley, salon, and staterooms, 2 solar vents, 4 Dorade vents and sliding companionway entry
- Teak and Holly cabin sole
- New hard formica headliner (2017)
- (2) New Dometic Reverse cycle air conditioning/ heating units, 10,000 btu, 16,000 btu
- (2017) Splendide Washer Dryer combination
- (10) 12v Fans
- 12v lighting

Galley

- This fully equipped galley has abundant provisioning room and numerous storage cabinets
- Grunert refrigerator/freezer units, top and front loading, engine driven and 110
- Force 10 (3) burner gimbaled LPG Stove and oven
- (2) 20# aluminum LPG tanks

- Xintex LPG sniffer
- SS sinks with single lever faucet and counter covers
- Pressure water system
- Water filter system
- Village Marine 9gph Reverse Osmosis System
- 15 gal Hot water
- Microwave
- GFCI outlets
- Rail mounted Magna BBQ grill

Sails & Rigging

- Cutter rigged
- Aluminum mast and boom
- Double spreaders
- Wire standing rigging, 2007
- Forspar Electric and Manual In mast furling Main sail
- Genoa 130%
- Jib 100%
- Drifter, 2000
- Staysail 2005
- Harken roller furling and self tacking
- All sails in very good condition
- Hall Quick Vang
- (4) cabin/cockpit mounted winches: two cockpit Lewmar 56 self-tailing, 3 speed, One cabin top Lewmar 43 self-tailing, One Lewmar 43 self-tailing; 2-speed winches
- 5 line clutches on starboard side
- Four turning blocks at base of mast
- Lewmar Aluminum tracks and cars for fore sails
- Topping lift
- Reefing system
- Two roller furlings: fore sail and Staysail; made by Harken
- 64'6" bridge clearance

Deck Equipment

- Maxwell 3500 Electric windlass with foot controls and remote at helm
- Anchor washdown system
- SS Double anchor rollers
- Split anchor locker and chain fall
- 60 lb. galvanized CQR plow style anchor
- 66 lb Bruce anchor

- 55 lb Fisherman Anchor
- 250 foot of 3/8 inch galvanized BBB chain with 300 foot of 3/4 inch 3 strand nylon line
- 250 foot 1" 3 strand nylon anchor line
- Bow pulpit with SS rail and center opening
- SS Stern rail
- (8) 12 inch cleats
- Tall 3' SS stanchions for safety
- Side gates and double lifelines
- Excellent SS grabrails in all the right places
- 4 SS dorade vents with SS grab bars
- Centercockpit with generous seating
- Raised helm seat
- Binacle with teak trimmed steering wheel
- Teak cockpit table
- Flip chairs
- Non skid deck
- Blue Sunbrella Bimini
- Dodger with Eisenglass
- Inlaid teak plank in cockpit seating
- Teak grate in cockpit sole over fiberglass shell
- Scuppers
- Intregal swim platform on stern c/w shower
- St Croix Heavy SS Dingy Davits
- SS Outboard hoist
- Avon 6 person Liferaft on aft deck, needs recert
- Aluminum perforated toe rail
- Wide walk arounds
- Aft deck lockers and dedicated propane locker
- Sheel keel, 5'3" draft
- Skeg hung rudder
- Fresh bottom paint (Nov 2017)
- Soda blasted and Barrier coated (2014)

Mechanical Equipment and Details

- 110 hp Yanmar 4LHTE Turbo diesel 1041 hours
- c/w Engine Blower/Dryer
- Kanzai transmission
- Dual Racor 500 fuel filters/water separater
- Fuel polished 2017
- Fresh water cooled
- Wet exhaust system
- 3 bladed Feathering Max Prop

- Cutlass bearing 2015
- 200 gallon fuel capacity in black iron tanks
- 200 gallon water capacity in SS tanks
- (2) accumulator tanks and freshwater pump
- (2) 25 gal holding tanks
- (2) Raritan manual raw water flush toilets, macerator and Y valve
- Hydraulic steering system
- (2) helm stations: lower station and cockpit station
- Rule 2000 gph bilge pump with automatic float switch
- High water alarm
- Henderson manual bilge pump

Electrical

- Electric panel
- Newmar charger
- Balmar 100 amp Alternator
- (3) 12 volt Gel type lead acid 8D batteries 2012
- 12 volt DC/125V 50 amp AC power midship and on stern
- (1) group 27 Gel Type battery for generator start
- Onan 8KW @ 60 Hz diesel Generator , 620 hours
- Heart Interface 2800 watt Charger/Inverter
- (2) Perko rotary battery selector switch
- 80 watt Solar panel for trickle charge batteries
- Four Winds wind generator
- Controller
- 2) 50 amp inlets, midship and on stern
- Shore power cord
- Bonding system
- Copper lightning grounding plate
- Radar reflector
- Shakespeare TV/FM antenna on mast

Electronics/Navigation Equipment

- ICOM - IC-M 304 VHF w/Distress (2012)
- ICOM IC-M 604 VHF w/Distress (2012)
- Garmin - GPS Map 4208 (2012)
- Garmin GPS Map 4212 (2012)
- Garmin GPS Map 182C (2012)
- Garmin Radar (2012) in lower helm with repeater in cockpit
- Radar Radome mounted mid mast

- Raymarine - ST 7000 Autopilot (2012)
- Raymarine S7002 Autopilot repeater at lower helm (2012)
- Raymarine - ST50 Depth sounder
- Raymarine - ST50 Speed log
- Raymarine - ST50 Tridata
- ICOM - IC-M 802 Single Side Band/Ham
- (2) Ritchie 6" Powerdamp Compass
- Chelsea Barometer
- Chelsea Ships Clock
- Sony AM/FM and CD Changer - CDX-R30M w/U500Toshiba 20" TV DVD
- Follow Me TV - Direct TV

Disclaimer

The Company offers the details of this vessel in good faith but cannot guarantee or warrant the accuracy of this information nor warrant the condition of the vessel. A buyer should instruct his agents, or his surveyors, to investigate such details as the buyer desires validated. This vessel is offered subject to prior sale, price change, or withdrawal without notice.

Исключения

При продаже яхты исключаются личные вещи владельца.

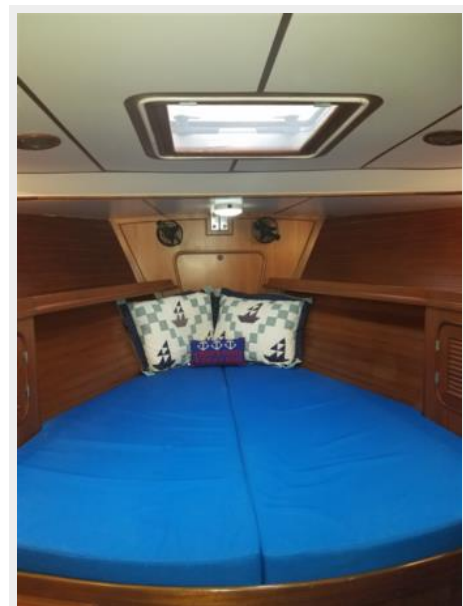
Отказ от ответственности

Компания предоставляет описание судна или яхты добросовестно, но не может гарантировать точность этой информации, а также не ручается за техническое состояние. Покупатель должен проинструктировать своих агентов или оценщиков исследовать представленную информацию более подробно, по собственному желанию. Продажа судна или яхты, изменение цены или снятие с продажи будет происходить без предварительного уведомления.

ФОТОГРАФИИ







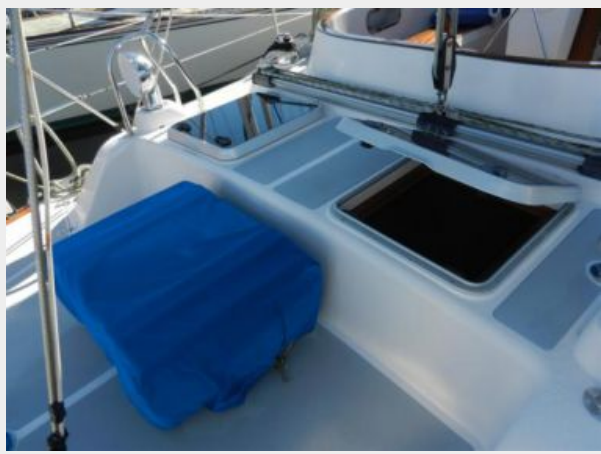


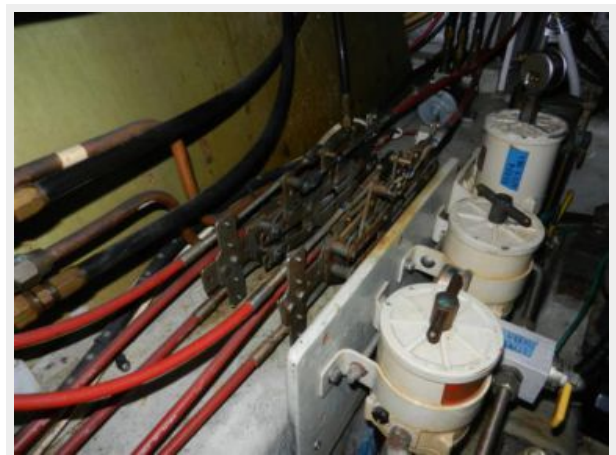














КОНТАКТЫ

Андрей Шестаков (Andrey Shestakov) – ведущий яхтенный брокер отдела продаж яхт и судов компании Shestakov Yacht Sales Inc. Официальный представитель Shestakov Yacht Sales Inc. для русскоговорящих клиентов в центральном офисе компании в Майами/Форт Лодердейл/Флорида/США.

Контактная информация

Email: andrey@shestakovyachtsales.com

Web: shestakovyachtsales.com

Телефоны

Краснодарский край: **+7(918)465-66-44**

США, Майами, Флорида: **+1(954)274-4435**

Время работы

Понедельник – Суббота: **9:00 - 21:00**
EDT

Воскресенье: **Закрето**

Адрес



Harbour Towne Marina, 850 NE 3rd St,
STE 213, Dania, FL 33004