

## ISLAND TING — INTREPID POWERBOATS INC.



**Builder:** INTREPID POWERBOATS INC.

**LOA:** 38' 3" (11.66mm)

**Year Built:** 2007

**Beam:** 11.5

**Model:** Boats

**Max Draft:** 2' 4" (0.71mm)

**Price:** PRICE ON APPLICATION

**Location:** United States

Our experienced yacht broker, Andrey Shestakov, will help you choose and buy a yacht that best suits your needs **Island Ting — INTREPID POWERBOATS INC.** from our catalogue. Presently, at **Shestakov Yacht Sales Inc.**, we have a wide variety of yachts available on our sale's list. We also work in close contact with all the big yacht manufacturers from all over the world.

If you would like to buy a yacht **Island Ting — INTREPID POWERBOATS INC.** or would like help answering any questions concerning purchasing, selling or chartering a yacht, please call **+1(954)274-4435**

# TABLE OF CONTENTS

---

TABLE OF CONTENTS	2
SPECIFICATIONS	3
Overview	3
Basic Information	3
Dimensions	4
Speed, Capacities and Weight	4
Accommodations	4
Hull and Deck Information	4
Engine Information	4
PHOTOS	5
CONTACTS	9
Contact details	9
Telephones	9
Office hours	9
Address	9

# SPECIFICATIONS

## Overview

Additional Specs, Equipment and Information: Boat Name Island Ting Specs Builder: Intrepid Designer: Intrepid Hull Shape: Deep Vee Dimensions LOA: 38 ft 3 in Beam: 11 ft 6 in Maximum Draft: 2 ft 4 in Deadrise: 23 ° at Transom Dry Weight: 10000 lbs Engines Engine 1: Engine Brand: Mercury Year Built: 2010 Engine Model: Verado Engine Type: Outboard Engine/Fuel Type: Gas/Petrol Engine Hours: 926 Propeller: 3 blade propeller Engine Power: 300 HP Engine 2: Engine Brand: Mercury Year Built: 2010 Engine Model: Verado Engine Type: Outboard Engine/Fuel Type: Gas/Petrol Engine Hours: 926 Propeller: 3 blade propeller Engine Power: 300 HP Engine 3: Engine Brand: Mercury Year Built: 2010 Engine Model: Verado Engine Type: Outboard Engine/Fuel Type: Gas/Petrol Engine Hours: 926 Propeller: 3 blade propeller Engine Power: 300 HP Tanks Fresh Water Tanks: 1 Plastic (60 Gallons) Fuel Tanks: 1 Aluminum (400 Gallons) Holding Tanks: 1 Plastic (20 Gallons) Accommodations Number of double berths: 1 Number of cabins: 1 Number of heads: 1 Electronics VHF Plotter Autopilot Depthsounder CD player TV set Compass Radio GPS Cockpit speakers Inside Equipment Hot water Electric bilge pump Heating Refrigerator Air conditioning Marine head Bow thruster Battery charger Electrical Equipment Generator - 100 hrs Shore power inlet Outside Equipment/Extras Cockpit cushions Swimming ladder Cockpit shower Electric windlass

## Vessel Overview

Fast and expensive, the Intrepid 377 is a semicustom rocket whose sleek profile and advanced construction set her apart from the more conventional walkaround models of lesser builders. Like all current Intrepid models, the 377 rides on a high-tech, stepped bottom hull with plenty of transom deadrise and a relatively narrow beam. The versatile deck plan of the 377 is designed to accommodate both weekend cruising and serious fishing activities. The centerline console is located well aft in the cockpit to make room for a large L-shaped settee forward, and the interior includes a compact galley, settee to port, and an enclosed head with a separate stall shower. The helm layout is superb, and an electric windless is recessed under a hatch on the bow pulpit. Additional features include a low-profile windshield and bow rails, wide side decks, dual-cylinder hydraulic steering, good range, and a transom door. Note that a removable aft lounge seat is optional as a dive door in the hullside to keep swimmers away from the props.

## Basic Information

**Category:** Boats

**Sub Category:** Walk-around

**Model Year:** 2007

**Year Built:** 2007

**Country:** United States

## Dimensions

**LOA:** 38' 3" (11.66mm)

**Beam:** 11.5

**Max Draft:** 2' 4" (0.71mm)

## Speed, Capacities and Weight

**Water Capacity:** 60 Gallons

**Holding Tank:** 20 Gal Gallons

**Fuel Capacity:** 400 Gal Gallons

## Accommodations

**Total Cabins:** 1

**Total Heads:** 1

## Hull and Deck Information

**Hull Material:** Fiberglass

## Engine Information

**Engines:** 3

**Manufacturer:** Mercury

**Engine Type:** Outboard

**Fuel Type:** Gas/Petrol



# PHOTOS

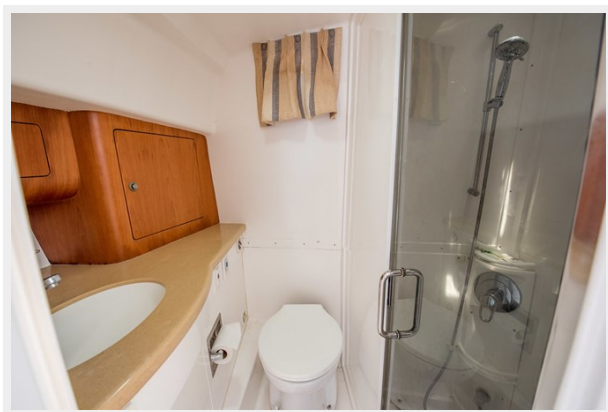














# CONTACTS

---

Andrey Shestakov, leading yacht broker of the sales department of Shestakov Yacht Sales Inc. Shestakov Yacht Sales Inc., the official representative of the Miami/Fort Lauderdale FL headquarters.

## Contact details

---

Email: **andrey@shestakovyachtsales.com**

Web: [shestakovyachtsales.com/en/](http://shestakovyachtsales.com/en/)

## Telephones

---

USA: **+1(954)274-4435**

## Office hours

---

Monday – Saturday: **9:00 - 21:00 EDT**

Sunday: **closed**

## Address

---



Harbour Towne Marina, 850 NE 3rd St,  
STE 213, Dania, FL 33004