

JELEBEN — SOUTHERN CROSS



Builder: SOUTHERN CROSS

LOA: 28' (8.53m)

Model: Aft Cockpit

Our experienced yacht broker, Andrey Shestakov, will help you choose and buy a yacht that best suits your needs **Jeleben — SOUTHERN CROSS** from our catalogue. Presently, at Shestakov Yacht Sales Inc., we have a wide variety of yachts available on our sale's list. We also work in close contact with all the big yacht manufacturers from all over the world.

If you would like to buy a yacht **Jeleben — SOUTHERN CROSS** or would like help answering any questions concerning purchasing, selling or chartering a yacht, please call **+1(954)274-4435**

TABLE OF CONTENTS

TABLE OF CONTENTS	2
SPECIFICATIONS	3
Overview	3
Basic Information	4
Dimensions	4
Accommodations	4
Hull and Deck Information	4
PHOTOS	5
CONTACTS	11
Contact details	11
Telephones	11
Office hours	11
Address	11

SPECIFICATIONS

Overview

- Fall in love with this beautiful cutter! She has been lovingly updated to a like new condition in 2014. This labor of love is apparent from first glance and is now offered for sale to the first lucky person.
- Updates include: New Beta Marine 16hp diesel engine 2015
- All new standing and running rigging 2015
- Flag blue hull and cream deck paint with Allcraft 2000 paint
- 6 coats Interlux 2000 barrier coats
- 4 coats black ablative and then 3 coats red ablative bottom paint
- All new thru hulls
- New rudder bearing and cutlass bearing
- Mast painted and rewired
- Moveable Wireless instruments from masthead , stored inside and brackets in cockpit
- New compass
- 2 AGM batteries and 40 amp start battery
- Guest battery charger
- All new wiring
- New DC panel
- New mermaid Air conditioning unit, runs on shore power
- LED lighting
- New electric head, macerator, holding
- New water pump
- Water tank pulled and coated
- Rebed all stanchions and hardware
- Powder coated cleats and hatches
- New opening ports
- SS wire lifelines
- New Eno propane stove and oven
- Varnished teak brightwork
- Lexan and teak hatch boards
- Working set of hank on sails
- Spare set of hank on sails
- New tiller
- New cabin sole
- New cushions and upholstery
- Headroom at the companionway entry is 6'1" (with hatch closed). The salon is 5' 10 ½", the head is 5'4".
- Both the V berth and the starboard settee are 6'4" long.
- Full winter cover
- Corian counter in galley

- The bowsprit was rebuilt in 1990
- The hull is fiberglass sandwich construction with an insulated airex foam core
- Canoe stern with tiller
- New dodger

Basic Information

Category: Aft Cockpit

Sub Category: Daysailer

Model Year: 1979

Dimensions

LOA: 28' (8.53mm)

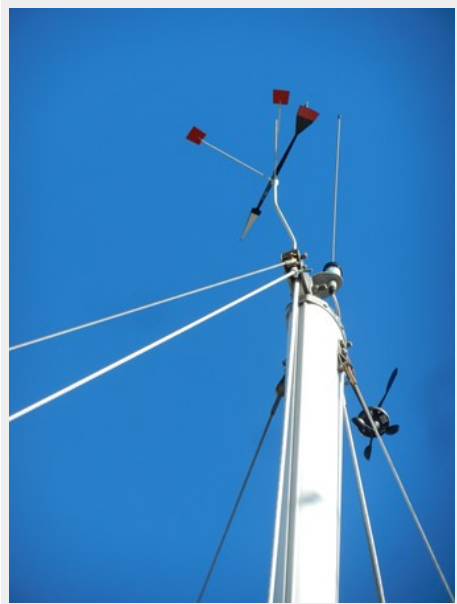
Accommodations

Total Cabins: 1

Hull and Deck Information

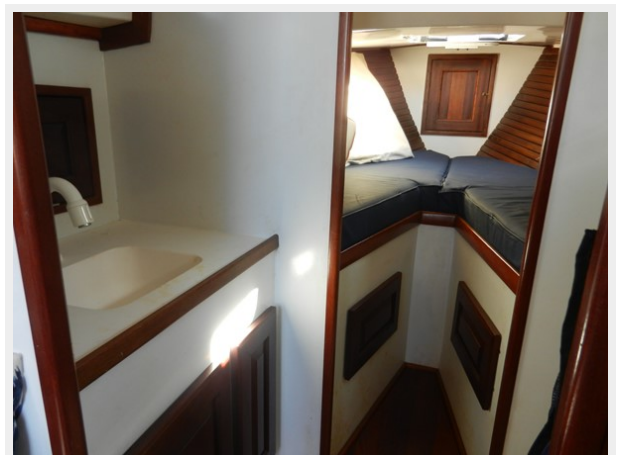
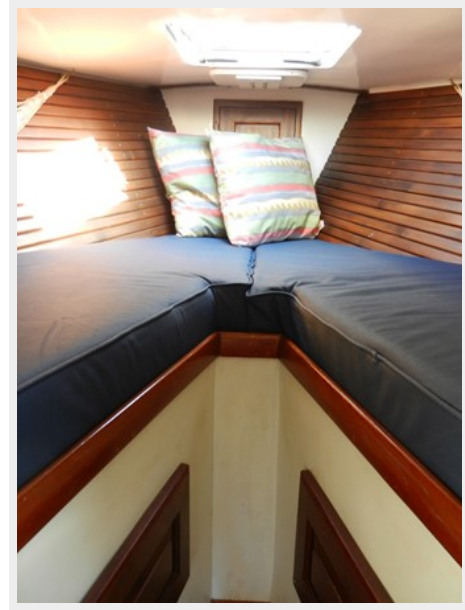
Hull Material: Fiberglass

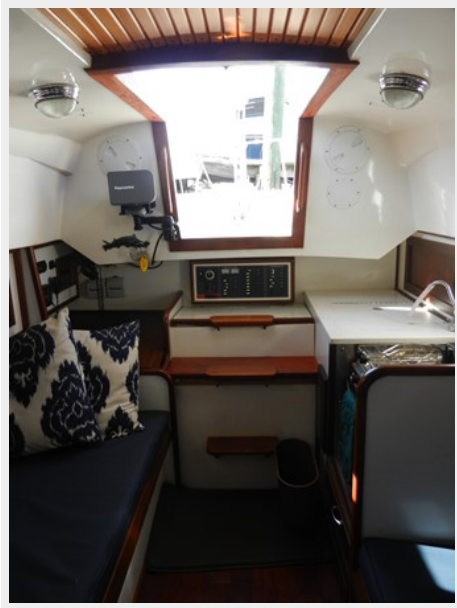
PHOTOS

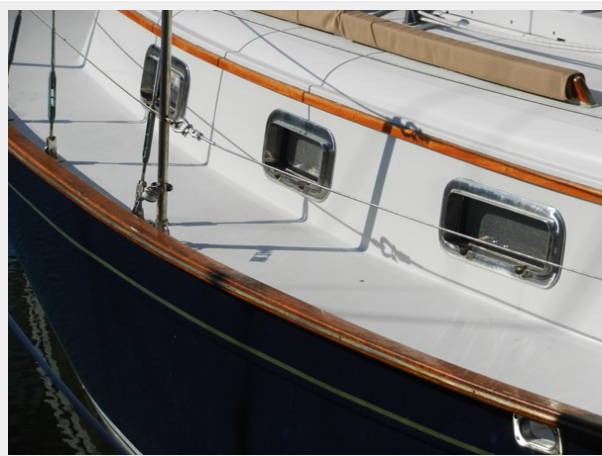












CONTACTS

Andrey Shestakov, leading yacht broker of the sales department of Shestakov Yacht Sales Inc. Shestakov Yacht Sales Inc., the official representative of the Miami/Fort Lauderdale FL headquarters.

Contact details

Email: andrey@shestakovyachtsales.com

Web: shestakovyachtsales.com/en/

Telephones

USA: +1(954)274-4435

Office hours

Monday – Saturday: **9:00 - 21:00** EDT

Sunday: **closed**

Address



Harbour Towne Marina, 850 NE 3rd St,
STE 213, Dania, FL 33004