

JULIE ANN — ALAJUELA YACHT CORP



Судостроитель:
ALAJUELA YACHT CORP

Длина общая: 48' 0" (14.63m)

Год постройки: 1981

Модель: Крейсерская яхта

Цена: ЦЕНА ЯХТЫ ПО ЗАПРОСУ

Местонахождение: United States

Купить Julie Ann — ALAJUELA YACHT CORP а также выбрать подходящую вам яхту из нашего каталога яхт вам поможет опытный яхтенный брокер Андрей Шестаков. На сегодняшний день компания Shestakov Yacht Sales Inc. имеет большое количество яхт в собственном списке продаж, а также тесно сотрудничает со всеми крупными яхтенными производителями по всему миру.

Для того чтобы купить яхту Julie Ann — ALAJUELA YACHT CORP а также проконсультироваться по любому вопросу связанному с покупкой, продажей, чартером яхт позвоните по телефону **+7(918)465-66-44**.

ОГЛАВЛЕНИЕ

ОГЛАВЛЕНИЕ	2
ХАРАКТЕРИСТИКИ	3
Обзор	3
Основная информация	4
Размеры	4
Размещение	4
Корпус и палуба	4
ПОДРОБНОЕ ОПИСАНИЕ	5
Accommodations & Layout	5
Galley and Dinette	5
Sails & Rigging	6
Deck Equipment	6
Hull	7
Electronics & Navigation	8
Mechanical	8
Electrical	9
Disclaimer	9
Исключения	9
Отказ от ответственности	9
ФОТОГРАФИИ	11
КОНТАКТЫ	20
Контактная информация	20
Телефоны	20
Время работы	20
Адрес	20

ХАРАКТЕРИСТИКИ

Обзор

- **RARE FIND! Built for people who want to sail the oceans.**
- **True Bluewater Cruising Ketch . High performance sailing yacht of fiberglass construction and suitable for ocean cruising and racing. Strongly built and factory finished in Costa Mesa, California. Built to Lloyds Standards. These boats rarely come to the market.**
- **New standing rigging 2013**
- **Fresh bottom paint 2018**
- **Hydrovane 2011**
- **Centercockpit with layout designed for comfort at sea and large entertaining area**
- **Please see full listing for details specs...**
- **Currently on the hard in storage**
- **Manufacturer Description recap:**
- **Alajuela Yacht Corporation built the Passporte 48 for people who want to sail the oceans and you have their assurance that the boat was built with the readiness to accept the challenge. Raymond H Richards, a well-respected naval architect and marine engineer, designed the Alajuela Passporte 48 to be a first quality, high performance sailing vessel suitable for ocean cruising and racing. The hull is a blend of classically styled topsides with a modern, hydrodynamic efficient underbody. It's raking stern and patrician sheer and proportions are finished with a modified canoe or cruiser stern. The deck line is reasonably full into the ends and produces a gentle flaring in the bow. The keel has an advanced foil which generates the lift necessary to windward performance. These proportions allow the ballast to be placed very low for greatest effectiveness. Rig proportions are tall, efficient and generous in area taking advantage of the powerful righting moment spectrum the hull will develop. Spaciousness is evident on deck, the wing decks are broad and protected by deep bulwarks. The cockpit has two levels where the helmsman is placed a head taller than the sheet handlers giving him maximum frame of reference for handling the vessel. A variety of winches are found on the unusually large coaming flats in the cockpit. Among the unique features of this design is the "lido" deck. It is bounded by a coaming topped with a fixed rail. While it provides security to and from the companionway and additional working deck space, it is named for it's third function, lounging. Due attention has been given to navigational needs. A large chart table with electronic equipment is part of the saloon area. It is protected from the weather coming down the companionway and yet the navigator has but to step around the ladder to gain the deck. The huge saloon aft has the feel of a traditional great cabin. The quarter berths and settees make fine sea berths. The owner stateroom amidships has a private head. The berth is a full double which can be divided by a bundling board to provide single sea berths. The guest stateroom has an upper and lower which can be converted to a double. Connecting the owners head and guest**

stateroom is a large bulkhead shower space/sauna. The foc'sle has full headroom in way of the hatch and is fitted with lockers and bins for ground tackle, stores and sails. The machinery arrangement is equally notable. The propulsion engine is located below the cabin sole in the tuck of the keel amidships offering ideal accessibility, contribution to the transverse stability and the level shaft line and propeller location ensure optimum propulsive efficiency.

- **Owner comments:** The A48 is a terrific blue water boat. She is nimble, fast, solid and seaworthy. She weighs approx 34000 lbs, and has a 6'-9 inch draft. The ketch configuration is easy to balance. Out of the water, the boat is a true beauty. The keel has an airfoil shape, but no-one would ever consider this a fin keel given the 12,000 lbs of lead in her and the fact that the keel is over 12 feet long. The rudder is also airfoil shaped and perfectly balanced on a skeg. These boats were built to Lloyds of London credited standards. She can turn circles in 1 1/2 boat lengths and is easy to manage. See Utube video sailing 9 1/2 knots wing on wing.

Основная информация

Тип судна: Крейсерская яхта

Подкатегория: Center Cockpit

Модельный год: 1981

Год постройки: 1981

Страна: United States

Размеры

Длина общая: 48' 0" (14.63m)

Размещение

Всего кают: 2

Корпус и палуба

Материал корпуса: Fiberglass

ПОДРОБНОЕ ОПИСАНИЕ

Accommodations & Layout

- Unique layout featuring a very large salon in the stern with a navigation desk at the base of the companionway steps and a large U shaped galley opposite.
- Salon is well laid out for entertaining
- Aft salon features large fold out table that can seat 6 easily
- Owners cabin and guest cabin located centrally in boat. This reduces motion while at sea and anchor
- The sleeping accommodations are two main cabins, double to starboard and bunks that can convert to a double to port, both are situated midship on either side of the main mast for ease of motion at sea.
- Forward to port is the cedar lined shower with teak grate floor and separate manual head to starboard.
- Four additional single sleeping berths are found aft on the salon settees and two berths to the backsides of the settees for a total of 4 singles.
- Forward head at base of the companionway.
- Workshop/Sail Locker in the V cabin.
- Teak interior joinery
- Beveled glass inserts in cabinets in salon and galley
- Butterfly hatch over the salon
- Large wrap around tufted upholstered settee
- Large drop leaf center fixed table with end drawer storage
- Bookcases
- Speakers
- TV
- Forward facing nav desk and seat
- Lockers
- Opening hatches
- Bronze opening ports
- 7 Dorade vents
- Air conditioning, 20,000 btu
- 12V fans
- LED lights
- Brass barometer

Galley and Dinette

- U shaped galley port side opposite companionway entry and next to large aft salon
- White Corian countertop
- Ocean Breeze top loading freezer

- Ocean Breeze front loading refrigeration
- 4 burner propane stove and oven
- 2 propane tanks
- Deep SS sink
- Overhead cabinets and storage

Sails & Rigging

- All new standing and running rigging 2013
- Ketch rigged cutter
- External chainplates
- Aluminum masts
- 64 ft bridge clearance, ICW friendly
- Bow Sprit for spinnaker
- Asymetric Spinnaker with “top down fuller
- Profurl Furler on Genoa
- Hi cut Yankee Genoa 2013
- Low cut deck sweeper genoa, good condition
- Inner stay complete with hank-on storm weight Staysail, good condition
- Main (Fully Battened), slab reefing
- Mack Pack main sail cover with lazy jacks
- Mizzen (Fully Battened) slab reefing 2013
- Mack Pack mizzen sail cover with lazy jacks
- Keel stepped main mast
- Deck stepped mizzen mast
- Winches
- Harken traveller

Deck Equipment

- The cockpit has two levels, the helmsman is placed a head taller than the sheet handlers with unobstructed access from side to side.
- A variety of winches, cleats and instrumentation options are possible on the unusually large coaming flats along the cockpit.
- The wing decks are broad and protected by deep bulwarks.
- Among the unique features of this boat is the "Lido" deck which is bounded by a coaming topped with a fixed rail which provides security to and from the companionway, additional working deck space and lounging.
- Mezzanine (Lido) deck includes opening hatch for ventilation and light, grab bars, table for entertaining. This unusual feature is wonderful at anchor. A shade awning is included which is suspended between the two masts. The lido deck then becomes a lounge for captain and crew.
- Aft cockpit with lazzerettes.
- Cockpit can be converted to outdoor sleeping area
- SS bow pulpit
- Dual anchor rollers
- Lofrans Falkon 1500 W windlass, new motor 2013, Gypsy for 7/16 installed, spare gypsy for 1/2 inch HT chain
- 60 lb CQR Anchor
- 45 lb Delta Anchor 150 ft 7/16 BBB chain
- Aft cockpit with seating and helm
- Cockpit cushions
- 2 flip chairs
- SS stern rail
- Bimini
- Shade awning
- Deep SS Swim ladder
- Edson Wheel
- High bulwarks with teak cap rail
- Rubrail
- Cleats
- Lifesling
- Horseshoe buoy
- 4 hp Mercury outboard

Hull

- Bottom peeled and reglassed with two layers fiberglass, vinyl ester resin, epoxy barrier coat, 2012
- Fresh bottom paint 2018
- Hull is molded in one-piece from hand-laid fiberglass varying in thickness from 1.5 inch near the bilges to 1/2 inch at the topsides. Inside the hull, there are no liners, it's all wood bonded to the hull which is durable while providing accessibility to every nook and cranny. The deck uses plywood coring

- Strong hull-to-deck joint
- Built to Lloyds of London quality standards, inspected during original layout
- Skeg hung rudder with mid support
- 20 inch propeller well protected by keel
- Keel is encapsulated lead filled
- The engine and all tanks are below the cabin sole for a low center of gravity contributing to the stability and seakeeping behavioural dynamics of the vessel
- Draft 6'-9" with 12,000 lbs lead in keel makes for a very stiff and comfortable boat
- Main diesel located low to contribute to ballast.

Electronics & Navigation

- Hydrovane new 2011
- Complete NMEA 2000 backbone for electronics
- Garmin Depthsounder
- Garmin mast head wind direction and speed
- Maretron flux gate compass
- Garmin HD 24 Radar new 2013
- Garmin 5212 touch screen chart plotter, new 2013 can be located in cockpit or down below in salon area
- Garmin VHF with AIS receiver, plus remote mic new 2011
- Simrad AP 28 autopilot with 40 amp Simrad computer head unit
- Simrad commander unit for remote steering
- Raymarine linear actuator new 2013
- ICOM M700 SSB with tuner
- Audiophile cockpit speakers
- Alpine Stereo plus amplifier and Mission speakers below deck

Mechanical

- 85hp Perkins 4.236 main diesel approx 1600 hrs since rebuild, spares include new starter, water pump, injectors, impellers, belts, filters
- Westerbeke BCD 7.6 kW generator new 2011, complete with Westerbeke sound enclosure, 400 hrs spares include impellers, filters
- 20,000 BTU Ocean Breeze air conditioner (new 2013)
- Cold plate ships refrigeration with Ocean Breeze 120 v compressor new 2010
- 20" 3 bladed fixed prop
- Transmission
- Dual Racor filters
- Fuel tank capacity 150 gals
- Bilge pumps
- Bilge pump counter

- (1) Wilcox Crittenden manual head forward
- (1) Groco manual head aft
- Hot water heater
- Water tank capacity 250 gals
- Many spares

Electrical

- Victron 3kw Invertor/Charger with digital control panel 2013
- Newmar Phase Three 3 stage smart charger
- Guest battery switches
- 130 W Kyocera solar panel 2013
- Blue Sky charge controller 2013
- Westerbeke BCD 7.6 kW Generator new 2011, 400 hrs
- 2 AGM group 31 batteries forward, new 2013
- 2 AGM Lifeline group 8D batteries midship, new 2013
- 2 batteries aft - suggest to replace with 4 new batteries
- 12/24V system
- AC Panel, DC Panel
- Shore power cord

Disclaimer

The Company offers the details of this vessel in good faith but cannot guarantee or warrant the accuracy of this information nor warrant the condition of the vessel. A buyer should instruct his agents, or his surveyors, to investigate such details as the buyer desires validated. This vessel is offered subject to prior sale, price change, or withdrawal without notice.

Исключения

При продаже яхты исключаются личные вещи владельца.

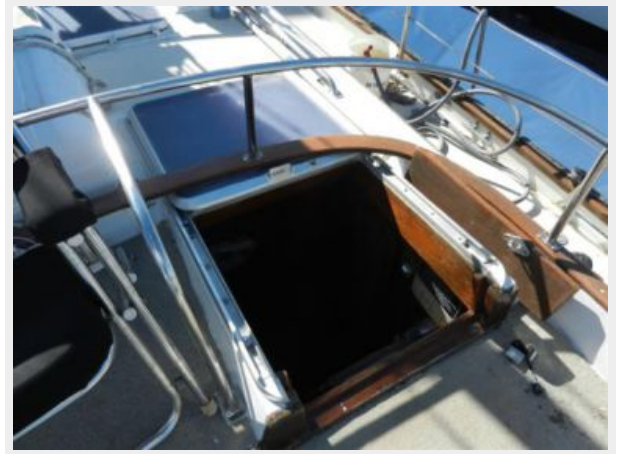
Отказ от ответственности

Компания предоставляет описание судна или яхты добросовестно, но не может гарантировать точность этой информации, а также не ручается за техническое состояние. Покупатель должен проинструктировать своих агентов или оценщиков исследовать представленную информацию более подробно, по собственному желанию. Продажа судна или яхты, изменение цены или снятие с продажи будет происходить без

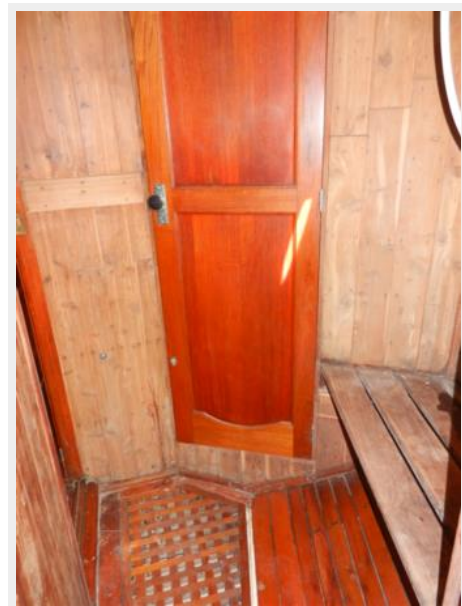
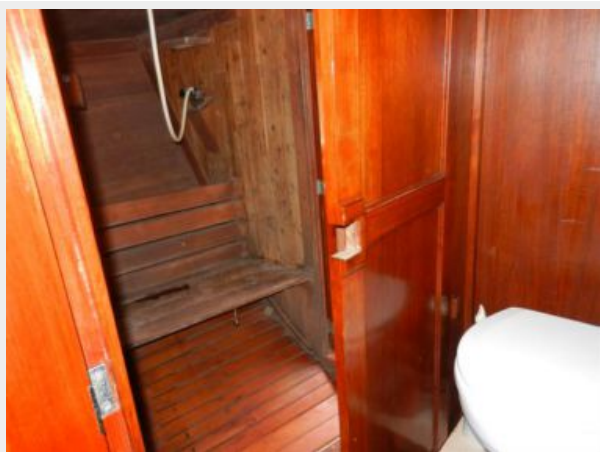
предварительного уведомления.

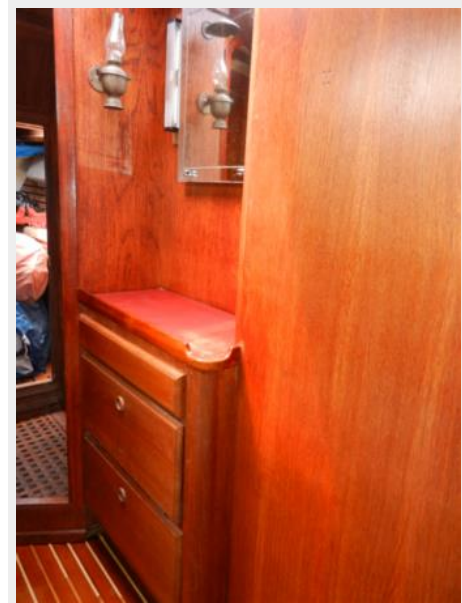
ФОТОГРАФИИ



















КОНТАКТЫ

Андрей Шестаков (Andrey Shestakov) – ведущий яхтенный брокер отдела продаж яхт и судов компании Shestakov Yacht Sales Inc. Официальный представитель Shestakov Yacht Sales Inc. для русскоговорящих клиентов в центральном офисе компании в Майами/Форт Лодердейл/Флорида/США.

Контактная информация

Email: andrey@shestakovyachtsales.com

Web: shestakovyachtsales.com

Телефоны

Краснодарский край: **+7(918)465-66-44**

США, Майами, Флорида: **+1(954)274-4435**

Время работы

Понедельник – Суббота: **9:00 - 21:00**
EDT

Воскресенье: **Закрито**

Адрес



Harbour Towne Marina, 850 NE 3rd St,
STE 213, Dania, FL 33004