

## SALTY J'S — EVERGLADES



**Builder:** EVERGLADES

**Year Built:** 2016

**Model:** Center Console

**Price:** PRICE ON APPLICATION

**Location:** United States

**LOA:** 42' 8" (13.00m)

**Beam:** 12' 0" (3.66m)

**Min Draft:** 2' 4" (0.71m)

**Max Draft:** 3' 2" (0.97m)

Our experienced yacht broker, Andrey Shestakov, will help you choose and buy a yacht that best suits your needs **Salty J's — EVERGLADES** from our catalogue. Presently, at **Shestakov Yacht Sales Inc.**, we have a wide variety of yachts available on our sale's list. We also work in close contact with all the big yacht manufacturers from all over the world.

If you would like to buy a yacht **Salty J's — EVERGLADES** or would like help answering any questions concerning purchasing, selling or chartering a yacht, please call **+1(954)274-4435**

# TABLE OF CONTENTS

TABLE OF CONTENTS	2
SPECIFICATIONS	4
Overview	4
Basic Information	4
Dimensions	4
Speed, Capacities and Weight	4
Accommodations	4
Hull and Deck Information	5
Engine Information	5
DETAILED INFORMATION	6
Vessel Construction	6
Cabin and Head	7
Console/Hardtop	7
Deck/Cockpit	7
Fishability	8
Mechanical/Electrical	8
Seating	9
Additional Installed Options	9
Exclusions	10
Disclaimer	10
PHOTOS	11
Cabin Entrance	11
Cabin	11
Galley Area	11
Head	11
Bow Seating	11
Bow Seating	11
Bow Seating - Storage	12

Forward Console Seating	12
Storage	12
Storage	12
Workstation	12
Fishbox	12
Electrical Panel	13
Console Helm	13
Console Helm	13
Console Helm Panel	13
Navigational Equipment	13
Navigational Equipment	13
Navigational Equipment	14
Console Helm	14
Console Helm	14
Console Helm Seating	14
Salty J's - Everglades 435cc	14
Salty J's - Engines	14
Salty J's	15
CONTACTS	16
Contact details	16
Telephones	16
Office hours	16
Address	16

---

# SPECIFICATIONS

---

## Overview

---

Now introducing, the Everglades family newest addition, the 435cc. As it's Everglades' largest vessel to date, the 435cc is proof that sometimes, size does matter. With a luxurious cabin, plush seating, custom etched-glass partition, and fully equipped head with standing shower you'll have all the amenities of home with the functionality. Its design will pull you in - but the fishability will keep you coming back for more. With a full bait-prep workstation including 10 tackle drawers, tons of gunwale storage, and more than 300 gallons of fish boxes, freezers, and lighted livewell space, you have room for even your most successful day on the water.

## Basic Information

---

**Category:** Center Console

**Model Year:** 2017

**Year Built:** 2016

**Country:** United States

## Dimensions

---

**LOA:** 42' 8" (13.00m)

**Beam:** 12' 0" (3.66m)

**Min Draft:** 2' 4" (0.71m)

**Max Draft:** 3' 2" (0.97m)

**Clearance:** 10' 0" (3.05m)

## Speed, Capacities and Weight

---

**Water Capacity:** 75 Gallons

**Holding Tank:** 30 Gallons

**Fuel Capacity:** 610 Gallons

## Accommodations

---

**Total Cabins:** 1

**Total Heads:** 1

---

## Hull and Deck Information

---

**Hull Material:** Fiberglass

## Engine Information

---

**Engines:** 4

**Manufacturer:** Yamaha

**Model:** F350NCC

**Engine Type:** Outboard

---

# DETAILED INFORMATION

---

## Vessel Construction

---

- Unsinkable
- Lifetime hull warranty and 5 year stem-to-stern warranty
- Variable deadrise deep v-hull
- Patented closed molded RAMCAP® construction process
- NMMA Certified
- Self-bailing cockpit
- No wood construction
- High density, closed cell, structural foam floatation
- Hull laminate - premium gel coat, vinyl-ester barrier coat, vinyl-ester skin coat, polyester print barrier and knitted bi-axle fiberglass
  
- High density PVC composite transom
- Hull liner and deck mated perfectly for a rigid one-piece construction, adding to its long term durability
- Hull liner completely finished inside with Class A surface
- Molded-in diamond non-skid
- Rigging troughs - molded-in and oversized for easy access
- ABS backing used to receive self tapping screws and bolts
- Aluminum frame work - custom fabricated in house meeting stringent standards, sand blasted then powder coated using premium marine grade materials
  
- Heavy-duty bow tow eye
- Gunwale boards - all hand laid and extra heavy duty
- Wire harnesses - manufactured in house using marine grade, tinned copper wire, high grade heat shrink connectors and waterproof deutsch plugs
  
- Torque Spec tightening on all terminals
- Circuit protection - circuit breakers or fuses protect all electrical circuits
- Heavy-duty rub rail with 316 stainless steel insert and end caps
- 316 cast stainless steel and chrome plated fasteners for additional corrosion and stain resistance
- All hardware bedded or gasketed to resist corrosion
- Stainless steel hinges and latches
- Upholstery - extra heavy vinyl with acrylic top coat, Tenara™ thread, and anti-mildew backing - adhered to high density plastic backing (no wood) with flow through foam cushions
  
- Bonding zinc plate
- Heavy-duty, welded bow and stern eyes, bedded and sealed in polyurethane
- Bronze high speed intake strainers

- Transheild™ shipping cover
- Fuel Tank - 610 gal nominal baffled aluminum

---

## Cabin and Head

---

- Shower, curtain and lighted partition wall
- 12K BTU Air conditioner
- 110VAC 30A system
- Water heater
- 20" Flat screen LED TV with DVD
- Microwave
- Glass bowl sink
- Stainless refrigerator
- Queen size bed that converts to a couch
- Faux granite counter tops
- China-bowl head with macerator and holding tank
- Port lights
- Vanity mirror
- Wood grain vanity and floor treatments
- Carbon monoxide detector

---

## Console/Hardtop

---

- Helm seat with armrest, stainless steel drink holders (2)
- Console glove box/storage bin
- Console handrails
- Console power port with USB charging ports
- Carbon fiber steering wheel
- Molded-in fiberglass footrest at the helm
- Room for flat mounted 16" wide displays (3)
- Tempered glass, hydraulic sliding windshield with intelligent wiper and washer system
- LED Flood lighting
- Fusion control stereo head with Bluetooth and JL M-speakers
- Overhead electronics box
- Aluminum powder coated ladder
- Fiberglass hardtop with aluminum powder-coated frame includes LED lights, spreader lights (4), rod holders (7) and kingfish rod holders (2)

---

## Deck/Cockpit

---

- 375ft 5/8 - 8PLAIT 25ft 5/16 chain with swivel and anchor

- Stainless steel plow anchor
- Electric windless
- Fire extinguishers (3)
- Hawse pipes with fixed cleats (2)
- Stereo speakers mounted in the deck (4) with (1) subwoofer
- Stainless steel drink holders
- Cockpit coaming bolsters
- Low profile stainless steel bow rails
- Powder-coated toe rails
- Anti-Fatigue helm pad - mocha or storm gray
- Under gunwale leader storage box
- PFD under gunwale storage box (2)
- Mid-ship raw and freshwater spigots
- High/Low electric bow filler table
- Side utility door that opens inboard
- Premier audio package -Fusion 750 control head with Bluetooth and JL M-series speakers, Includes JL amplifier and subwoofer
- Cockpit area - 200sf

## Fishability

---

- Sliding Yeti® Cooler - 110qt (Deletes with Seakeeper option)
- Pressurized Circulating livewells with lights (2) - 60gal each
- Fish box in floor (fwd.: pump-out) - 225gal
- Fish box/Bait freezer (aft: self-draining) - 45gal
- Stainless steel gunwale flush mounted rod holders bedded and through bolted (11)
- Under gunwale power ports - 30A
- Command leaning post workstation
- Transom rod holders (6)
- Outrigger quick-cam cleats
- Lee® Carbon-fiber outrigger package - 20' poles
- Workstation: Fiberglass molded lid, (10) drawer style tackle boxes with acrylic doors, (4) stainless steel drink holders, (4) leader spool holders, fresh water sink and raw water washdown, (2) cutting boards, built in organizer for tools and knives

## Mechanical/Electrical

---

- Automatic bilge pump: aft (2) - 3700 GPH / fwd. (1) - 2000 GPH
- Sump for gray-water system
- High-water alarm
- LED anchor light



- LED navigation lights
- LED docking lights
- Ritchie® compass
- Remote controlled spotlight
- Dual cylinder trim tabs
- Air horn
  
- Battery charger
- Freshwater tank - 75gal
- Stainless steel trim tabs with position indicator and auto retract (dual cylinder)
- LED courtesy lighting
- Underwater lights
- 5kw generator
- 50' - 30 amp shore power (port and starboard)
- Fresh-water washdown spigot
- Raw-water washdown spigot

---

## Seating

---

- Folding stern bench seat
- Helm seat with armrest
- Forward lounge seating with storage and cushions
- Folding second row of seating at helm
- Bow seating

---

## Additional Installed Options

---

- Underwater camera
- Garmin GHP corepack for Yamaha Helm Master®
- Garmin GMR 624 xHD2 marine radar
- CHIRP Transducers
- Garmin GPSMAP® 7616xsv Triple displays
- Garmin Upper station GPSMAP® 7608xsv Chart plotter
- Garmin Upper station VHF wired GHS10
- Garmin VHF 30i AIS, Black
- SiriusXM radio
- Sun shade
- Full Upper station: With Yamaha Helm Master system, sun-top, (4) drink holders, folding helm seat bolsters, stainless steel grab rail, glove box, stereo remote, space for electronics, folding gas shock assisted
- Everglades Awlgrip® paint in Caribbean Blue Metallic
- White Quad Engines

---

## Exclusions

---

Owner's personal belongings.

---

## Disclaimer

---

The Company offers the details of this vessel or yacht in good faith but cannot guarantee or warrant the accuracy of this information nor warrant the condition of the vessel. A buyer should instruct his representatives, agents, or his surveyors, to investigate such details as the buyer desires validated. This vessel or yacht is offered subject to prior sale, price change, or withdrawal without notice.

# PHOTOS

**Cabin Entrance**



**Cabin**



**Galley Area**



**Head**



**Bow Seating**



**Bow Seating**



**Bow Seating - Storage**



**Forward Console Seating**



**Storage**



**Storage**



**Workstation**



**Fishbox**



**Electrical Panel**



**Console Helm**



**Console Helm**



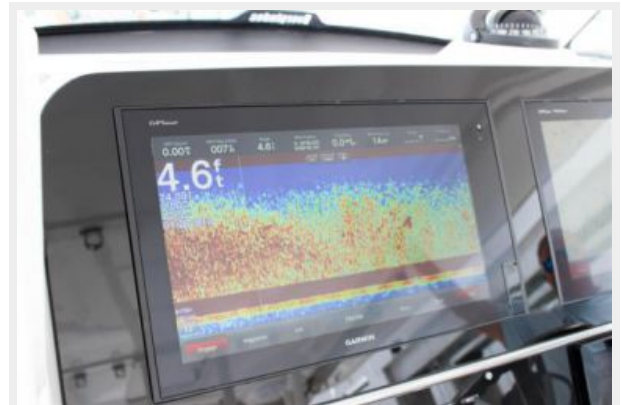
**Console Helm Panel**



**Navigational Equipment**



**Navigational Equipment**





### Navigational Equipment



### Console Helm



### Console Helm



### Console Helm Seating



### Salty J's - Everglades 435cc



### Salty J's - Engines



## Salty J's



# CONTACTS

---

Andrey Shestakov, leading yacht broker of the sales department of Shestakov Yacht Sales Inc. Shestakov Yacht Sales Inc., the official representative of the Miami/Fort Lauderdale FL headquarters.

## Contact details

---

Email: [andrey@shestakovyachtsales.com](mailto:andrey@shestakovyachtsales.com)

Web: [shestakovyachtsales.com/en/](http://shestakovyachtsales.com/en/)

## Telephones

---

USA: +1(954)274-4435

## Office hours

---

Monday – Saturday: **9:00 - 21:00** EDT

Sunday: **closed**

## Address

---



Harbour Towne Marina, 850 NE 3rd St,  
STE 213, Dania, FL 33004