

SALTY J'S — EVERGLADES



Судостроитель: EVERGLADES

Год постройки: 2016

Модель: Яхты с центральной консолью

Цена: **ЦЕНА ЯХТЫ ПО ЗАПРОСУ**

Местонахождение: United States

Длина общая: 42' 8" (13.00m)

Ширина: 12' 0" (3.66m)

Мин. осадка: 2' 4" (0.71m)

Макс. осадка: 3' 2" (0.97m)

Купить **Salty J's — EVERGLADES** а также выбрать подходящую вам яхту из нашего каталога яхт вам поможет опытный яхтенный брокер Андрей Шестаков. На сегодняшний день компания **Shestakov Yacht Sales Inc.** имеет большое количество яхт в собственном списке продаж, а также тесно сотрудничает со всеми крупными яхтенными производителями по всему миру.

Для того чтобы купить яхту **Salty J's — EVERGLADES** а также проконсультироваться по любому вопросу связанному с покупкой, продажей, чартером яхт позвоните по телефону **+7(918)465-66-44**.

ОГЛАВЛЕНИЕ

ОГЛАВЛЕНИЕ	2
ХАРАКТЕРИСТИКИ	4
Обзор	4
Основная информация	4
Размеры	4
Скорость, вместимость и масса	4
Размещение	4
Корпус и палуба	5
Информация о двигателе	5
ПОДРОБНОЕ ОПИСАНИЕ	6
Vessel Construction	6
Cabin and Head	7
Console/Hardtop	7
Deck/Cockpit	7
Fishability	8
Mechanical/Electrical	8
Seating	9
Additional Installed Options	9
Исключения	10
Отказ от ответственности	10
ФОТОГРАФИИ	11
Cabin Entrance	11
Cabin	11
Galley Area	11
Head	11
Bow Seating	11
Bow Seating	11
Bow Seating - Storage	12

Forward Console Seating	12
Storage	12
Storage	12
Workstation	12
Fishbox	12
Electrical Panel	13
Console Helm	13
Console Helm	13
Console Helm Panel	13
Navigational Equipment	13
Navigational Equipment	13
Navigational Equipment	14
Console Helm	14
Console Helm	14
Console Helm Seating	14
Salty J's - Everglades 435cc	14
Salty J's - Engines	14
Salty J's	15
КОНТАКТЫ	16
Контактная информация	16
Телефоны	16
Время работы	16
Адрес	16

ХАРАКТЕРИСТИКИ

Обзор

Now introducing, the Everglades family newest addition, the 435cc. As it's Everglades' largest vessel to date, the 435cc is proof that sometimes, size does matter. With a luxurious cabin, plush seating, custom etched-glass partition, and fully equipped head with standing shower you'll have all the amenities of home with the functionality. Its design will pull you in - but the fishability will keep you coming back for more. With a full bait-prep workstation including 10 tackle drawers, tons of gunwale storage, and more than 300 gallons of fish boxes, freezers, and lighted livewell space, you have room for even your most successful day on the water.

Основная информация

Тип судна: Яхты с центральной консолью **Модельный год:** 2017

Год постройки: 2016

Страна: United States

Размеры

Длина общая: 42' 8" (13.00m)

Ширина: 12' 0" (3.66m)

Мин. осадка: 2' 4" (0.71m)

Макс. осадка: 3' 2" (0.97m)

Трапы: 10' 0" (3.05m)

Скорость, вместимость и масса

Вместимость воды: 75 Gallons

Вместимость сточного бака: 30 Gallons

Объем топливного бака: 610 Gallons

Размещение

Всего кают: 1

Всего ком. состава: 1

Корпус и палуба

Материал корпуса: Fiberglass

Информация о двигателе

Двигатели: 4

Производитель: Yamaha

Модель: F350NCC

Тип двигателя: Outboard

ПОДРОБНОЕ ОПИСАНИЕ

Vessel Construction

- Unsinkable
- Lifetime hull warranty and 5 year stem-to-stern warranty
- Variable deadrise deep v-hull
- Patented closed molded RAMCAP® construction process
- NMMA Certified
- Self-bailing cockpit
- No wood construction
- High density, closed cell, structural foam floatation
- Hull laminate - premium gel coat, vinyl-ester barrier coat, vinyl-ester skin coat, polyester print barrier and knitted bi-axle fiberglass

- High density PVC composite transom
- Hull liner and deck mated perfectly for a rigid one-piece construction, adding to its long term durability
- Hull liner completely finished inside with Class A surface
- Molded-in diamond non-skid
- Rigging troughs - molded-in and oversized for easy access
- ABS backing used to receive self tapping screws and bolts
- Aluminum frame work - custom fabricated in house meeting stringent standards, sand blasted then powder coated using premium marine grade materials

- Heavy-duty bow tow eye
- Gunwale boards - all hand laid and extra heavy duty
- Wire harnesses - manufactured in house using marine grade, tinned copper wire, high grade heat shrink connectors and waterproof deutsch plugs

- Torque Spec tightening on all terminals
- Circuit protection - circuit breakers or fuses protect all electrical circuits
- Heavy-duty rub rail with 316 stainless steel insert and end caps
- 316 cast stainless steel and chrome plated fasteners for additional corrosion and stain resistance
- All hardware bedded or gasketed to resist corrosion
- Stainless steel hinges and latches
- Upholstery - extra heavy vinyl with acrylic top coat, Tenara™ thread, and anti-mildew backing - adhered to high density plastic backing (no wood) with flow through foam cushions

- Bonding zinc plate
- Heavy-duty, welded bow and stern eyes, bedded and sealed in polyurethane
- Bronze high speed intake strainers

- Transheild™ shipping cover
- Fuel Tank - 610 gal nominal baffled aluminum

Cabin and Head

- Shower, curtain and lighted partition wall
- 12K BTU Air conditioner
- 110VAC 30A system
- Water heater
- 20" Flat screen LED TV with DVD
- Microwave
- Glass bowl sink
- Stainless refrigerator
- Queen size bed that converts to a couch
- Faux granite counter tops
- China-bowl head with macerator and holding tank
- Port lights
- Vanity mirror
- Wood grain vanity and floor treatments
- Carbon monoxide detector

Console/Hardtop

- Helm seat with armrest, stainless steel drink holders (2)
- Console glove box/storage bin
- Console handrails
- Console power port with USB charging ports
- Carbon fiber steering wheel
- Molded-in fiberglass footrest at the helm
- Room for flat mounted 16" wide displays (3)
- Tempered glass, hydraulic sliding windshield with intelligent wiper and washer system
- LED Flood lighting
- Fusion control stereo head with Bluetooth and JL M-speakers
- Overhead electronics box
- Aluminum powder coated ladder
- Fiberglass hardtop with aluminum powder-coated frame includes LED lights, spreader lights (4), rod holders (7) and kingfish rod holders (2)

Deck/Cockpit

- 375ft 5/8 - 8PLAIT 25ft 5/16 chain with swivel and anchor

- Stainless steel plow anchor
- Electric windless
- Fire extinguishers (3)
- Hawse pipes with fixed cleats (2)
- Stereo speakers mounted in the deck (4) with (1) subwoofer
- Stainless steel drink holders

- Cockpit coaming bolsters
- Low profile stainless steel bow rails
- Powder-coated toe rails
- Anti-Fatigue helm pad - mocha or storm gray
- Under gunwale leader storage box
- PFD under gunwale storage box (2)
- Mid-ship raw and freshwater spigots
- High/Low electric bow filler table
- Side utility door that opens inboard
- Premier audio package -Fusion 750 control head with Bluetooth and JL M-series speakers, Includes JL amplifier and subwoofer
- Cockpit area - 200sf

Fishability

- Sliding Yeti® Cooler - 110qt (Deletes with Seakeeper option)
- Pressurized Circulating livewells with lights (2) - 60gal each
- Fish box in floor (fwd.: pump-out) - 225gal
- Fish box/Bait freezer (aft: self-draining) - 45gal
- Stainless steel gunwale flush mounted rod holders bedded and through bolted (11)
- Under gunwale power ports - 30A
- Command leaning post workstation
- Transom rod holders (6)
- Outrigger quick-cam cleats
- Lee® Carbon-fiber outrigger package - 20' poles
- Workstation: Fiberglass molded lid, (10) drawer style tackle boxes with acrylic doors, (4) stainless steel drink holders, (4) leader spool holders, fresh water sink and raw water washdown, (2) cutting boards, built in organizer for tools and knives

Mechanical/Electrical

- Automatic bilge pump: aft (2) - 3700 GPH / fwd. (1) - 2000 GPH
- Sump for gray-water system
- High-water alarm
- LED anchor light

- LED navigation lights
- LED docking lights
- Ritchie® compass
- Remote controlled spotlight
- Dual cylinder trim tabs
- Air horn

- Battery charger
- Freshwater tank - 75gal
- Stainless steel trim tabs with position indicator and auto retract (dual cylinder)
- LED courtesy lighting
- Underwater lights
- 5kw generator
- 50' - 30 amp shore power (port and starboard)
- Fresh-water washdown spigot
- Raw-water washdown spigot

Seating

- Folding stern bench seat
- Helm seat with armrest
- Forward lounge seating with storage and cushions
- Folding second row of seating at helm
- Bow seating

Additional Installed Options

- Underwater camera
- Garmin GHP corepack for Yamaha Helm Master®
- Garmin GMR 624 xHD2 marine radar
- CHIRP Transducers
- Garmin GPSMAP® 7616xsv Triple displays
- Garmin Upper station GPSMAP® 7608xsv Chart plotter
- Garmin Upper station VHF wired GHS10
- Garmin VHF 30i AIS, Black
- SiriusXM radio
- Sun shade
- Full Upper station: With Yamaha Helm Master system, sun-top, (4) drink holders, folding helm seat bolsters, stainless steel grab rail, glove box, stereo remote, space for electronics, folding gas shock assisted
- Everglades Awlgrip® paint in Caribbean Blue Metallic
- White Quad Engines

Исключения

При продаже яхты исключаются личные вещи владельца.

Отказ от ответственности

Компания предоставляет описание судна или яхты добросовестно, но не может гарантировать точность этой информации, а также не ручается за техническое состояние. Покупатель должен проинструктировать своих агентов или оценщиков исследовать представленную информацию более подробно, по собственному желанию. Продажа судна или яхты, изменение цены или снятие с продажи будет происходить без предварительного уведомления.

ФОТОГРАФИИ

Cabin Entrance



Cabin



Galley Area



Head



Bow Seating



Bow Seating



Bow Seating - Storage



Forward Console Seating



Storage



Storage



Workstation



Fishbox



Electrical Panel



Console Helm



Console Helm



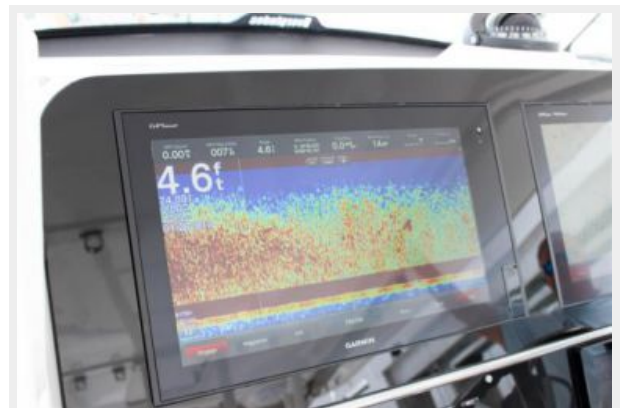
Console Helm Panel



Navigational Equipment



Navigational Equipment



Navigational Equipment



Console Helm



Console Helm



Console Helm Seating



Salty J's - Everglades 435cc



Salty J's - Engines



Salty J's



КОНТАКТЫ

Андрей Шестаков (Andrey Shestakov) – ведущий яхтенный брокер отдела продаж яхт и судов компании Shestakov Yacht Sales Inc. Официальный представитель Shestakov Yacht Sales Inc. для русскоговорящих клиентов в центральном офисе компании в Майами/Форт Лодердейл/Флорида/США.

Контактная информация

Email: andrey@shestakovyachtsales.com

Web: shestakovyachtsales.com

Телефоны

Краснодарский край: **+7(918)465-66-44**

США, Майами, Флорида: **+1(954)274-4435**

Время работы

Понедельник – Суббота: **9:00 - 21:00**
EDT

Воскресенье: **Закрето**

Адрес



Harbour Towne Marina, 850 NE 3rd St,
STE 213, Dania, FL 33004