

VARIANT — VALIANT



Builder: Valiant

Year Built: 1981

Model: Sloop

Price: PRICE ON APPLICATION

Location: United States

LOA: 40' 0" (12.19m)

Beam: 12' 4" (3.76m)

Max Draft: 6' 1" (1.85m)

Cruise Speed: 7 Kts. (8 MPH)

Max Speed: 8 Kts. (9 MPH)

Our experienced yacht broker, Andrey Shestakov, will help you choose and buy a yacht that best suits your needs **Variant — Valiant** from our catalogue. Presently, at Shestakov Yacht Sales Inc., we have a wide variety of yachts available on our sale's list. We also work in close contact with all the big yacht manufacturers from all over the world.

If you would like to buy a yacht **Variant — Valiant** or would like help answering any questions concerning purchasing, selling or chartering a yacht, please call **+1(954)274-4435**

TABLE OF CONTENTS

TABLE OF CONTENTS	2
SPECIFICATIONS	3
Overview	3
Basic Information	3
Dimensions	3
Speed, Capacities and Weight	4
Accommodations	4
Hull and Deck Information	4
Engine Information	4
PHOTOS	5
CONTACTS	9
Contact details	9
Telephones	9
Office hours	9
Address	9

SPECIFICATIONS

Overview

The Variant is hull #4 of the 10 Bob Perry designed Valiant 40 Bluewater Pilotheuses, built by Uniflite in Bellingham Washington. This rare sloop vessel is considered the deluxe version of the Valiant 40, the longest production sailing yacht made in history.

The Valiant was inducted into the American Sailboat Hall of Fame in 1997 and has won more both single- and double-handed trans-ocean races than any other boat made. She's swift, comfortable and forgiving, ready to cross an ocean or cruise the coastal Northwest waters in comfort. Complete piloting can be done from the salon making her the perfect year-round northwest cruiser. Dual helm stations protect you and your crew from the elements.

The accommodations rival those of much larger yachts, incorporating a spacious forward stateroom, large head with tub/shower, U-Shaped galley, large salon with L-Shaped settee, an inside helm, and generous storage.

With a bolted-on cruising fin keel, skeg-hung rudder, and a long waterline, which provides a minimum wetted surface area – this pilothouse model steers nicely off the wind. She has just enough weather helm when close hauled to give her a very solid “feel.” Stability is derived from her form, rather than from an excessively high ballast/displacement figure, giving this beautiful vessel an extremely smooth ride.

Recent new bottom paint with 2 epoxy barrier coats and 4 coats of micron-extra bottom paint is an example of excellent professional care this boat has seen through the years. This very special vessel is priced to sell and is not to be missed.

Basic Information

Category: Sloop

Sub Category: Pilothouse Cutter

Model Year: 1981

Year Built: 1981

Country: United States

Cockpit: Yes

Dimensions

LOA: 40' 0" (12.19m)

Beam: 12' 4" (3.76m)

Max Draft: 6' 1" (1.85m)

MFG Length: 39' 11" (12.17m)

Speed, Capacities and Weight

Cruise Speed: 7 Kts. (8 MPH)

Cruise Speed RPM: 2400 Kts.

Max Speed: 8 Kts. (9 MPH)

Displacement: 22500 Pounds

Water Capacity: 300 Gallons

Holding Tank: 40 Gallons

Fuel Capacity: 180 Gallons

Accommodations

Total Cabins: 1

Total Heads: 1

Hull and Deck Information

Hull Material: Fiberglass

Engine Information

Engines: 1

Manufacturer: Westerbeke

Model: 50

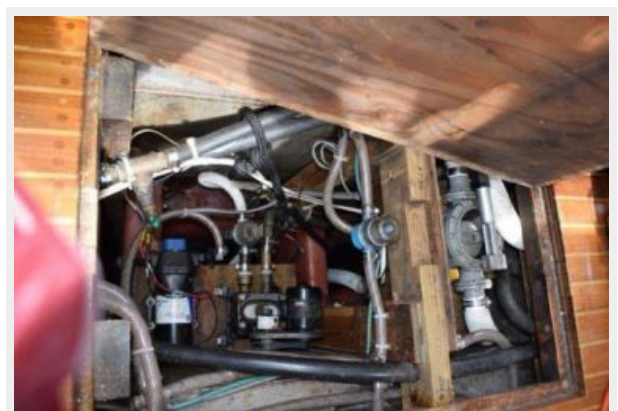
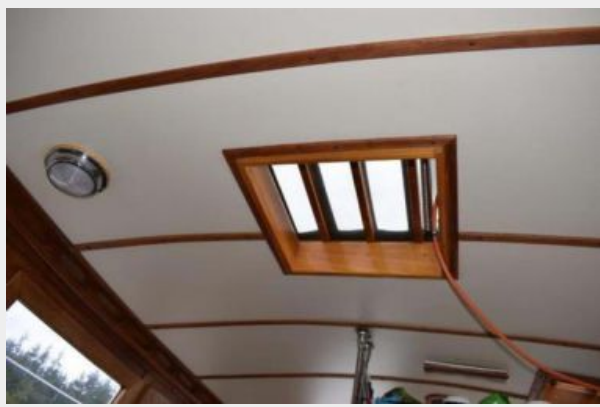
Engine Type: Inboard

Fuel Type: Diesel

PHOTOS









CONTACTS

Andrey Shestakov, leading yacht broker of the sales department of Shestakov Yacht Sales Inc. Shestakov Yacht Sales Inc., the official representative of the Miami/Fort Lauderdale FL headquarters.

Contact details

Email: andrey@shestakovyachtsales.com

Web: shestakovyachtsales.com/en/

Telephones

USA: +1(954)274-4435

Office hours

Monday – Saturday: **9:00 - 21:00** EDT

Sunday: **closed**

Address



Harbour Towne Marina, 850 NE 3rd St,
STE 213, Dania, FL 33004