

WE NATION — TIARA



Судостроитель: TIARA

Год постройки: 2014

Цена: **ЦЕНА ЯХТЫ ПО ЗАПРОСУ**

Местонахождение: United States

Длина общая: 58' 0" (17.68m)

Ширина: 15' 1" (4.60m)

Крейс. скорость: 29 Kts. (33 MPH)

Макс. скорость: 33.7 Kts. (39 MPH)

Купить **We Nation — TIARA** а также выбрать подходящую вам яхту из нашего каталога яхт вам поможет опытный яхтенный брокер Андрей Шестаков. На сегодняшний день компания **Shestakov Yacht Sales Inc.** имеет большое количество яхт в собственном списке продаж, а также тесно сотрудничает со всеми крупными яхтенными производителями по всему миру.

Для того чтобы купить яхту **We Nation — TIARA** а также проконсультироваться по любому вопросу связанному с покупкой, продажей, чартером яхт позвоните по телефону **+7(918)465-66-44**.

ОГЛАВЛЕНИЕ

ОГЛАВЛЕНИЕ	2
ХАРАКТЕРИСТИКИ	4
Обзор	4
Основная информация	4
Размеры	4
Скорость, вместимость и масса	5
Размещение	5
Корпус и палуба	5
Информация о двигателе	5
ПОДРОБНОЕ ОПИСАНИЕ	6
Salon	6
Galley	6
Master Stateroom	6
Master Head	7
Forward VIP Stateroom	7
Forward Starboard Guest Stateroom	8
Guest Head	8
Helm	8
Electronics	9
Electrical System	9
Mechanical Equipment	9
Engine Room	10
Aft Deck	10
Deck	10
Hull	11
Исключения	11
Отказ от ответственности	11
ФОТОГРАФИИ	12

КОНТАКТЫ	18
Контактная информация	18
Телефоны	18
Время работы	18
Адрес	18

ХАРАКТЕРИСТИКИ

Обзор

This 5800 Tiara is a MUST SEE!!! An incredible interior and exterior space is designed for comfortable cruising and relaxing. No expense has been spared on this yacht by this knowledgeable owner. She is extremely well equipped with SAT TV, underwater lights, color changing cockpit lights, electric cockpit sunshade, hydraulic swim platform, cockpit grill, Rolls Royce Titanium hull color etc. etc.

All service performed by dealer on time, all **new batteries** and **bottom job** in December of 2017.

Transferable Extended Volvo Penta ESC until October January 2020!!!

The Tiara 5800 Sovran is the flagship of the Tiara line from 2007 to 2015.

Don't Let This One Get Away.... Call today for a Private Showing!

Transferable Extended Passport Warranty until January 2020!!!

This Tiara 5800 Sovran is turn key and ready for it's new owner!

The Tiara 5800 Sovran is the flagship of the Tiara line from 2007 to 2015.

This is one of the last built, the knowledgeable owner has serviced the vessel with an open checkbook. The three stateroom layout provides sleeping for up to 7 people, in air conditioned comfort. The large Aft deck with the electric sun shade increases the livability and cruising comfort of this outstanding up-scale yacht.

Don't Let This One Get Away.... Call today for a Private Showing!

Основная информация

Подкатегория: Крейсер

Модельный год: 2014

Год постройки: 2014

Страна: United States

Размеры

Длина общая: 58' 0" (17.68m)

Ширина: 15' 1" (4.60m)

Скорость, вместимость и масса

Крейс. скорость: 29 Kts. (33 MPH)

Макс. скорость: 33.7 Kts. (39 MPH)

Водоизмещение: 43500 Pounds

Вместимость воды: 200 Gallons

Вместимость сточного бака: 80 Gallons

Объем топливного бака: 650 Gallons

Размещение

Всего кают: 3

Корпус и палуба

Материал корпуса: Fiberglass

Информация о двигателе

Двигатели: 3

Производитель: Volvo

Модель: IPS600

Тип двигателя: Inboard

Тип топлива: Diesel

ПОДРОБНОЕ ОПИСАНИЕ

Salon

The Salon is Large and Open with a L-Shaped Settee on the Starboard Side

- Stainless sliding glass entry doors
- L-shaped sofa ultra leather on starboard
- Salon table with storage
- Window shades
- Teak flooring
- Chair
- TV console with retractable TV
- Stereo entertainment system
- Reading lights
- SAT TV
- Salon Storage
- Overhead indirect lighting
- Accent lighting

Galley

- Sub- Zero refrigerator and freezer drawers
- Microwave convection oven
- Dual under mount stainless sinks with covers
- Quartz counter tops
- Storage drawers below counter top
- Teak flooring
- Cellar storage under galley floor
- 110V outlets
- Accent lighting
- Utility storage drawers
- Cherry wood cabinetry
- Below counter storage cabinet
- Indirect lighting
- Three burner stove with vent system
- Natural lighting
- Safety hand rail

Master Stateroom

Full Beam

- Double berth with deluxe mattress
- Bed cover and pillows package
- Portside dresser
- Safe
- Overhead lighting
- Cherry wood privacy door
- Indirect overhead lighting and reading lights
- SAT TV & DVD player
- Cedar lined hang up locker
- Large hullside windows with blinds
- Night tables with storage
- Large gas spring activated storage compartment under berth
- Stackable washer/dryer with storage

Master Head

- Vanity with quartz counter top/porcelain sink
- Lighted medicine cabinet with mirror
- Shower stall with glass door and teak seat
- Vacuflush head with holding tank
- Port light with privacy shade
- Indirect lighting
- Lower cabinet storage
- Exhaust fan
- Privacy door
- Linen storage
- Ceramic tile floor
- AC Vent
- 110V outlet

Forward VIP Stateroom

- Queen pedestal berth with storage
- Large cedar lined hanging locker
- Guest head entry door
- Leather port light shades
- Upper hull side storage
- Privacy door
- Teak flooring
- Reading lights
- TV/DVD player

- AC system

Forward Starboard Guest Stateroom

- Bunk berth's with storage
- TV
- Privacy door
- Locker storage

Guest Head

- Large shower stall with door / molded in seat
- Opening port light
- Indirect lighting
- Quartz counter top with porcelain vessel sink
- Lighted medicine cabinet with mirror
- Under vanity storage
- Ceramic tile flooring
- Vacuflush head
- Privacy door
- Exhaust fan
- AC vent

Helm

- Leather wrapped tilt captain's wheel
- Starboard electric window
- Glove box storage
- (2) Stidd power helm seats with arm rest
- Sky galley with Vitrifrigo refrigerator drawer
- Garmin glass cockpit navigation
- Wine cooler
- Denon stereo system
- Volvo engine display/controls/joystick
- Teak flooring
- Drink holders
- Indirect lighting
- Window tinting
- Windshield cover
- Night cockpit lighting

Electronics

- 3 Garmin navigation displays
- Garmin open array radar system
- Garmin depth finder system
- Garmin autopilot system
- Garmin GHS 10 VHF
- TracVision SAT TV system
- Stereo system with sound bar and blue ray player
- Tiara command station touchscreen display
- Ritchie Globemaster compass
- Cable TV and phone outlets
- Volvo electronic controls and steering system
- Volvo keyless ignition system

Electrical System

- Tiara custom electrical distribution panel
- 17kW generator (**630 hours**)
- Glendinning 50 Amp electrical shore power system
- 2-30 Amp shore power cords
- Cable TV hook-up
- (2) Victron battery chargers 100 amp
- Battery switches
- Battery bank system
- Battery parallel system
- Electrical bonding system
- ACR RCL 100 remote spotlight
- High capacity alternators
- Air horn system
- 3 Telephone outlets
- Central vacuum system
- 2 Hot water heaters
- 120V Electrical outlets
- 12V lighting systems

Mechanical Equipment

- Trim tab system
- Power steering system
- Windlass anchor system with forward foot switches
- Chain rode with fresh and raw water washdown

- Waste macerator system with pump-out
- Oil change system
- Glendinning cable master system
- Fresh Water System with Updated pressure water system- 110V
- 12V Pressure water back-up system

Engine Room

- Engine room lighting
- Engine room sound insulation
- Engine strainers
- Air conditioning strainer
- Oil change system
- Engine room acoustical insulation
- Generator with sound shield
- Automatic fire suppression system
- Engine room blowers
- Fuel filters
- Raw water intake strainers
- Bilge pumps
- Glendinning cable master systems

Aft Deck

- Engine room access
- Transom door
- Electric Sun shade
- High gloss cockpit teak table with hi-lo actuator
- Hydraulic swim platform with ladder
- Molded in Aft deck steps
- Large Aft deck seating with storage
- Courtesy lights
- Starboard bar with grill and refrigerator
- Portside dry sink with Aft docking joystick and ice maker
- Custom table cover
- Cockpit seat covers
- Aft storage trunk

Deck

- Tiara custom non-skid surface

- 316L stainless steel bow railing
- Forward anchor storage locker
- Hand rails
- Custom bow sun pad with cup holders and cover
- Pop-up cleats
- 3 forward deck hatches with screens and sun shade
- Molded-in bow pulpit with stainless steel roller system

Hull

- Imron hull paint Rolls Royce Titanium
- Hydraulic swim platform with teak decking
- Single piece stainless bow rail
- Bronze seacocks
- Transom shower
- Composite fuel tank
- Molding-in recessed port lights
- Underwater lights
- Wood and foam core stringers
- Anti-fouling bottom paint
- Bow anchor system
- Hardtop with mast
- Raw and fresh water washdown for anchor
- Automatic bilge pumps

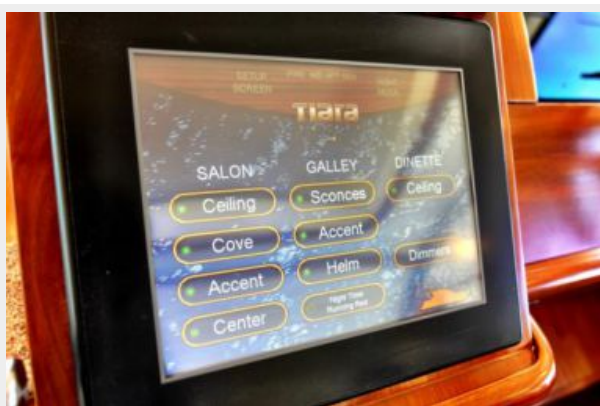
Исключения

При продаже яхты исключаются личные вещи владельца.

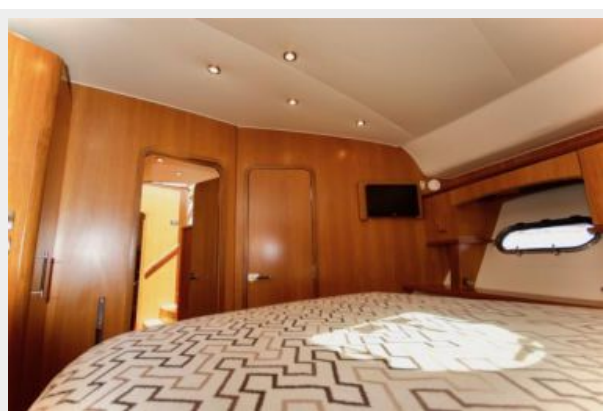
Отказ от ответственности

Компания предоставляет описание судна или яхты добросовестно, но не может гарантировать точность этой информации, а также не ручается за техническое состояние. Покупатель должен проинструктировать своих агентов или оценщиков исследовать представленную информацию более подробно, по собственному желанию. Продажа судна или яхты, изменение цены или снятие с продажи будет происходить без предварительного уведомления.

ФОТОГРАФИИ













КОНТАКТЫ

Андрей Шестаков (Andrey Shestakov) – ведущий яхтенный брокер отдела продаж яхт и судов компании Shestakov Yacht Sales Inc. Официальный представитель Shestakov Yacht Sales Inc. для русскоговорящих клиентов в центральном офисе компании в Майами/Форт Лодердейл/Флорида/США.

Контактная информация

Email: andrey@shestakovyachtsales.com

Web: shestakovyachtsales.com

Телефоны

Краснодарский край: **+7(918)465-66-44**

США, Майами, Флорида: **+1(954)274-4435**

Время работы

Понедельник – Суббота: **9:00 - 21:00**
EDT

Воскресенье: **Закрито**

Адрес



Harbour Towne Marina, 850 NE 3rd St,
STE 213, Dania, FL 33004