

TRUE NORTH — BROWARD



Судостроитель: BROWARD

Год постройки: 2001

Модель: Моторная яхта

Цена: **ЦЕНА ЯХТЫ ПО ЗАПРОСУ**

Местонахождение: Cayman Islands

Длина общая: 118' 0" (35.97m)

Ширина: 23' 0" (7.01m)

Макс. осадка: 6' 3" (1.91m)

Крейс. скорость: 14 Kts. (16 MPH)

Макс. скорость: 17 Kts. (20 MPH)

Купить True North — BROWARD а также выбрать подходящую вам яхту из нашего каталога яхт вам поможет опытный яхтенный брокер Андрей Шестаков. На сегодняшний день компания Shestakov Yacht Sales Inc. имеет большое количество яхт в собственном списке продаж, а также тесно сотрудничает со всеми крупными яхтенными производителями по всему миру.

Для того чтобы купить яхту True North — BROWARD а также проконсультироваться по любому вопросу связанному с покупкой, продажей, чартером яхт позвоните по телефону **+7(918)465-66-44**.

ОГЛАВЛЕНИЕ

ОГЛАВЛЕНИЕ	2
ХАРАКТЕРИСТИКИ	6
Обзор	6
Основная информация	6
Размеры	6
Скорость, вместимость и масса	6
Размещение	6
Корпус и палуба	6
ПОДРОБНОЕ ОПИСАНИЕ	7
Main Description	7
Accommodations	7
Galley	8
Salon	9
Master Stateroom	9
Guest Staterooms	9
Deck	10
Helm and Electronics	12
Electrical	13
Fire and Safety	13
Engine and Mechanical	13
Mechanical Disclaimer	14
Disclaimer	14
Исключения	15
Отказ от ответственности	15
ФОТОГРАФИИ	16
Profile	16
Starboard Profile	16
Port Side	16

Flybridge	16
Wheelhouse	16
Salon Bar	16
Salon Entertainment	17
Salon Forward	17
Salon to Aft	17
Formal Dining	17
To Master Stateroom	17
Master Stateroom	17
Master Stateroom	18
Master Stateroom	18
Master Stateroom	18
Master Stateroom Bath	18
2nd Guest Stateroom	18
Aft Guest Suite	18
Day Head Sink	19
Day Head	19
Guest Stateroom	19
Guest Stateroom	19
Guest Stateroom	19
Guest Stateroom Bath	19
Guest Stateroom Shower	20
Crew Quarters	20
Hallway	20
Helm	20
Helm Console	20
Cockpit	20
Main Helm Console	21
Aft Teak Deck Seating	21

Main Deck Aft	21
Stairs to Flybridge	21
Flybridge Dinette	21
Flybridge Looking Aft	21
Flybridge Seating	22
Flybridge to Aft	22
Flybridge to Port	22
Flybridge to Starboard	22
Flybridge Wet Bar	22
Flybridge Console to Port	22
Flybridge Console to Starboard	23
Flybridge Garmin GPS	23
Furuno Radar	23
Furuno Radar	23
Companionway	23
Foredeck	23
Windlass	24
Anchor Locker	24
Compass	24
Hull	24
Port Sidedeck	24
Starboard Sidedeck	24
Pulpit	25
Radar	25
Engine Room	25
Engine Room	25
Engine Room	25
Engine Room	25
Engine Room	26

Starboard Engine	26
Port Engine	26
Life Raft	26
Swimming Platform	26
Transom Door	26
SeaDoo	27
Dinghy Davit	27
Dinghy	27
Dinghy Motor	27
NEW TOP DECK AWNING 2021	27
Stern View	27
NEW TOP DECK AWNING 2021	28
КОНТАКТЫ	29
Контактная информация	29
Телефоны	29
Время работы	29
Адрес	29

ХАРАКТЕРИСТИКИ

Обзор

This gorgeous classic traditional Broward is now offered for sale well below surveyed value.

Основная информация

Тип судна: Моторная яхта

Модельный год: 2001

Год постройки: 2001

Страна: Cayman Islands

Открытая палуба мостика: Да

Кубрик: Да

Размеры

Длина общая: 118' 0" (35.97m)

Длина по ватерлинии: 104' 0" (31.70m)

Ширина: 23' 0" (7.01m)

Макс. осадка: 6' 3" (1.91m)

Скорость, вместимость и масса

Крейс. скорость: 14 Kts. (16 MPH)

Макс. скорость: 17 Kts. (20 MPH)

Вместимость воды: 620 Gallons

Вместимость сточного бака: 620 Gallons

Объем топливного бака: 11000 Gallons

Размещение

Всего кают: 4

Всего ком. состава: 8

Корпус и палуба

Материал корпуса: Aluminum

ПОДРОБНОЕ ОПИСАНИЕ

Main Description

MAJOR PRICE REDUCTION (Previously Priced at \$2,495,000)!

This gorgeous classic traditional Broward is now offered for sale well below surveyed value.

The maintenance log and 2015 survey are available for review. Engine overhaul in 2015 with detailed records. Corporate owned, the Board is ready to sell this outstanding Broward Yacht.

This yacht comfortably accommodates 8 people in 4 luxurious staterooms plus 5 crew in 3 cabins. The interior features a rich mahogany finish throughout complimented by a spacious thoughtfully designed interior. The main deck features a gracious salon with full bar and entertainment center. Forward the main salon is the formal dining area. The large aft deck with walk up bar and a convenient galley forward complete the main deck.

Lower deck forward are 3 crew cabins with the Captain's cabin forward in the bow plus 2 additional cabins directly aft. The full beam master stateroom suite is midship with a twin guest stateroom aft to port and 2 queen guest staterooms to port and starboard further aft.

The flybridge can be accessed from either the raised pilothouse or the aft deck spiral staircase. The flybridge features a main helm station to port. Aft the helm is a full bar to starboard and a large table with settee to port.

NEW TOP DECK AWNING 2021

Accommodations

4 STATEROOMS + 2 CREW, 6 HEADS + 2 CREW, MAPLE INTERIOR FINISH, CARPETS THROUGHOUT WITH WOOD IN GALLEY AND PILOTHOUSE, DINETTE MAIN DECK FORWARD OF SALON + AFT DECK TABLES, SEVEN SHOWERS + DECK SHOWER, GYM

FORMAL DINING:

- Large Dining Table with Eight Ornate Chairs
- Lockers and Storage Built-in to Outboard Bulkhead
- Pass Thru' Forward to Starboard to Access Galley and Crew Area
- Wine Chiller Installed in Cabinet Forward to Starboard

COMPANIONWAYS:

Day head to port with toilet forward, marble tiles and countertop, mirrored wall panels, access to doghouse and entertainment equipment locker, stairwells to starboard to access pilothouse and

lower guest accommodations, doors to port and starboard for access to side decks and boarding gates, access forward for the Formal dining, galley and crew accommodation.

LAUNDRY:

- Located at Bottom of Guest Stairs in Hidden Enclave
- Washer Dryer with Good Storage on Shelves

CREW AREA:

This area is accessed from the galley stairwell and comprises of three crew cabins and a laundry space. Forward to starboard is the Captains' cabin, with a large bed outboard to starboard and a TV mounted on the forward bulkhead. Inboard to port and forward is the bathroom with head and separate stall shower. Aft of the Captains' cabin to port is the large shared bathroom with head and separate stall shower. Aft are the two crew cabins which are mirror images of each other and come with upper and lower bunks and good storage in lockers and drawers.

The GYM is accessed from the watertight hatch on the transom and comes with a large fridge and freezer installed aft to starboard. There is good storage to port and starboard in built-in cabinetry. The day head is forward to starboard and comes with a toilet, sink and separate stall shower. The gym equipment is installed in the center of the space with the engine room entrance forward on the centerline.

Galley

Located Port Forward:

- Dacor, Double Oven
- Dacor Five Burner Electric Stove Top
- Two Burner Electric Kenyon BBQ On Flybridge
- Panasonic Microwave
- Subzero Side-By-Side Refrigerator
- U-Line Wine Chiller in Formal Dining
- Frigidaire Refrigerator in Gym
- Frigidaire Freezer in Gym
- Subzero Fridge at Salon Bar
- Ice-Maker in Main Freezer + Scotsman At Salon Bar
- 2 X 28 Gallon, Electric "American Proline" Hot Water Heater
- 800 Gpd, Village Marine Tec Water Maker
- Maytag Stack Unit Washer/Dryer in Crew + Avanti 2 Piece in Guest Foyer
- Frigidaire Dishwasher
- General Electric Compactor
- Granite Counter
- Wood Flooring
- Central Island with Stovetop

- Dinette Forward with Wrap Around Seating and Table
- Stairs to Crew Accommodations Forward to Starboard

Salon

- Maple Wood Paneling
- Vinyl Overhead
- Large Wet-Bar Aft to Port with Sink
- Fridge and Ice Maker
- 3 Bar Stools at Wet Bar
- 3 Sofas on Centerline with Coffee Table Between
- End Tables and Credenza Aft of Sofa Seating
- TV Mounted on Forward Bulkhead
- 2 Upholstered Chairs Forward
- Table Aft to Starboard with Four Upholstered Chairs
- Good Storage in Cabinets to Port and Starboard
- Entertainment System in Doghouse on Port Side

Master Stateroom

- Forward on Lower Deck
- Large Walk-in Closet Aft to Starboard
- Upholstered Panels Over Head with Recessed Soffits Over Bed
- Excellent Storage in Lockers and Drawers
- Queen Size Bed on The Centerline
- TV Installed in Cabinet Aft of Bed
- Upholstered Headboard
- Large Vanity Desk with Seat to Port
- Entrances to Full Beam His/Her Bathroom Forward to Port and Starboard
- Master Bathroom with Marble Counter Tops
- Mirrored Vanity
- Toilets to Port and Starboard Outboard
- Seamless Glass Shower Enclosure on Centerline

Guest Staterooms

PORT MID STATEROOM:

- Maple Bulkheads
- Vinyl Overhead
- Good Storage in Lockers and Drawers

- Twin Side-By-Side Single Beds with Storage Below
- TV Mounted Aft
- Hanging Locker Outboard Aft
- Bathroom Forward with Mirrored Vanity
- One Porthole
- Marble Countertops
- Toilet and Sink
- Separate Stall Shower

PORT AFT STATEROOM:

- Aft on Lower Deck
- Excellent Storage in Lockers and Drawers
- Queen Size Bed Outboard
- TV Installed in Cabinet Inboard of Bed
- Upholstered Headboard
- Entrance to Bathroom Is Aft
- Built-in End Tables
- Bathroom with Marble Counter Tops
- Mirrored Vanity
- Toilet and Sink
- Glass Shower Enclosure

STARBOARD AFT STATEROOMS (2):

- Aft on Lower Deck
- Excellent Storage in Lockers and Drawers
- Queen Size Bed Outboard
- TV Installed in Cabinet Inboard of Bed
- Upholstered Headboard
- Entrance to Bathroom Is Aft
- Built-in End Tables
- Bathroom with Marble Counter Tops
- Mirrored Vanity
- Toilet and Sink
- Glass Shower Enclosure

Deck

FLYBRIDGE:

Additional engine controls starboard wing station, refrigerator Frigidaire wine cooler, ice-maker u-line, radar arch, hard top overhand at aft deck, white bimini with aluminum frame, Helm station forward to port, wing station controls to starboard, stairs to aft deck, aft to starboard, hatch forward

on centerline to access pilothouse, dinghy installed aft on the centerline, wave runner installed aft to port, davit installed aft to port, "U" shaped wet-bar forward to starboard with sink, wine chiller and icemaker, 3 built in stainless steel bar stools, BBQ installed at wet bar, wrap around bench style seating installed aft of helm, 2 large "L" shaped seating areas aft to port and starboard, life rafts installed to port and starboard aft of seating area, Bimini top protection over forward part of flybridge.

RAISED PILOTHOUSE:

Aft to port is raised "L" shaped bench seating with table in front, helm on centerline, storage in step drawers and below seating, safety equipment stored above port lockers, stairwell to starboard to access guest areas and galley.

DECK:

- Eight Large + 4 Ball Type Fenders
- Eight Dacron and Three Strand Nylon Docking Lines
- Two Traditional Type with 300' Chain Ground Tackle
- Two Maxwell, Vertical Hydraulic Anchor Windlass
- Two Maxwell On Port and Starboard Aft Deck Winches
- 2,500 Lb. Steel with Hydraulic Winch and Full Functions Dinghy Davit
- Aluminum "Marquipt" Gangway
- 18' Apex Dinghy with Yamaha 90 Hp Model #: F90bet Outboard Motor
- Sea-Doo GTI 4-Tec Wave Runner

EXTERIOR, AFT DECK AND SWIM PLATFORM:

- Built-in bench seating aft with cushions and canvas covers
- Port and starboard deck winches
- A large table in front of the seating
- Escape hatch from engine room forward to starboard
- Large door forward to access salon
- Two stainless steel cleats with fairleads
- Stairwell forward to starboard to access flybridge
- Teak decks
- Stairway forward to port for flybridge access
- Life rings installed to port and starboard
- Swim Platform with a Watertight door on the transom to access the machinery space and gym
- Two aluminum cleats with fairleads
- Stainless steel safety rails aft
- Shore power cords in lockers to port and starboard
- Nonskid decks
- Port and starboard stairways with teak over

SIDE AND FORE DECKS:

- Side gates to port and starboard
- Raised gun-whales
- Two cleats with fairleads to port and starboard
- Built in seating centerline on the foredeck
- Two Maxwell anchor windlasses with a bell mounted forward
- Bosuns' locker in the brow
- Two cleats with fairleads on the foredeck
- Deck hatch forward for chain locker access
- Entry doors on port and starboard side decks

Helm and Electronics

LOWER STATION:

- 6" Whitestar + Furuno Sat Compass
- Anschütz Gyro Repeater
- Anschütz Pilotstar D Autopilot
- Two X Furuno Radar
- Northstar 952x GPS
- Samsung Monitor with Nobeltec Chart Plotter
- Icom Ic-M604 VHF
- 7 X Uniden Handheld VHF's
- Sea235 SSB
- Seahail Loudhailer
- Two X Kvh TracPhone Sat Phones
- B&G 20/20 Depth Finder
- B&G 20/20 + GPS Speed Log
- Brookes and Gatehouse Wind Meter
- Samsung TV's On Aft Deck, Salon, Guest Cabins and Capt. Cabin
- Sharp TV with Sony DVD Player in Dinette
- LG TV's In Two Aft Crew Cabins
- Smart TV System with Streaming Movies/Music to All TV's
- Throughout Vessel, SeaTel Sat TV, Bose Surround Sound Receivers In Salon and Master Stateroom

UPPER STATION:

- 4" Ritchie Electronic Compass
- Anschütz Pilotstar D Autopilot
- Furuno Radar
- Garmin Gpsmap 820XS GPS
- Westmarine VHF 680
- B&G Hydra Depth Finder
- B&G Hydra + Gps Speed Log

Electrical

- 12 Volt Charger 40 Amp Dolphin
- 24 Volt Charger 30 Amp Dolphin
- 24 Volt Charger 50 Amp Dolphin
- DC Converter
- Two X Acme Shore Transformers
- 3 X 12 Volt 8d Outboard and Aft of Port Engine Batteries
- 2 X 12 Volt 8d Outboard and Aft of Starboard Engine Batteries
- 2 X 12 Volt 8d In Doghouse Batteries
- 24 Volt Dc and 110 Volt Ac Lights
- Four X 100 Amp 250 Volt Shore Receptacles
- Three X 250 Volt X 75 Ft 100 Amp Cables
- Aqua Air Chilled Water System with Three Compressors Air Conditioning System
- Twin Station Hydraulic Steering Gear

Fire and Safety

- Nine, 2.5 Lb + Five, 5 Lb Dry Powder and One 10 Kg Co2 Hand Extinguishers
- Two X 138 Lb Co2 Bottles in Engine Room
- Manual Release in Pilothouse
- Vent Fans
- Vent Flaps
- Main Engines and Each Generator, Gas Powered Crash Pump with Hose and Nozzle In Gym
- 24 Volt and 110 Volt Electric Bilge Pumps
- Suctions on Each Main Engine Seawater Pick Up
- Lifejackets
- Three Life Rings, One with Floating Throw Line
- Two X Six Man "Elliot" Life Rafts
- Two EPIRB X "ACR", Battery Good Through 5/2019
- Spreader Lights Two Aft Facing on Boat Deck

Engine and Mechanical

ENGINE LOCATION:

- Midships, Below Salon Sole
- 2 X Caterpillar Diesel 3412, 1400 Hp Each, R.P.M. 2300
- # Cylinders: Twelve, Overhauled November 2013
- Fuel Pump:
- Mechanical + Electrical Transfer Pumps + Manual Priming Pump

FILTERS:

- Triple Racor Bowls In-Line with Bowl on Engines

PROPELLERS:

- Five Blade, Bronze
- Propeller Shafts Stainless Steel, 4 1/4" Diameter
- Rudder Spade Type, 42" X 17"

BOW THRUSTER:

- "ABT" Hydraulic, Twin Propeller In 16" Tube

STABILIZERS:

- Naiad, Hydraulic With 35" X 50" Fins

ZF TRANSMISSIONS MODEL:

- BW 195A Reduction Ratio: 2.448:1

GENERATOR:

- 2 X Northern Lights Generators Model #: MP668QT/50KW Port Generator Hours 1,564; Starboard Generator Hours 10,653

MACHINERY SPACE:

This area is accessed from the watertight transom door via the gymnasium. There is full standing headroom with excellent access to all the machinery to carry out all service work.

Mechanical Disclaimer

Engine hours are as of the date of the original listing and are a representation of what the listing broker is told by the owner and/or actual reading of the engine hour meters. The broker cannot guarantee the true hours. It is the responsibility of the purchaser and/or his agent to verify engine hours, warranties implied or otherwise and major overhauls as well as all other representations noted on the listing brochure.

Disclaimer

The company offers the details of this vessel in good faith but cannot guarantee or warrant the accuracy of this information nor warrant the condition of the vessel. A buyer should instruct his agents, or his surveyors, to investigate such details as the buyer desires validated. This vessel is offered subject to prior sale, price change or withdrawal without notice.

Исключения

При продаже яхты исключаются личные вещи владельца.

Отказ от ответственности

Компания предоставляет описание судна или яхты добросовестно, но не может гарантировать точность этой информации, а также не ручается за техническое состояние. Покупатель должен проинструктировать своих агентов или оценщиков исследовать представленную информацию более подробно, по собственному желанию. Продажа судна или яхты, изменение цены или снятие с продажи будет происходить без предварительного уведомления.

ФОТОГРАФИИ

Profile



Starboard Profile



Port Side



Flybridge



Wheelhouse



Salon Bar



Salon Entertainment



Salon Forward



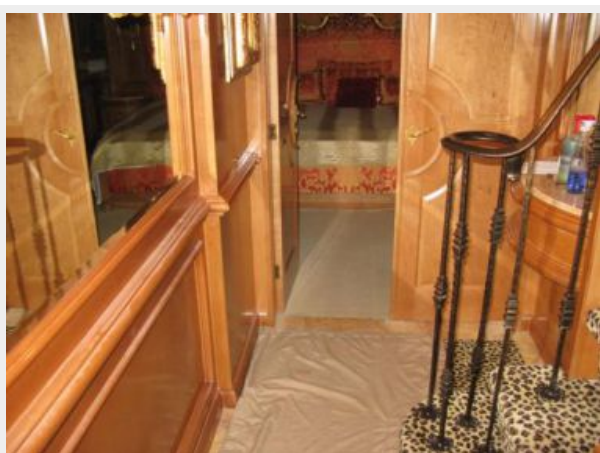
Salon to Aft



Formal Dining



To Master Stateroom



Master Stateroom



Master Stateroom



Master Stateroom



Master Stateroom



Master Stateroom Bath



2nd Guest Stateroom



Aft Guest Suite



Day Head Sink



Day Head



Guest Stateroom



Guest Stateroom



Guest Stateroom



Guest Stateroom Bath



Guest Stateroom Shower



Crew Quarters



Hallway



Helm



Helm Console



Cockpit



Main Helm Console



Aft Teak Deck Seating



Main Deck Aft



Stairs to Flybridge



Flybridge Dinette



Flybridge Looking Aft



Flybridge Seating



Flybridge to Aft



Flybridge to Port



Flybridge to Starboard



Flybridge Wet Bar



Flybridge Console to Port



Flybridge Console to Starboard



Flybridge Garmin GPS



Furuno Radar



Furuno Radar



Companionway



Foredeck



Windlass



Anchor Locker



Compass



Hull



Port Sidedeck



Starboard Sidedeck



Pulpit



Radar



Engine Room



Engine Room



Engine Room



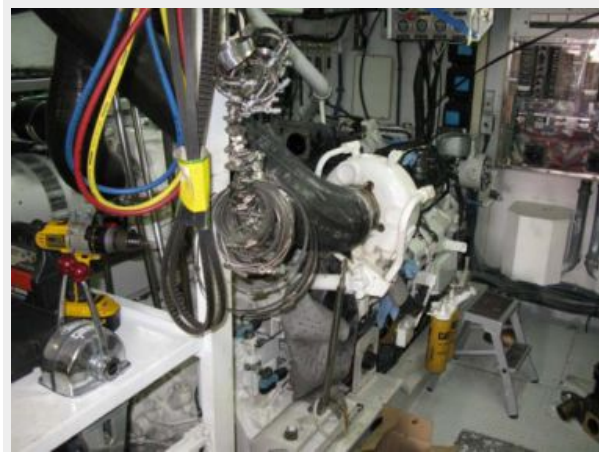
Engine Room



Engine Room



Starboard Engine



Port Engine



Life Raft



Swimming Platform



Transom Door



SeaDoo



Dinghy Davit



Dinghy



Dinghy Motor



NEW TOP DECK AWNING 2021

Stern View



NEW TOP DECK AWNING 2021



КОНТАКТЫ

Андрей Шестаков (Andrey Shestakov) – ведущий яхтенный брокер отдела продаж яхт и судов компании Shestakov Yacht Sales Inc. Официальный представитель Shestakov Yacht Sales Inc. для русскоговорящих клиентов в центральном офисе компании в Майами/Форт Лодердейл/Флорида/США.

Контактная информация

Email: andrey@shestakovyachtsales.com

Web: shestakovyachtsales.com

Телефоны

Краснодарский край: **+7(918)465-66-44**

США, Майами, Флорида: **+1(954)274-4435**

Время работы

Понедельник – Суббота: **9:00 - 21:00**
EDT

Воскресенье: **Закрето**

Адрес



Harbour Towne Marina, 850 NE 3rd St,
STE 213, Dania, FL 33004