

ELEONORA — VAN DER GRAAF B.V.



Builder: VAN DER GRAAF B.V.

Year Built: 2000

Model: Classic Yacht

Price: PRICE ON APPLICATION

Location: Antigua and Barbuda

LOA: 162' 5" (49.50m)

Beam: 26' 8" (8.11m)

Max Draft: 17' 1" (5.20m)

Our experienced yacht broker, Andrey Shestakov, will help you choose and buy a yacht that best suits your needs **ELEONORA — VAN DER GRAAF B.V.** from our catalogue. Presently, at Shestakov Yacht Sales Inc., we have a wide variety of yachts available on our sale's list. We also work in close contact with all the big yacht manufacturers from all over the world.

If you would like to buy a yacht **ELEONORA — VAN DER GRAAF B.V.** or would like help answering any questions concerning purchasing, selling or chartering a yacht, please call **+1(954)274-4435**

TABLE OF CONTENTS

TABLE OF CONTENTS	2
SPECIFICATIONS	3
Overview	3
Basic Information	3
Dimensions	3
Accommodations	3
Hull and Deck Information	4
Engine Information	4
PHOTOS	5
CONTACTS	6
Contact details	6
Telephones	6
Office hours	6
Address	6

SPECIFICATIONS

Overview

Eleonora not only follows Westward's heritage of big schooner racing but also offers, with her comfort and space, an unforgettable cruising and relaxing experience. Eleonora was built at the Van der Graaf shipyard in Holland and was launched in March 2000. Since then, she has successfully participated in a number of classic sailing regattas and hosted on board a number of high profile guests during her charter activities. Eleonora shows astonishing beauty under sail, her slender hull cutting a pathway through the sea in an elegant combination of beauty and power. Over one hundred years after the launch of Westward, we are again able to appreciate the awesome majesty and grandeur of this superb classic sailing yacht underway, sails filled as she surges forward, her white wake streaming behind. With no sacrifice to luxurious standards of comfort, her staterooms and the entire interior display the ambience and elegance of another age.

Basic Information

Category: Classic Yacht

Model Year: 2000

Year Built: 2000

Refit Year: 2008

Country: Antigua and Barbuda

Dimensions

LOA: 162' 5" (49.50m)

LWL: 96' 2" (29.30m)

LOD: 136' 2" (41.50m)

Beam: 26' 8" (8.11m)

Max Draft: 17' 1" (5.20m)

Accommodations

Total Cabins: 4

Hull and Deck Information

Hull Material: Steel

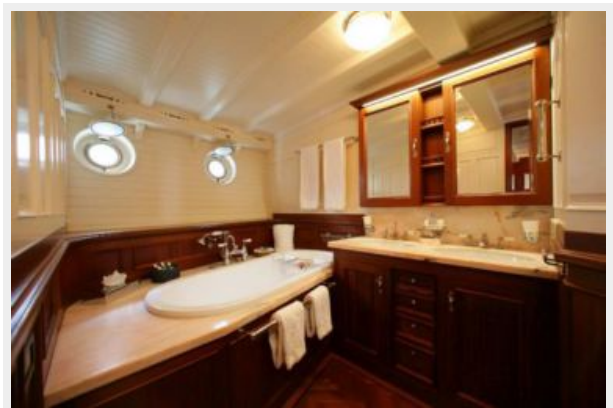
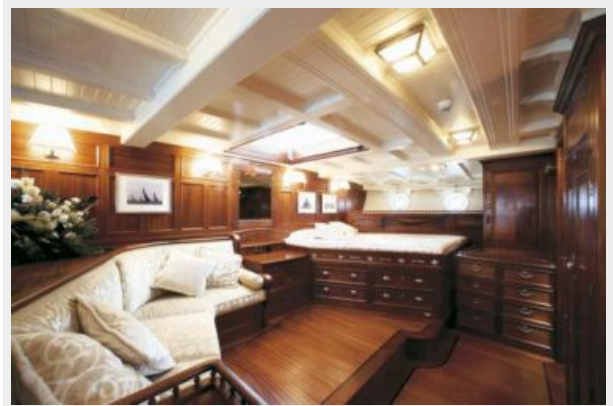
Engine Information

Engines: 1

Manufacturer: Baudoin

Model: 6R124SR

PHOTOS



CONTACTS

Andrey Shestakov, leading yacht broker of the sales department of Shestakov Yacht Sales Inc. Shestakov Yacht Sales Inc., the official representative of the Miami/Fort Lauderdale FL headquarters.

Contact details

Email: andrey@shestakovyachtsales.com

Web: shestakovyachtsales.com/en/

Telephones

USA: +1(954)274-4435

Office hours

Monday – Saturday: **9:00 - 21:00** EDT

Sunday: **closed**

Address



Harbour Towne Marina, 850 NE 3rd St,
STE 213, Dania, FL 33004