

ENDLESS SUMMER — HATTERAS



Судостроитель: HATTERAS

Год постройки: 2008

Модель: Моторная яхта

Цена: **ЦЕНА ЯХТЫ ПО ЗАПРОСУ**

Местонахождение: United States

Длина общая: 72' 0" (21.95m)

Ширина: 20' 2" (6.15m)

Макс. осадка: 5' 4" (1.63m)

Крейс. скорость: 23 Kts. (26 MPH)

Макс. скорость: 25 Kts. (29 MPH)

Купить **ENDLESS SUMMER — HATTERAS** а также выбрать подходящую вам яхту из нашего каталога яхт вам поможет опытный яхтенный брокер Андрей Шестаков. На сегодняшний день компания **Shestakov Yacht Sales Inc.** имеет большое количество яхт в собственном списке продаж, а также тесно сотрудничает со всеми крупными яхтенными производителями по всему миру.

Для того чтобы купить яхту **ENDLESS SUMMER — HATTERAS** а также проконсультироваться по любому вопросу связанному с покупкой, продажей, чартером яхт позвоните по телефону **+7(918)465-66-44**.

ОГЛАВЛЕНИЕ

ОГЛАВЛЕНИЕ	2
ХАРАКТЕРИСТИКИ	7
Обзор	7
Основная информация	8
Размеры	8
Скорость, вместимость и масса	8
Размещение	8
Корпус и палуба	8
Информация о двигателе	8
ПОДРОБНОЕ ОПИСАНИЕ	9
Significant Options	9
Arrangement Description	9
Aft Deck Custom Features:	9
Salon	10
Sunken Bar Features:	10
Day Head	11
Galley	11
Master Stateroom	12
Master Head: His & Her Arrangement	13
Port Stateroom / Office:	13
Port Head	14
Starboard Stateroom	14
Bow Stateroom	14
Bow Head	14
Navigation Electronics	14
Bridge Features	15
Helm Features	15
Aft Stateroom VIP / CREW:	16

Engine Room	16
Electrical Upgrades	16
Foredeck	16
Wood and Finish	16
Color	17
Audio & Visual	17
Additional Electronics	17
Exclusions	17
Disclaimer	17
Engine Warranty	17
Исключения	17
Отказ от ответственности	18
ФОТОГРАФИИ	19
Profile	19
General Arrangement	19
Aft deck	19
Aft deck	19
Stairs	19
Aft deck	19
Sunpad	20
Sunpad	20
Sunpad	20
Bow	20
Bow	20
Bow	20
Flybridge	21
Flybridge	21
Flybridge	21
Flybridge	21

Flybridge	21
Flybridge	21
Flybridge	22
Flybridge seating	22
Seating	22
Storage	22
Helm	23
Helm	23
Helm	23
Helm	23
Helm	23
Helm	23
Electronics	23
Electronics	24
Crew quarters	24
Crew quarters	24
Crew quarters	24
Head	25
Custom office	25
Custom office	25
Custom office	25
Forward head	26
Custom office	26
Forward head	26
Forward stateroom	26
Forward stateroom	27
Forward stateroom	27
Forward stateroom	27
Forward stateroom	27
Galley	28

Forward stateroom	28
Gues head	28
Guest head	28
Guest stateroom	29
Guest stateroom	29
Guest stateroom	29
Washer dryer	29
Master stateroom	29
Master stateroom	29
Master stateroom	30
Master stateroom	30
Master stateroom	30
Master stateroom	30
Master stateroom	30
Master stateroom	31
Master stateroom	31
Side	31
Side	31
Salon	32
Salon	32
Salon	32
Salon seating	32
Salon seating	32
Salon seating	32
Salon seating	33
Salon seating	33
Engine room	33
Engine room	33
Engine room	33
Engine room	33

Engine room	34
Engine room	34
Engine room	34
Engine room	34
Engine room	34
КОНТАКТЫ	35
Контактная информация	35
Телефоны	35
Время работы	35
Адрес	35

ХАРАКТЕРИСТИКИ

Обзор

The 72 Hatteras Motor Yacht "**Endless Summer**" features traditional exterior lines with subtle contemporary styling cues for an overall effect that fits into today's marketplace while easily standing the test of time. This unique model features a wider salon than comparable motor yachts on the market, yet it still retains side-deck access that makes the 72 Motor Yacht perfect for the owner/operator.

Down below, **Endless Summer** boasts a full-beam master stateroom with the his-and-hers head option, along with two luxurious guest rooms - and a custom built study.

A clever aft arrangement can be used as either a crew area or as a fourth guest room, creating a truly unique vessel in its size range.

Endless Summer features a resin-infused hull, rather than one built up of layers of hand-laid fiberglass. The automated resin-infusion process produces a more uniform hull thickness from one hull to the next, as well as the most ideal glass-to-resin ratio. This one-two punch produces a boat that weighs significantly less because of the lowered resin content, while providing a more precise fit of bulkheads, stringers and other components for increased strength and durability. In the salon, a large settee with chaise lounge offers storage and seating, along with a comfortable view of the 42-inch plasma TV, which is perfectly angled toward the sofa. A formal dining table to port seats six comfortably. One step up to the galley, features a day head to starboard.

Forward of the galley, you will find a large, country kitchen-style dinette with stone countertop for casual dining. For easy access to and from the boat, the **Endless Summer** provides port and starboard access doors on either side of the galley.

The owners of **Endless Summer** have decided to sell their very customized yacht, to pursuit another custom build

Significant Options:

- TRAC STABILZERS
- BOW & STERN THRUSTER (HYDRAULIC) UPGRADE
- UPGRADED DAVIT 1500 LB HYDRAULIC
- DOUBLE GRILL ON BRIDGE
- (2) 100 AMP RETRACTABLE SHORECORDS AFT & FORWARD
- TEAK AFT DECK, TEAK STEPS TO BRIDGE, TEAK STEPS TO SWIM PLATFORM & TEAK BRIDGE
- WATERMAKER
- UNDERWATER LIGHTS
- TEAK WOOD FLOORS IN SALON
- YACHT CONTROLLER OF BOW & STERN THRUSTERS, AND WINDLASS

Основная информация

Тип судна: Моторная яхта

Модельный год: 2008

Год постройки: 2008

Страна: United States

Размеры

Длина общая: 72' 0" (21.95m)

Ширина: 20' 2" (6.15m)

Макс. осадка: 5' 4" (1.63m)

Длина привального бруса: 73' 4"
(22.35m)

Скорость, вместимость и масса

Крейс. скорость: 23 Kts. (26 MPH)

Макс. скорость: 25 Kts. (29 MPH)

Водоизмещение: 160000 Pounds

Вместимость воды: 300 Gallons

Вместимость сточного бака: 350 Gallons Объем топливного бака: 220 Gallons

Размещение

Всего кают: 4

Всего ком. состава: 3

Корпус и палуба

Материал корпуса: Fiberglass

Информация о двигателе

Двигатели: 2

Производитель: Caterpillar

Модель: C32

Тип топлива: Diesel

ПОДРОБНОЕ ОПИСАНИЕ

Significant Options

- TRAC STABILIZERS
- BOW & STERN THRUSTER (HYDRAULIC) UPGRADE
- UPGRADED DAVIT 1500 LB HYDRAULIC
- DOUBLE GRILL ON BRIDGE
- (2) 100 AMP RETRACTABLE SHORECORDS AFT & FORWARD
- TEAK AFT DECK, TEAK STEPS TO BRIDGE, TEAK STEPS TO SWIM PLATFORM & TEAK BRIDGE
- WATERMAKER
- 3" WIDE BEVELED PLANKS IN STAIRWELL GOING FORWARD FROM OPTIONAL PILOTHOUSE TO SLEEPING QUARTERS FORWARD.
- UNDERWATER LIGHTS
- TEAK WOOD FLOORS IN SALON
- YACHT CONTROLLER OF BOW & STERN THRUSTERS, AND WINDLASS

Arrangement Description

LOWER:

Four Staterooms / Three Head Selection with His and Hers Head option. The Port Stateroom custom built office arrangement

UPPER:

Galley with Forward Lounge / Dinnette

Day Head

AFT:

Aft Vip / Crew Quarters

Aft Deck Custom Features:

- ADDITIONAL FRESHWATER OUTLET
- TRANSOM HOOP RAILS
- 20" LCD TV FOLD DOWN, OVER HEAD
- TEAK AFT DECK
- TEAK STEPS TO BRIDGE
- TEAK STEPS TO SWIM PLATFORM

- TEAK BRIDGE
- AFT DECK SIDE GATES

Salon

- EXTRA LIGHTING OVERHEAD AND INCORPORATE DUAL FLOOD FIXTURES (4 EACH) IN STRATEGIC LOCATIONS
- SHALLOW STORAGE CABINET INSET INTO PORT FORWARD SALON STUDWALL.
- CUSTOM OVERHEAD CEILING TREATMENT IN SALON OVER THE DINING TABLE. AREA ROUND AND RECESSED WITH TRIPLE BULLNOSE MOLDING. MOLDING IS ROPE LIGHTING BEHIND IT. CENTER OF RECESSED SPACE WITH SECTIONS OF CLEAR PLEXIGLASS MIRROR WITH A CHANDELIER MOUNTED IN CENTER.
- REPLACED STANDARD CROWN MOLDING IN THE SALON PORT AND STARBOARD AND ON THE MASTER STATEROOM AIR CONDITIONING SOFFIT OVER THE BERTH TO A TRIPLE BULLNOSE DESIGN SIMILAR TO THE 80MY MOLDING.
- A SMALL RECESSED CABINET IN THE FORE AND AFT BULKHEAD ABOVE THE AIR CONDITIONING CABINET TO STARBOARD AND AFT IN THE SALON WITH A SINGLE DOOR AND 2 ADJUSTABLE SHELVES INSIDE. DIMENSIONS ARE 14 INCHES WIDE, 30 INCHES TALL AND 10 INCHES DEEP. A SINGLE DUPLEX 120 VAC OUTLET INSIDE OF THE CABINET.
- REMOVE PORT SIDE TIDE-RIDE SEA STAIR STORAGE RECESS IN SUPERSTRUCTURE SIDE AND SEAL OVER OPENING. CONSTRUCT CABINETS ON THE INTERIOR OF THE SALON IN THIS AREA AS A CONTINUATION OF THE AFT PORT SIDE SALON CABINETS. SEA STAIRS TO STORE IN REMAINING RECESS ON STARBOARD SIDE.
- INCREASE THE WIDTH OF THE TOP OF THE STARBOARD SIDE AFT AIR CONDITIONING END TABLE CABINET IN THE SALON BY APPROXIMATELY 6 INCHES AND FORM OPEN SLIDE IN MAGAZINE-BOOK STORAGE ACCESSIBLE FROM INBOARD SIDE OF CABINET. INSTALL FALSE BACK IN RACK TO PREVENT BOOKS OR MAGAZINES FROM GETTING LOST IN BACK OF OPENING.
- THE END TABLE AIR CONDITIONING CABINET STARBOARD AFT IN THE SALON HAS A WOOD TOP WITH STANDARD MOLDING.
- DINING TABLE -- 54" ROUND; SELF STORED LEAF IN PEDESTAL OPENING ONE WAY TOWARD CENTER OF BOAT ONLY; MAHOGANY STRAIGHT GRAIN PERIMETER WITH 1/4" BLACK INLAY WITH CROTTCHED MAHOGANY STARBURST MITERED WITH GRAIN, GRAIN DIRECTION TO THE CENTER. PEDESTAL STRAIGHT GRAIN MAHOGANY.

Sunken Bar Features:

- SUB ZERO WINE COOLER
- SUNKEN BAR WITH 3 CHAIRS

- SUNKEN BAR IN SALON 9" GEMINI STAINLESS STEEL BAR SINK AND STANDARD FAUCET. 15" WIDE WINE COOLER IN LIEU OF STANDARD ICEMAKER.
- GLASS AND BOTTLE STORAGE BELOW BAR. UPPER BAR TOP HEIGHT RAISED SO THAT THERE IS JUST ENOUGH SPACE FOR RECEPTACLES AND A SWITCH INSTALLED HORIZONTALLY ON THE FACE BETWEEN THE LOWER AND UPPER BAR SURFACES.
- RELOCATED STANDARD BAR RECEPTACLE FROM BULKHEAD AFT OF BAR TO FACE BETWEEN BAR TOPS AND INSTALLED (2) ADDITIONAL RECEPTACLES SPACED EVENLY, ONE AFT, ONE FORWARD AND ONE IN THE MIDDLE. THE BAR LIGHT SWITCH ADJACENT TO THE MOST FORWARD RECEPTACLE. SHALLOW UTENSIL DRAWER INCORPORATED IN BAR.
- HOLDING TANK GAUGE PROVIDED SHOWING AVAILABLE CAPACITY FOR HOLDING TANK ONLY. LED STYLE UNIT INSTALLED WITH DISPLAY LOCATED IN STAIRWELL AFT OF SALON BAR, INBOARD SIDE AT APPROXIMATE EYE LEVEL. ALSO A HOLDING TANK PUMP OUT SWITCH AT THIS LOCATION.
- SALON BAR FLOORING (AMERICAN TILE) 12" X 12" BLACK GALAXY WITH 2" KEY TILES OF (AMERICAN TILE) MASCARELLO

Day Head

- Plexi Mirrored Ceiling
- DAY HEAD FLOORING INSTALLED BY (AMERICAN TILE) MW05326-C TIGRIS MESH 011-52.
- DAY HEAD COUNTERTOP (AMERICAN TILE) NERO PORTORRO WITH BULLNOSE EDGE.
- DAY HEAD SINK (HERBEAU FROM DORNBRACHT) 4301 SEINE OVAL BOW IN FINISH 65, HAMMERED POLISHED NICKEL; UNDERMOUNT.
- DAY HEAD PASSAGEWAY DOOR, OUTSIDE ONLY, SKETCHED FACE OF STRAIGHT GRAIN MAHOGANY AROUND PERIMETER WITH 1/4" INLAY OF BLACK WITH "X" MITERED BOOKMATCHED CENTER IN MAPPA BURL

Galley

- SOAP DISPENSER, GALLEY SINK
- GALLEY HAS A 36" SUBZERO SIDE BY SIDE REFRIGERATOR FREEZER IN LIEU OF STANDARD 42" UNIT. TALL STORAGE LOCKER (BROOM CLOSET) FORWARD OF REFRIGERATOR
- GALLEY ISLAND AND A 27" WIDE SUB ZERO DRAWER STYLE REFRIGERATOR IN THE AFT SECTION OPENING TO PORT AND A ROLL OUT TRASH BIN FORWARD. A SMALL DRAWER ABOVE THE TRASH BIN SLIDE OUT.
- MAGAZINE RACK ON THE FRONT OF THE ISLAND CABINET.
- ADDED A DOUBLE DRAWER KITCHENAID DISHWASHER FORWARD OF THE SINK

IN THE GALLEY, MODEL KUDD01DPPA .

- FLORESCENT LIGHTING UNDER CABINETS TO PROVIDE SUFFICIENT WORK SURFACE LIGHT IN GALLEY.
- LED UNDER CABINETS PROVIDES SWITCHED "MOOD" LIGHTING. WOOD TRIM AROUND FLOURSCENTS TO HIDE FIXTURE.
- 12" FIXTURE FOR FORWARD GALLEY CABINET.
- DINETTE MOUNTED ON PEDESTAL WITH DINETTE SEATING FORWARD AND SPACE FOR LOOSE CHAIRS AFT. STORAGE ON BOTH PORT AND STARBOARD SIDES OF TABLE AREA. PORT SIDE STORAGE HAS LARGE DRAWERS WITH SIDE CUT OUTS FOR POTS AND PANS AND OTHER LARGE ITEMS.
- ADDED A (SHARP) INSIGHT COMBINATION RANGE WITH COOKTOP
- MICROWAVE DRAWER AND OVEN, MODEL KB 4425 LS (STAINLESS STEEL). SPACE SAVING HOOD ARRANGEMENT OVER THE COOK TOP, MODEL KB 0333 KS (STAINLESS STEEL) WITH A SMALL CABINET OVER THE HOOD.
- MAXIMIZE THE STORAGE IN THE PORT AFT CORNER OF
- THE GALLEY BASE CABINET TAKES ADVANTAGE OF ANY AVAILABLE SPACE NOT BEING TAKEN UP BY THE PORT FORWARD SALON AIR CONDITIONING UNIT. INCORPORATED A LAZY SUSAN IN THE REMAINING SPACE COMBINED WITH SPACE FORWARD OF AIR HANDLER.
- CEILING CABINET OVER THE GALLEY ISLAND WHICH DROPS DOWN FROM HEADLINER APPROXIMATELY 20 INCHES
- 18 INCH DOORS ON BOTH PORT AND STARBOARD SIDES, INCLUDES DOWN LIGHTS ON BOTTOM AND 120 VAC RECEPTACLE. ISLAND BASE CABINET IS CUSTOM SIZED.
- OVERHEAD AIR CONDITIONING RETURN AIR TO A RECTANGULAR OPENING ADJACENT TO CABINET IN LIEU OF STANDARD OPENING. CABINET USED FOR CHINA STORAGE. INCLUDES AN UNDER COUNTER FLUORESCENT LIGHT FIXTURE ON BOTTOM OF CABINET WITH WOOD TRIM AROUND TO HIDE FIXTURE.
- 5 REFRIGERATORS IN TOTAL: 3 GALLEY (1 FULL SIZE, 2 DRAWERS), 1 CREW FRIDGE, 1 HELM FRIDGE

Master Stateroom

- UPGRADED HMC MATTERAS
- MATTERAS PAD
- TV IN MASTER AT PORT FORWARD CORNER. 26" SHARP TV IN LIEU OF A 20" TV
- STARBOARD FORWARD HALF OF DRESSER IN STATEROOM FORMS A HINGE LID OVER A DESK AREA, FILE STORAGE BELOW. 120 VAC OUTLET INSIDE OF DESK AREA.
- MASTER STATEROOM BED NORMAL KING. STANDARD KING DIMENSIONS ARE 76" WIDE X 80" LONG.
- MASTER HEAD DOORS (2) FACING STATEROOM ONLY SKETCHED FACE OF STRAIGHT GRAIN MAHOGANY AROUND PERIMETER WITH 1/4" INLAY OF BLACK

WITH "X" MITERED BOOKMATCHED CENTER IN MAPPA BURL.

- INCLUDED ARE THE OFFICE ENTRY POCKET DOOR, THE MASTER ENTRY POCKET DOOR AND THE STARBOARD STATEROOM ENTRY DOOR.
- THE OFFICE AND STARBOARD ENTRY DOORS HAVE THE SIDE FACING INTO THE COMPANIONWAY IN SKETCH FACE AND THE MASTER ENTRY DOOR SIDE FACING INTO THE OFFICE IS SKETCH FACE.
- GUN SAFE UNDER THE MASTER STATEROOM BERTH
- RADIUS CORNERS OVER NIGHTSTAND IN MASTER STATEROOM WITH FINISHED WOOD VERSUS LUAN AND CONTINUE FINISHED WOOD ACROSS ENTIRE BULKHEAD
- TRIPLE BULLNOSE MOLDING AROUND THE PERIMETER OF THE RAISED CEILING PORTION OF THE OVERHEAD IN THE FORWARD SECTION OF THE MASTER STATEROOM

Master Head: His & Her Arrangement

- PLEXI MIRRORED CEILING
- (3) BODY WASH SHOWER HEADS IN ADDITION TO STANDARD IN MASTER SHOWER. BODY WASH HEADS HAVE INDIVIDUAL CONTROL.
- MASTER HEAD FLOORING (AMERICAN TILE) INSTALLATION OF (RENAISSANCE TILE AND BATH) BASKETWEAVE RENNADMOS WOVEN PW/MB IN 12 X 12 IN STATUARY WITH ACCENT KEYS OF BLACK.
- MASTER HIS AND HER HEAD COUNTERTOPS (AMERICAN TILE) EGEO ONDULATO WITH BULLNOSE EDGE.

Port Stateroom / Office:

- PORTLIGHT WITH WINDOW TREATMENT AND VALANCE
- PORT STATEROOM IS A CUSTOM OFFICE WITH DESK OUTBOARD AGAINST HULLSIDE
- ENTRY DOOR FURTHER AFT AND A POCKET DOOR IN LIEU OF HINGED.
- OFFICE DESK HAS PENCIL DRAWER IN CENTER AND STORAGE FILE DRAWER ON EITHER SIDE.
- ACCESS TO HEAD FROM COMPANIONWAY ONLY.
- OFFICE FURNITURE ANGLED SOFA AND OTTOMAN.
- EXTRA 120 VAC RECEPTACLES AND EXTRA LIGHTS.2 ADDITIONAL LIGHTS OVER SOFA
- ALL WALLS AND HULLSIDING IN CUSTOM OFFICE FINISHED WOOD
- IN ADDITION TO SHELF KEEPERS ON THE SHELVES IN THE OFFICE, REMOVABLE SEA RAILS THAT ARE ADJUSTABLE WITH SHELVES. RAILS ARE THIN STRIPS OF WOOD WITH SLOTS CUT SO THEY CAN BE INSERTED AND REMOVED AS SHELVES ARE ADJUSTED.

Port Head

- PLEXI MIRRORED CEILING
- PORT GUEST HEAD COUNTERTOP (AMERICAN TILE) ROYAL ONYX WITH BULLNOSE EDGE.
- PORT GUEST HEAD FLOORING (AMERICAN TILE) HONEY ONYX MOSAIC WITH 2" KEYS OF COUNTERTOP (AMERICAN TILE) ROYAL ONYX. .

Starboard Stateroom

- LOWER BERTH IN OPTIONAL STARBOARD SIDE BUNK ROOM
- INCLUDES A LARGE DRAWER ON HEAVY DUTY FULL EXTENSION SLIDES
- SMALL SHELF ADJACENT TO EACH BUNK IN THE STARBOARD OPTIONAL FOURTH STATEROOM FOR PERSONAL ITEMS.

Bow Stateroom

- UPGRADED HMC MATTRESS
- BOW STATEROOM PORT HANGING LOCKER WITH HALF HEIGHT HANGING AND 2 SHELVES BELOW FOR LAUNDRY AND SHOE STORAGE.
- HANGING BAR TELESCOPIC CENTERED IN OPENING.
- UPPER SHELF SUPPORTS HANGING BAR.
- WARDROBE RAIL WITH PLASTIC RUNNER, 10 1/4" WITH 17.5 LB. LOAD CAPACITY. MANUFACTURER NUMBER 805.01.702. NICKEL PLATED

Bow Head

- Plexi Mirrored Ceiling
- BOW GUEST HEAD COUNTERTOP (AMERICAN TILE) ALABASTER ONYX WITH BULLNOSE EDGE. BOW S/R /HEAD - GUEST

Navigation Electronics

- FURUNO NAVNET 3D (2 SCREENS) CHARTPLOTTER
- FURUNO 72 MILE RADAR
- NOBLETEC PC PLOTTER
- (4) VEI MONITORS
- VEI SSIR LCD CONTROL PANEL
- VEI MOUSE
- FURUNO RD-30

- SIMRAD AP50 AUTOPILOT
- CARLISLE & FINCH NIGHT VISION
- (2) UNIDEN VHF UM625C
- SIMRAD RI35 RUDDER POSITION INDICATOR
- FLOSCAN

Bridge Features

- CROWN LTD HELM SEATS
- CROWN LTD BAR STOOLS
- MARVEL REFRIGERATOR
- WET BAR
- TEAK DECKS
- UPGRADED BRIDGE AIR CONDITIONING
- DOUBLE GRILL
- INTERGRATED HARDTOP WITH FIXED FORWARD WINDSHIELD, WINDSHIELD WIPERS AND WASHERS, OPEN SIDES AND AFT
- EZ2CY PANELS PORT AND STARBOARD
- STRATAGLASS ENCLOSURE ACROSS AFT SECTION
- A (MARVEL) STAINLESS STEEL REFRIGERATOR STARBOARD ON THE FLYING BRIDGE IN A SIMPLE FIBERGLASS CABINET WITH A STONE TOP. UNIT TO FACES INBOARD.
- CHART STORAGE BOX, SURFACE MOUNTED, TO PORT OF THE FLYING BRIDGE HELM APPROXIMATELY 2" DEEP WITH DOUBLE PLEXIGLASS LIDS WITH A 1/2" SPACER BETWEEN FOR A CHART BOOK.
- 6 FOOT SECTION OF LOUNGE SEATING AFT OF THE FLYING BRIDGE ON THE BOAT DECK WITH HALF-ROUND END TABLES ON EACH END,
- SOLID SURFACE MATERIAL ON END TABLES (AVONITE) CAIRO F1-9130 SATIN WITH BULLNOSE EDGE.
- YACHT CONTROLLER OF BOW & STERN THRUSTERS, AND WINDLASS

Helm Features

- BOW & STERN THRUSTERS
- YACHT CONTROLLER
- BACKUP CAT CONTROLS
- TRAC STABILIZERS
- FLO SCAN FUEL MONITORING
- NIGHT VISION
- FUSION STEREO AND SPEAKERS
- REDUNDANT ELECTRONICS

Aft Stateroom VIP / CREW:

- UPGRADED HMC MATTERAS
- MATTERAS PAD
- DORM SIZED REFRIGERATOR IN THE AREA OUTBOARD OF THE STAIRS FROM THE SALON TO THE AFT VIP STATEROOM.
- CUSTOM READING AREA
- CUSTOM ARRANGEMENT

Engine Room

- AIR CONDITIONING BACK UP SEA WATER PUMP, PLUMBED AND WIRED
- SHELF OVER THE WATER HEATER TO PORT IN THE ENGINE ROOM FOR TOOL BOX.
- FRESH OIL TANK IN THE ENGINE ROOM PLUMBED TO THE OIL CHANGE SYSTEM.
- DC FRESH WATER BACK UP PUMP IN ENGINE ROOM.
- ADDITIONAL RAIL IN THE OVERHEAD FORWARD OF EACH ENGINE
- (2) EACH UNDERWATER LIGHTS BY (UNDERWATER LIGHTS, LTD) IN TRANSOM.
- GP LINK MONITORING SYSTEM
- ENGINE ROOM CAMERA'S

Electrical Upgrades

- 2 100 AMP RETRACTABLE CORDS FORE & AFT
- CAT GENERATORS IN LIEU OF STANDARD
- YACHT CONTROLLER OF BOW & STERN THRUSTERS, AND WINDLASS

Foredeck

- SUNPAD AND COVER
- BUSTLE HOOP RAILS INCREASED IN HEIGHT BY 5 INCHES.
- SIDE DECK HOOP RAILS MAINTAINED AT 36 INCHES FROM DECK.
- RAILS AT STAIRS FROM AFT DECK TO SWIMPLATFORM RAISED 3 INCHES.
- RAILS ON FLYING BRIDGE RAISED TO 36 INCHES.
- RAIL ON STAIRS FROM AFT DECK TO BOAT DECK INCREASED IN HEIGHT BY 3 INCHES.

Wood and Finish

- AFRICAN MAHOGANY HIGH GLOSS

Color

- HULL AND SUPER PAINT STANDARD (ALEXSEAL) CLOUD WHITE, T 9132
- BOOT STRIPE (ALEXSEAL) SUPER JET BLACK, T 9232
- BOTTOM (SEA HAWK) CUKOTE, BLACK 3445 GL.

Audio & Visual

- UPGRADED TV'S THROUGHOUT
- KALEIDESCAPE A/V SERVER WITH CONTENT

Additional Electronics

- KALEIDESCAPE A/V SERVER
- WIFI AMPLIFIER / REPEATER
- ROKU WIRELESS CAPABILITY WHERE WIFI AVAILABLE
- GP LINK WIRELESS MONITORING SYSTEM
- 3 CAMERAS
- FUEL FLOW MONITORING SYSTEM

Exclusions

- Personal artwork and tools in toolbox.

Disclaimer

The Company offers the details of this vessel in good faith but cannot guarantee or warrant the accuracy of this information nor warrant the condition of the vessel. A buyer should instruct his agents, or his surveyors, to investigate such details as the buyer desires validated. This vessel is offered subject to prior sale, price change, or withdrawal without notice.

Engine Warranty

Marine engines are covered under a 48 month, 2000 hour, \$0 deductible Advantage Platinum Plus Extended Service Coverage (ESC) policy. It will expire on 6/11/2019 or at 3,685 engine hours, whichever comes first.

Исключения

При продаже яхты исключаются личные вещи владельца.

Отказ от ответственности

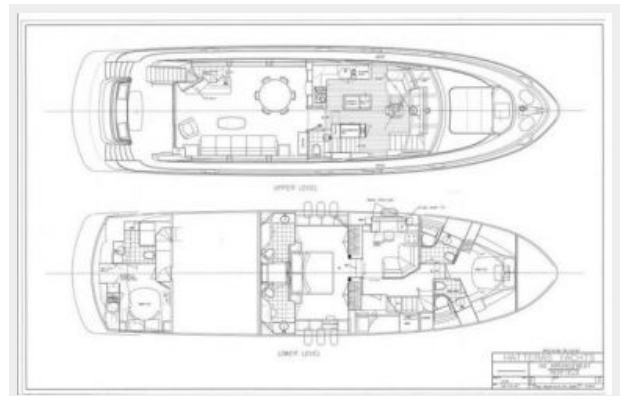
Компания предоставляет описание судна или яхты добросовестно, но не может гарантировать точность этой информации, а также не ручается за техническое состояние. Покупатель должен проинструктировать своих агентов или оценщиков исследовать представленную информацию более подробно, по собственному желанию. Продажа судна или яхты, изменение цены или снятие с продажи будет происходить без предварительного уведомления.

ФОТОГРАФИИ

Profile



General Arrangement



Aft deck



Aft deck



Aft deck



Stairs



Sunpad



Sunpad



Sunpad



Bow



Bow



Bow



Flybridge



Flybridge



Flybridge



Flybridge



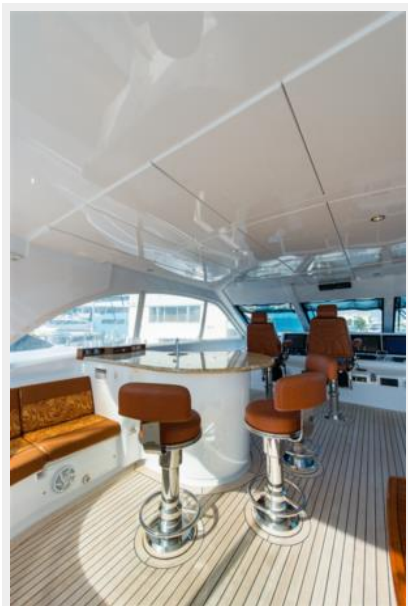
Flybridge



Flybridge



Flybridge



Flybridge seating



Seating



Storage



Helm



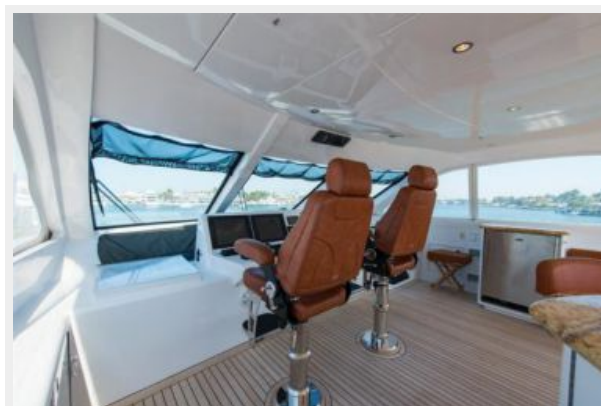
Helm



Helm



Helm



Helm



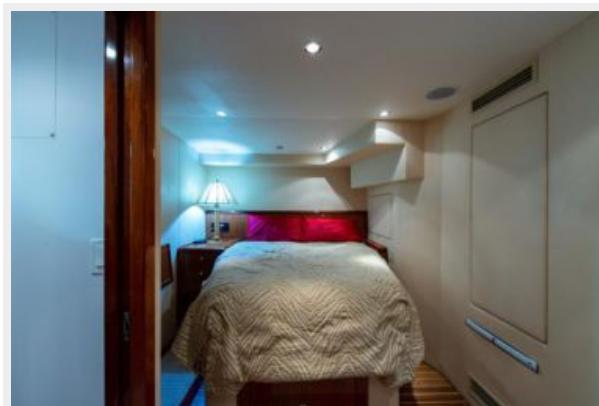
Electronics



Electronics

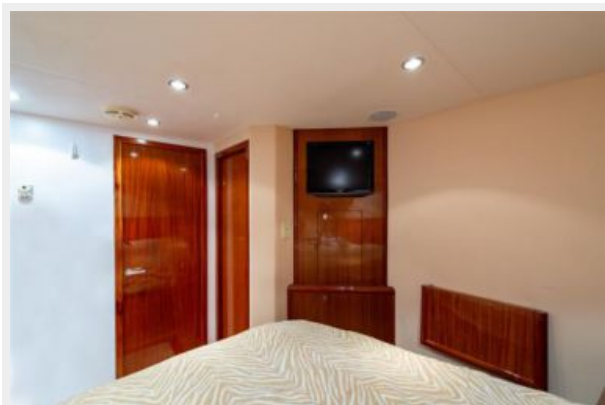


Crew quarters



Crew quarters

Crew quarters



Head



Custom office



Custom office



Custom office



Custom office



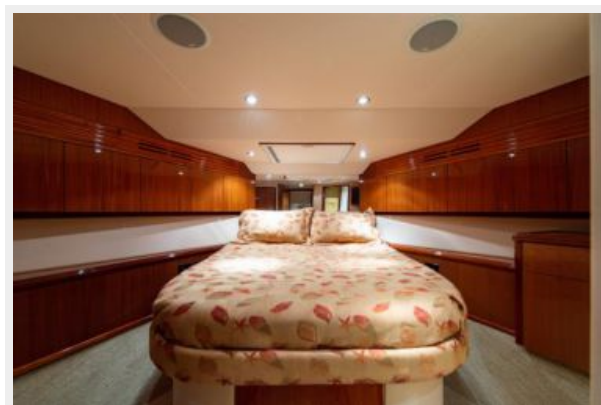
Forward head



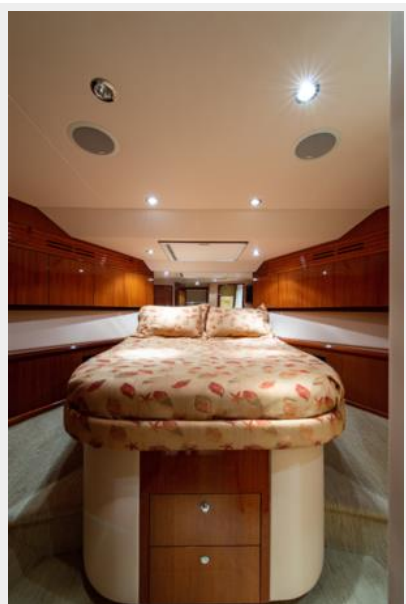
Forward head



Forward stateroom



Forward stateroom



Forward stateroom



Forward stateroom



Forward stateroom



Forward stateroom



Galley



Gues head



Guest head



Guest stateroom



Guest stateroom



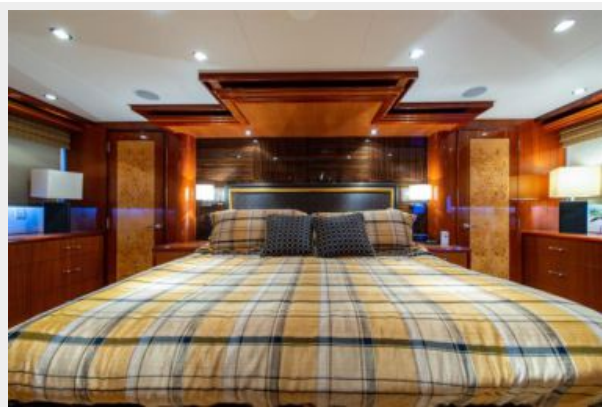
Guest stateroom



Washer dryer



Master stateroom



Master stateroom



Master stateroom



Master stateroom



Master stateroom



Master stateroom



Master stateroom



Master stateroom



Side



Side



Salon



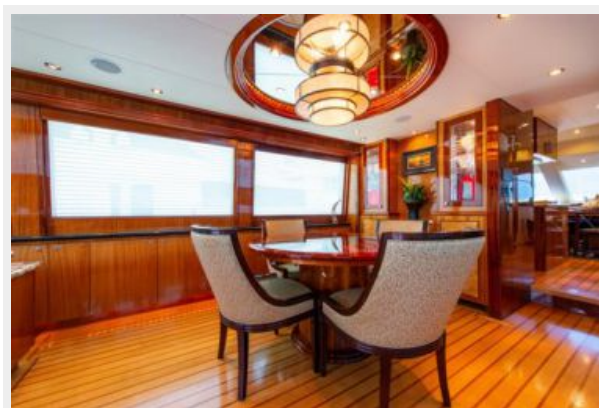
Salon



Salon



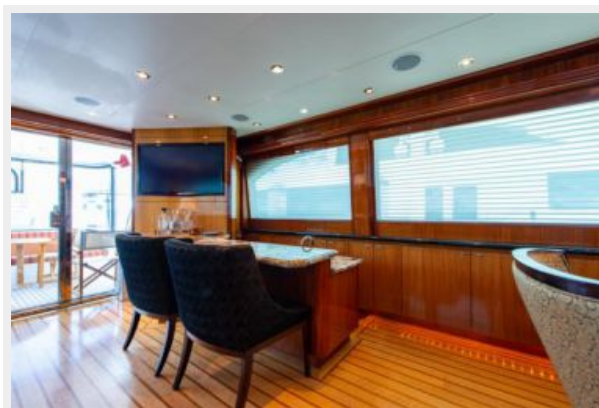
Salon seating



Salon seating



Salon seating



Salon seating



Salon seating



Engine room



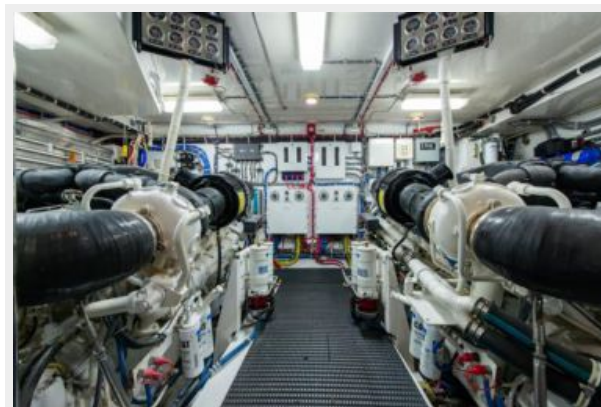
Engine room



Engine room



Engine room



Engine room



Engine room



Engine room



Engine room



Engine room



КОНТАКТЫ

Андрей Шестаков (Andrey Shestakov) – ведущий яхтенный брокер отдела продаж яхт и судов компании Shestakov Yacht Sales Inc. Официальный представитель Shestakov Yacht Sales Inc. для русскоговорящих клиентов в центральном офисе компании в Майами/Форт Лодердейл/Флорида/США.

Контактная информация

Email: andrey@shestakovyachtsales.com

Web: shestakovyachtsales.com

Телефоны

Краснодарский край: **+7(918)465-66-44**

США, Майами, Флорида: **+1(954)274-4435**

Время работы

Понедельник – Суббота: **9:00 - 21:00**
EDT

Воскресенье: **Закрито**

Адрес



Harbour Towne Marina, 850 NE 3rd St,
STE 213, Dania, FL 33004