

ST NICHOLAS — WESTSAIL



Судостроитель: WESTSAIL

Длина общая: 32' 0" (9.75m)

Год постройки: 1973

Модель: Крейсерская яхта

Цена: ЦЕНА ЯХТЫ ПО ЗАПРОСУ

Местонахождение: United States

Купить St Nicholas — WESTSAIL а также выбрать подходящую вам яхту из нашего каталога яхт вам поможет опытный яхтенный брокер Андрей Шестаков. На сегодняшний день компания Shestakov Yacht Sales Inc. имеет большое количество яхт в собственном списке продаж, а также тесно сотрудничает со всеми крупными яхтенными производителями по всему миру.

Для того чтобы купить яхту St Nicholas — WESTSAIL а также проконсультироваться по любому вопросу связанному с покупкой, продажей, чартером яхт позвоните по телефону **+7(918)465-66-44**.

ОГЛАВЛЕНИЕ

ОГЛАВЛЕНИЕ	2
ХАРАКТЕРИСТИКИ	3
Обзор	3
Основная информация	3
Размеры	3
Размещение	3
Корпус и палуба	4
Информация о двигателе	4
ПОДРОБНОЕ ОПИСАНИЕ	5
Accommodations & Layout	5
Deck & Hull	5
Sails & Rigging	5
Electronics & Navigation	6
Electrical & Mechanical	6
Disclaimer	7
Исключения	7
Отказ от ответственности	7
ФОТОГРАФИИ	8
КОНТАКТЫ	15
Контактная информация	15
Телефоны	15
Время работы	15
Адрес	15

ХАРАКТЕРИСТИКИ

Обзор

RECENT SURVEY AVAILABLE. Just returned from Bahamas and ready to view in Fort Pierce. This is a factory finished boat, fully rigged for extended offshore cruising. Interior was slightly modified to better utilize the space inside. The boat was substantially refitted and upgraded 8 years ago - old teak wood decking was replaced with fiberglass ½ inch nonskid fiberglass panels, all portholes were re-bedded with Silaprene, wood inside was partially replaced, all inside and outside (navigation) lights were refitted or replaced with LED, and a lot others. Last 8 years the boat was sailing on Great Lakes fresh water, then moved to Florida and sailed to Bahamas. The boat is fully equipped for single handed sailing - all halyards are led to the cabin top winches and clutches at the cockpit. Boat has jib's roller furling system, Raymarine electronic autopilot and Norvane Auto-steering windvane, electric windlass for easy anchor handling from cockpit, others systems essential for solo navigation. Fully functioning head with shower, holding tank, sinks with fresh cold and hot water pressurized systems, also manual pumps for fresh cold water and seawater, 12-volt refrigerator, 110-volt marine air conditioner, 110-volt microwave, cabin heater and other equipment, that are making excellent accommodations for living aboard in extended cruising in all areas of the world. All gear, equipment, and instruments are fully functioning.

Основная информация

Тип судна: Крейсерская яхта

Подкатегория: Cutter

Модельный год: 1973

Год постройки: 1973

Страна: United States

Размеры

Длина общая: 32' 0" (9.75m)

Размещение

Всего кают: 1

Корпус и палуба

Материал корпуса: Fiberglass

Информация о двигателе

Двигатели: 1

Производитель: Yanmar

Модель: 3GM30F

Тип топлива: Diesel

ПОДРОБНОЕ ОПИСАНИЕ

Accommodations & Layout

Typical factory finished layout with big V-berth forward, two berths on the starboard of the cabin (one above the other), one berth on the port side, table in the middle with folding one leaf, removable companionway stairs for access to engine room, which also contains three battery banks and fuel tank and finishes with isolated locker for propane tanks. Galley to port with a sink, with two propane burner stove, big 12-volt refrigerator (works great), hanging lockers all around. Sea water cooled 110-volt air conditioner on the top of the closet adjacent to big navigator/chart table on the starboard with drawers and lockers around. Electrical panel is close to navigator table. Chain locker is in the forepeak. Head (port side) with new bowl, manual pump, switch to holding tank or outside, sink with shower (cold and hot pressurized water system). Teak cabin sole. Closet opposite the head. Microwave oven inside hanging locker above the port side berth. Cabin heater to starboard. A lot of storage everywhere in the cabin. Stainless steel sink with pressurized cold and hot fresh water from two 40 gallon stainless steel tanks under the floor. Fresh cold water hand pump for backup. Saltwater manual pump. Stainless steel two burner gimballed propane countertop style stove with LPG control/shutoff solenoid (in the propane tanks enclosed compartment). 12-volt big refrigerator works great. A lot of storage above refrigerator and under the stove. Microwave on the enclosed shelf on the port upper side of the cabin.

Deck & Hull

Non-skid fiberglass panels laid out by Tartan technology which replaced standard teak decks. New wood bowsprit with teak platform and stainless anchor roller on starboard side. Wood on boomkin recently replaced. Stainless steel mast rails on both sides of tabernacle. Plexiglass hatch over forward cabin. 10 round bronze ports on cabin sides. Canvas dodger. Two new aluminum propane tanks below decks in separate isolated locker. Two solar paneled vents, and two "old style" vents. Compass on port side of companionway. Ground tackle: 45 lb. CQR anchor, 30 lb. Claw anchor, 25 lb. Fluke anchor. Maxwell electric anchor windlass with 300 feet rope / chain combination (new). Extras: Norvane auto-steering windvane Para (Sea) anchor 12 feet Safety equipment: lifejackets, horseshoe lifering, Lifesling overboard system, flares, two fire extinguishers, stainless boarding ladder. And a lot of more.

Sails & Rigging

Mast and Rigging: Cutter rigged. Factory built aluminum mast and main boom. Staysail boom is replaced by staysail sheeting system with self-tailing winches on top of the cabin for better sail control. Standing rigging from stainless steel wire include: four forward stays, backstay, two running backstays, two upper shrouds, four lower shrouds. Mast is stepped in a tabernacle with two heavy bolts across the mast (acting as additional pair of spreaders). All halyards are led aft to the cockpit through clutches and winches on the top of the cabin. Standard boom vang is

replaced with mainsheet traveler (received from Bud Taplin). Harken roller furling system for working jib (received from Bud Taplin). Two aluminum spinnaker poles attached to the deck (on both sides) and bow platform. Winches include: Two big self-tailing winches for jib sheets, two winches aft for spinnaker sheets, two winches for halyards on top of the cabin, separate winch on cabin top for main halyard, winch on the mast for halyard from roller furling jib, winch on the mast for topping lift. Sails: Sails inventory include nine older sails in very good condition and three new sails: Main with full battens, battenless main (new), trysail, working jib (roller furling) 120%, spinnaker, yankee jib, staysail, genoa 165% (new), drifter heavy 170%, drifter light 170% (new), storm jib, anchoring jib.

Electronics & Navigation

- Horizon VHF radio with AIS receiver.
- Furuno 16 mile radar. Raymarine ST-4000 tiller autopilot.
- EPIRB
- Two Garmin marine GPS units.
- Three Raymarine instruments with digital displays: depth, speed, wind.

Electrical & Mechanical

Engine: Yanmar 3GM30F 3 cylinder 30 HP with fresh water cooling system. Runs fine (cruise 5 knots at moderate wind/water @ 1800 rpm). 3-blade bronze prop. Fuel tank 38 gallons. Balmar alternator with external regulator for charging batteries and running anchor electric windlass. Have spare regulators. Heat exchanging system for heating fresh water for galley and shower by engine (water from engine cooling system heats water from fresh water tanks). Additional hatch was installed in the cockpit sole for easy access to engine room (received from Bud Taplin). Plumbing: Water tank capacity: 76 gallons in two stainless steel bilge tanks under cabin sole. Electrical pressurized system for supplying water to galley and sink with shower in the head. Hand pumps for fresh cold water and salt water from the sea. Both sinks (galley and head) are stainless. Electric submersible bilge pump with float switch and hand pump on the port side of the cockpit. Groco bronze thru-hull fittings with Groco bronze sea-cocks. New head bowl with manual pump and switch "Holding tank - Sea". Electrical: Original 12-volt panel with circuit breaker switches, additional remote display and switch for solar panels, 12-volt DC outlets. Two house and one engine cranking battery. New updated 12-volt charging system for range. 110-230-volt input. Two 90-watt Polycrystalline solar panels with 20-amp controller and remote display with wiring. Switches for choosing between house batteries and charging options (engine alternator, charger - dockside electricity, solar panels). Engine instruments and switches in cockpit. Cabin 12-volt lights all are LED. Separate AC 110-volt wiring with circuit breaker switches for dockside electricity with multiple AC outlets all over the boat. Dockside cable: 50 ft. Mast lights include: navigation, tri-color masthead light with anchor light combo, navigation mast light (for mechanical propulsion), two spreader lights, one deck light. All mast lights are LED.

Disclaimer

The Company offers the details of this vessel in good faith but cannot guarantee or warrant the accuracy of this information nor warrant the condition of the vessel. A buyer should instruct his agents, or his surveyors, to investigate such details as the buyer desires validated. This vessel is offered subject to prior sale, price change, or withdrawal without notice.

Исключения

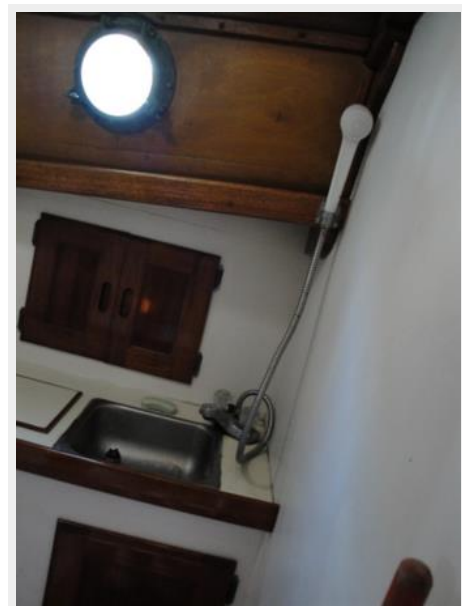
При продаже яхты исключаются личные вещи владельца.

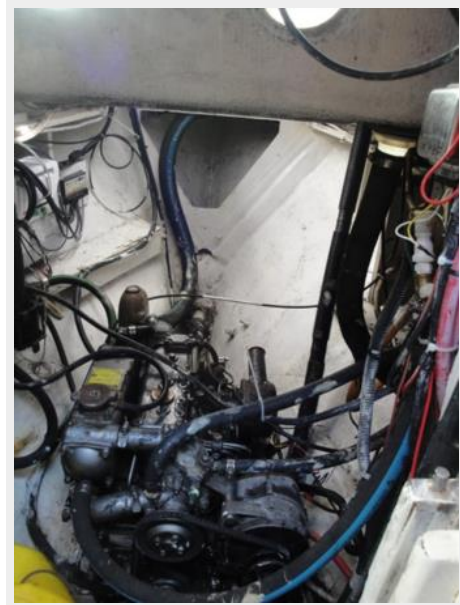
Отказ от ответственности

Компания предоставляет описание судна или яхты добросовестно, но не может гарантировать точность этой информации, а также не ручается за техническое состояние. Покупатель должен проинструктировать своих агентов или оценщиков исследовать представленную информацию более подробно, по собственному желанию. Продажа судна или яхты, изменение цены или снятие с продажи будет происходить без предварительного уведомления.

ФОТОГРАФИИ

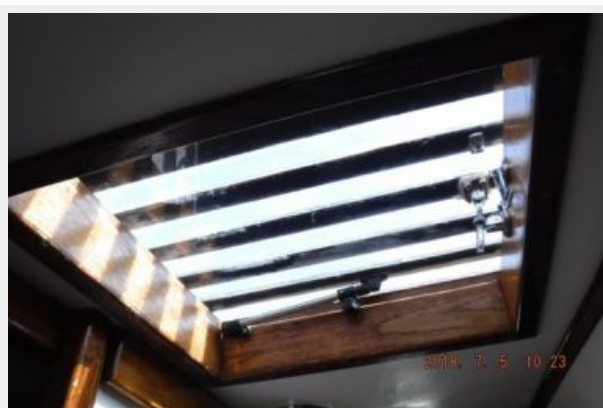














КОНТАКТЫ

Андрей Шестаков (Andrey Shestakov) – ведущий яхтенный брокер отдела продаж яхт и судов компании Shestakov Yacht Sales Inc. Официальный представитель Shestakov Yacht Sales Inc. для русскоговорящих клиентов в центральном офисе компании в Майами/Форт Лодердейл/Флорида/США.

Контактная информация

Email: andrey@shestakovyachtsales.com

Web: shestakovyachtsales.com

Телефоны

Краснодарский край: **+7(918)465-66-44**

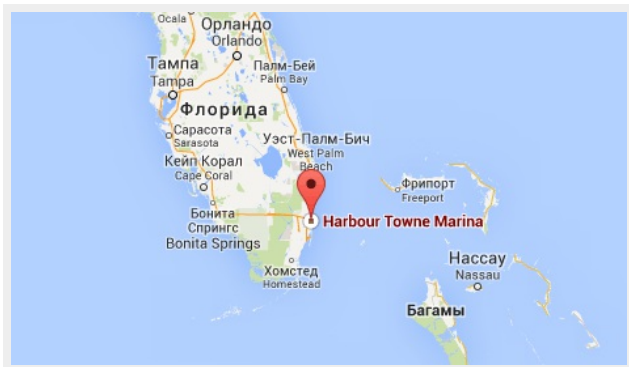
США, Майами, Флорида: **+1(954)274-4435**

Время работы

Понедельник – Суббота: **9:00 - 21:00**
EDT

Воскресенье: **Закрито**

Адрес



Harbour Towne Marina, 850 NE 3rd St,
STE 213, Dania, FL 33004