

BOUNTY HUNTER — VIKING



Builder: VIKING

Year Built: 2016

Model: Sport Fisherman

Price: PRICE ON APPLICATION

Location: United States

LOA: 42' 0" (12.80m)

Beam: 15' 10" (4.83m)

Max Draft: 3' 5" (1.04m)

Our experienced yacht broker, Andrey Shestakov, will help you choose and buy a yacht that best suits your needs **Bounty Hunter — VIKING** from our catalogue. Presently, at Shestakov Yacht Sales Inc., we have a wide variety of yachts available on our sale's list. We also work in close contact with all the big yacht manufacturers from all over the world.

If you would like to buy a yacht **Bounty Hunter — VIKING** or would like help answering any questions concerning purchasing, selling or chartering a yacht, please call **+1(954)274-4435**

TABLE OF CONTENTS

TABLE OF CONTENTS	2
SPECIFICATIONS	3
Overview	3
Basic Information	3
Dimensions	3
Speed, Capacities and Weight	3
Accommodations	3
Hull and Deck Information	4
Engine Information	4
DETAILED INFORMATION	5
Vessel Walkthrough	5
Exclusions	8
Disclaimer	8
PHOTOS	10
CONTACTS	27
Contact details	27
Telephones	27
Office hours	27
Address	27

SPECIFICATIONS

Overview

2016 42' Viking Sport Tower "Bounty Hunter" has been Captain-maintained since she was delivered at the Viking Factory. She features Cummins QSC 600hp engines with Zeus drives with 1100hrs, Seakeeper 5, Eskimo Ice Maker, Spare Props, Upgraded helm A/C, Release Marine Battle Saddle, Redundant Sea water pumps for A/C and custom painted Navy Blue Hull.

- Cummins extended warranty in place until July 2021
- Seakeeper 5 installed during the build

Basic Information

Category: Sport Fisherman

Model Year: 2016

Year Built: 2016

Country: United States

Dimensions

LOA: 42' 0" (12.80m)

Beam: 15' 10" (4.83m)

Max Draft: 3' 5" (1.04m)

Speed, Capacities and Weight

Displacement: 32699 Pounds

Water Capacity: 120 Gallons

Fuel Capacity: 525 Gallons

Accommodations

Total Cabins: 2

Hull and Deck Information

Hull Material: Composite

Engine Information

Engines: 2

Manufacturer: Cummins

Model: QSB w/ Zeus Drive

Engine Type: Inboard

Fuel Type: Diesel

DETAILED INFORMATION

Vessel Walkthrough

Master Stateroom

- Centerline queen berth with storage below
- 2 additional drawers below berth
- Flush mounted LED lighting with dimmer control
- Teak shelf storage outboard, port and starboard
- Overhead hatch with screen and shade
- Quilted bedspread and pillow shams
- Reading lights
- Flat screen HD TV
- CD/DVD player
- Reverse cycle A/C and heat
- Hanging locker
- Private access to head

Guest Stateroom

The Guest Stateroom for "Bounty Hunter" was customized by Viking during the build to house a Seakeeper 5 under the guest bed. The Standard Side by Side twin berth was changed to a wall to wall berth. The full bed is great for a couple or group of kids to sleep in comfort.

- Quilted bedspread and pillow shams
- Flush mounted LED lighting with dimmer control
- Reverse cycle AC/heat
- Storage locker
- Flush mounted stereo speakers

Head

- Polished Corian counter tops
- Teak & Holly Amtico sole
- Undermount sink
- Storage below sink
- Stall shower
- LED lighting
- Exhaust vent
- Mirrored medicine cabinet
- Linen locker

Helm

- Sport Tower Viking hardtop with molded-in integral 3-sided windshield, 58k upgrade over the open model
- V-Kool UV window tint on helm windows
- Release Marine chairs with SS pedals
- Buck Skin Ultra Leather on Helm Chairs and bench seating
- Carpet for Command Deck
- Red, white and blue overhead lighting
- Teak Release Marine pod
- Helm A/C upgraded to 36k BTU's
- Refrigerated Starboard drink boxes
- Custom oversized rod storage lockers, port and starboard

- Centerline helm console with excellent use of space for all electronics.

- Single lever controls
- Joy stick control
- Polished stainless wheel and controls
- Port and Starboard additional electronics storage area
- Costa Clear aft enclosure
- Port and Starboard bench seats with storage
- Center windshield wiper with washer
- Flush mounted centerline compass
- Engine room access hatch

Cockpit

- White Release Marine Battle Saddle, tray, 4 rod holders, 2 cup holders
- Port and Starboard Mezzanine seats - Buck Skin
- 4 Mezzanine movable armrests/cupholders
- Port and starboard in-floor fish boxes, insulated
- All deck hatches have upgraded stainless gas piston supports
- 12 and 24 volt under gunnel outlets
- Clearing rod holders on tower legs
- Overhead rocket launcher
- Molded-in overhead and under gunnel lighting
- Flush mounted swivel rod holders mounted in gunnels
- Mezzanine and tackle center operated hydraulically for engine room access
- Fresh and salt water washdown
- Cockpit fly cover with SS poles to convert to a sun shade

Electronics

RadarGarmin GPSMAP8215, 15" TS MFD preloaded with coastal chartsGarmin 1206-XHD2 radar, 12KW with 6' array

PlotterGarmin GPSMAP8215, 15" TS MFD preloaded with coastal chartsGarmin remote input device, gridGarmin GNT 10 N2K transceiverGarmin WiFi adapter for bluechart mobile

NetworkGarmin GMS10 network expanderGarmin GXM52 weather antenna(2) Garmin 40' network cable

SounderGarmin GSD-26 sounderAirmar B275C-LHW Wide Beam transducer Digital Depth/TempFuruno RD33 data organizer & displayFuruno 235DHTLMSA Hi-Prectmp2 transducer

VHF2 Icom IC-506 VHF radio's(2) Shakespeare 5018 17.5" VHF antenna(2) AME tower/hardtop Rupp mount pack

CameraGost PM-mini IR ball camera, engine room3V dual comp VID amp 2 in 3 our ampThermal ImagingFLIR MD-625 w/ JCUFLIR MD series hardtop mountSAT TVTracvision M3ST

TOWERGarmin GPS MAP 8208 8' touchscreenFuruno RD33 data organizer & displayIcom command mic

Hull and Deck

- Navy Blue Painted Hull
- Bottom painted, September 2017
- 6 Lumishore TIX301-W Underwater lights - 4 transom, 1 Starboard and 1 Port
- Viking hardtop with molded-in integral windshield
- Palm Beach Towers custom tuna tower
- Custom overhead extra deep rod storage lockers
- Aluminum bow rail
- Lewmar V2 windlass
- Fortress anchor with rode and chain
- Bow pulpit
- Molded in navigational lights
- Walkthrough transom door with flip-up gate
- 8 person liferaft - next service in March 2019
- Painted all aluminum to prevent pitting

Palm Beach Towers

- Tuna Tower with 4' gap and brushed pipe
- 60' control box with molded-in compass
- One piece molded standing platform and hardtop
- Tower sunshade with welded antenna mounts
- Molded SAT TV dome mount
- Bench seat with back rest

- Molded-in navigation lights
- Main engine steering and controls
- Molded-in spreader lights, LED
- 6 rod, aft rail rocket launcher
- Rod holders welded on tower legs
- Rupp outriggers
- Rupp center rigger

Engine Room / Mechanical Equipment

- Upgraded Cummins QSC 600hp engines with Zeus drives w/ 1100hrs
- Seakeeper 5
- Spare Props
- Cummins extended warranty in place until July 2021
- Redundant Sea water pumps for A/C
- Phasor Marine generator
- Plumbed oil change system
- Awlgripped engine room
- Fire suppression system
- Fuel priming pumps
- Exhaust relief system
- Trolling valve function
- Clear air engine room intake system
- Hydraulic power steering
- Engine room camera
- Bilge pumps with high water alarm system
- 2 Automatic battery chargers
- Charles Iso boost transformer
- Racor primary fuel filters
- Hot water heater

Exclusions

Transom name and artwork for "Bounty Hunter" is reserved. Seller will remove for Purchaser.

Exclusions

Owner's personal belongings.

Disclaimer

The Company offers the details of this vessel or yacht in good faith but cannot guarantee or

warrant the accuracy of this information nor warrant the condition of the vessel. A buyer should instruct his representatives, agents, or his surveyors, to investigate such details as the buyer desires validated. This vessel or yacht is offered subject to prior sale, price change, or withdrawal without notice.

PHOTOS













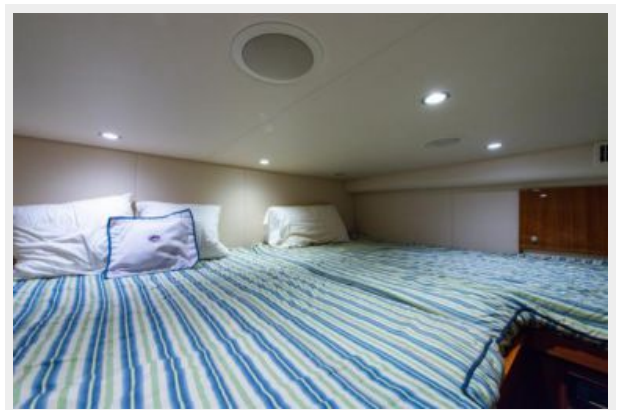




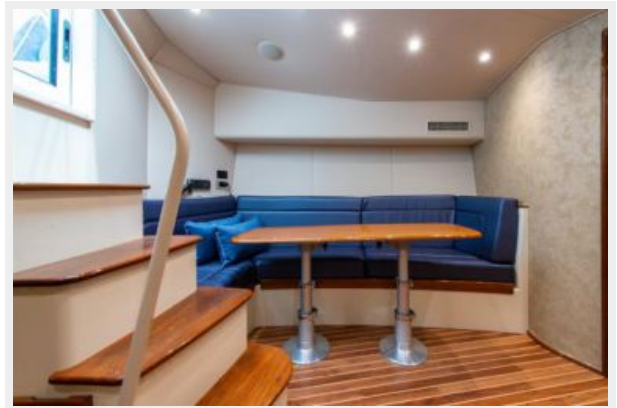
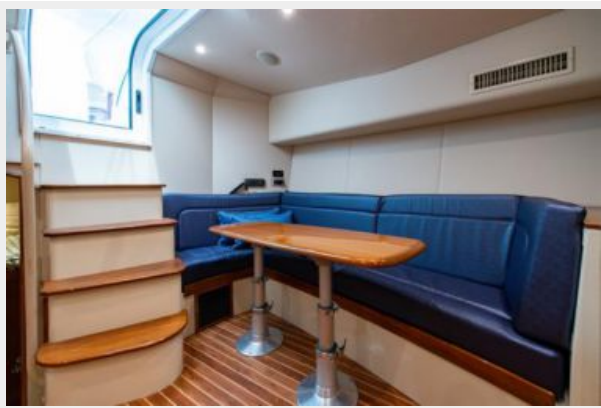
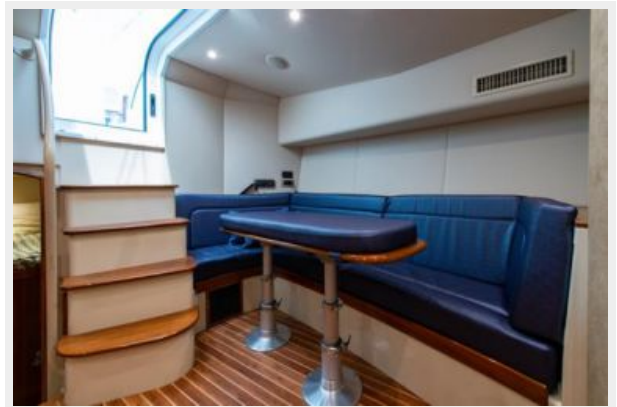


















CONTACTS

Andrey Shestakov, leading yacht broker of the sales department of Shestakov Yacht Sales Inc. Shestakov Yacht Sales Inc., the official representative of the Miami/Fort Lauderdale FL headquarters.

Contact details

Email: andrey@shestakovyachtsales.com

Web: shestakovyachtsales.com/en/

Telephones

USA: +1(954)274-4435

Office hours

Monday – Saturday: **9:00 - 21:00** EDT

Sunday: **closed**

Address



Harbour Towne Marina, 850 NE 3rd St,
STE 213, Dania, FL 33004