

FOCUS — AZIMUT



Builder: AZIMUT

Year Built: 2016

Model: Motor Yacht

Price: PRICE ON APPLICATION

Location: United States

LOA: 55' 0" (16.76m)

Beam: 15' 5" (4.70m)

Max Draft: 3' 9" (1.14m)

Cruise Speed: 30 Kts. (35 MPH)

Max Speed: 35 Kts. (40 MPH)

Our experienced yacht broker, Andrey Shestakov, will help you choose and buy a yacht that best suits your needs **FOCUS — AZIMUT** from our catalogue. Presently, at Shestakov Yacht Sales Inc., we have a wide variety of yachts available on our sale's list. We also work in close contact with all the big yacht manufacturers from all over the world.

If you would like to buy a yacht **FOCUS — AZIMUT** or would like help answering any questions concerning purchasing, selling or chartering a yacht, please call **+1(954)274-4435**

TABLE OF CONTENTS

TABLE OF CONTENTS	2
SPECIFICATIONS	4
Basic Information	4
Dimensions	4
Speed, Capacities and Weight	4
Accommodations	4
Hull and Deck Information	5
Engine Information	5
DETAILED INFORMATION	6
Vessel Walkthrough	6
Highlights	6
Exterior	7
Cockpit	7
Salon/Dining/Galley	8
Helm / Electronics	8
Lower Companionway	9
Master Stateroom	9
Master Head	9
VIP Stateroom/ Bow	9
Starboard Stateroom	10
Guest Head	10
Crew Quarters	10
Engine Room	10
Exclusions	11
Exclusions	11
Disclaimer	11
PHOTOS	12
CONTACTS	18

Contact details	18
Telephones	18
Office hours	18
Address	18

SPECIFICATIONS

Basic Information

Category: Motor Yacht

Model Year: 2016

Year Built: 2016

Country: United States

Vessel Top: Electronic Sunroof

Dimensions

LOA: 55' 0" (16.76m)

Beam: 15' 5" (4.70m)

Max Draft: 3' 9" (1.14m)

Speed, Capacities and Weight

Cruise Speed: 30 Kts. (35 MPH)

Max Speed: 35 Kts. (40 MPH)

Gross Tonnage: 23 Pounds

Water Capacity: 156 Gallons

Holding Tank: 46 Gallons

Fuel Capacity: 423 Gallons

Accommodations

Total Cabins: 3

Total Berths: 3

Sleeps: 6

Total Heads: 2

Crew Cabin: 1

Crew Berths: 1

Crew Heads: 1

Hull and Deck Information

Hull Material: Fiberglass

Deck Material: Fiberglass

Hull Configuration: Deep Vee

Hull Color: Blue Steel

Hull Designer: Azimut

Exterior Designer: Azimut

Interior Designer: Azimut

Engine Information

Engines: 3

Manufacturer: Volvo Penta

Model: IPS 600

Engine Type: Inboard

Fuel Type: Diesel

DETAILED INFORMATION

Vessel Walkthrough

"FOCUS" is a 55S Azimut 2016 with a three stateroom, two head, plus crew quarters layout powered by triple Volvo pod drive 435 HP engines and a Kohler 18KW generator. This vessel is loaded with upgrades including the White Oak Interior, a bow thruster, SeaKeeper Gyro Stabilizer, and a Williams 285 Turbo Tender with a hauling and launching system. **"FOCUS"** is built for entertainment and comfort, which is apparent as you step aboard the teak swim platform and make your way to the cockpit, an area that has a BBQ with refrigeration underneath, an icemaker, and an electric awning. Stepping through the sliding glass door, you will enter the chic and modern salon and galley area with wooden flooring, a motorized hi-low TV system, and an electric sunroof with glass panels that will have your guests in awe. Making your way forward, the helm station to starboard is accompanied with a co-pilot seat and includes the Raymarine platinum package in addition to many other upgraded electronics making this 55S easy to captain for any owner. As you head down to the lower deck, you will enter the master stateroom located midship that includes a safe, private access to the master head, and a vanity table with two leather armchairs. The VIP stateroom is the perfect place where guests can relax after a day out on the water with a double berth, a full hanging closet, and also private access to the guest head. The starboard stateroom contains two single berths with wall lights on the headboard making it a great place to kick back at the end of the day. **"FOCUS"** is located in St. Petersburg, FL and is just a call away from your own private tour!

Highlights

- **White Oak Interior**
- **SeaKeeper Gyro Stabilizer**
- Triple Volvo IPS-600 at 435 Hp EA. (198 Hours EA on 5/1/2018)
- Kohler 18 KW Generator
- Bow Thruster
- Joystick Docking Control System
- 2015 Yachtique Williams 285 Turbo Tender
- Tender Hauling and Launching System
- Garage to Hold Williams Tender
- Teak Deck on Swim Platform, Garage, and Side Decks
- Painted Hull in Blue Steel
- Flagpole
- Custom LED Lighting for Exterior and Interior with Dimmers
- Sunbathing Cushions on Bow Seating
- Passerelle
- Electric Awning for Aft Cockpit
- Cockpit Table with Hi-Low System

- Cockpit BBQ with Refrigeration
- Icemaker on Cockpit
- (2) Floodlights
- Wooden Flooring in Main Deck
- Electric Sunroof with Glass Panels
- Electric Shade for Sunroof
- Miele Appliances in Galley
- Motorized Hi-Low TV System in Salon
- Venetian Blinds in Salon
- Salon/Dinette Conversion
- Co-Pilot Seat at Main Helm
- Raymarine Electronics Platinum Package
- Raymarine T270 Fixed Thermal Video Camera
- Skyhook Dynamic Positioning System w/ Joystick Controls
- Automatic Dynamic Trim Volvo Interceptor
- Washer/Dryer Combo Unit
- Safe in Master Stateroom
- Crew Cabin with A/C Unit
- Glendenning Cable Master System

Exterior

- Joystick Docking Control System: **UPGRADE**
- 2015 Yachtique Williams 285 Turbo Tender: **UPGRADE**
- Tender Hauling and Launching System: **UPGRADE**
- Garage to Hold Williams Tender: **UPGRADE**
- Teak Deck on Swim Platform, Garage, and Side Decks: **UPGRADE**
- Painted Hull in Blue Steel: **UPGRADE**
- Electric Sunroof with Glass Panels: **UPGRADE**
- Electric Shade for Sunroof: **UPGRADE**
- Flagpole: **UPGRADE**
- Custom LED Lighting for Exterior and Interior with Dimmers: **UPGRADE**
- Sunbathing Cushions on Bow Seating: **UPGRADE**
- Chain Washing System
- Chain Counter

Cockpit

- Passerelle: **UPGRADE**
- Electric Awning for Aft Cockpit: **UPGRADE**
- Cockpit Table with Hi-Low System: **UPGRADE**
- Cockpit BBQ with Refrigeration: **UPGRADE**

- Icemaker on Cockpit: **UPGRADE**
- (2) Floodlights: **UPGRADE**
- Teak Deck: **UPGRADE**
- Stainless Steele Sliding Glass Door
- Engine Room Access
- U-Shaped Seating with Sunbathing Cushions
- (2) Boarding Handrails
- External Shower
- Walkway Lights on Steps of Access Ladder
- Electric High Gloss Cherry Hi-Low Table
- Electric Mooring Winches

Salon/Dining/Galley

- White Oak Interior: **UPGRADE**
- Wooden Flooring: **UPGRADE**
- Electric Sunroof with Glass Panels: **UPGRADE**
- Electric Shade for Sunroof: **UPGRADE**
- Miele Microwave Oven: **UPGRADE**
- Motorized Hi-Low TV System: **UPGRADE**
- Venetian Blinds: **UPGRADE**
- Salon/Dinette Conversion: **UPGRADE**
- C-Shaped Sofa w/ Four Seats
- Fixed Table w/ Storage in Base
- Vitrifrigo Under Counter Refrigerator and Freezer
- Cabinet Storage in Aft Side of Galley

Helm / Electronics

- Co-Pilot Seat at Main Helm: **UPGRADE**
- Raymarine Electronics Platinum Package: **UPGRADE**
- Raymarine T270 Fixed Thermal Video Camera: **UPGRADE**
- Skyhook Dynamic Positioning System w/ Joystick Controls: **UPGRADE**
- Automatic Dynamic Trim Volvo Interceptor: **UPGRADE**
- Closure Curtain for Garage
- Double Racor Filters for Main Engines
- Bow Thruster Controls
- Engine Controls
- Horn Switch
- Navigation Lights
- Windshield Wipers
- Raymarine Easy Cruising System

- Fuel Indicators
- (2) 7" Volvo Display Screens
- (3) RPM Indicators

Lower Companionway

- Washer/Dryer Combo Unit

Master Stateroom

- Safe: **UPGRADE**
- Located Midship
- Double Berth w/ Headboard and Storage Below
- Shelf Behind Berth
- Vanity Table w/ Leather Armchairs
- LED Reading Lights
- (2) Openable Portholes
- Large Hanging Locker w/ Mirror
- Carpeted Flooring
- Walkway Lights

Master Head

- Private Access from Master Stateroom
- Separate Shower Enclosure
- Shower Column and Seat
- Full Vanity
- Openable Porthole w/ Venetian Blind
- Zebrano Wood Flooring
- Air Extractor
- TECMA Toilet

VIP Stateroom/ Bow

- Double Berth
- Private Access to Guest Head
- Full Hanging Closet
- Shelves on Sides of Berth
- (2) Wall Lights on Headboard
- Carpeted Flooring

- Venetian Blinds
- Spotlight Lighting

Starboard Stateroom

- (2) Single Berths
- (1) Central Nightstand Between Berths
- Hanging Wardrobe
- Lockers Underneath Berths
- (1) Openable Porthole
- Carpeted Flooring
- Spotlight Lighting
- Wall Lights on Headboard

Guest Head

- Direct Access to VIP Stateroom
- 3-Door Round Shower
- Full Vanity
- Shower Column
- Zebrano Wood Flooring
- Air Extractor
- TECMA Toilet

Crew Quarters

- Full A/C Unit: **UPGRADE**
- (1) Single Berth
- (1) Openable Porthole
- (2) Wardrobes
- Spotlight Lighting
- Crew Head w/ Vanity and TECMA Toilet

Engine Room

- Triple Volvo IPS-600 at 435 Hp EA. (198 Hours EA on 5/1/2018): **UPGRADE**
- Kohler 18 KW Generator: **UPGRADE**
- Bow Thruster: **UPGRADE**
- SeaKeeper Gyro Stabilizer: **UPGRADE**
- Glendenning Cable Master System: **UPGRADE**

- Access Via Cockpit Bench (Port)
- (1) Service Shore Power Socket
- 590L Fresh Water System
- 225L Black Water System
- 175L Grey Water System
- Seawater System
- Bilge System
- Service, Engines, and Generator Batteries
- Fuel System
- Head Ventilation

Exclusions

All owner's personal items

Exclusions

Owner's personal belongings.

Disclaimer

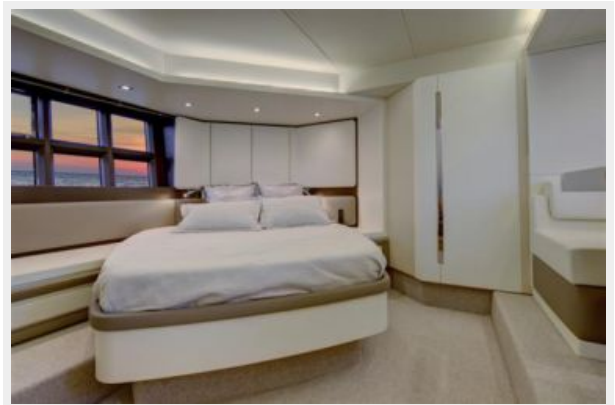
The Company offers the details of this vessel or yacht in good faith but cannot guarantee or warrant the accuracy of this information nor warrant the condition of the vessel. A buyer should instruct his representatives, agents, or his surveyors, to investigate such details as the buyer desires validated. This vessel or yacht is offered subject to prior sale, price change, or withdrawal without notice.

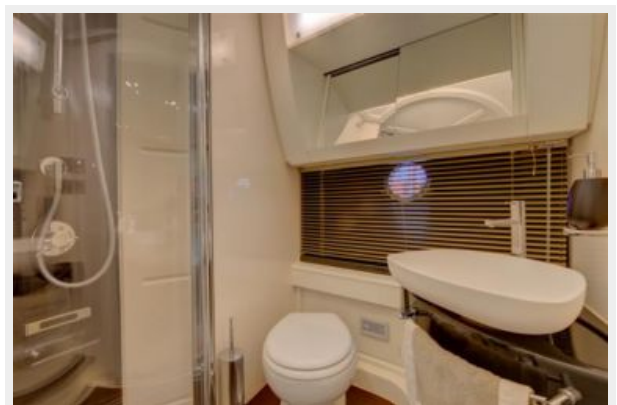
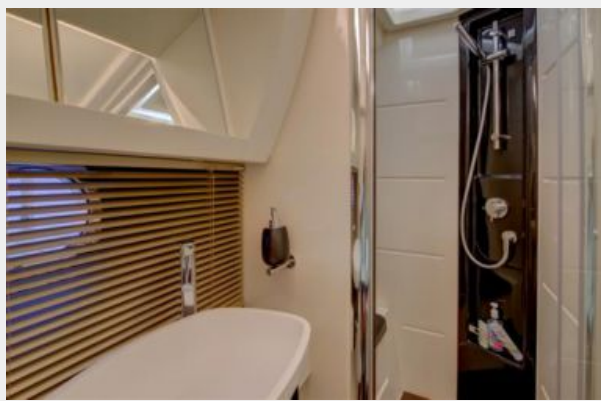
PHOTOS













CONTACTS

Andrey Shestakov, leading yacht broker of the sales department of Shestakov Yacht Sales Inc. Shestakov Yacht Sales Inc., the official representative of the Miami/Fort Lauderdale FL headquarters.

Contact details

Email: andrey@shestakovyachtsales.com

Web: shestakovyachtsales.com/en/

Telephones

USA: +1(954)274-4435

Office hours

Monday – Saturday: **9:00 - 21:00** EDT

Sunday: **closed**

Address



Harbour Towne Marina, 850 NE 3rd St,
STE 213, Dania, FL 33004