

LOLLYGAGGER — OCEAN ALEXANDER



Судостроитель: OCEAN ALEXANDER

Год постройки: 1994

Модель: Моторная яхта

Цена: **ЦЕНА ЯХТЫ ПО ЗАПРОСУ**

Местонахождение: United States

Длина общая: 42' 0" (12.80m)

Ширина: 14' 8" (4.47m)

Макс. осадка: 3' 10" (1.17m)

Крейс. скорость: 12 Kts. (14 MPH)

Макс. скорость: 15 Kts. (17 MPH)

Купить **Lollygagger — OCEAN ALEXANDER** а также выбрать подходящую вам яхту из нашего каталога яхт вам поможет опытный яхтенный брокер Андрей Шестаков. На сегодняшний день компания **Shestakov Yacht Sales Inc.** имеет большое количество яхт в собственном списке продаж, а также тесно сотрудничает со всеми крупными яхтенными производителями по всему миру.

Для того чтобы купить яхту **Lollygagger — OCEAN ALEXANDER** а также проконсультироваться по любому вопросу связанному с покупкой, продажей, чартером яхт позвоните по телефону **+7(918)465-66-44**.

ОГЛАВЛЕНИЕ

ОГЛАВЛЕНИЕ	2
ХАРАКТЕРИСТИКИ	3
Обзор	3
Основная информация	3
Размеры	3
Скорость, вместимость и масса	3
Размещение	3
Корпус и палуба	4
Информация о двигателе	4
ПОДРОБНОЕ ОПИСАНИЕ	5
Engine and Generator	5
Galley	5
Lower Helm Station	5
Flying Bridge	6
Main Salon	6
Accommodations	7
Deck Features	8
Исключения	8
Отказ от ответственности	8
ФОТОГРАФИИ	10
КОНТАКТЫ	26
Контактная информация	26
Телефоны	26
Время работы	26
Адрес	26

ХАРАКТЕРИСТИКИ

Обзор

Trawler Luxury, rebuilt twin Cat diesel engines (700 hrs since overhaul, receipts aboard), Bow Thruster, lower and upper helm stations with a hardtop over the bridge and a 4 sided enclosure. This Ocean Alexander 423 Classico is a "great loop veteran" and is fully equipped to do it again. Wonderful galley and salon, with a 2 stateroom, 2 head and shower layout, makes this a wonderful 2 couple cruiser. Minimal exterior teak for easy yearly maintenance. Fresh bottom paint and zincs, Garmin GPS Plotter and Radar, Autopilot, ETC. 8.5' Boss Boat dinghy with 9.9hp Yamaha 4 stroke motor and Electric Crane/Davit. "Lollygagger" is ready for your inspection.

Основная информация

Тип судна: Моторная яхта

Модельный год: 1994

Год постройки: 1994

Страна: United States

Размеры

Длина общая: 42' 0" (12.80m)

Ширина: 14' 8" (4.47m)

Макс. осадка: 3' 10" (1.17m)

Трапы: 14' 8" (4.47m)

Скорость, вместимость и масса

Крейс. скорость: 12 Kts. (14 MPH)

Макс. скорость: 15 Kts. (17 MPH)

Водоизмещение: 34200 Pounds

Вместимость воды: 80 Gallons

Вместимость сточного бака: 60 Gallons

Объем топливного бака: 600 Gallons

Размещение

Всего кают: 2

Всего коек: 3

Корпус и палуба

Материал корпуса: Fiberglass

Комплектация корпуса: Modified Deep Vee

Цвет корпуса: White

Информация о двигателе

Двигатели: 2

Производитель: Caterpillar

Модель: 3208N

Тип двигателя: Inboard

Тип топлива: Diesel

ПОДРОБНОЕ ОПИСАНИЕ

Engine and Generator

"Lollygagger" is powered by twin 3208 Caterpillar engines. These engines are naturally aspirated and produce 210 hp at WOT with direct drive Twin Disk MG-502 transmissions and Hynautic Controls. **Both engines were completely rebuilt in 07/14.** There are receipts on board for this, and for most of the other repair and maintenance items that have been completed. **There are currently 700 hrs on the engines since overhaul** (3800 total life hours). Ship power is provided by a Westerbeake 8kw diesel powered generator. This genset is in complete sound shield and has 2800 hrs of operating time. **Engine room access** is located by lifting the stairway in the Galley. The engine space is clean, tidy and well lit. There is a nice assortment of spare parts (belts/filters/fluids, etc) located here. Fuel tank switching and Racor Primary fuel filters are located aft. Access to everything, including the outboard side of both engines is easy.

- ProMariner 60 amp battery charger
- 20 gallon electric water heater
- (3) aluminum fuel tanks (one is 300 gallons, two are 150 gallons)

Galley

The galley is located at the front of the main salon, with excellent natural light and a wide open feel. Teak cabinetry, upper and lower storage cabinets, drawers and Excellent use of storage opportunities. The garbage and recycling is conveniently stored in a pull-out cabinet, and there is a huge bulk storage space beneath the teak parquet galley floor.

- Upper plate and glass storage
- (3) burner Princess Electric glasstop stove
- Norcold Freezer over Refrigerator
- GE Convection/Microwave oven
- Extra Deep storage sliders located in the cabinets beneath the sink
- Stainless steel sink with cutting board and drying rack (very clever)
- Combination faucet with sprayer
- Tiled counter and backsplash
- Tack lighting
- Pull-out cutting board
- Drawer space
- U-line Ice Maker located beneath helm seat

Lower Helm Station

Located at the forward stbd portion of the main salon is the Lower helm station. With port and

stbd side doors, access to both sides is quick and easy from the lower helm station. This station is completely capable of vessel command with total Electronics and controls.

- Upper gauge console with engine monitoring gauges
- Danforth Constellation compass with sunshade
- Icom M125 VHF Radio
- Bow Thruster control
- Simrad AP35 Autopilot
- Garmin GPSmap 4208 (Radar/GPS Plotter and Depth)
- Autohelm Tridata gauge
- ACR remote spotlight control pad
- Teak steering wheel
- Glendinning engine synchronizer
- Trim tab switches
- Hynautic engine controls
- Back up camera and viewing screen

Flying Bridge

With a full custom hardtop and 4 sided enclosure, the Flybridge is a great place to have morning coffee, evening cocktails and everything in between. The hardtop is a tremendous addition to the feel and comfort of this space. Located at the front of the bridge is the upper helm station:

- (2) pedestal mounted Capt Chairs with sunbrella covers
- Custom console cover
- Jensen AM/FM/CD/ Sat capable stereo
- Trim tabs controls
- Glendinning engine synchronizer
- Garmin GPSmap 4210 color display (HD Radar/ Chart Plotter/ Depth)
- Uniden VHF Radio with DSC
- Azimuth Electronic Compass
- ACR Remote spotlight control
- Simrad AP35 autopilot
- Autohelm tri-data repeater screen
- Anchor Windlass control
- L-shaped flybridge seating with storage beneath
- Rectangular shaped table

Main Salon

Rich teak woodwork with teak parquet flooring and excellent headroom. Large windows with wood blinds and fabric curtains. A large L-shaped sofa runs down the stbd side and across the back with storage beneath. A large teak table for dining and a leather barrel chair, reading lamps

and overhead lighting. As mentioned before, there are both Port and Stbd side doors that offer easy access to both side walks.

- Alpine salon stereo
- Vessel library with Owners manuals and service records, located in bookcase
- Magnavox Flat Panel HDTV
- DVD player
- (2) bar stools located at the breakfast counter
- HVAC controls for the salon and guest stateroom

Accommodations

The Guest Stateroom is forward and offers excellent storage, crossed upper and lower bunks, excellent headroom, overhead hatch and stainless steel portlights. This space also has it's own head with stand-up shower.

- Criss-crossed upper and lower bunks
- Storage drawers
- Hanging locker (closet)
- Overhead hatch with screen and shade
- (2) Stainless steel port lights with screens
- (2) reading lamps
- Overhead lighting
- Full length wardrobe mirror on back of door

Guest Head with Stand-up Shower

- Electric toilet
- Sink and counter space
- Medicine Cabinet
- Towel bars
- Stand-up Shower with bi-fold door
- Pocket door for privacy

The Master Stateroom is located aft of the main salon. Featuring a queen sized pedestal bed with Custom Inner-Spring mattress. This is a full beam stateroom with Stainless Steel side portlights and an overhead hatch. This space has it's own zone of reverse cycle Heating/Air Conditioning. Door and drawer storage cabinets run along the stbd side with two large hanging locker closets forward. There is a Beauty counter with sitting stool, mirror and make-up storage in the port rear corner. A full length wardrobe mirror is located on the back of the door.

- Pedestal mounted Queen Bed with storage beneath
- Custom inner-spring two sided mattress
- Spare Propellers stored under the bed
- (2) large Hanging lockers, one is complete full length

- Storage drawers along stbd side
- Built-in Beauty Counter with stool and mirror

Master Head and Shower

- Electric flushing toilet
- Sink and counter
- Medicine Cabinet
- Teak flooring
- Stand-up shower
- Bi-Fold shower door

Deck Features

- Transom mounted swim platform
- Folding swim ladder
- Safety rails and recessed walkaround
- Dockside water connection located aft
- Fresh water washdown located aft
- Lazarette Storage compartment is cavernous
- Magma stainless steel grill located on rear of trunk cabin
- Igloo cooler mounted on rear of trunk cabin
- Electric Crane/Davit with wired remote
- 2005 Boss Boat 8.5' rigid dinghy with full custom cover and cradle
- 2006 Yamaha 9.9hp 4 stroke outboard motor
- (2) 30 amp shore power connections
- Anchor Pulpit with Stainless steel chute
- Windlass with footpedal controls
- Raw water washdown at anchor pulpit
- Radar Mast with spreader light and back-up camera for docking

Исключения

При продаже яхты исключаются личные вещи владельца.

Отказ от ответственности

Компания предоставляет описание судна или яхты добросовестно, но не может гарантировать точность этой информации, а также не ручается за техническое состояние. Покупатель должен проинструктировать своих агентов или оценщиков исследовать представленную информацию более подробно, по собственному желанию. Продажа судна или яхты, изменение цены или снятие с продажи будет происходить без

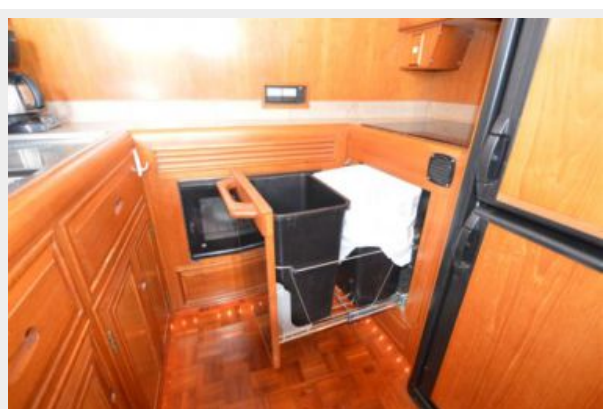
предварительного уведомления.

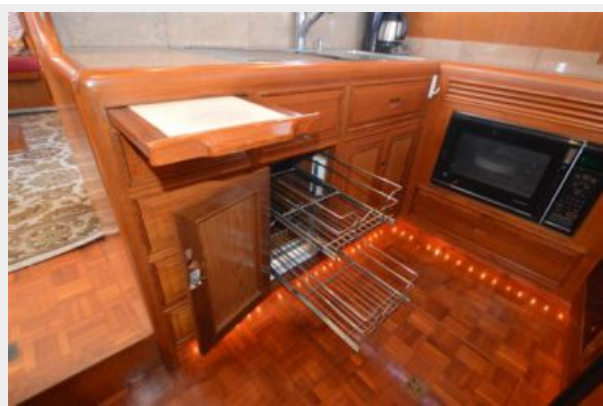
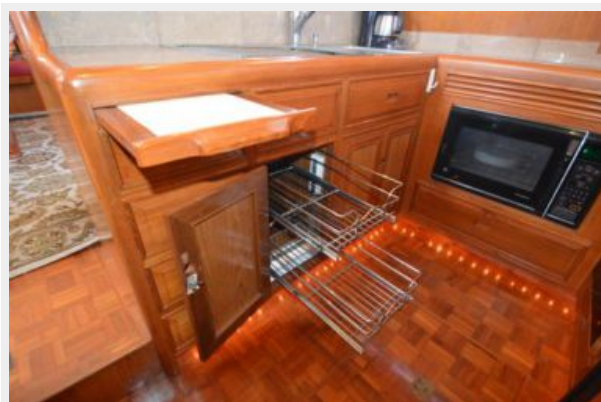
ФОТОГРАФИИ











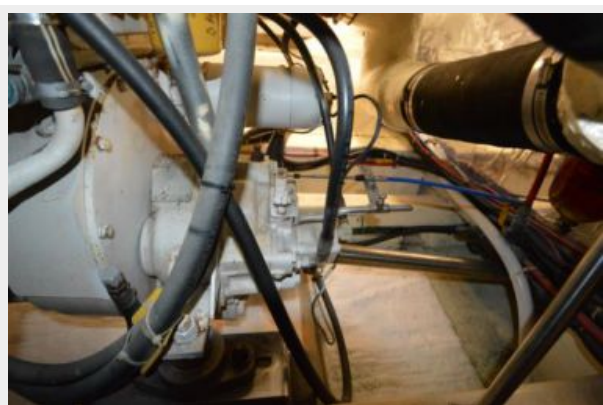




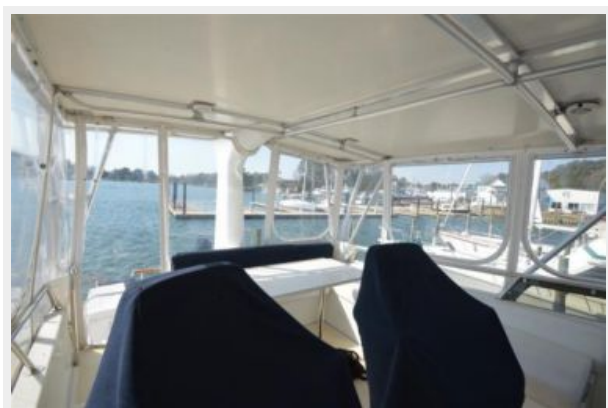






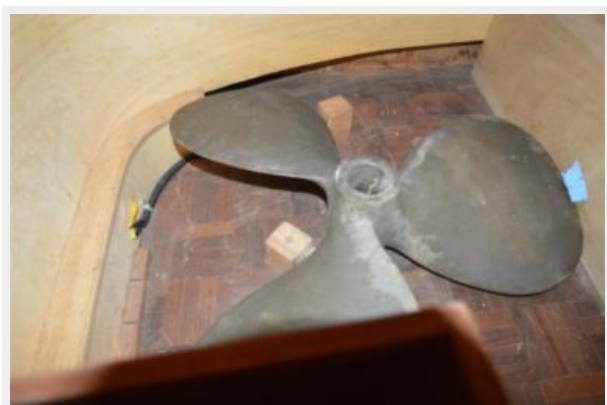












КОНТАКТЫ

Андрей Шестаков (Andrey Shestakov) – ведущий яхтенный брокер отдела продаж яхт и судов компании Shestakov Yacht Sales Inc. Официальный представитель Shestakov Yacht Sales Inc. для русскоговорящих клиентов в центральном офисе компании в Майами/Форт Лодердейл/Флорида/США.

Контактная информация

Email: andrey@shestakovyachtsales.com

Web: shestakovyachtsales.com

Телефоны

Краснодарский край: **+7(918)465-66-44**

США, Майами, Флорида: **+1(954)274-4435**

Время работы

Понедельник – Суббота: **9:00 - 21:00**
EDT

Воскресенье: **Закрето**

Адрес



Harbour Towne Marina, 850 NE 3rd St,
STE 213, Dania, FL 33004